



GRETCHEN WHITMER
GOVERNOR

STATE OF MICHIGAN
DEPARTMENT OF LICENSING AND REGULATORY AFFAIRS
PUBLIC SERVICE COMMISSION

SALLY A. TALBERG
CHAIRMAN

NORMAN J. SAARI
COMMISSIONER

ORLENE HAWKS
DIRECTOR

Received & Inspected
MAR 4 - 2019

FCC Mailroom

February 21, 2019

DOCKET FILE COPY ORIGINAL

Marlene H. Dortch
Office of the Secretary
Federal Communications Commission
445 12th Street, SW
Washington, DC 20554

Mr. Victor Gaither
Vice President, High Cost and Low Income Div.
Universal Service Administration Company
700 12th St. NW, Suite 900
Washington, DC 20005

**Re: Midwest Energy Cooperative d/b/a Midwest Energy & Communications
Expansion and Certification of Wire Centers and Census Blocks for Universal
Service Support, Pursuant to Section 214(e)(2) of the Federal Communications Act
of 1996, Federal Communications Commission CC Docket No. 96-45, CC Docket
No. 09-197, WC Docket No. 10-90**

Dear Ms. Dortch and Mr. Gaither:

On September 25, 2018 and December 14, 2018, Midwest Energy Cooperative d/b/a Midwest Energy & Communications (Midwest - SAC 316131) filed an application and an amended application to expand their ETC status to include all census blocks and exchanges listed in amended Exhibit 1 of the application.

On February 21, 2019, the Michigan Public Service Commission (MPSC) issued an order in Case No. U-17861 approving Midwest's request for ETC expansion. The MPSC order, as well as Exhibit 1 of the application, is attached.

Sincerely,

Robin P. Ancona, Director
Telecommunications Division

Attachments

- Midwest ETC Order (U-17861)
- Service Area – Exhibit 1

Cc: Jessica Zufolo, USAC

No. of Copies rec'd 0
List ABCDE

LARA is an equal opportunity employer/program.

Auxiliary aids, services and other reasonable accommodations are available upon request to individuals with disabilities.
7109 W. SAGINAW HIGHWAY • P.O. BOX 30221 • LANSING, MICHIGAN 48909 • www.michigan.gov/mpsc • 517-284-8100

STATE OF MICHIGAN
BEFORE THE MICHIGAN PUBLIC SERVICE COMMISSION

Received & Inspected

MAR 4 - 2019

* * * * *

FCC Mailroom

In the matter of the application of)
MIDWEST ENERGY COOPERATIVE, d/b/a)
MIDWEST CONNECTIONS,)
for designation as an eligible telecommunications)
carrier in the state of Michigan.)
_____)

Case No. U-17861

At the February 21, 2019 meeting of the Michigan Public Service Commission in Lansing,
Michigan.

PRESENT: Hon. Sally A. Talberg, Chairman
Hon. Norman J. Saari, Commissioner

ORDER

On March 19, 2015, Midwest Energy Cooperative, d/b/a Midwest Connections (Midwest) filed an application pursuant to Section 214(e)(2) of the federal Communications Act of 1934, 47 USC 214(e)(2), for designation as an eligible telecommunications carrier (ETC) for access to universal service fund (USF) support for the purpose of participating in Rural Broadband funding opportunities and providing service to High-Cost areas only. On June 3, 2015, the Commission issued an order approving Midwest's application as a High-Cost ETC and noted that Midwest would not be seeking reimbursement for Lifeline customers served. Midwest was designated by the Commission as an ETC throughout the 31 census blocks that were awarded by the Federal Communications Commission (FCC) as a result of the Rural Broadband Experiment program.

On August 28, 2018, the FCC announced the winning bidders of the Connect America Fund Phase II Auction (CAF II). Midwest was among the winners of the auction that were awarded

additional census blocks in the state of Michigan. The auction winners are required to use money awarded in the auction to expand broadband and meet various broadband goals throughout the census blocks. Additionally, the auction money award is contingent upon Midwest's designation as an ETC in the census blocks it received as a result of the auction.

On September 25, 2018, Midwest¹ filed an application pursuant to Section 214(e)(2) of the Telecommunications Act of 1996, 47 USC 214(e)(2), requesting approval to expand its current ETC designation to now include Lifeline service, and to expand its designated service area to include Midwest's entire service area. On December 14, 2018, Midwest filed an amended application (December 14 application), and on January 3, 2019, Midwest filed an amended Exhibit 1. Midwest seeks to include all census blocks it was awarded in the FCC's CAF II Auction. In Midwest's December 14 application, the company requested that the Commission approve the proposed service area as shown in Exhibit 1 to supplement its prior designated area for the purpose of receiving federal and state low-income universal service support for providing Lifeline services. The January 3, 2019 Exhibit 1 contains Midwest's entire service area listed by exchange in addition to a complete list of awarded census blocks from the Rural Broadband Experiment program and the recent CAF II Auction. Midwest is not seeking ETC designation in any census block that includes Tribal land.

Midwest is currently a licensed provider of basic local exchange service in the state of Michigan and operates as an ETC under Study Area Code 316131. As stated in its December 14 application, Midwest transitioned to Alianza as its Voice-over-Internet Protocol (VoIP) partner. Alianza provides a cloud-based VoIP service. Considering these changes, Midwest has confirmed

¹ After the June 3, 2015 order issued Midwest changed its assumed name, and the current applications are filed in the name of Midwest Energy Cooperative, d/b/a Midwest Energy & Communications.

that it is still considered a facilities-based provider and it owns the physical fiber network used to provide telecommunications and information services to its members.

Midwest certifies that it will use any federal High-Cost support it receives only for the provision, construction, maintenance and upgrading of facilities and provision of supported services in the service area and in the manner for which it was intended. Midwest has committed to meet all federal broadband deployment obligations and is also providing a broadband speed that currently exceeds the FCC's minimum broadband speed requirements. Midwest also states that it offers a telephone package pursuant to Lifeline obligations.

In the February 21, 2019 order in Case No. U-20337, the Commission granted Midwest a permanent license to provide basic local exchange service in the expanded geographic area encompassed by the request in the instant case. After reviewing Midwest's application and amended filings, the Commission finds that expanding Midwest's ETC service area and expanding the ETC designation to include Lifeline service promote the availability of universal service and are in the public interest. *See*, 47 USC 214(e)(2). The Commission finds that the December 14 application demonstrates that Midwest meets the requirements for designation as an ETC in the expanded service area and for purposes of offering Lifeline service. The Commission reminds Midwest that all other aspects of the June 3, 2015 order, including the conditions therein, remain in effect, and that Midwest shall continue to meet all ETC and CAF II requirements.

THEREFORE, IT IS ORDERED that the December 14, 2018 application filed by Midwest Energy Cooperative, d/b/a Midwest Energy & Communications, to expand its eligible telecommunications carrier designation from High-Cost to High-Cost and Lifeline and to include all exchanges and census blocks listed in the January 3, 2019 version of Exhibit 1 is granted.

The Commission reserves jurisdiction and may issue further orders as necessary.

Any party aggrieved by this order may file an action in the appropriate federal District Court pursuant to 28 USC 1331. To comply with the Michigan Rules of Court's requirement to notify the Commission of an appeal, appellants shall send required notices to both the Commission's Executive Secretary and to the Commission's Legal Counsel. Electronic notifications should be sent to the Executive Secretary at mpscdockets@michigan.gov and to the Michigan Department of the Attorney General - Public Service Division at pungpl@michigan.gov. In lieu of electronic submissions, paper copies of such notifications may be sent to the Executive Secretary and the Attorney General - Public Service Division at 7109 W. Saginaw Hwy., Lansing, MI 48917.

MICHIGAN PUBLIC SERVICE COMMISSION



Sally A. Talberg, Chairman



Norman J. Saari, Commissioner

By its action of February 21, 2019.



Kavita Kale, Executive Secretary

PROOF OF SERVICE

STATE OF MICHIGAN)

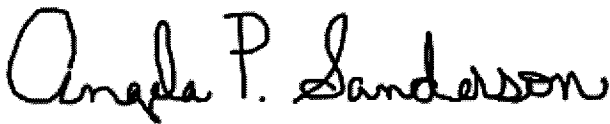
Case No. U-17861

County of Ingham)

Brianna Brown being duly sworn, deposes and says that on February 21, 2019 A.D. she electronically notified the attached list of this **Commission Order via e-mail transmission**, to the persons as shown on the attached service list (Listserv Distribution List).


Brianna Brown

Subscribed and sworn to before me
this 21st day of February 2019.

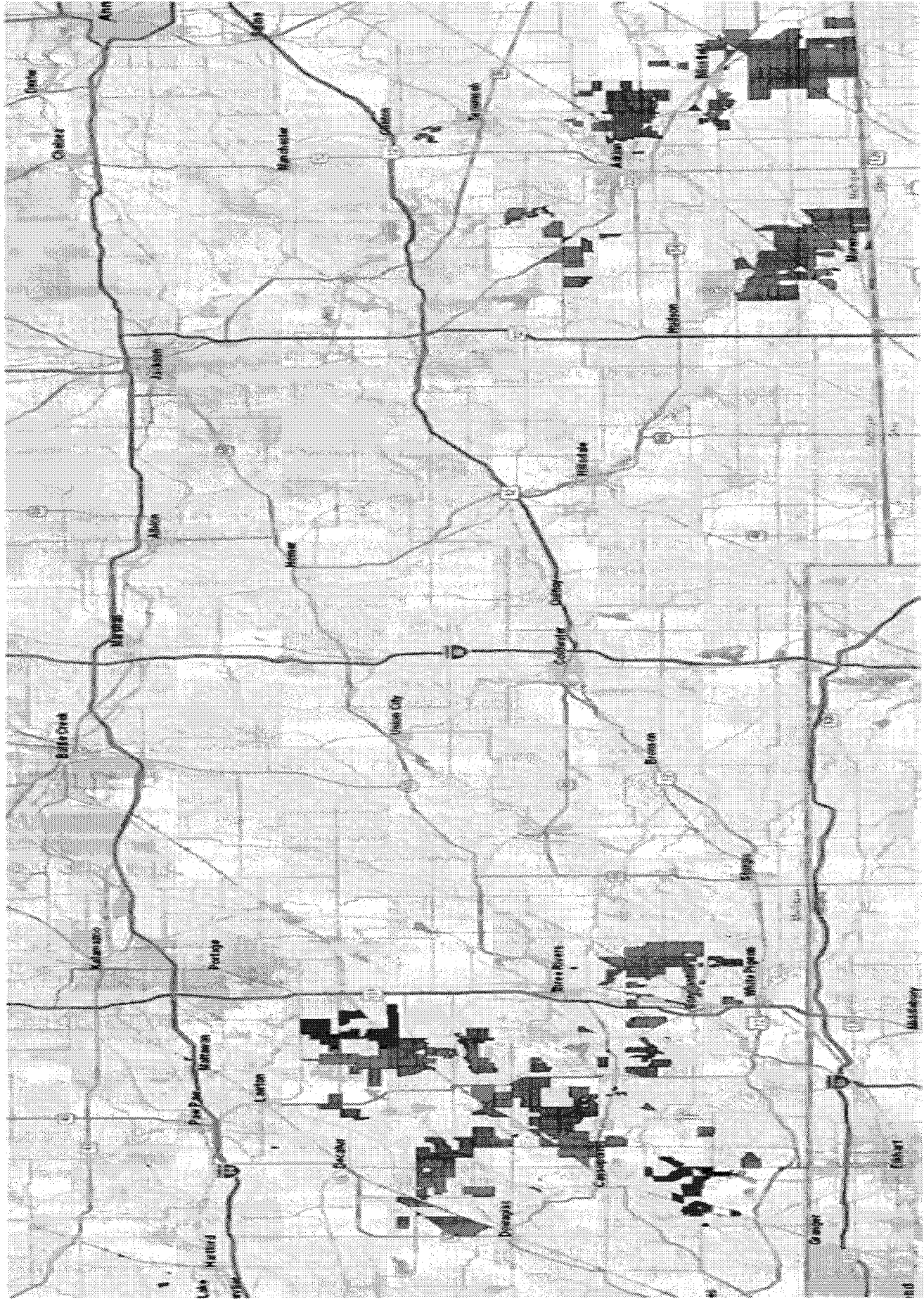


Angela P. Sanderson
Notary Public, Shiawassee County, Michigan
As acting in Eaton County
My Commission Expires: May 21, 2024

Service List for Case: U-17861

Name	Email Address
Midwest Energy Cooperative Shannon M. Heim	dave.allen@teammidwest.com shannon.heim@lawmoss.com

Exhibit 1: Page 1







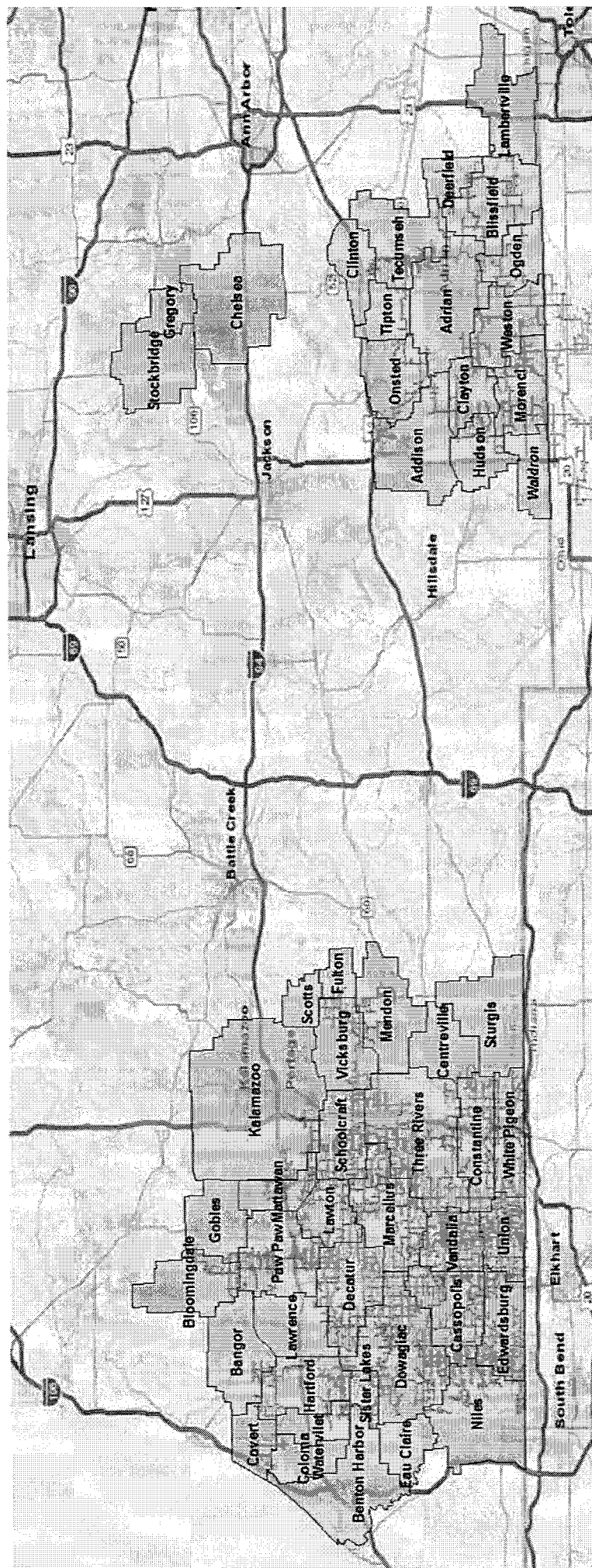




Exhibit 1: ILECs Serving Midwest's Proposed ILEC Territory

CLLI Code	Exchange	ILEC
CSPLMIXGDS0	Cassopolis	Frontier North Inc.
CSPLMIXGDS0	White Pigeon	Frontier North Inc.
THRRMIXTDS0	Three Rivers	Frontier North Inc.
CNSTMIXGRS0	Constantine	Frontier North Inc.
LWTNMIXGDS0	Lawton	Frontier North Inc.
PWPWMIXGDS0	Paw Paw	Frontier North Inc.
DCTRMIXGDS0	Decatur	Frontier North Inc.
DWGCMIXGDS0	Dowagiac	Frontier North Inc.
GDRPMIBLXMX	Niles	AT&T Michigan
EDWRMIXGDS1	Edwardsburg	Frontier North Inc.
UNINMIXGDS0	Union	Frontier North Inc.
VANDMIXGDS0	Vandalia	Frontier North Inc.
EUCLMIECRSA	Eau Claire	AT&T Michigan
MRCLMIXGRS0	Marcellus	Frontier North Inc.
SCHLMIXGRS0	Schoolcraft	Frontier North Inc.
VCBGMIMNDS0	Vicksburg	AT&T Michigan
FLTNMIMNRSA	Fulton	AT&T Michigan
GDRPMIBLXMX	Kalamazoo	AT&T Michigan
MTWNMIXGDS0	Mattawan	Frontier North Inc.
SCVLMIMNDS0	Scotts	AT&T Michigan
GBLSMIXGDS0	Gobles	Frontier North Inc.
BLDLMIXIDS1	Bloomington	Bloomington Telephone Company
CVRTMIXGRS0	Covert	Frontier North Inc.
WTRVMIWVRSA	Coloma	AT&T Michigan
WTRVMIWVRSA	Watervliet	AT&T Michigan
HRFRMIXGDS0	Hartford	Frontier North Inc.
LWRNMIXIDS0	Lawrence	Frontier Midstates Inc.
STRGMIXGDS0	Sturgis	Frontier North Inc.

CLLI Code	Exchange	ILEC
CNVIMIXHRS0	Centreville	Frontier North Inc.
BNGRMIXGDS0	Bangor	Frontier North Inc.
MNDNMIXGRS0	Mendon	Frontier North Inc.
GDRPMIBLXM	Benton Harbor	AT&T Michigan
ADRNMIXGDS0	Adrian	Frontier North Inc.
TCMSMIXGDS0	Tecumseh	Frontier North Inc.
BLFDMIXGRS0	Blissfield	Frontier North Inc.
PTBGMIAKDS0	Deerfield	Deerfield Farmers Telephone Company
LMVLMIXIDS0	Lambertville	Frontier Midstates Inc.
OGDCMIXIDS0	Ogden	Ogden Telephone Company
WDRNMIXJDS1	Waldron	Waldron Telephone Company
SNCKMIXIDS0	Weston	Sand Creek Telephone Company
MRNCMIXIDS0	Morenci	Frontier Midstates Inc.
CYTNMIXIDS0	Clayton	Communications Corporation of Michigan (TDS)
HDSNMIXHDS3	Hudson	Frontier North Inc.
ONSTMIXIDS0	Onsted	Frontier Communications of Michigan, Inc.
ADSNMIXIDS0	Addison	Frontier Midstates Inc.
TPTNMIXGRS0	Tipton	Frontier North Inc.
STBRMIXIDS0	Stockbridge	Frontier Midstates Inc.
GRGRMIXIDS0	Gregory	Frontier Midstates Inc.
CHLSMIMNDS0	Chelsea	AT&T Michigan
CLTNMIXGRS0	Clinton	Frontier North Inc.
SRLKMIXGRS0	Sister Lakes	Frontier North Inc.

FRN	Winner	State	Census Block ID
0023076508	Midwest Energy Cooperative, Inc.	Michigan	260270016003043
0023076508	Midwest Energy Cooperative, Inc.	Michigan	260770030021071
0023076508	Midwest Energy Cooperative, Inc.	Michigan	260270018002017
0023076508	Midwest Energy Cooperative, Inc.	Michigan	260770030021043
0023076508	Midwest Energy Cooperative, Inc.	Michigan	260270021005035
0023076508	Midwest Energy Cooperative, Inc.	Michigan	260770030021012
0023076508	Midwest Energy Cooperative, Inc.	Michigan	260770030021039
0023076508	Midwest Energy Cooperative, Inc.	Michigan	260770030021029
0023076508	Midwest Energy Cooperative, Inc.	Michigan	260270021005049
0023076508	Midwest Energy Cooperative, Inc.	Michigan	260270018002024
0023076508	Midwest Energy Cooperative, Inc.	Michigan	260770030021057
0023076508	Midwest Energy Cooperative, Inc.	Michigan	260770030021085
0023076508	Midwest Energy Cooperative, Inc.	Michigan	260270018002000
0023076508	Midwest Energy Cooperative, Inc.	Michigan	260270018002016
0023076508	Midwest Energy Cooperative, Inc.	Michigan	260770030021015
0023076508	Midwest Energy Cooperative, Inc.	Michigan	260270016003027
0023076508	Midwest Energy Cooperative, Inc.	Michigan	260770030021060
0023076508	Midwest Energy Cooperative, Inc.	Michigan	260270018002018
0023076508	Midwest Energy Cooperative, Inc.	Michigan	260270016003012
0023076508	Midwest Energy Cooperative, Inc.	Michigan	260270018005002
0023076508	Midwest Energy Cooperative, Inc.	Michigan	260770030021025
0023076508	Midwest Energy Cooperative, Inc.	Michigan	260270016003021
0023076508	Midwest Energy Cooperative, Inc.	Michigan	260770030021038
0023076508	Midwest Energy Cooperative, Inc.	Michigan	260270021005044
0023076508	Midwest Energy Cooperative, Inc.	Michigan	260770030021070
0023076508	Midwest Energy Cooperative, Inc.	Michigan	260770030021080
0023076508	Midwest Energy Cooperative, Inc.	Michigan	260270018002015
0023076508	Midwest Energy Cooperative, Inc.	Michigan	260770030021069
0023076508	Midwest Energy Cooperative, Inc.	Michigan	260270016003006
0023076508	Midwest Energy Cooperative, Inc.	Michigan	260270021005054
			260270021005041

FRN	Winner	State	County	Census Block ID
0023076508	Midwest Energy Cooperative, Inc.	Michigan	Cass	260270010001002
0023076508	Midwest Energy Cooperative, Inc.	Michigan	Cass	260270010001005
0023076508	Midwest Energy Cooperative, Inc.	Michigan	Cass	260270010001029
0023076508	Midwest Energy Cooperative, Inc.	Michigan	Cass	260270010001038
0023076508	Midwest Energy Cooperative, Inc.	Michigan	Cass	260270010001040
0023076508	Midwest Energy Cooperative, Inc.	Michigan	Cass	260270010001047
0023076508	Midwest Energy Cooperative, Inc.	Michigan	Cass	260270010001057
0023076508	Midwest Energy Cooperative, Inc.	Michigan	Cass	260270011002007
0023076508	Midwest Energy Cooperative, Inc.	Michigan	Cass	260270011002009
0023076508	Midwest Energy Cooperative, Inc.	Michigan	Cass	260270011002040
0023076508	Midwest Energy Cooperative, Inc.	Michigan	Cass	260270016001012
0023076508	Midwest Energy Cooperative, Inc.	Michigan	Cass	260270016001019
0023076508	Midwest Energy Cooperative, Inc.	Michigan	Cass	260270016001022
0023076508	Midwest Energy Cooperative, Inc.	Michigan	Cass	260270016001028
0023076508	Midwest Energy Cooperative, Inc.	Michigan	Cass	260270016001031
0023076508	Midwest Energy Cooperative, Inc.	Michigan	Cass	260270016001032
0023076508	Midwest Energy Cooperative, Inc.	Michigan	Cass	260270016001033
0023076508	Midwest Energy Cooperative, Inc.	Michigan	Cass	260270016001036
0023076508	Midwest Energy Cooperative, Inc.	Michigan	Cass	260270016001037
0023076508	Midwest Energy Cooperative, Inc.	Michigan	Cass	260270016001038
0023076508	Midwest Energy Cooperative, Inc.	Michigan	Cass	260270016001039
0023076508	Midwest Energy Cooperative, Inc.	Michigan	Cass	260270016001040
0023076508	Midwest Energy Cooperative, Inc.	Michigan	Cass	260270016001041
0023076508	Midwest Energy Cooperative, Inc.	Michigan	Cass	260270016001067
0023076508	Midwest Energy Cooperative, Inc.	Michigan	Cass	260270016001068
0023076508	Midwest Energy Cooperative, Inc.	Michigan	Cass	260270016001069
0023076508	Midwest Energy Cooperative, Inc.	Michigan	Cass	260270016002013
0023076508	Midwest Energy Cooperative, Inc.	Michigan	Cass	260270016002014
0023076508	Midwest Energy Cooperative, Inc.	Michigan	Cass	260270016002015
0023076508	Midwest Energy Cooperative, Inc.	Michigan	Cass	260270016002017
0023076508	Midwest Energy Cooperative, Inc.	Michigan	Cass	260270016002018
0023076508	Midwest Energy Cooperative, Inc.	Michigan	Cass	260270016002025
0023076508	Midwest Energy Cooperative, Inc.	Michigan	Cass	260270016002027
0023076508	Midwest Energy Cooperative, Inc.	Michigan	Cass	260270016003002
0023076508	Midwest Energy Cooperative, Inc.	Michigan	Cass	260270016003034
0023076508	Midwest Energy Cooperative, Inc.	Michigan	Cass	260270016003038
0023076508	Midwest Energy Cooperative, Inc.	Michigan	Cass	260270016004045
0023076508	Midwest Energy Cooperative, Inc.	Michigan	Cass	260270017001001
0023076508	Midwest Energy Cooperative, Inc.	Michigan	Cass	260270017001002
0023076508	Midwest Energy Cooperative, Inc.	Michigan	Cass	260270017001014
0023076508	Midwest Energy Cooperative, Inc.	Michigan	Cass	260270017001015
0023076508	Midwest Energy Cooperative, Inc.	Michigan	Cass	260270017001016
0023076508	Midwest Energy Cooperative, Inc.	Michigan	Cass	260270017001017
0023076508	Midwest Energy Cooperative, Inc.	Michigan	Cass	260270017001023
0023076508	Midwest Energy Cooperative, Inc.	Michigan	Cass	260270017001041

[illegible]

Exhibit 1: Page 12

[illegible]

[illegible]

[illegible]

[illegible]

[illegible]

[illegible]

0023076508	Midwest Energy Cooperative, Inc.	Michigan	St. Joseph	261490412003011
0023076508	Midwest Energy Cooperative, Inc.	Michigan	St. Joseph	261490412003012
0023076508	Midwest Energy Cooperative, Inc.	Michigan	St. Joseph	261490412003013
0023076508	Midwest Energy Cooperative, Inc.	Michigan	St. Joseph	261490412003014
0023076508	Midwest Energy Cooperative, Inc.	Michigan	St. Joseph	261490412003019
0023076508	Midwest Energy Cooperative, Inc.	Michigan	St. Joseph	261490412003031
0023076508	Midwest Energy Cooperative, Inc.	Michigan	St. Joseph	261490412003036
0023076508	Midwest Energy Cooperative, Inc.	Michigan	St. Joseph	261490412003041
0023076508	Midwest Energy Cooperative, Inc.	Michigan	St. Joseph	261490412003059
0023076508	Midwest Energy Cooperative, Inc.	Michigan	St. Joseph	261490412003062
0023076508	Midwest Energy Cooperative, Inc.	Michigan	St. Joseph	261490412003067
0023076508	Midwest Energy Cooperative, Inc.	Michigan	St. Joseph	261490412003075
0023076508	Midwest Energy Cooperative, Inc.	Michigan	Van Buren	261590109002009
0023076508	Midwest Energy Cooperative, Inc.	Michigan	Van Buren	261590114001075
0023076508	Midwest Energy Cooperative, Inc.	Michigan	Van Buren	261590116003019
0023076508	Midwest Energy Cooperative, Inc.	Michigan	Van Buren	261590116005007
0023076508	Midwest Energy Cooperative, Inc.	Michigan	Van Buren	261590116005015
0023076508	Midwest Energy Cooperative, Inc.	Michigan	Van Buren	261590116005021
0023076508	Midwest Energy Cooperative, Inc.	Michigan	Van Buren	261590116005032
0023076508	Midwest Energy Cooperative, Inc.	Michigan	Van Buren	261590116005033
0023076508	Midwest Energy Cooperative, Inc.	Michigan	Van Buren	261590116005034
0023076508	Midwest Energy Cooperative, Inc.	Michigan	Van Buren	261590116005043
0023076508	Midwest Energy Cooperative, Inc.	Michigan	Van Buren	261590116005044
0023076508	Midwest Energy Cooperative, Inc.	Michigan	Van Buren	261590116005045
0023076508	Midwest Energy Cooperative, Inc.	Michigan	Van Buren	261590116005046
0023076508	Midwest Energy Cooperative, Inc.	Michigan	Van Buren	261590116005060
0023076508	Midwest Energy Cooperative, Inc.	Michigan	Van Buren	261590116006015
0023076508	Midwest Energy Cooperative, Inc.	Michigan	Van Buren	261590116006016
0023076508	Midwest Energy Cooperative, Inc.	Michigan	Van Buren	261590118003066
0023076508	Midwest Energy Cooperative, Inc.	Michigan	Van Buren	261590120004008
0023076508	Midwest Energy Cooperative, Inc.	Michigan	Van Buren	261590120004052