

Appendix

ILLUSTRATION A:

The example below is from USAC’s Entity Download Tool¹ the Parent in this example PINE BLUFF SCHOOL DISTRICT BEN: 139360. The Child Entities for PINE BLUFF SCHOOL DISTRICT are listed in the first Column “Entity Name” and their Physical Addresses are listed in each row.

Entity Name	Entity #	Entity Type	Parent Entity Name	Parent Entity #	Parent Entity Type	Physical Address	Physical City	Physical County	Physical State	Zip
BROADMOOR ELEMENTARY SCHOOL	81983	School	PINE BLUFF SCHOOL DISTRICT	139360	School District	1106 WISCONSIN	PINE BLUFF	JEFFERSON	AR	71601
PINE BLUFF HIGH SCHOOL	81990	School	PINE BLUFF SCHOOL DISTRICT	139360	School District	711 W 11TH AVE	PINE BLUFF	JEFFERSON	AR	71601
34TH AVE ELEM SCHOOL	81994	School	PINE BLUFF SCHOOL DISTRICT	139360	School District	801 E 34TH AVE	PINE BLUFF	JEFFERSON	AR	71601
BELAIR MIDDLE SCHOOL	81995	School	PINE BLUFF SCHOOL DISTRICT	139360	School District	1301 COMMERCE RD	PINE BLUFF	JEFFERSON	AR	71601
JACK ROBEY JUNIOR HIGH SCHOOL	82012	School	PINE BLUFF SCHOOL DISTRICT	139360	School District	4101 S OLIVE ST	PINE BLUFF	JEFFERSON	AR	71603
SOUTHWOOD ELEMENTARY SCHOOL	82013	School	PINE BLUFF SCHOOL DISTRICT	139360	School District	4200 FIR ST	PINE BLUFF	JEFFERSON	AR	71603
W. T. CHENEY ELEMENTARY SCHOOL	82014	School	PINE BLUFF SCHOOL DISTRICT	139360	School District	2206 RIDGWAY RD	PINE BLUFF	JEFFERSON	AR	71603
FIRST WARD LEARNING CENTER	16073868	Non-Instructional Facility (INF)	PINE BLUFF SCHOOL DISTRICT	139360	School District	1300 EAST 5TH STREET	PINE BLUFF	JEFFERSON	AR	71601
PINE BLUFF DIST ADMIN ANNEX	16060785	Non-Instructional Facility (INF)	PINE BLUFF SCHOOL DISTRICT	139360	School District	512 S PINE	PINE BLUFF	JEFFERSON	AR	71601
PBSD WAREHOUSE	16073865	Non-Instructional Facility (INF)	PINE BLUFF SCHOOL DISTRICT	139360	School District	105 SOUTH WALNUT	PINE BLUFF	JEFFERSON	AR	71601
PBSD PARENT CENTER	16073866	Non-Instructional Facility (INF)	PINE BLUFF SCHOOL DISTRICT	139360	School District	1215 WEST PULLEN STREET	PINE BLUFF	JEFFERSON	AR	71601
PBSD MAINTENANCE/TRANSPORTATION	16073867	Non-Instructional Facility (INF)	PINE BLUFF SCHOOL DISTRICT	139360	School District	300 NORTH LINDEM STREET	PINE BLUFF	JEFFERSON	AR	71601

ILLUSTRATION B:

Mock Example: 470 Detail Report Output example with “Location” tab added for illustrative purposes.

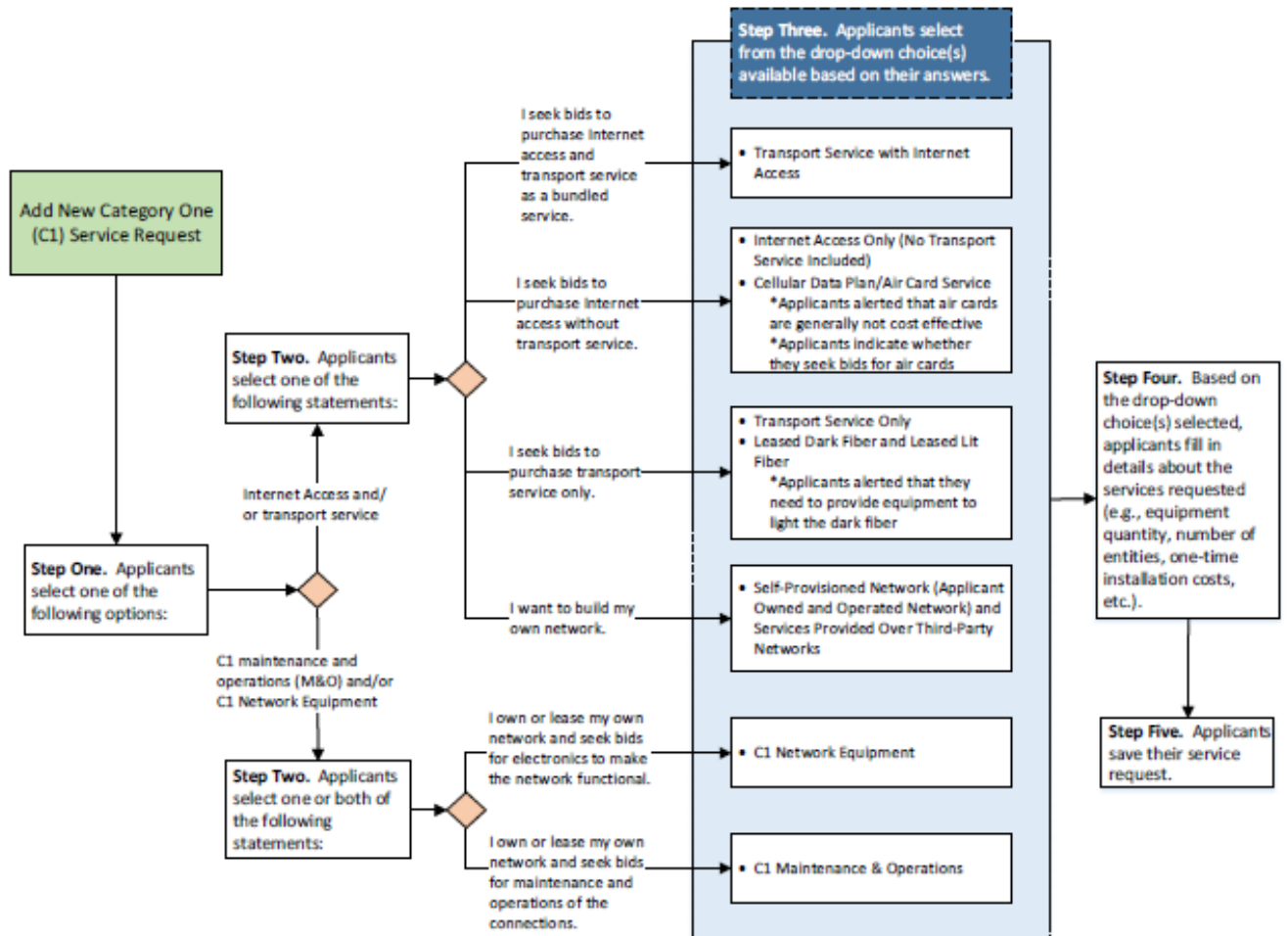
[illegible]

¹ <https://data.usac.org/publicreports/entitydownload/entity/download>

Appendix

ILLUSTRATION C:

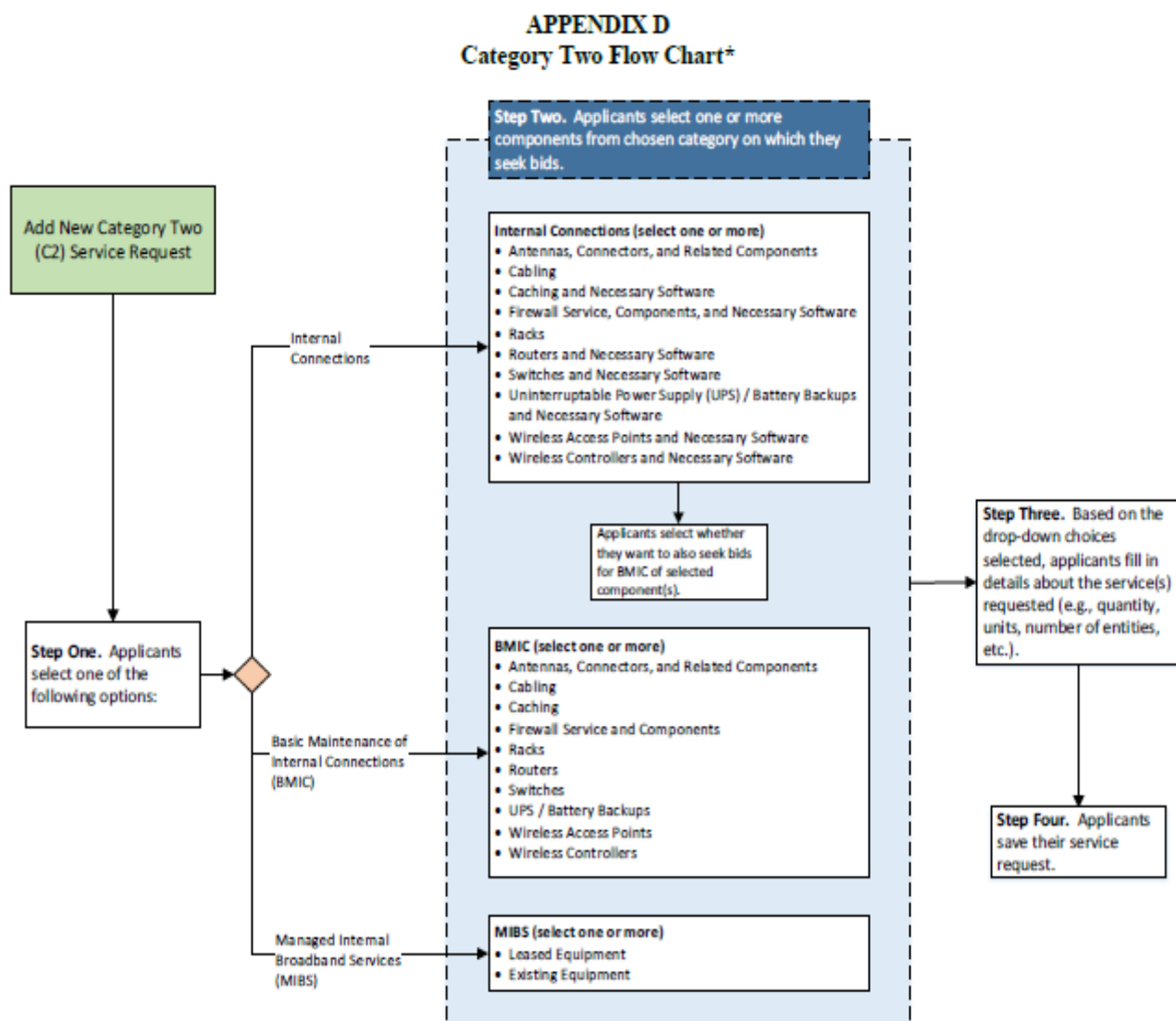
APPENDIX C Category One Flow Chart*



* Before reaching the service request stage of the FCC Form 470, applicants generally provide contact information, indicate their applicant type (e.g., library, school district, etc.), provide the number of eligible entities served, and list the sites where they plan to receive service.

Appendix

ILLUSTRATION D:



* Before reaching the service request stage of the FCC Form 470, applicants generally provide contact information, indicate their applicant type (e.g., library, school district, etc.), provide the number of eligible entities served, and list the sites where they plan to receive service.

Appendix

ILLUSTRATION E:

EXAMPLE OF 470'S

Example of no RFP or location information in Narrative.

Form 470: 200001575

Billed Entity Information

Billed Entity		Contact Information	
Applicant:	JUNCTION INDEP SCHOOL DISTRICT	Contact Name:	Cheryl Herring
Billed Entity Number:	141162	Address:	
Address:	1700 COLLEGE ST JUNCTION, TX 76849-4508	Phone:	(325) 446-3537
Phone:	(325) 446-3510	E-mail:	cheryl.herring@junctionisd.net
Application Type:	School district		

Services

Category One

Junction is a rural area. Internet access may not be accessible for all vendors.

Data Transmission and/or Internet Access

Function:	Leased Lit Fiber (with or without Internet Access)	Entities:	4	Installation and Initial Configuration?	N
Manufacturer:		Quantity:	200	Maintenance and Technical Support?	N
Minimum Capacity:	500 Mbps	Unit:	Circuits	Associated RFPs:	No
Maximum Capacity:	750 Mbps				

RFPs

No RFPs were provided with this Form 470.

Additional example of no RFP or location information in Narrative.

Form 470: 200001173

Billed Entity

Billed Entity		Contact Information	
Applicant:	EDNA INDEP SCHOOL DISTRICT	Contact Name:	Daniel Harper
Billed Entity Number:	141437	Address:	601 N. Wells EDNA, TX 77957
Address:	601 N. Wells EDNA, TX 77957	Phone:	(361) 782-3573
Phone:	(361) 782-3573	E-mail:	dharper@ednaisd.org
Application Type:	School district		

Consultant Information

Consultant:	E-Rate Consulting Specialists Inc.
Address:	
Phone:	(281) 232-0928
E-mail:	tim@ecspecialists.net

Services

Category One

This request is for Distance Learning (H.323 Interactive Video Service only). All solutions should include installation and initial configuration (if needed), a method to report service outages and receive basic technical support without additional service fees, and a service level agreement. All solutions can include special construction or one-time E-Rate eligible non-recurring costs as well as E-Rate eligible recurring circuit costs. Based on the bids and both a short term and long term effectiveness analysis, we will determine which of the solutions is most beneficial to the district.

Data Transmission and/or Internet Access

Function:	Leased Lit Fiber (with or without Internet Access)	Entities:	4	Installation and Initial Configuration?	Y
Manufacturer:		Quantity:	1	Maintenance and Technical Support?	N
Minimum Capacity:	1 Gbps	Unit:	Circuits	Associated RFPs:	No
Maximum Capacity:	1 Gbps				

RFPs

No RFPs were provided with this Form 470.

Appendix

Example of applicant who has provided addresses, but had to do so in a narrative.

Billed Entity		Contact Information	
Applicant:	PERQUIMANS COUNTY SCHOOL DISTRICT	Contact Name:	Martha Nixon
Billed Entity Number:	126926	Address:	
Address:	411 S EDENTON ROAD ST HERTFORD, NC 27944	Phone:	(252) 426-1258
Phone:	(252) 426-5741	E-mail:	marthanixon@pcs.k12.nc.us
Application Type:	School district		

Services

Category One

Lit Fiber Service Request - Seeking bids for 3 and 5 year contracts. WAN to schools and support sites: Four (4) Circuits at 1Gbps 1. PQ Central School (181 Winfall Blvd Winfall, NC 27985), 2. PQ Middle School (312 W. Main Street Winfall, NC 27985), 3. Hertford Grammar School (603 Dobbs Street Hertford, NC 27944) 4. Bus/ maintenance building (Jimmy Hunter Drive Hertford, NC 27944) Also, seeking bids for: ONE (1) 2Gbps, 5Gbps, or 10Gbps aggregation circuit that serve PQ High School (305 Edenton Road St. Hertford, NC 27944) and District Office Service must include all necessary equipment to light the fiber.

Data Transmission and/or Internet Access			
Function:	Leased Lit Fiber (with or without Internet Access)	Entities:	5
Manufacturer:		Quantity:	4
Minimum Capacity:	1 Gbps	Unit:	Circuits
Maximum Capacity:	1 Gbps	Installation and Initial Configuration?	Y
		Maintenance and Technical Support?	N
		Associated RFPs:	No

Data Transmission and/or Internet Access			
Function:	Leased Lit Fiber (with or without Internet Access)	Entities:	2
Manufacturer:		Quantity:	1
Minimum Capacity:	2 Gbps	Unit:	Circuits
Maximum Capacity:	10 Gbps	Installation and Initial Configuration?	Y
		Maintenance and Technical Support?	N
		Associated RFPs:	No

RFPs

No RFPs were provided with this Form 470.