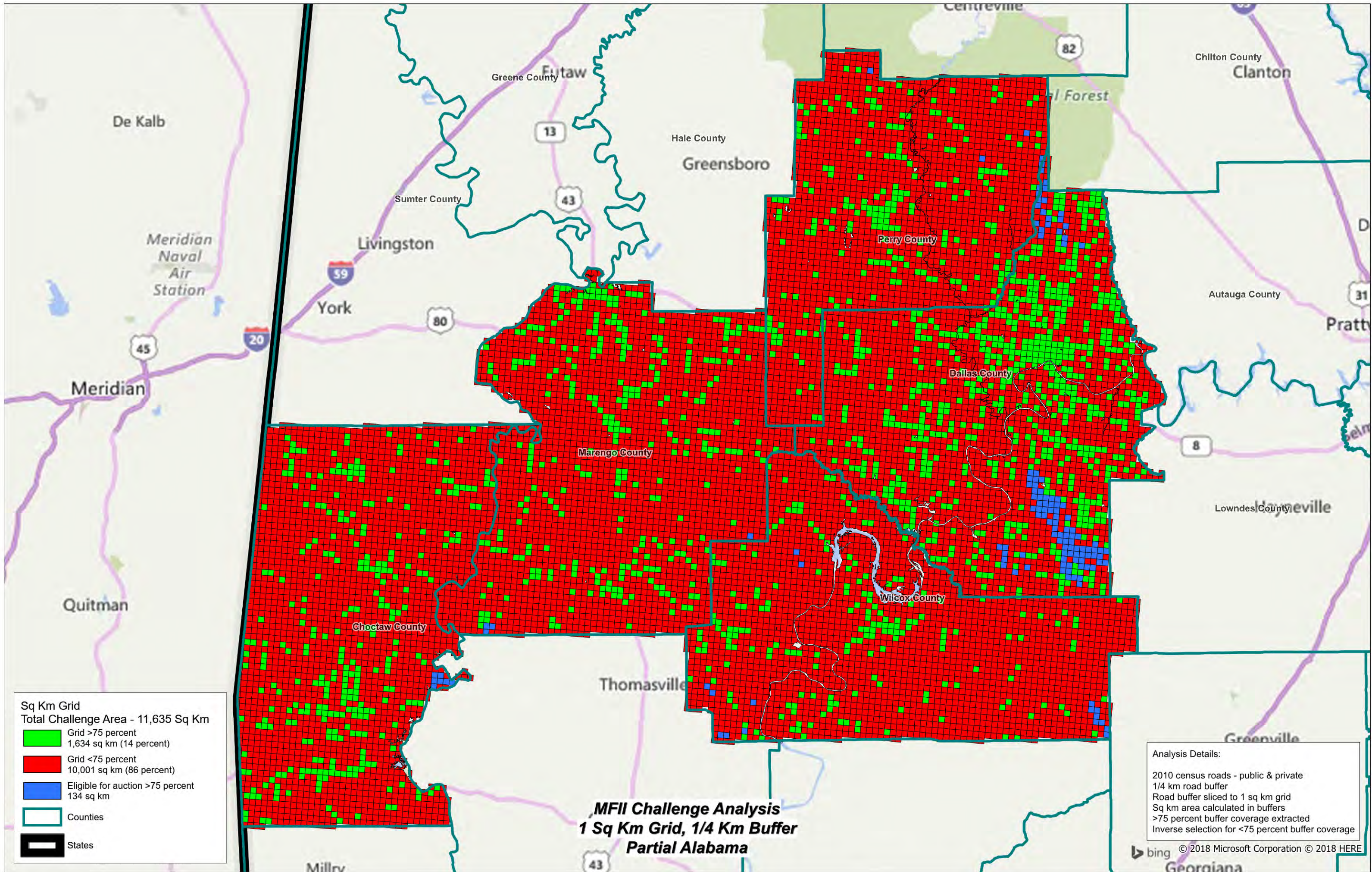


**Attachment D –  
MF-II Challenge Analysis Using Square Kilometer Grid Cell  
and 1/4 Kilometer Buffer Radius**

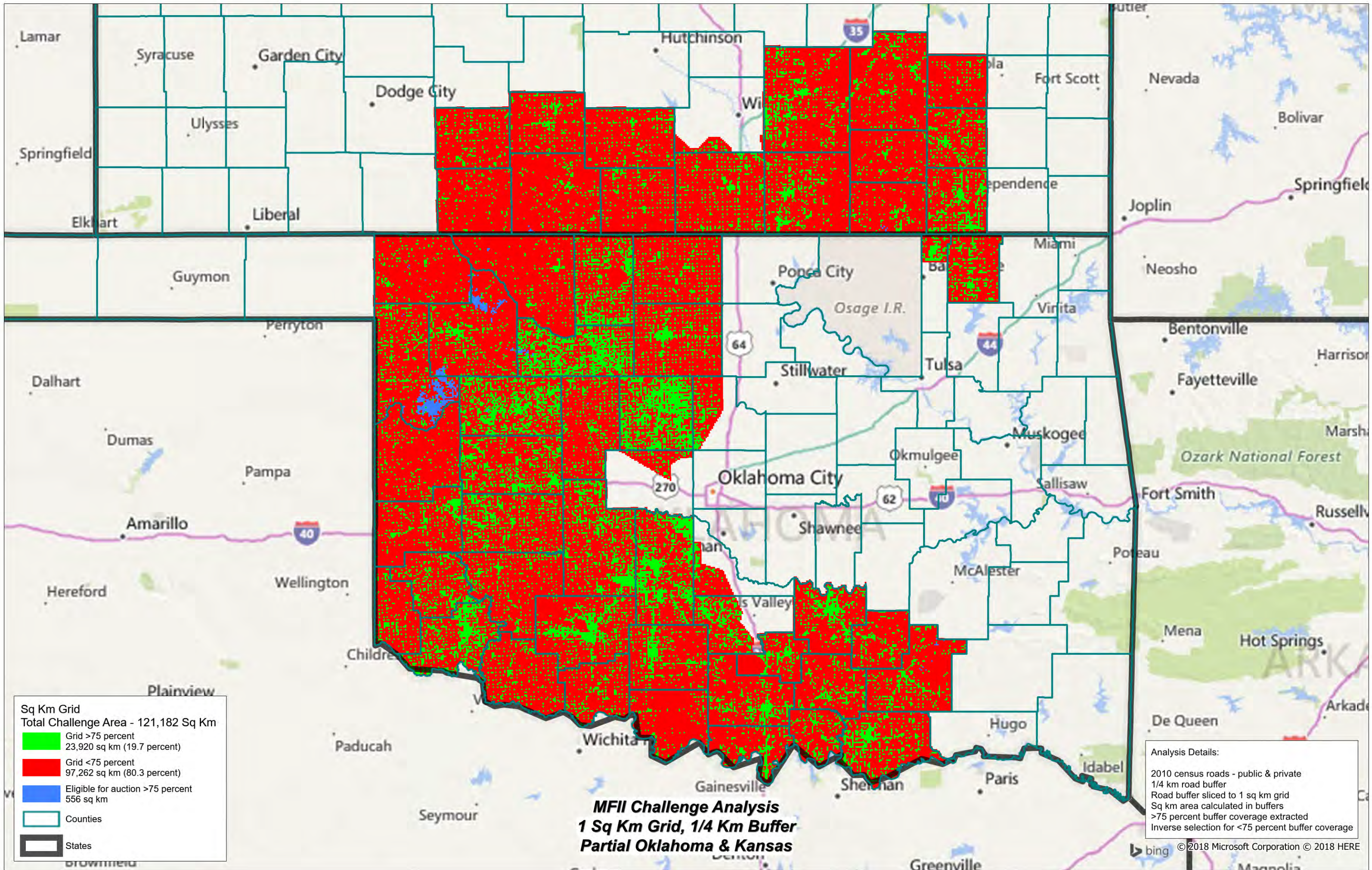




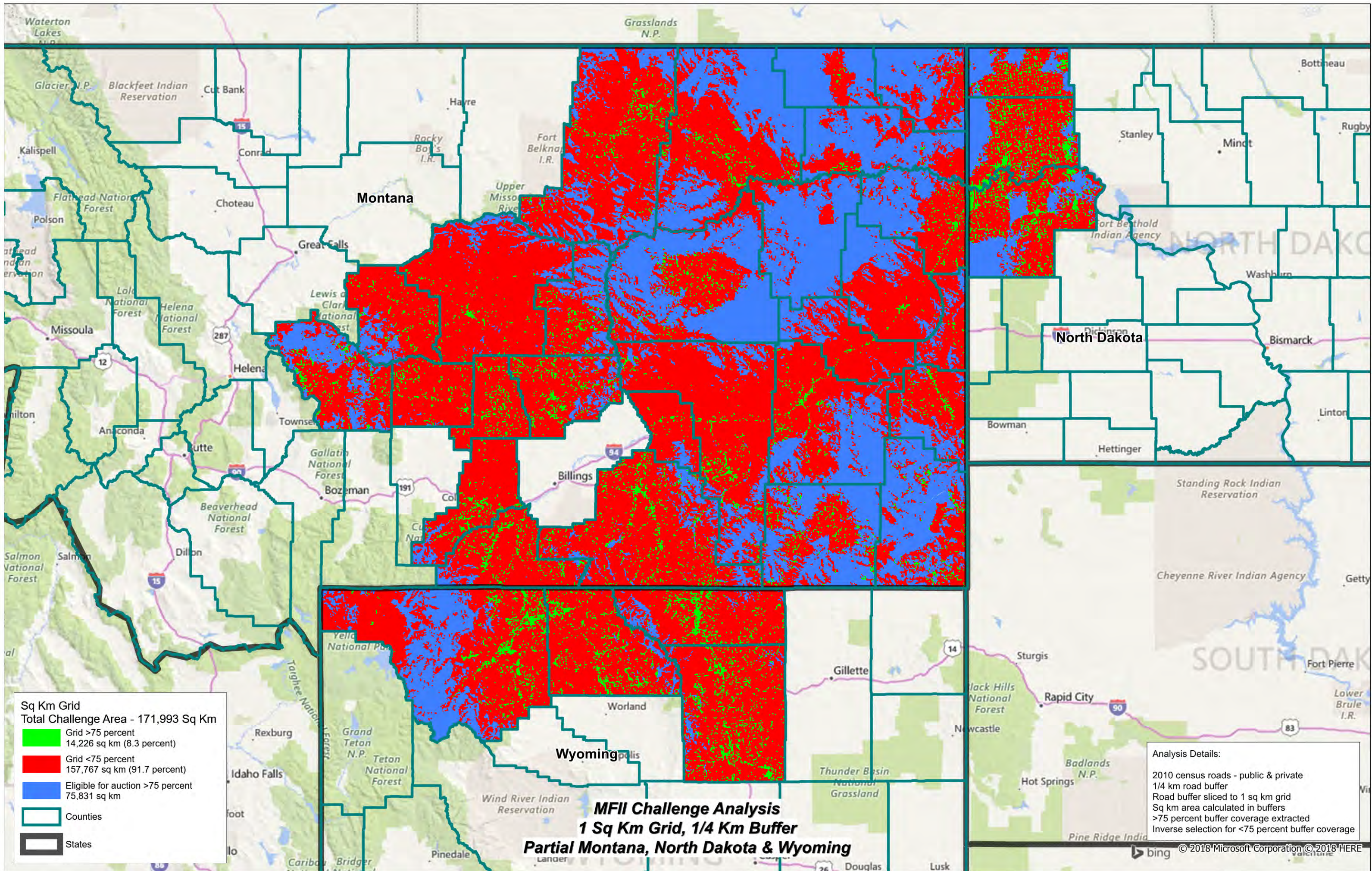














**Attachment E – Man Hour Testing Analysis**

## Testing Analysis based on 15,110 Km<sup>2</sup> - PTCI

	Description of off-road test	Number of Km <sup>2</sup> Cell Grids	Grids	Number of Tests	Total Minutes	Hours
	Over 75% based on roads driven	2,681	17.7%			
	need 1 off-road test	4,446	29.4%	4,446	66,690	1,112
	need 2 off-road tests	3,468	23.0%	6,936	104,040	1,734
	need 3 off-road tests	1,968	13.0%	5,904	88,560	1,476
	need 4 off-road tests	2,547	16.9%	10,188	152,820	2,547
	<b>Total Cell Grids</b>	<b>15,110</b>				
	<b>Cells Needing Off-Road Tests</b>	<b>12,429</b>				
	<b>Total Off-Road Tests</b>	<b>27,474</b>				
	Description of Drive test	Total Road miles within the 15110 Km <sup>2</sup> Cell Grids	Added % of Backtracking Drive test roads	Total Road miles to be tested	Average Drive test speed (MPH)	Hours needed to Drive test road miles
	Drive testing roads	14,524	35%	19,607	30	654
		<b>Minutes</b>				
	off-road test time (per test)	15				
	on-road test time (4 test per KM)	3.66				
	<b>Total Manhours</b>					<b>7,522</b>

## Testing Analysis based on 11,636 Km<sup>2</sup> - Pine Belt Cellular, Inc.

	Description of off-road test	Number of Km <sup>2</sup> Cell Grids	Grids	Number of Tests	Total Minutes	Hours
	Over 75% based on roads driven	1,634	14.0%			
	need 1 off-road test	2,310	19.9%	2,310	57,750	963
	need 2 off-road tests	2,282	19.6%	4,564	114,100	1,902
	need 3 off-road tests	1,635	14.1%	4,905	122,625	2,044
	need 4 off-road tests	3,775	32.4%	15,100	377,500	6,292
	<b>Total Cell Grids</b>	<b>11,636</b>				
	<b>Cells Needing Off-Road Tests</b>	<b>10,002</b>				
	<b>Total Off-Road Tests</b>	<b>26,879</b>				
	Description of Drive test	Total Road miles within the 9718 Km <sup>2</sup> Cell Grids	Added % of Backtracking Drive test roads	Total Road miles to be tested	Average Drive test speed (MPH)	Hours needed to Drive test road miles
	Drive testing roads	9,406	35%	12,698	30	423
		<b>Minutes</b>				
	off-road test time (per test)	25				
	on-road test time (4 test per KM)	3.89				
	<b>Total Manhours</b>					<b>11,623</b>