

Attachment A – Oklahoma Panhandle Materials



Sq Km Grid
Total Challenge Area - 15,109 Sq Km

	Grid >75 percent 2,681 sq km (17.7 percent)
	Grid <75 percent 12,428 sq km (82.3 percent)
	Eligible for auction >75 percent 130 sq km
	Counties
	States

MFII Challenge Analysis
1 Sq Km Grid, 1/4 Km Buffer
Oklahoma Panhandle

Analysis Details:

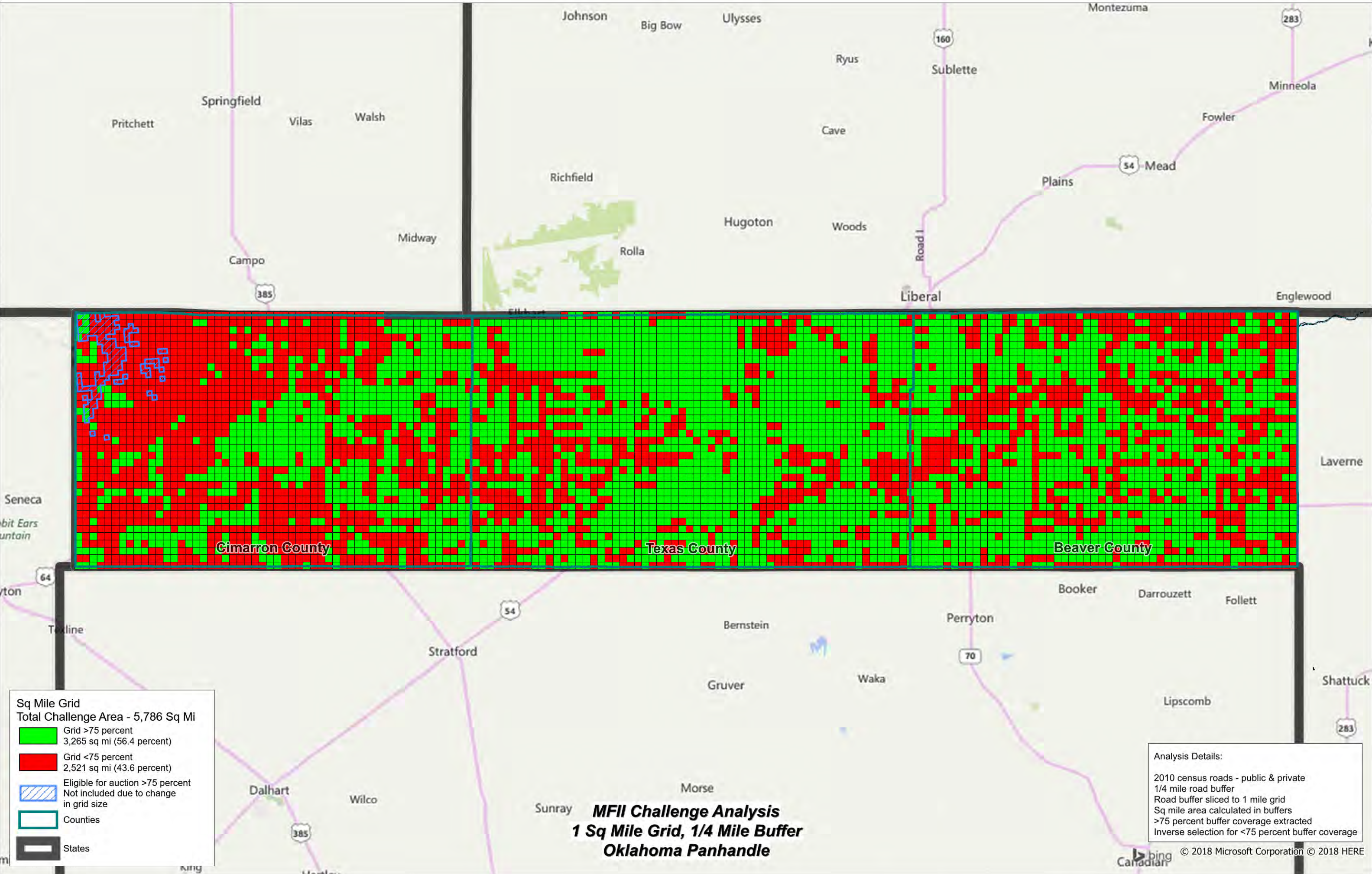
2010 census roads - public & private
1/4 km road buffer
Road buffer sliced to 1 sq km grid
Sq km area calculated in buffers
>75 percent buffer coverage extracted
Inverse selection for <75 percent buffer coverage

Oklahoma Testing Analysis 250m Buffer Radius based on 15,110 Km²

Description of off-road test	Number of Km ² Cell Grids	Grids	Number of Tests	Total Minutes	Hours
Over 75% based on roads driven	2,681	17.7%			
need 1 off-road test	4,446	29.4%	4,446	66,690	1,112
need 2 off-road tests	3,468	23.0%	6,936	104,040	1,734
need 3 off-road tests	1,968	13.0%	5,904	88,560	1,476
need 4 off-road tests	2,547	16.9%	10,188	152,820	2,547
Total Grid Cells	15,110				
Cells Needing Off-Road Tests	12,429				
Total Off-Road Tests	27,474				
Grid Cells with No Roads	2,683				

Description of Drive test	Total Road miles within the 15,110 Km ² Grid Cells	Added % of Backtracking Drive test roads	Total Road miles to be tested	Average Drive test speed (MPH)	Hours needed to Drive test road miles
Drive testing roads	14,524	35%	19,607	30	654

	Minutes	
off-road test time (per test)	15	
on-road test time (4 test per KM)	3.66	
Total Manhours		7,522



Sq Mile Grid

Total Challenge Area - 5,786 Sq Mi

Grid >75 percent
3,265 sq mi (56.4 percent)

Grid <75 percent
2,521 sq mi (43.6 percent)

Eligible for auction >75 percent
Not included due to change
in grid size

Counties

States

Analysis Details:

2010 census roads - public & private

1/4 mile road buffer

Road buffer sliced to 1 mile grid

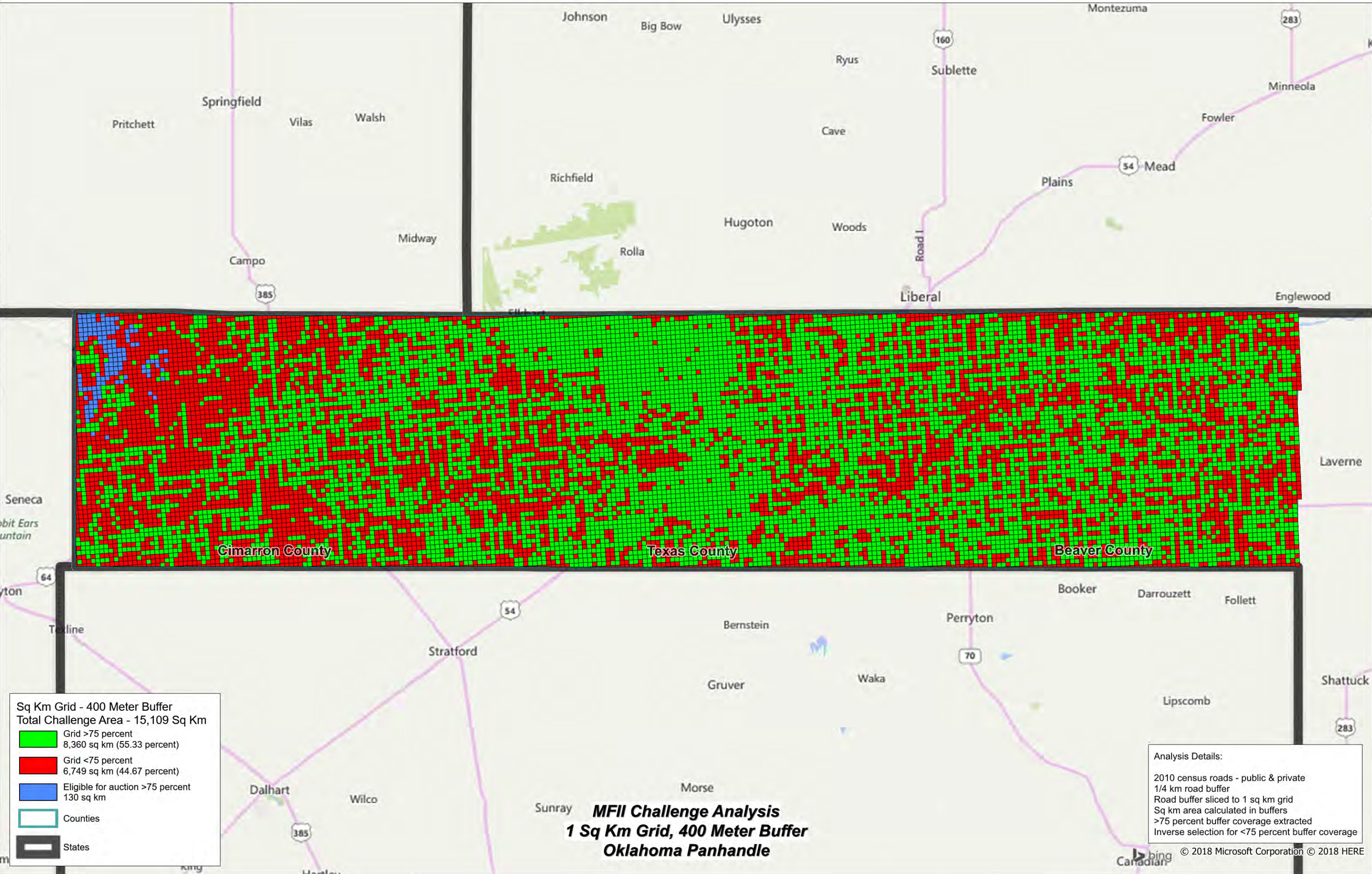
Sq mile area calculated in buffers

>75 percent buffer coverage extracted

Inverse selection for <75 percent buffer coverage

© 2018 Microsoft Corporation © 2018 HERE

MFII Challenge Analysis
1 Sq Mile Grid, 1/4 Mile Buffer
Oklahoma Panhandle



Sq Km Grid - 400 Meter Buffer
Total Challenge Area - 15,109 Sq Km

<div></div>	Grid >75 percent 8,360 sq km (55.33 percent)
<div></div>	Grid <75 percent 6,749 sq km (44.67 percent)
<div></div>	Eligible for auction >75 percent 130 sq km
<div></div>	Counties
<div></div>	States

MFII Challenge Analysis
1 Sq Km Grid, 400 Meter Buffer
Oklahoma Panhandle

Analysis Details:

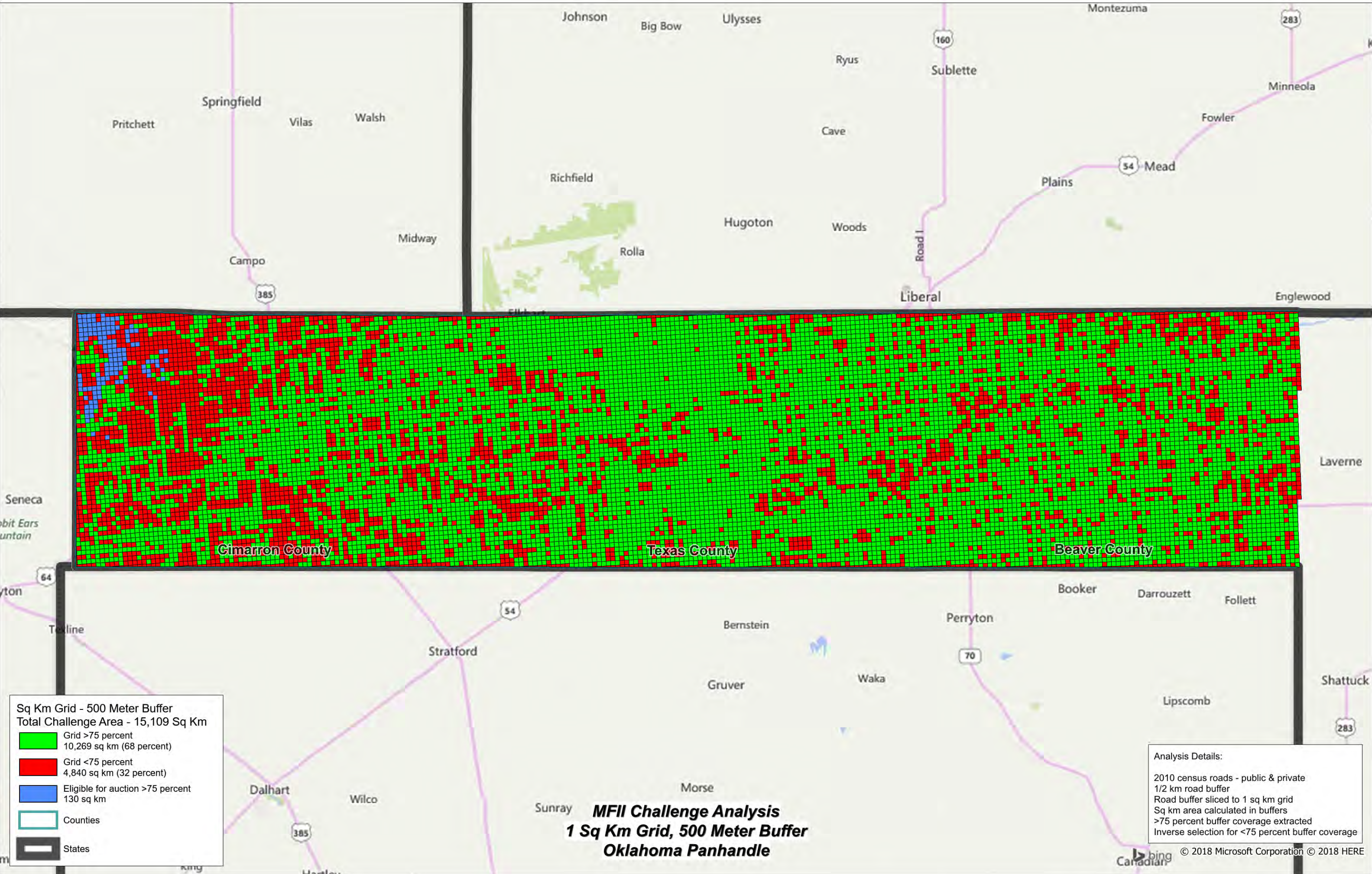
2010 census roads - public & private
1/4 km road buffer
Road buffer sliced to 1 sq km grid
Sq km area calculated in buffers
>75 percent buffer coverage extracted
Inverse selection for <75 percent buffer coverage

Oklahoma Testing Analysis 400m Buffer Radius based on 15,110 Km²

Description of off-road test	Number of Km ² Cell Grids	Grids	Number of Tests	Total Minutes	Hours
Over 75% based on roads driven	8,360	55.3%			
need 1 off-road test	4,861	32.2%	4,861	72,915	1,215
need 2 off-road tests	1,889	12.5%	3,778	56,670	945
need 3 off-road tests		0.0%	-	-	-
need 4 off-road tests		0.0%	-	-	-
Total Grid Cells	15,110				
Cells Needing Off-Road Tests	6,750				
Total Off-Road Tests	8,639				
Grid Cells with No Roads	2,683				

Description of Drive test	Total Road miles within the 15,110 Km ² Grid Cells	Added % of Backtracking Drive test roads	Total Road miles to be tested	Average Drive test speed (MPH)	Hours needed to Drive test road miles
Drive testing roads	14,524	35%	19,607.40	30	654

	Minutes	
off-road test time (per test)	15	
on-road test time (4 test per KM)	1.17	
Total Manhours		2,813



Oklahoma Testing Analysis 500m Buffer Radius based on 15,110 Km²

Description of off-road test	Number of Km ² Grid Cells	Grids	Number of Tests	Total Minutes	Hours
Over 75% based on roads driven	10,270	68.0%			
need 1 off-road test	4,840	32.0%	4,840	72,600	1,210
need 2 off-road tests		0.0%	-	-	-
need 3 off-road tests		0.0%	-	-	-
need 4 off-road tests		0.0%	-	-	-
Total Grid Cells	15,110				
Cells Needing Off-Road Tests	4,840				
Total Off-Road Tests	4,840				
Grid Cells with No Roads	2,683				

Description of Drive test	Total Road miles within the 15,110 Km ² Grid Cells	Added % of Backtracking Drive test roads	Total Road miles to be tested	Average Drive test speed (MPH)	Hours needed to Drive test road miles
Drive testing roads	14,524	35%	19,607.40	30	654

	Minutes	
off-road test time (per test)	15	
on-road test time (4 test per KM)	0.95	
Total Manhours		1,864