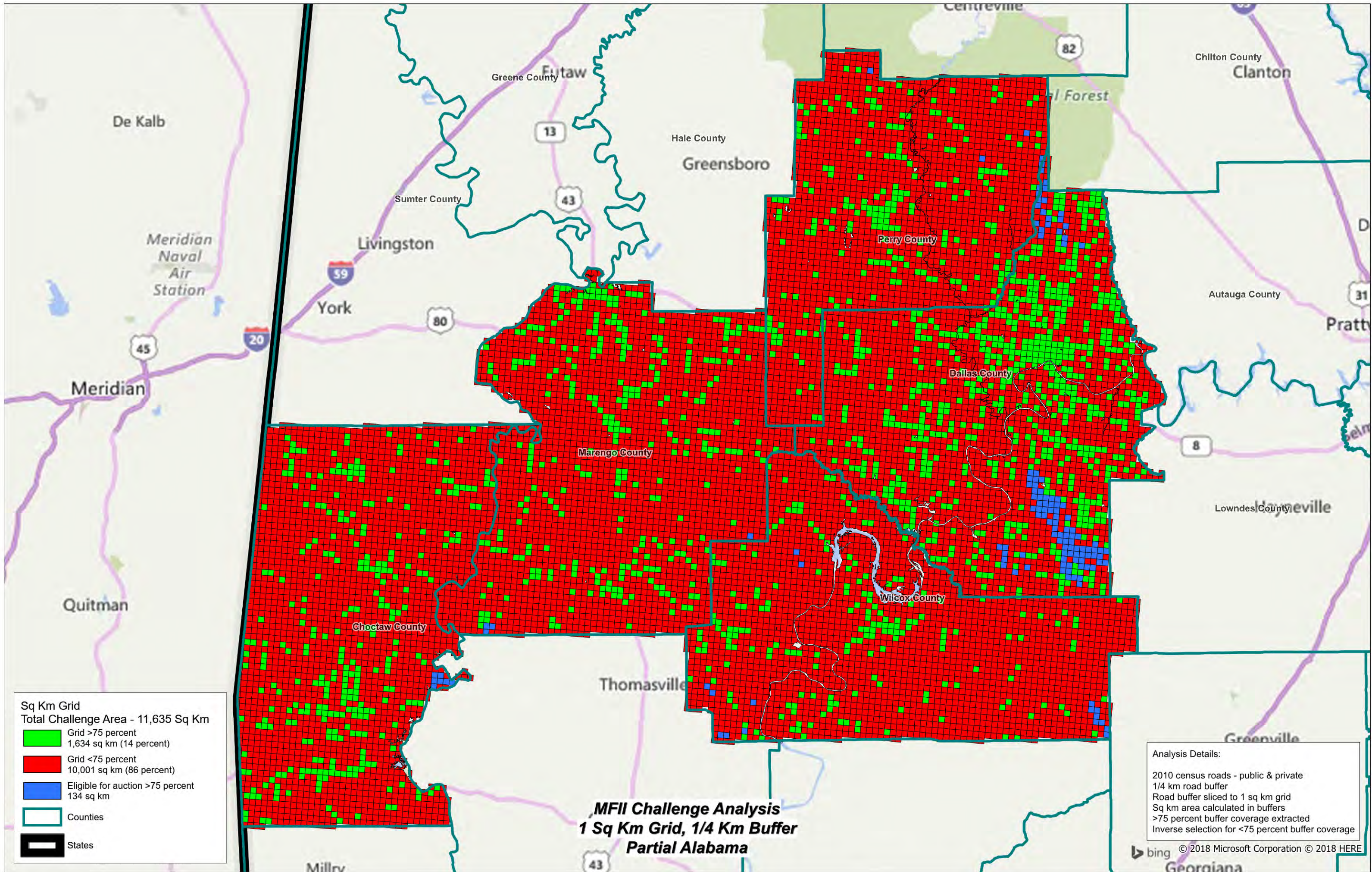


## **Attachment B – Partial Alabama Materials**



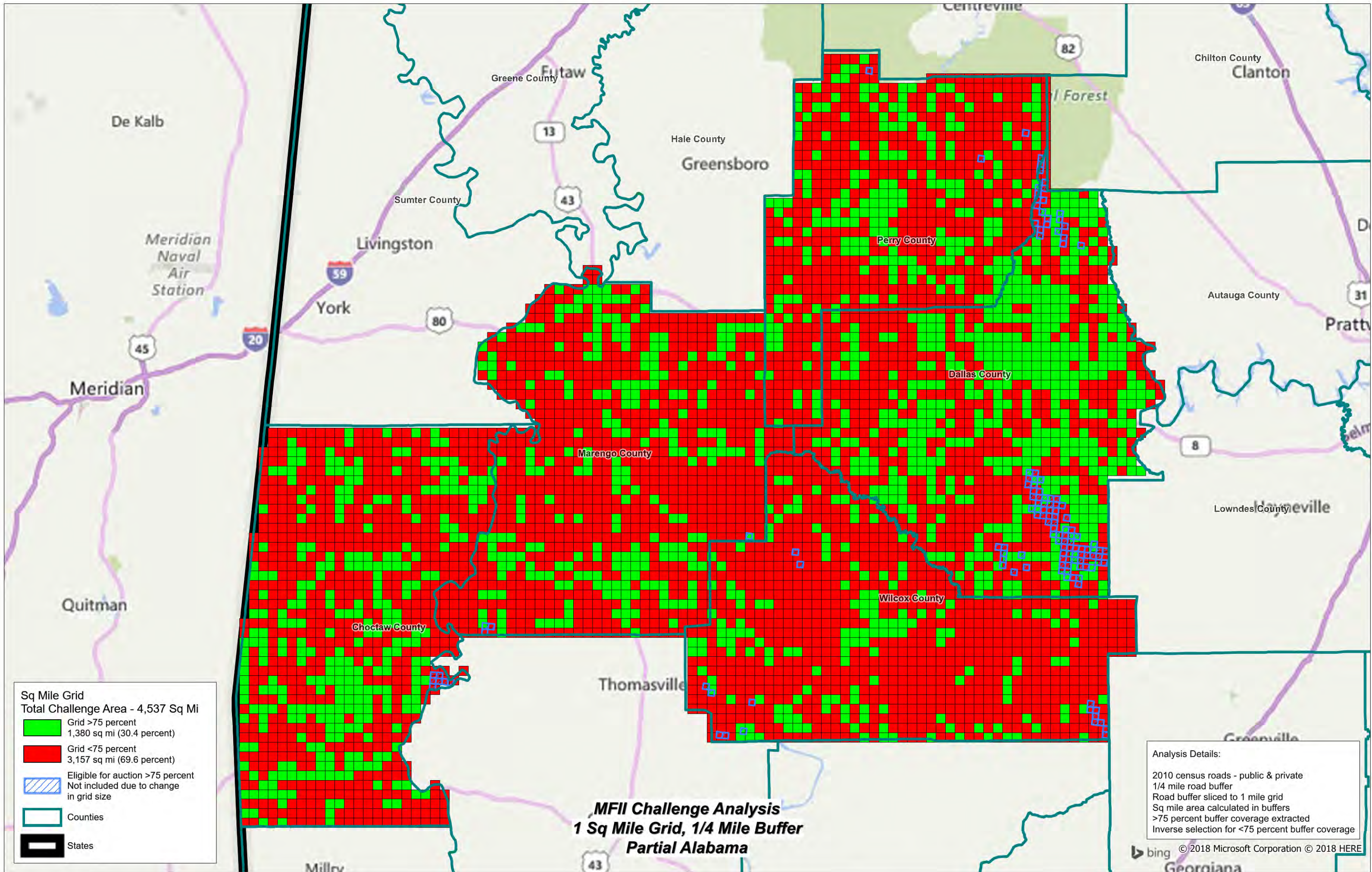




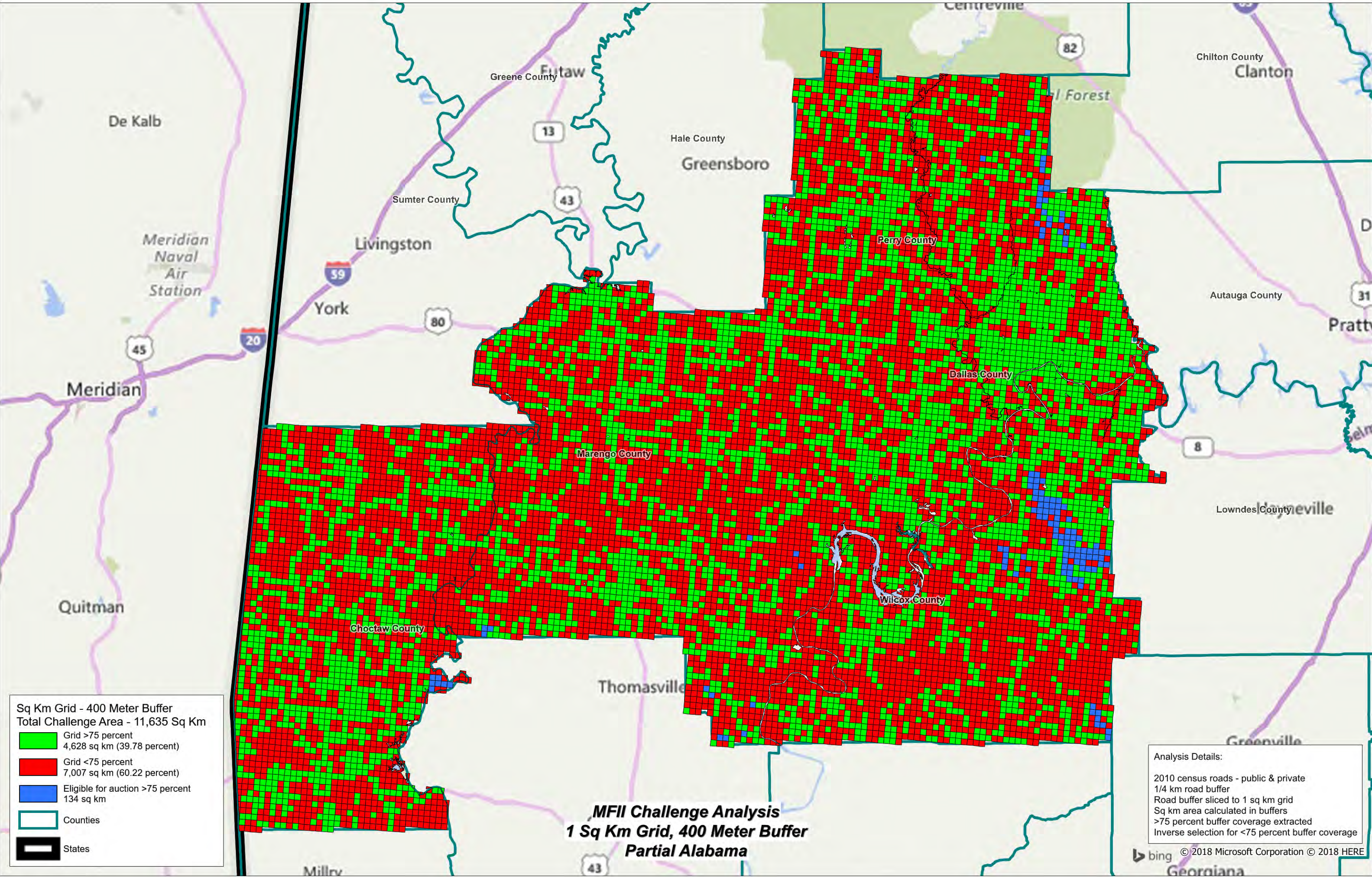
## Alabama Testing Analysis using 250m Buffer Radius based on 11,636 Km<sup>2</sup>

Description of off-road test	Number of Km <sup>2</sup> Cell Grids	Grids	Number of Tests	Total Minutes	Hours
Over 75% based on roads driven	1,634	14.0%			
need 1 off-road test	2,310	19.9%	2,310	57,750	963
need 2 off-road tests	2,282	19.6%	4,564	114,100	1,902
need 3 off-road tests	1,635	14.1%	4,905	122,625	2,044
need 4 off-road tests	3,775	32.4%	15,100	377,500	6,292
<b>Total Cell Grids</b>	<b>11,636</b>				
<b>Cells Needing Off-Road Tests</b>	<b>10,002</b>				
<b>Total Off-Road Tests</b>	<b>26,879</b>				
<b>Grid Cells with No Roads</b>	<b>3,408</b>				
Description of Drive test	Total Road miles within the 9718 Km <sup>2</sup> Cell Grids	Added % of Backtracking Drive test roads	Total Road miles to be tested	Average Drive test speed (MPH)	Hours needed to Drive test road miles
Drive testing roads	9,406	35%	12,698	30	423
	<b>Minutes</b>				
off-road test time (per test)	25				
on-road test time (4 test per KM)	3.89				
<b>Total Manhours</b>					<b>11,623</b>











## Alabama Testing Analysis using 400m Buffer Radius based on 11,635 Km<sup>2</sup>

Description of off-road test	Number of Km <sup>2</sup> Cell Grids	Grids	Number of Tests	Total Minutes	Hours
Over 75% based on roads driven	4,627	39.8%			
need 1 off-road test	3,820	32.8%	3,820	95,500	1,592
need 2 off-road tests	3,188	27.4%	6,376	159,400	2,657
need 3 off-road tests		0.0%	-	-	-
need 4 off-road tests		0.0%	-	-	-
<b>Total Grid Cells</b>	<b>11,635</b>				
<b>Cells Needing Off-Road Tests</b>	<b>7,008</b>				
<b>Total Off-Road Tests</b>	<b>10,196</b>				
<b>Grid Cells with No Roads</b>	<b>3,408</b>				

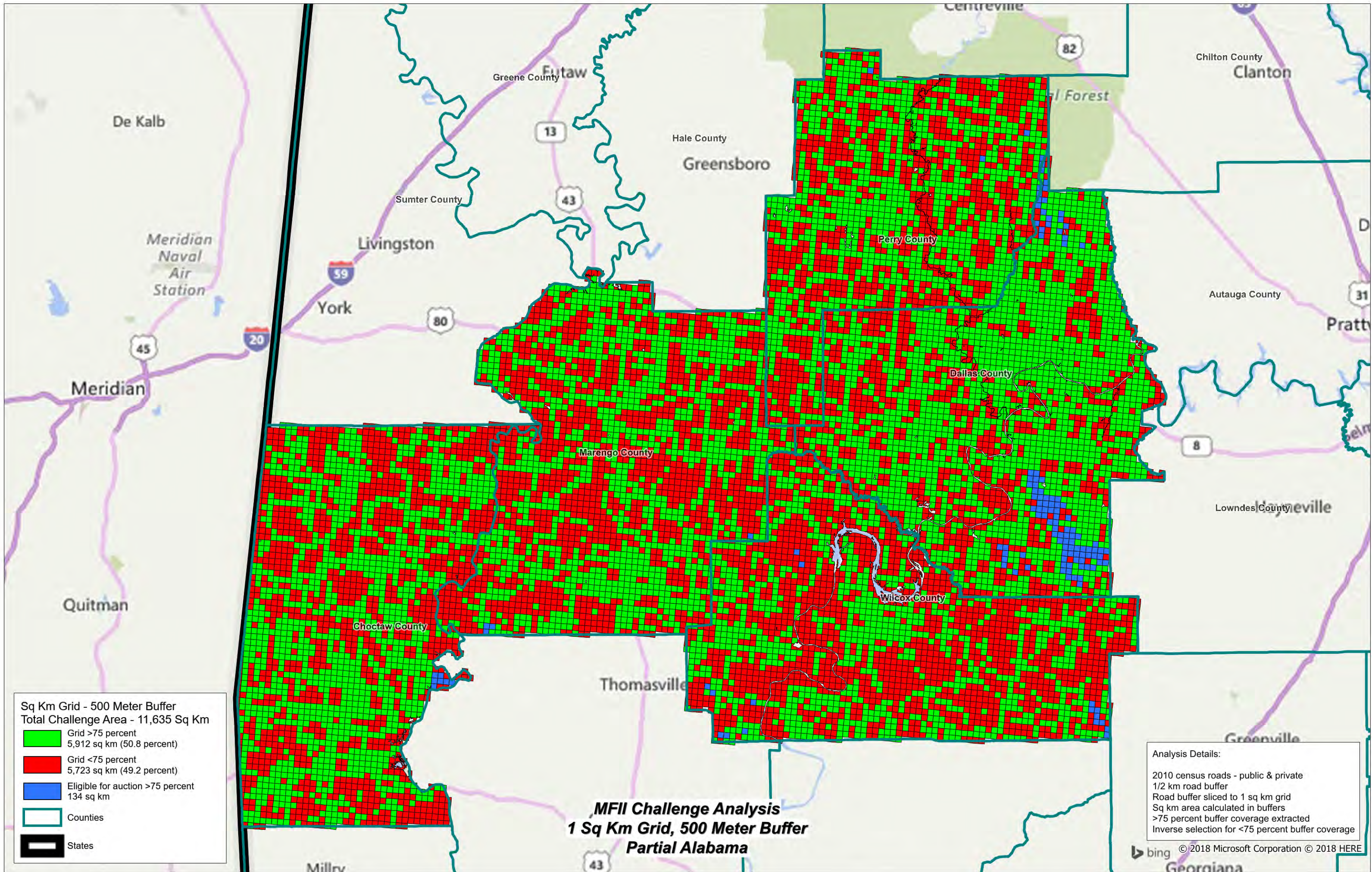
  

Description of Drive test	Total Road miles within the 11,635 Km <sup>2</sup> Grid Cells	Added % of Backtracking Drive test roads	Total Road miles to be tested	Average Drive test speed (MPH)	Hours needed to Drive test road miles
Drive testing roads	9,406	35%	12,698.10	30	423

	<b>Minutes</b>	
off-road test time (per test)	25	
on-road test time (4 test per KM)	1.37	
<b>Total Manhours</b>		<b>4,672</b>







## Alabama Testing Analysis using 500m Buffer Radius based on 11,635 Km<sup>2</sup>

Description of off-road test	Number of Km <sup>2</sup> Cell Grids	Grids	Number of Tests	Total Minutes	Hours
Over 75% based on roads driven	5,911	50.8%			
need 1 off-road test	5,724	49.2%	5,724	143,100	2,385
need 2 off-road tests		0.0%	-	-	-
need 3 off-road tests		0.0%	-	-	-
need 4 off-road tests		0.0%	-	-	-
<b>Total Grid Cells</b>	<b>11,635</b>				
<b>Cells Needing Off-Road Tests</b>	<b>5,724</b>				
<b>Total Off-Road Tests</b>	<b>5,724</b>				
<b>Grid Cells with No Roads</b>	<b>3,408</b>				

Description of Drive test	Total Road miles within the 11,635 Km <sup>2</sup> Grid Cells	Added % of Backtracking Drive test roads	Total Road miles to be tested	Average Drive test speed (MPH)	Hours needed to Drive test road miles
Drive testing roads	9,406	35%	12,698.10	30	423

	<b>Minutes</b>	
off-road test time (per test)	25	
on-road test time (4 test per KM)	1.07	
<b>Total Manhours</b>		<b>2,808</b>