



June 12, 2019

Via ECFS

Ms. Marlene H. Dortch
Secretary
Federal Communications Commission
445 12th Street, SW
Washington, DC 20554

Re: *Petition of USTelecom for Forbearance Pursuant to 47 U.S.C. § 160(c) to Accelerate Investment in Broadband and Next-Generation Networks*, WC Docket No. 18-141

Dear Ms. Dortch:

On June 10, 2019, Dane Jasper of Sonic Telecom, LLC (“Sonic”) participated in several ex parte meetings regarding the above-captioned proceeding. The substance of those meetings is described in a separate ex parte notification filed today by INCOMPAS. During the meetings, Mr. Jasper presented the attached diagrams, some of which are confidential pursuant to the *Protective Order* for this proceeding.¹

In accordance with the *Protective Order*, Sonic herein submits the redacted version of the diagrams. Sonic has designated for confidential treatment the marked portions of the attached documents. Sonic is also filing one copy of the documents containing the confidential information with the Secretary’s Office and sending two copies of the documents containing the confidential information to Pamela Megna, Competition Policy Division, Wireline Competition Bureau.

Please contact me if you have any questions.

Sincerely,

A handwritten signature in blue ink, appearing to read "J. Veach", is written over a light blue rectangular background.

Julie A. Veach
Counsel to Sonic Telecom, LLC

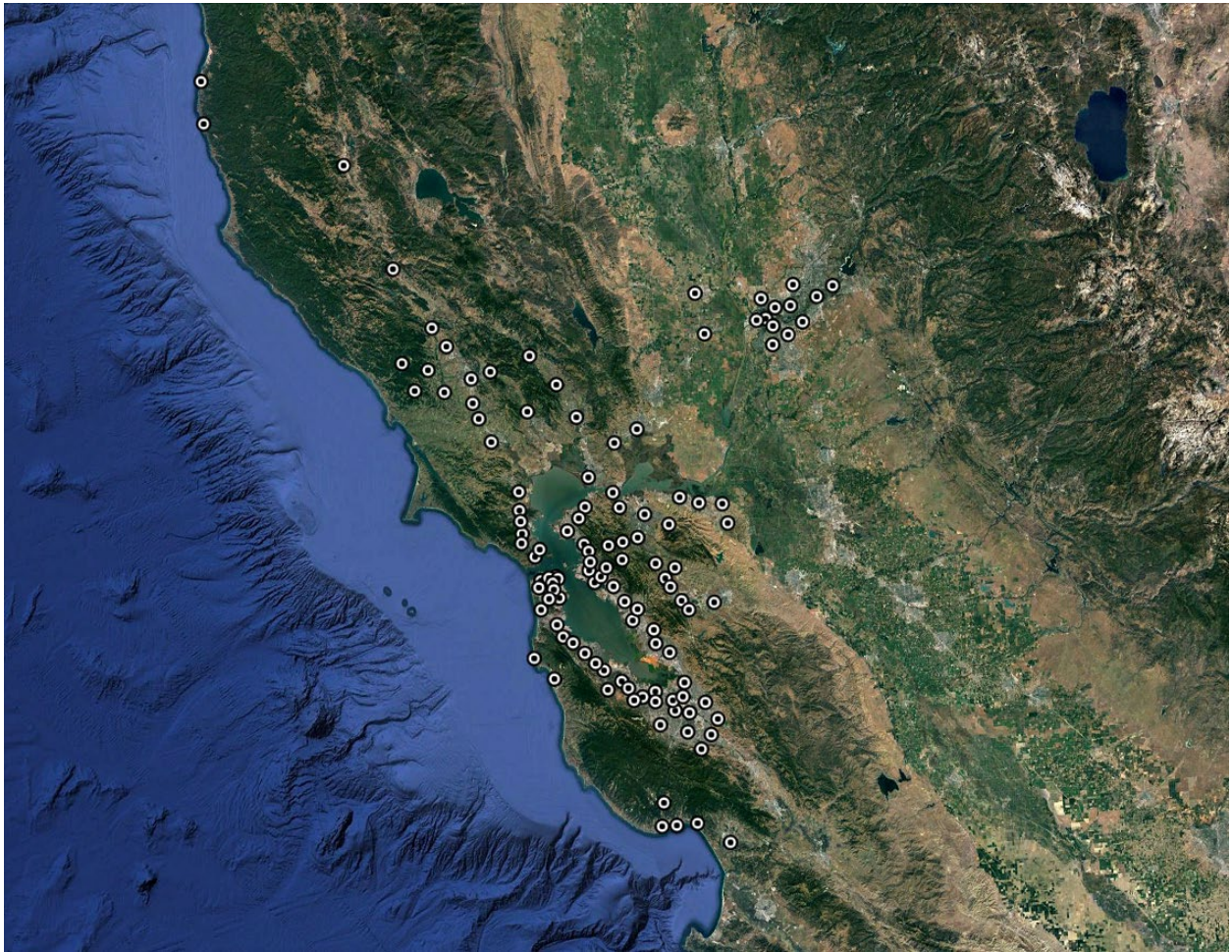
Attachment

cc: Pamela Megna

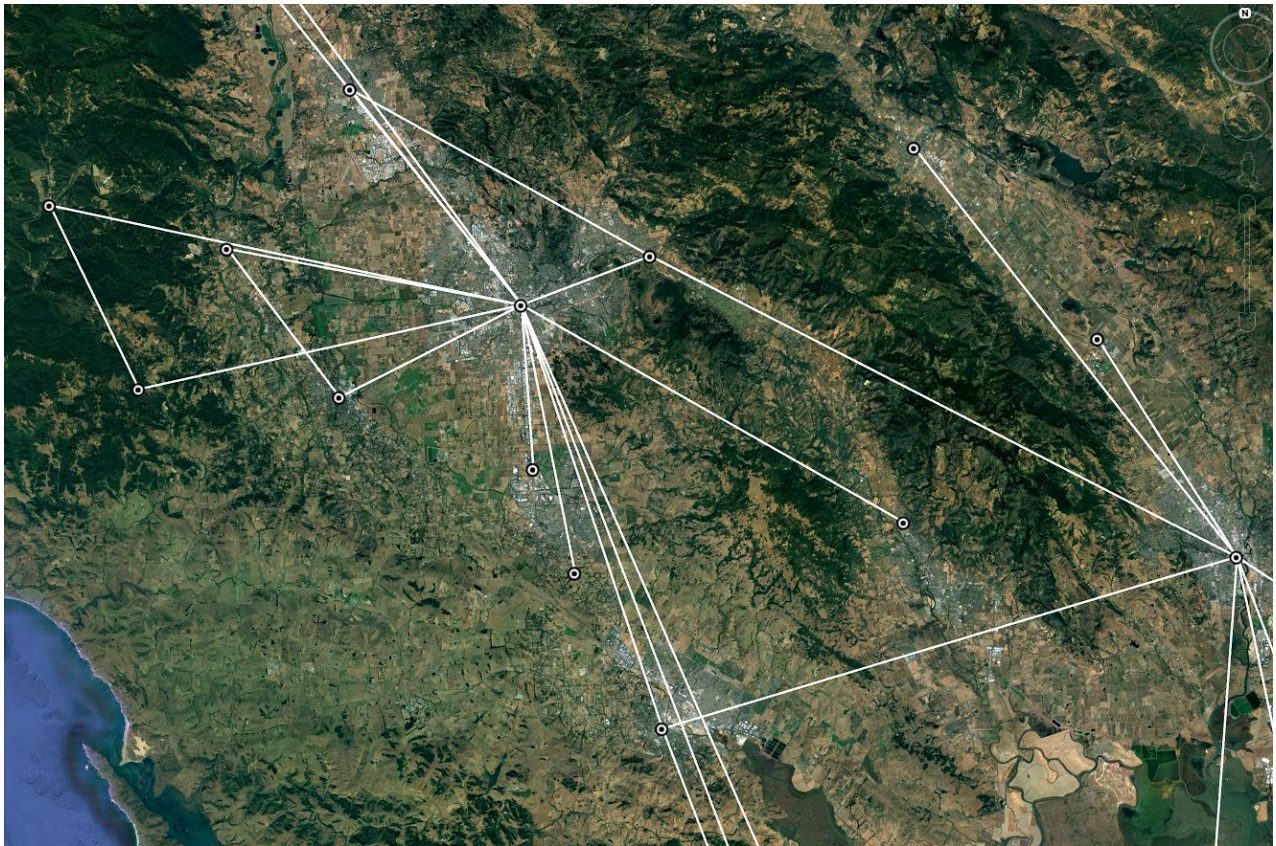
¹ *Petition of USTelecom for Forbearance Pursuant to 47 U.S.C. § 160(c) to Accelerate Investment in Broadband and Next-Generation Networks*, 33 FCC Rcd. 5290 (Wireline Comp. Bur. 2018) (“*Protective Order*”).

REDACTED – FOR PUBLIC INSPECTION

ATTACHMENT



The circles represent wire center central office where Sonic Telecom colocates its equipment.



The white lines represent UNE interoffice dark fiber.

REDACTED – FOR PUBLIC INSPECTION

The green represents copper UNE loops.

REDACTED – FOR PUBLIC INSPECTION

The red represents homes and businesses connected with UNE loops.

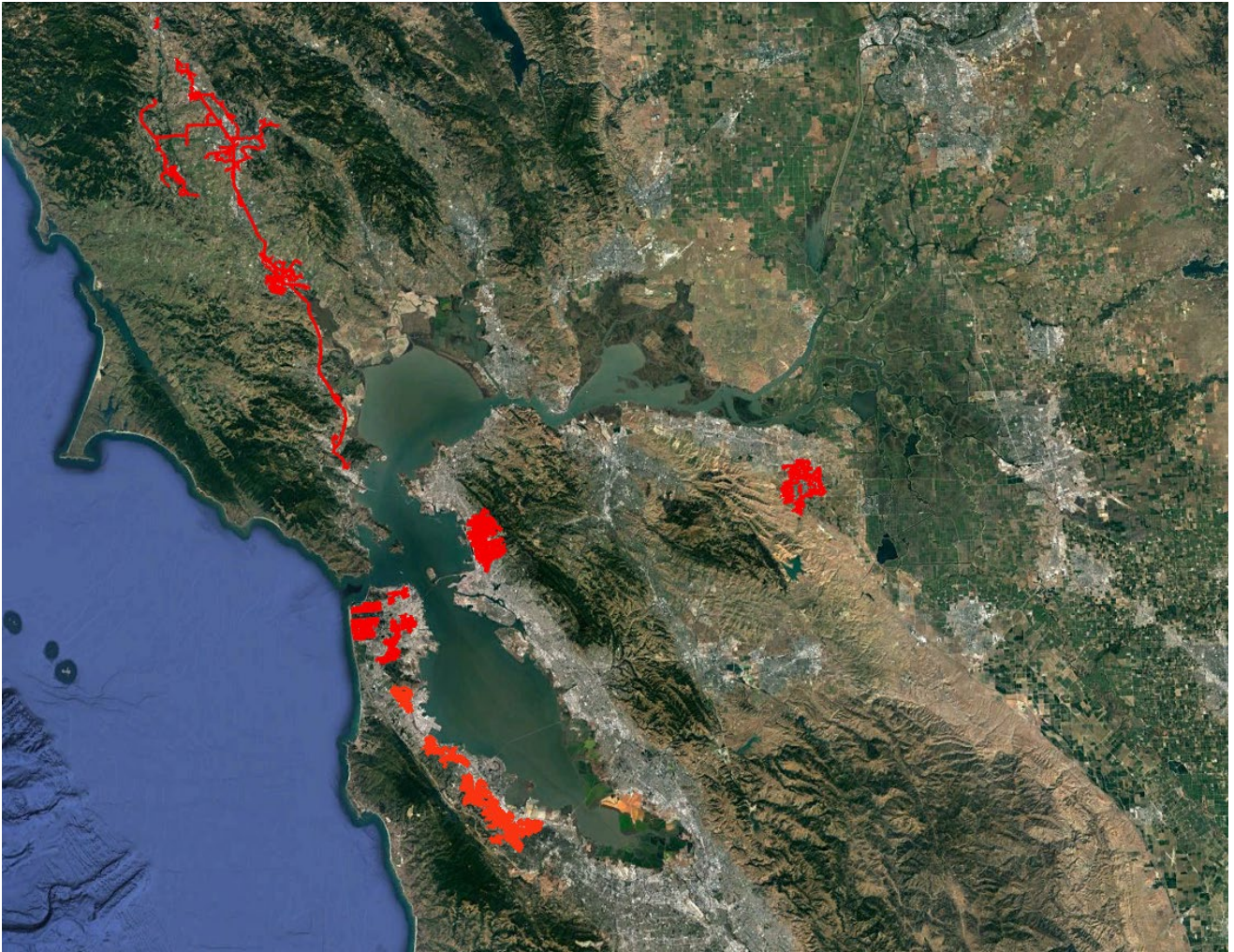
REDACTED – FOR PUBLIC INSPECTION

The red represents fiber build.

REDACTED – FOR PUBLIC INSPECTION

Close-up of area with fiber build.

REDACTED – FOR PUBLIC INSPECTION



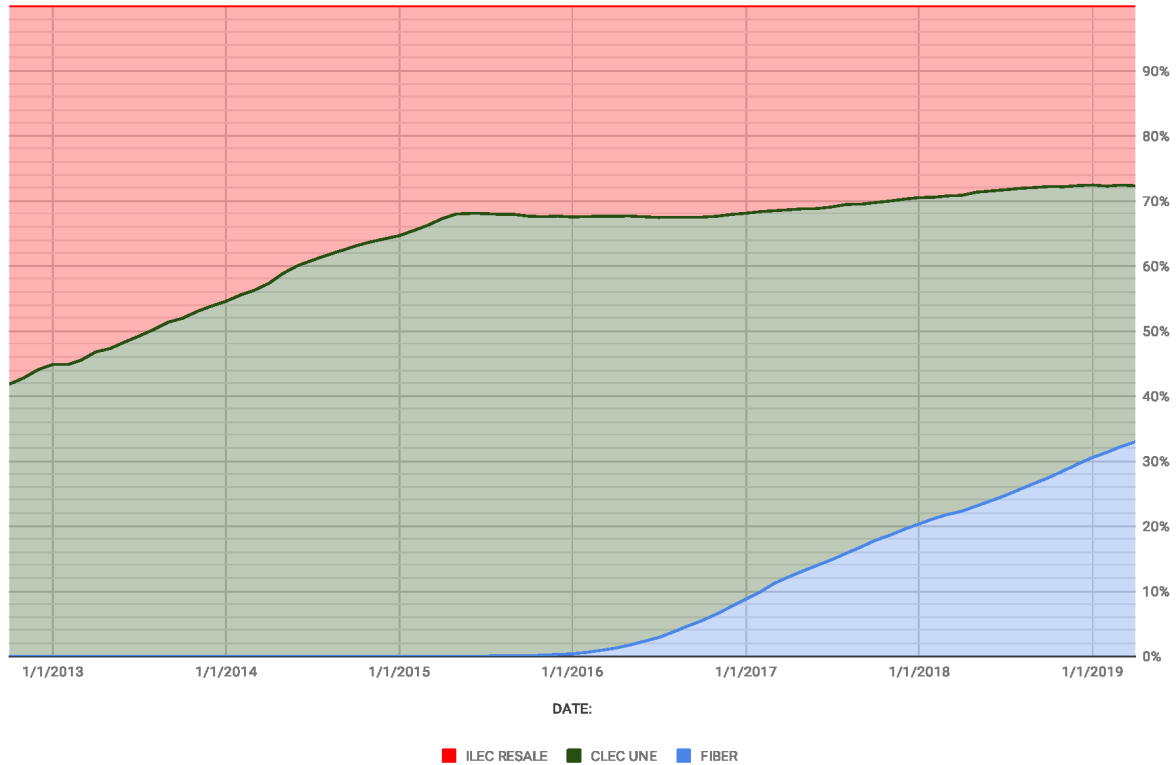
Regional Fiber build-out

REDACTED – FOR PUBLIC INSPECTION

Brentwood CA, 11,000 homes connected with fiber

REDACTED – FOR PUBLIC INSPECTION

Sonic Product mix: ILEC Commercial Resale, CLEC UNE-L and Sonic Fiber



Sonic product mix.