

# Measuring Broadband America

February 23, 2018

**Presented to:**  
MBA Collaborative  
Washington DC



**London**

135 Park Street, London, SE1 9EA



**Washington DC**

1775 Tysons Boulevard, Virginia, VA 22102

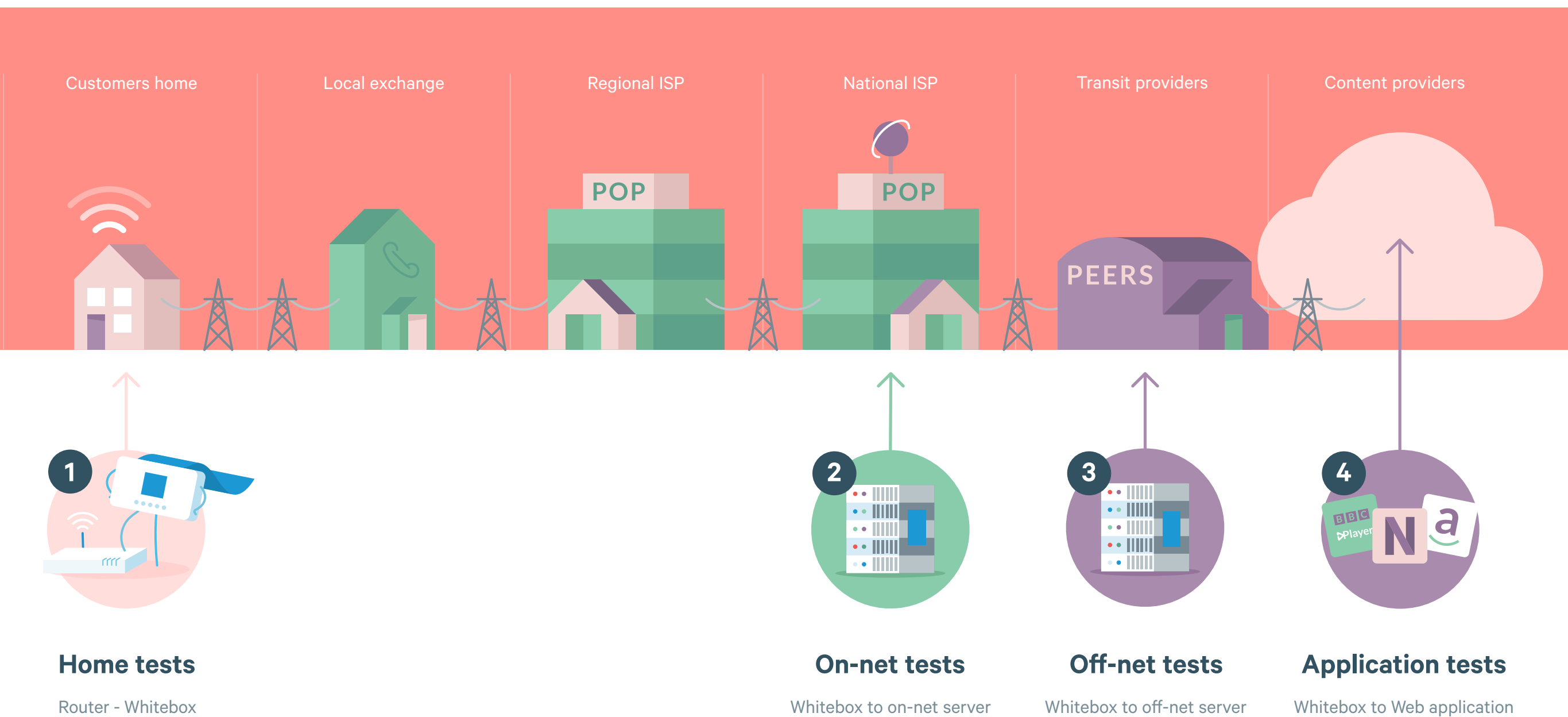
# 2017 Review

# 2017 MBA new updates

- 2017 report status
- Service/modem upgrades policy
- Increase number of Whiteboxes, per speed tier to 40
- Extend the reporting period by 14 days to account for hurricane
- New sign-up page URL with country, ISP and speed tier pre-populated
- Volunteer accepts the EULA when signing up to be part of the project
- Started to automate the validation process for some ISPs
- New lightweight test

# 2018 Review

# End-to-end measurement



# New developments



New analytics system



New test suite



New router integrations



New mobile apps with Wi-Fi measurements



Live data

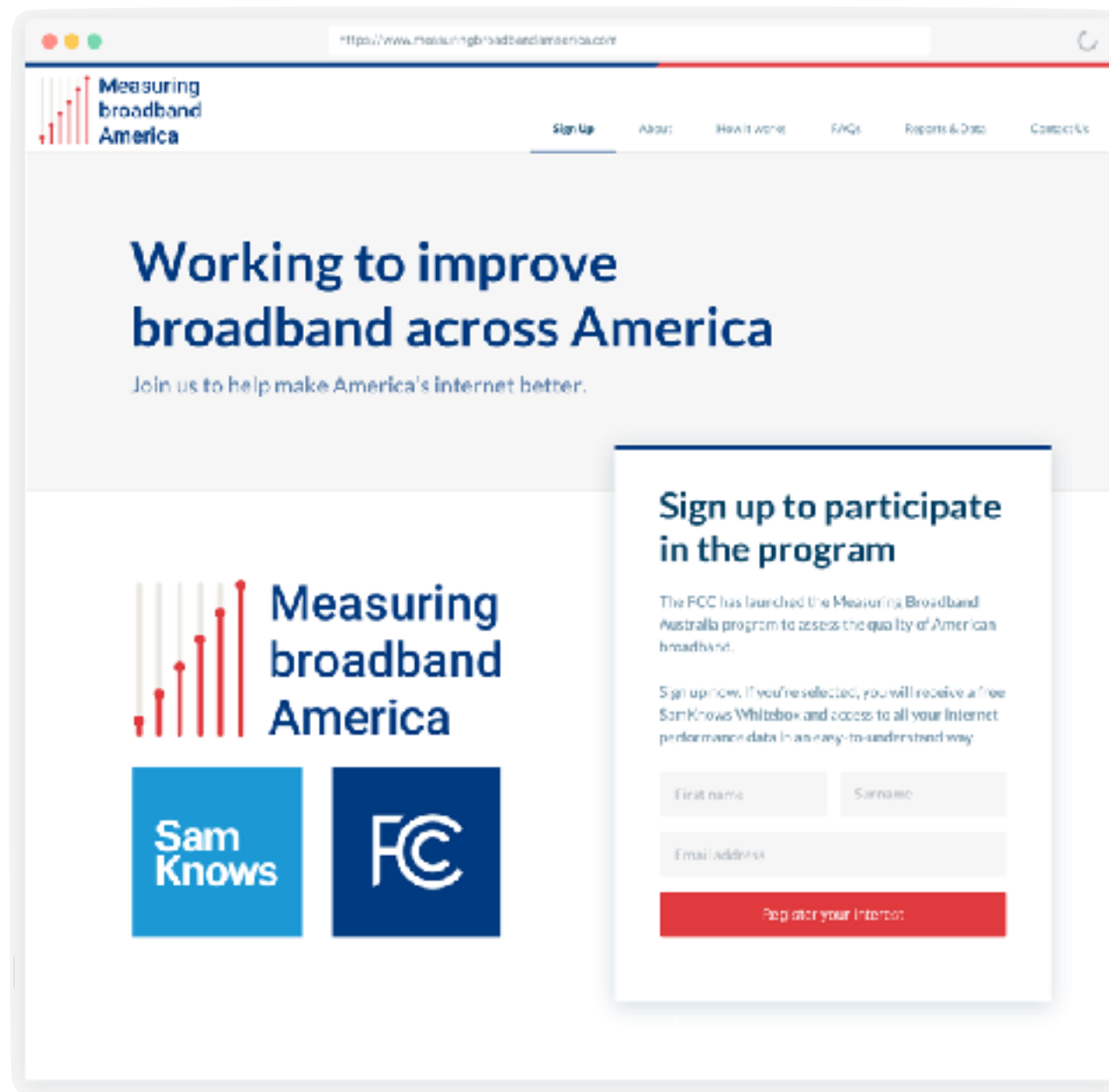


APIs



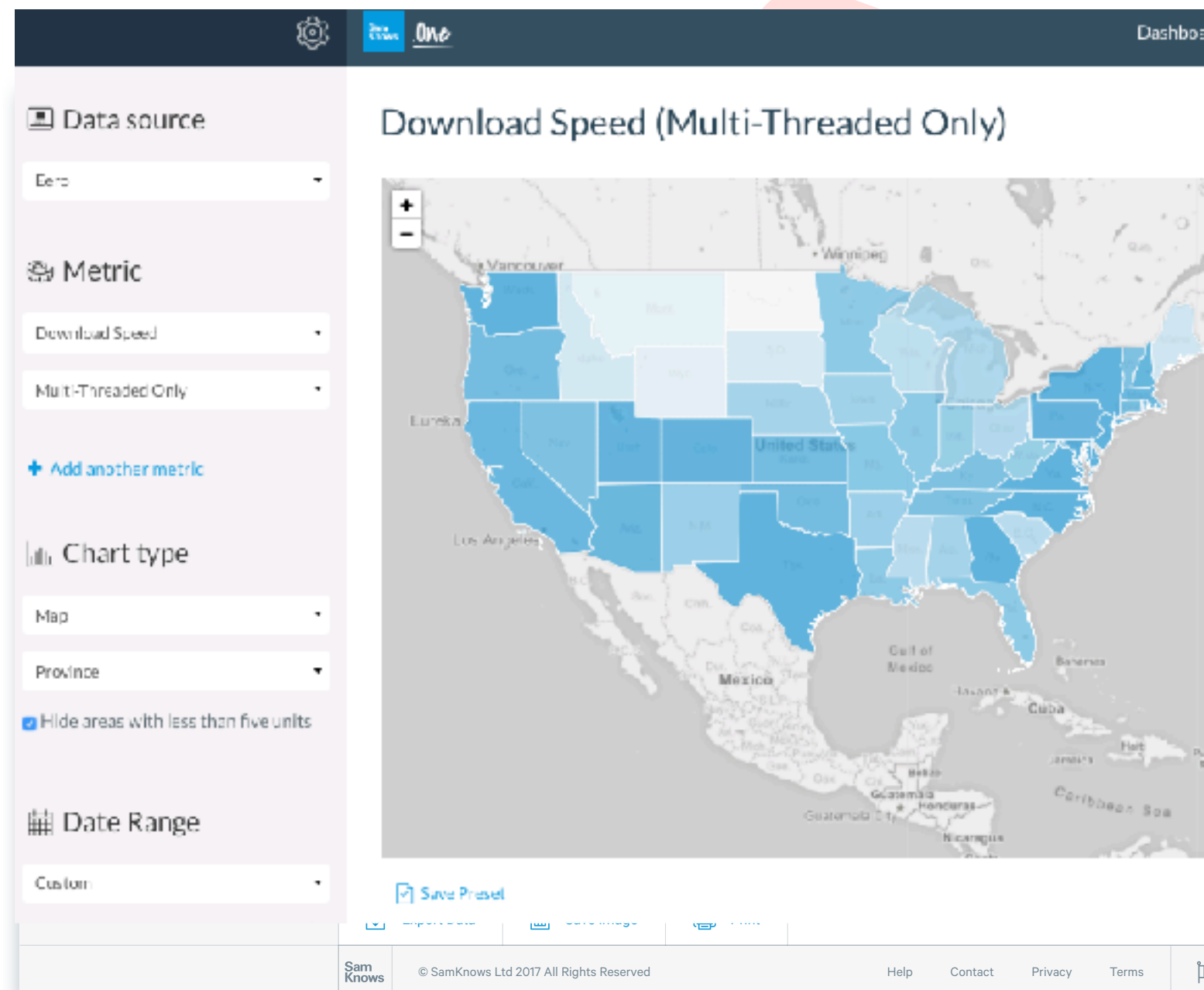
New mapping tools

# Project re-branding



# Over 100,000 active probes

- ✓ AT&T, Brighthouse, CableONE, CenturyLink, Charter, Cincinnati Bell, Comcast, Cox, EarthLink, EnTouch, Frontier, Hargray Communications, Hawaiian Telcom, Hughes, Mediacom, Online, Optimum, PenTeleData, RCN, Skyline, T-mobile USA, Tarr, Time Warner Cable, Verizon, Verizon Business, Verizon Wireless, WideOpenWest (WOW), Wildblue/ViaSat, Windstream

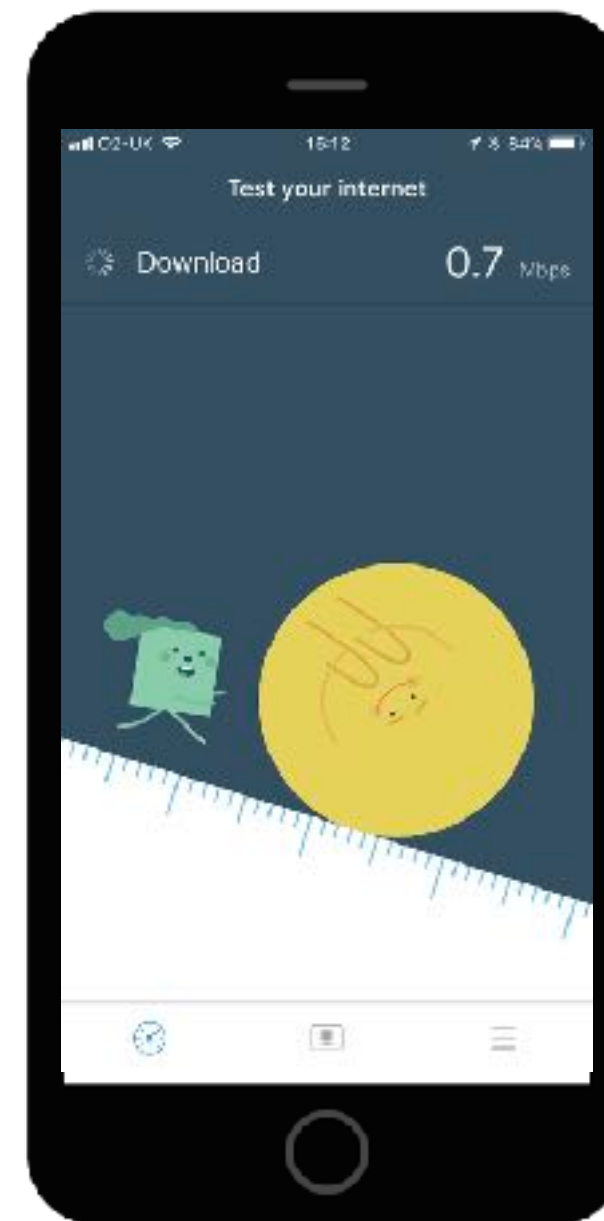




# Home Wi-Fi and data usage



- ✓ Measures mobile and Wi-Fi performance from the handset
- ✓ Key metrics: download speed, upload speed, latency, packet loss, jitter, web browsing performance, and YouTube
- ✓ Configured to run tests to pre-defined measurement schedule (only available on Android)
- ✓ Allows the user to configure a data cap for the mobile and Wi-Fi measurements
- ✓ A real-time continuous measurement
- ✓ Granular visibility of all historical results
- ✓ Environmental capture



Current tests and metrics

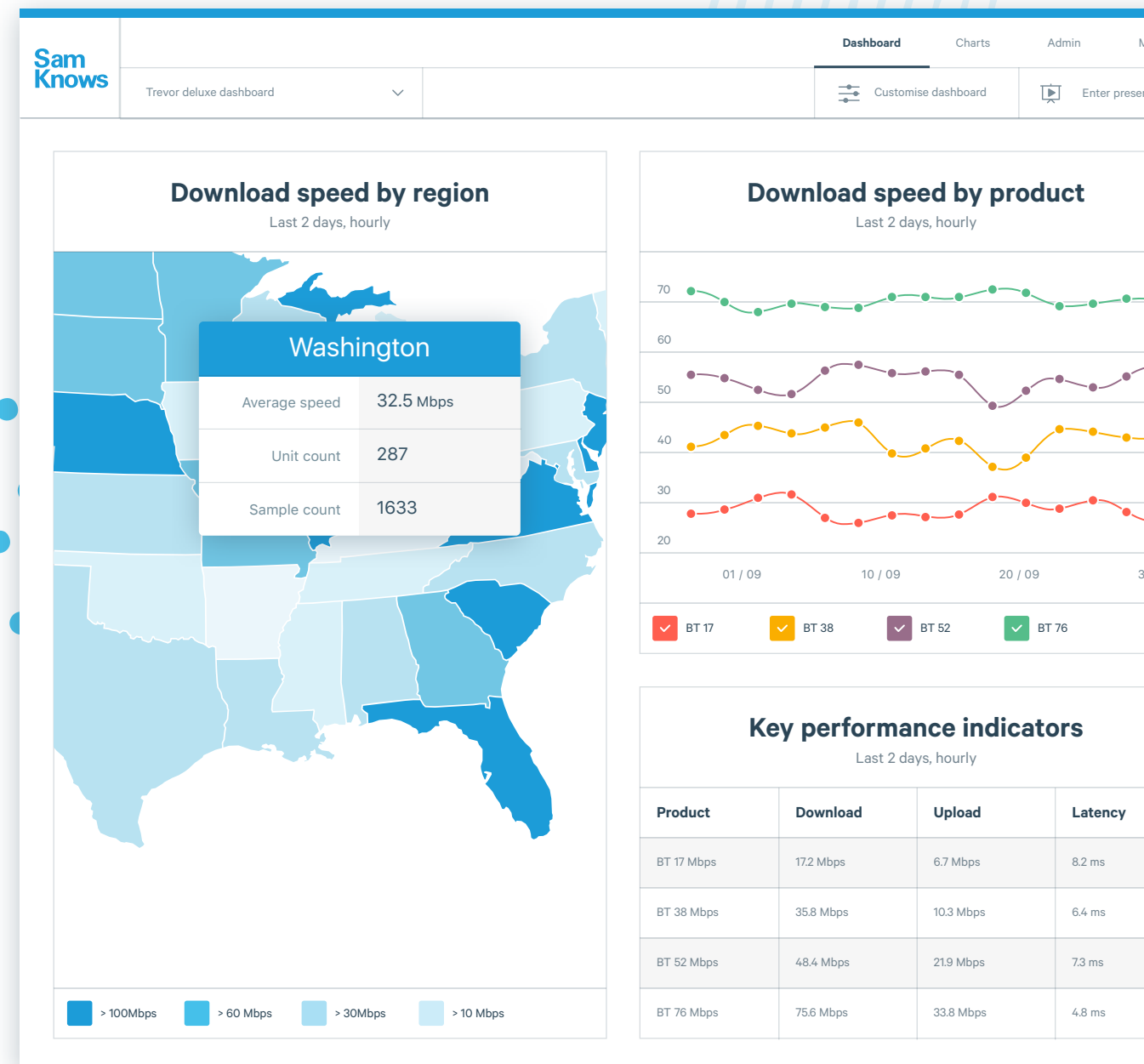
Region	County/sub-region Postcode Geography Line length	Environmental information (Wi-Fi)	Associated SSID Link rate Encryption mode Channel Frequency (2.4Ghz vs 5Ghz) HT Mode RSSI Nearby APs Wi-Fi Standard	Network	LAN WiFi Cellular Fixed	Upload test	Upload speed Upload test duration Upload bytes Upload speed at different intervals during the test (optional)	Packet loss	Packets sent Packets received Average packet loss on an hourly basis	DNS resolution test	DNS server being used Name being queries Response time Success and failure rate
Probe Information	Unit ID Whitebox model Whitebox capabilities (max speeds) Whitebox OS & version	Handset information (cellular/WiFi)	App version Handset manufacturer Handset model Handset OS type Handset OS version IMEI IMSI	Cross traffic Activity	Timestamp of cross-traffic breach event Cause of cross-traffic (wired or Wi-Fi) Volume of cross-traffic in bytes per second	Download test	Download speed Download test duration Downloaded bytes Download speed at different intervals during the test (optional)	Web browsing test	Website being tested Number of elements on the web page Page load time TCP connection establishment time DNS resolution time	Generic information available with all tests:	Unit ID that ran the test Timestamp in UTC Test server hostname Test server IP address
Environmental Information	Public IPv4 addressPublic IPv6 address LAN IPv4 address LAN IPv4 gateway Link speed and duplex CPE MAC address CPE brand CPE model (available in most cases via UPnP) CPE sync speed (available in most cases via UPnP) IP-geolocated ISP name IP-geolocated country, city & state	Environmental information (cellular)	SIM operator name SIM operator code Network operator name Network operator code Roaming status Active network type Network bearer (2G/3G/4G/LTE) Signal strength (RSSI) LAC Cell tower ID Other visible cell towers Physical longitude Physical latitude Location accuracy Location provider (GPS/network/WiFi)	YouTube test	Google Global Cache (GGC) content server hostname GGC IP addressVideo ID being measured Codec and container Bitrate being measured Bitrate that could be reliably streamed Stall count (available in non-BRS mode) Stall duration (available in non-BRS mode) TCP connection establishment time Video startup delay Video resolution	Latency test	Mean latency, on an hourly basis Maximum latency, on an hourly basis Minimum latency, on an hourly basis Standard deviation of hourly latency Packets sent Packets received	Netflix test	Netflix Open Connect Appliance (OCA) content server hostnameOCA IP address Bitrate being measured Bitrate that could be reliably streamed Stall count (available in non-BRS mode) Stall duration (available in non-BRS mode) TCP connection establishment time Video startup delay	VoIP test	Round-trip latency Upstream packet loss Downstream packet loss Upstream jitter Downstream jitter MoS Packet Loss Rate Packet Discard Rate Burst Density Gap Density Burst Duration Gap Duration Round Trip Delay End System Delay Signal Level Noise Level R-Factor MOS for listening quality MOS for conversation quality Current and maximum jitter delay

# New tests and metrics (new SK test dev team)

- ✓ Dropbox
- ✓ Google Drive
- ✓ Microsoft OneDrive
- ✓ Amazon Drive
- ✓ Amazon Prime Video
- ✓ Twitch streaming
- ✓ World of Warcraft
- ✓ Spotify
- ✓ Box
- ✓ Facebook CDN (Facebook caches)
- ✓ Steam

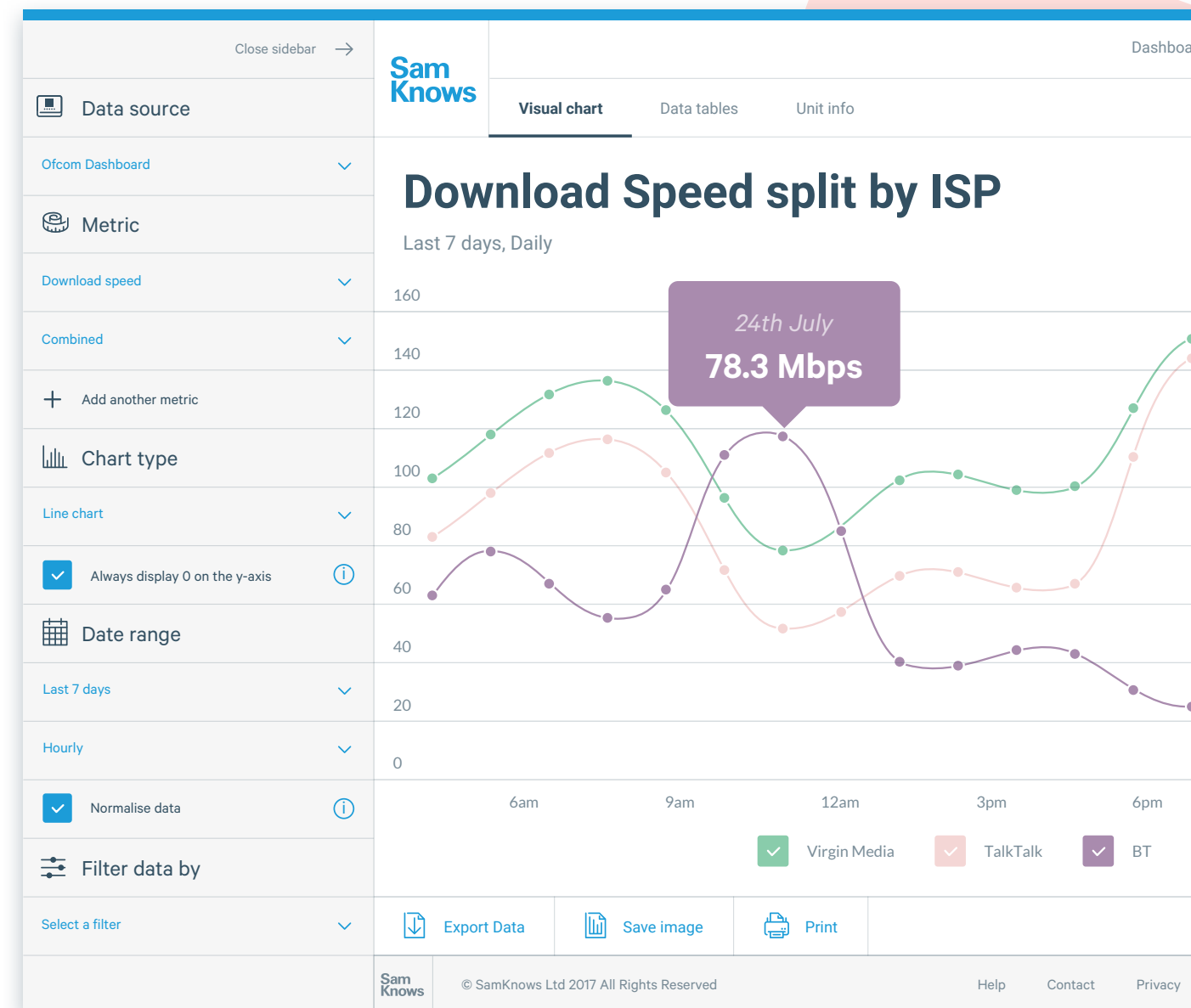
# New ISP dashboard

- ✓ View key metrics in a glance
- ✓ Configure your own dashboard, with reports you have created and saved
- ✓ Monitor performance across a whole network
- ✓ See in realtime issues that might affect customer experience
- ✓ See the MBA data being collected in realtime



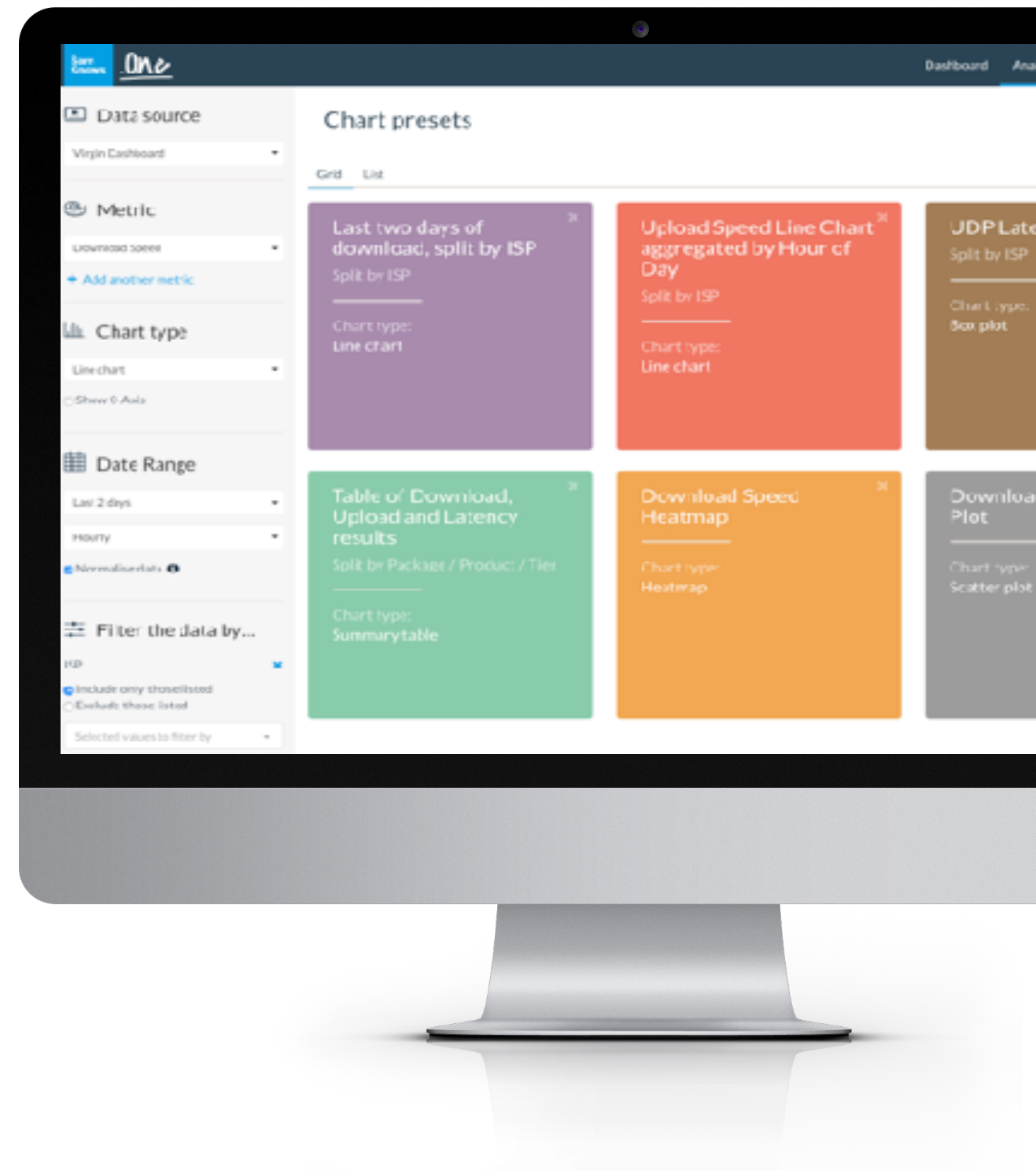
# New charts

- ✓ Advanced analytics and reporting
- ✓ Multiple charts including all those used in the MBA program
- ✓ View measurement agents, users and metadata
- ✓ View test schedules
- ✓ Map data in realtime
- ✓ An advanced permissions and access control system



# New reports

- ✓ Sam's favourites!
- ✓ View all of your saved reports in one place
- ✓ Quick and easy to use
- ✓ Click to load charts, save reports
- ✓ Import measurements from ISPs



# MBA 2018 Consumer Report



Charlotte Wilson  
Government team: North America  
[charlotte@samknows.com](mailto:charlotte@samknows.com)





END