



June 25, 2018

Henry Gola
202.719.7561
HGola@wileyrein.com

VIA ELECTRONIC FILING

Marlene H. Dortch
Federal Communications Commission
Office of the Secretary
445 12th Street, SW
Washington, DC 20554

Re: *Notice of Ex Parte Presentation*
GN Docket Nos. 17-183, 18-122

Dear Ms. Dortch:

Per FCC Rule 1.1206, this letter provides notice that on June 21, 2018, the representatives of PSSI Global Services, LLC ("PSSI"), Intelsat Corporation ("Intelsat"), and SES Americom, Inc. ("SES") listed in Attachment A (collectively, the "Parties") jointly participated in meetings with representatives from the Commission listed in Attachment B.

PSSI is a leading full-service provider of transmission solutions for television events worldwide. PSSI owns and operates an expansive fleet of more than 75 C- and Ku-band fully redundant satellite transportable uplink/production trucks based throughout the United States, Puerto Rico, and Mexico. PSSI specializes in live event delivery to millions of viewers across the country of sports, entertainment, and pay-per-view services for customers like ESPN, CBS, FOX Sports, NASCAR, WWE, HBO, Showtime, Top Rank, the Oscars, Golf Channel, and more. PSSI employs more than 125 people throughout the United States and invests millions of dollars annually in C-Band technology and services.

PSSI explained that the needs of these customers constantly change, and the Commission's current full-band, full-arc licensing regime is critical in that it allows PSSI to react dynamically to changing operational conditions and last-minute requests. Both the satellites and frequencies PSSI uses often are determined close in time to the individual broadcast events in question. Moreover, given that PSSI's licensed antennas have no fixed location because they are required to move from one event location to another, co-frequency sharing with terrestrial mobile is simply not a viable option. Only the market-based solution set forth by Intelsat, SES, and Intel adequately protects PSSI's C-band business and the must-see programming the company delivers via satellite throughout the U.S. for its customers.

PSSI further explained that satellite is the most reliable, flexible and effective tool for media distribution, and emphasized that C-band is, and always has been,



Marlene H. Dortch

June 25, 2018

Page 2

essential to its business for the transmission of video, audio, and data. In fact, PSSI recently converted eight trucks from Ku-band to C-band due to customer demand for the bandwidth characteristics and unmatched reliability of C-band. Notably, PSSI's customers will not rely solely on Ku-band for event coverage in areas subject to environmental conditions such as frequent rain, or for events of notable size and importance, such as major professional and college sports, award shows, pay-per-view events, entertainment shows, and the like. Additionally, C-band's ability to deliver 10-, 14-, and 28-channel multiplexed services allows PSSI customers like ESPN, NASCAR, and FOX to route all remote event sources to their home studios (and back) and complete event production there in real-time, enhancing the viewer's experience and the efficiency of these broadcast companies' operations. These large multipath multiplexed transmission services are not possible in Ku-band.

The commercial value of the events transmitted by PSSI for its customers can easily exceed \$100 million per event. Extrapolating this value over the thousands of events transmitted by PSSI and its competitors each year makes clear the significant financial impact these services have on the U.S. economy.

Finally, the PSSI representatives distributed the attached presentation to the Commission representatives.

Please contact the undersigned with any questions regarding this letter.

Respectfully submitted,

A handwritten signature in black ink, appearing to read "H. Gola".

Henry Gola
Wiley Rein LLP
Counsel to Intelsat Corporation

Attachment



Marlene H. Dortch

June 25, 2018

Page 3

ATTACHMENT A

PSSI Global Services, LLC:

Robert C. Lamb, CEO/Manager

Brian Nelles, Senior Vice President/Member

Peter Engel, Wells Wentworth, outside consultant to PSSI

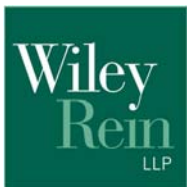
Intelsat Corporation:

Susan Crandall, Associate General Counsel

Henry Gola, Wiley Rein LLP, outside counsel to Intelsat

SES Americom, Inc.:

Petra Vorwig, Senior Legal & Regulatory Counsel



Marlene H. Dortch

June 25, 2018

Page 4

ATTACHMENT B

Kerry Murray

Michael Ha

Jose Albuquerque

Christopher Bair

Jennifer Gilsenan

Kathryn Medley

Ariel Diamond

Thomas Sullivan

Paul Blais

Diane Garfield

Robert Nelson

Tom Gehring (via phone)

Paul Powell (via phone)

Rebecca Schwartz (via phone)



PSSI²

Global Services, LLC

PSSI² Strategic
Television

PSSI² International
Teleport

PSSI² NEWS GROUP

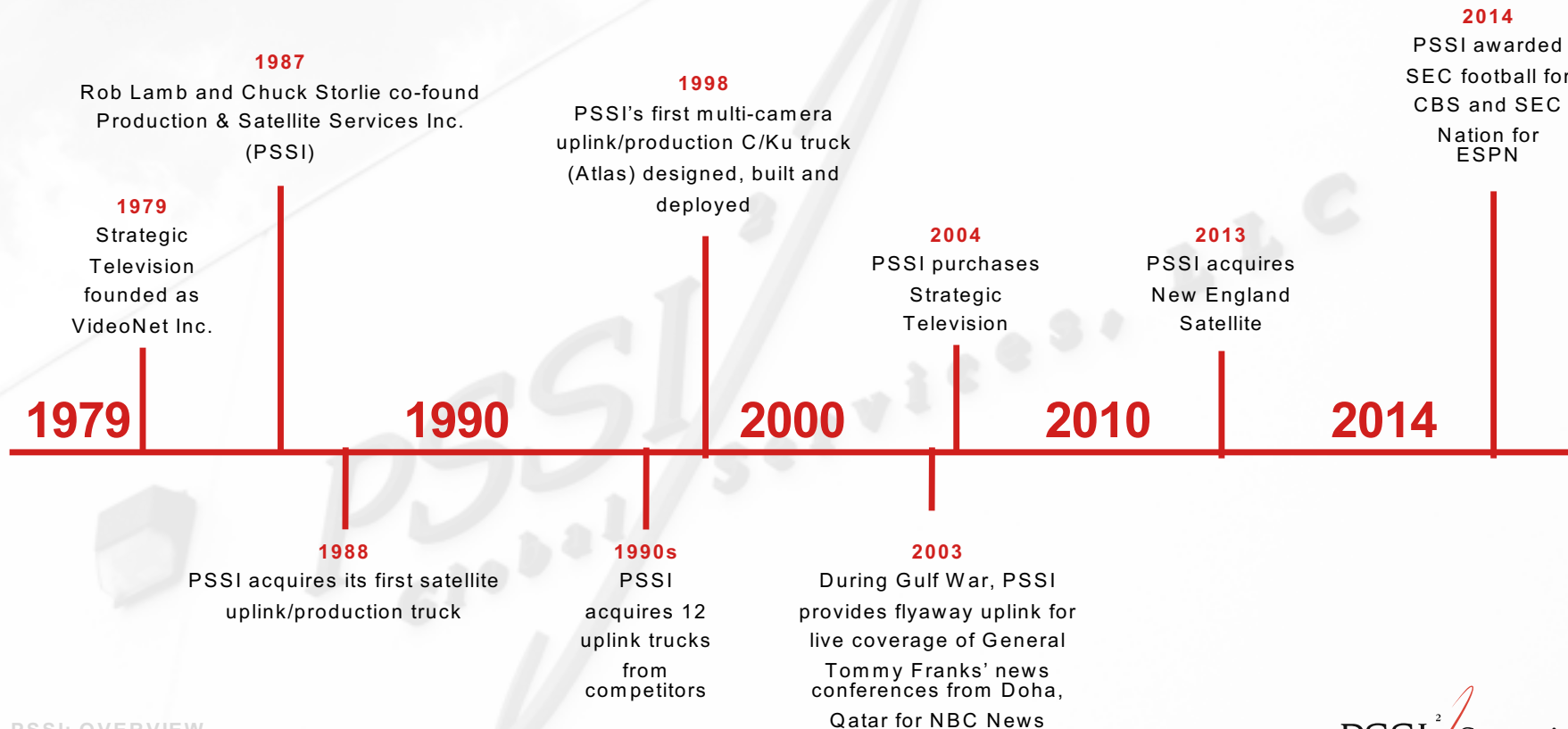
PSSI² IPX

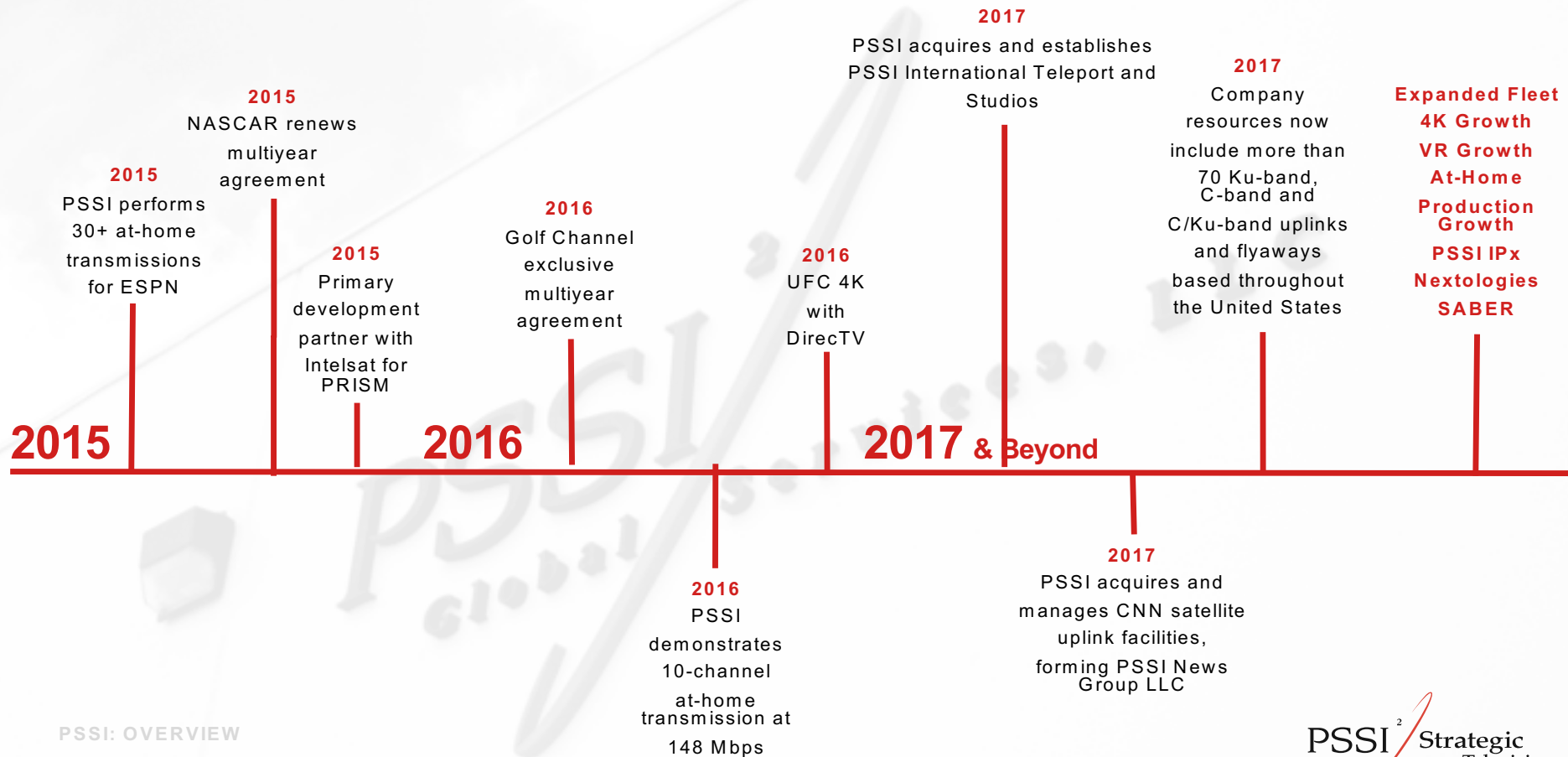
PSSI² SABER

June 2018

LIVE TELEVISION SINCE 1979.

- More than 35 years of experience in the industry
- Dedicated, experienced leaders
- More than 60 Broadcast Engineers and many RFI-EUI certified
- More than 20 insightful, knowledgeable and experienced project managers
- Responsive, committed support team for our engineers





CORPORATE LEADERSHIP



ROBERT C. LAMB

CEO, PSSI Global Services LLC



MATT BRIDGES

President, Strategic Television



BRIAN NELLES

*Senior Vice President,
PSSI Global Services LLC*

OPERATIONAL LEADERSHIP

Clint Bergeson

General Manager

Jason Land

Vice President, Strategic Television

Tracy Michaels

Director, Project Engineering

Dan Patin

Manager, Broadcast Production Services

Rick Ball

Director of Broadcast Services

Clayton Packard

*Vice President of Sales and Business Development,
PSSI Global Services LLC*

Eric Hall

Senior Project Manager

AJ Miceli

Vice President, Satcom Division

Bill Sciolla

Vice President, PIT



A TRUSTED, LEADING PROVIDER OF GLOBAL TRANSMISSION SERVICES

PSSI PROVIDES SERVICES FOR ALL MAJOR NETWORKS

ESPN



CNN

HBO

FOX



CBS



AND OTHER CUSTOMERS



THE NATION'S LARGEST FLEET OF TRUCKS 24 HOURS / 365 DAYS

More than 70 trucks and flyaway satellite systems stationed nationwide — ready on any day, at any time.

- Dual-path Ku-band and C-band
- IFB/PL communications
- C/Ku hybrids
- Multi-dish uplink systems
- Multi-camera switching capabilities
- IP data via satellite
- 4K transmissions



SERVICES AND EQUIPMENT

PSSI² Strategic
Television



PSSI International Teleport (PIT) is one of the world's largest privately owned teleports. Offering direct-to-home services, satellite transmissions, fiber and IP connectivity, disaster recovery, co-location and beyond, PIT supports live broadcasts 24 hours a day, 365 days a year, anywhere around the globe.





PSSI Global Services owns and manages PSSI News Group, which employs all the engineering staff and owns all the satellite uplink trucks that provide all U.S. domestic CNN satellite transmission services.



SPECIAL EVENTS SPECIALIZED SYSTEMS

- Flyaway satellite uplink systems
- Transportable downlink antenna systems
- HD encoding and encryption packages
- Satellite transponder, teleport and fiber connectivity facilities
- skIP transportable broadband internet and voice system
- Video production
- Webcasting
- Government services
- Event management
- PSSI IPx
- Exede, Cradlepoint and iDirect communications services



SERVICES AND EQUIPMENT

PSSI² Strategic
Television

PSSI GLOBAL SERVICES

FCC LICENSES

Vehicle ID	FCC#	Renewal
1.2 Flyaway BLT	E120037	04/27/27
Alabama	E930270	07/02/18
Arizona	E970059	01/24/22
Atlas C-Band	E980213	07/24/23
C 12	E980321	09/18/23
C 14	E920096	01/17/23
C 15	E060417	12/28/21
C 21	E040041	06/22/19
C 23	E080196	12/04/23
C 24	E080053	04/14/23
C 27 2.4	E100013	03/23/25
C 27 5.5	E100014	03/23/25
C 29	E880596	12/07/23
C 31	E130087	07/01/28
C 36	E150053	07/16/30
C 41	E090175	11/16/24
C 42	E110081	06/13/26
C 43	E980214	07/24/23
C 45	E140037	05/07/29

Vehicle ID	FCC#	Renewal
C 47	E070185	10/15/22
C49-Metro	E980388	11/18/23
C-Band 5.5 #1	E110057	05/27/26
C-Band 5.5 #2	E110058	05/27/26
CK 25 C-Band	E080052	04/14/23
CK 25 KuBand	E980219	11/18/23
CK 30 C Band	E110179	01/18/27
CK 30 Ku Band	E110176	01/09/27
CK 32 C Band	E130126	09/18/28
CK 35 C Band	E130099	08/19/28
CK 35 Ku Band	E130100	08/26/28
CK 48 Ku Band	E130089	05/14/28
CK 48 C Band	E130075	03/12/30
Columbia	E880612	12/07/23
DC 9	E960051	02/23/21
Denver/Open	E900412	08/24/25
Fly 1 C-Band	E010137	10/25/26
Fly 1 Ku-Band	E010138	07/18/26
Frontline	E940469	1/04/19

Vehicle ID	FCC#	Renewal
Junior	E920039	12/13/26
K 16	E000624	11/14/25
K 17	E880735	07/07/23
K 18	E060366	11/06/21
K 19	E000188	06/16/25
K 20	E980218	11/18/23
K 22	E900888	10/26/25
K 26	E010126	07/03/26
K 33	E000353	09/07/25
K 34	E030206	11/12/18
K 38	E140015	04/01/29
K 40	E150007	03/12/30
K 44	E140016	04/02/29
Midwest	E880803	09/25/23
NES Flyaway	E040054	03/18/19
Production Bus	E150060	06/05/30
Starlight	E881211	03/25/24
Wolf Coach	E900085	03/09/25



PSSI INTERNATIONAL TELEPORT

FCC LICENSES

Antenna ID	FCC#	Renewal
7	E890945	11/03/24
8	KA283	06/20/26
9	E910067	12/28/25
10	E900561	09/21/25
22	E890954	12/01/24
24	E900560	09/21/25
26	E910006	12/14/25
27	E871627	05/15/22
28	E060256	08/08/21
1, 2, 13	E880053	12/04/22
22A	E890955	12/01/24
22B	E890956	12/01/24
22C	E890957	12/01/24
31, 32, 41, 42	E070095	07/11/22
38, 39	E080014	03/18/23
5, 11, 21	E890933	10/06/24



PSSI NEWS GROUP

FCC LICENSES

Vehicle ID	FCC#	Renewal
NT-1	E170050	03/02/32
NT-2	E170049	03/28/32
NT-3	E170014	03/21/32
NT-4	E170015	03/21/32
NT-5	E170016	03/21/32
NT-6	E170017	03/21/32
NT-7	E170018	03/21/32
NT-8	E170019	03/21/32
NT-9	E170020	03/21/32
NS-11	E170007	03/21/32
NS-12	E170008	03/21/32
NS-13	E170009	03/21/32
NS-14	E170010	03/21/32
NS-15	E170011	03/21/32
NS-16	E170012	03/21/32
NS-17	E170013	03/21/32
NT-21	E170021	03/21/32
NT-22	E170022	03/21/32
NT-23	E170023	03/02/32

Vehicle ID	FCC#	Renewal
NT-24	E170024	03/28/32
NT-25	E170025	03/28/32
NT-26	E170026	03/02/32
NT-27	E170029	03/02/32
NT-28	E170027	03/02/32
NT-29	E170028	03/28/32
NT-30	E170030	03/28/32
NT-31	E170031	04/03/32
NT-32	E170033	03/02/32
NT-33	E170032	03/02/32
NT-34	E170034	03/02/32
NT-35	E170035	03/28/32
NT-36	E170036	03/28/32
NT-37	E170037	03/02/32
NT-38	E170107	06/13/32
NF-1	E170199	01/10/33
NF-2	E170199	01/10/33
NF 3	E170200	01/10/33



OUR C-BAND FLEET



ATLAS

Physical:

2009 Peterbilt Chassis

Weight: 25,900 lbs.

Length: 31'

Width: 8'

Height: 13' 2" (Antenna Stowed)



RF Equipment:

RSI 2.4 Meter C-Antenna

2-Port C-Band Feed

(2) ETM-400w C/

(2) LNR UC14M-D5 Freq. Converters

(2) LNR UC6-D5 Freq. Converters

Tektronix 1705A Spectrum Monitor

Production Equipment

FOR-A HVS-300HS HD/SD Switcher

(13) Evertz 7707DA7-HD/SD DAs

(9) Evertz 7700ADA7-EO Analog DAs

Blackmagic 40x40 HD/SD Router

(4) Blackmagic Router Control Panels

(2) AJA FS1 Video/Audio Converters

(2) Evertz 7736CD2 Analog to SD Converters

(4) Blackmagic HD/SD to Analog Converters

(2) AJA HD10DA Portable HD/SD to Analog Converters

Evertz 5600MSC Master sync Clock w/GPS

(5) TV Logic LVM-172W Multiformat LCD Monitors

(3) TV Logic PRM-902A Multiformat LCD Monitors

(4) TV Logic PRM483A Multiformat LCD Monitors

(2) TV Logic PRM-434A HD/SD LCD Monitors

Allen & Heath GL2400-424 Audio Mixer

(16) Evertz 7700DA-AES Digital Audio DAs

(9) Leitch AMD-880 Mono Analog Audio DAs

(3) Leitch ASD 880 Stereo Analog Audio DAs

Evertz 7720-ADC-A4 Analog to AES Converter

(2) Rane AD22D Analog Audio Delays

JBL M712 Dual Compressor/ Limiter

(2) Wohler AMP-2 EBMDA Audio Monitors

(2) Wohler AMP2-SBMDA Audio Monitors

Digital Encoders/ Decoders:

HDTV Encoders

HDTV Decoders

SDTV Encoders

SDTV Decoders

Digital Encoder/Decoders

(2) RTS MCE325 4-Channel PL Stations

(3) RTS WM300 PL Stations

RTS RM300-2 PL Stations

RTS CM-300 PL Stations

RTS SAP612 Source Assign Panel

(8) RTS BP325 Intercom Beltpacks

(8) Beyer Dynamic Intercom Headsets

(8) RTS PH-BR5 Dynamic Headsets

(2) RTS 4010 4Channel IFB Controller

RTS 4001 IFB Interrupt Station

RTS 4002 Interrupt Station

(4) RTS IFB325 Talent IFB Beltpacks

(4) Gentec Hybrid Telco Couplers

(2) Telos Link Intercom Telco Interfaces

(3) Cellular Phones

Gentec Microtel IFB Interface

(2) Telos Link Intercom Telco Interfaces

(3) Motorola Cellular Phones

FAX Machine

Generator:

Kohler 20 kW Diesel Generator

Baffled for quiet operation

36 Hour Fuel Capacity

Power Requirements:

208-240 Volt, 100 Amp, Single Phase

150 Feet Shore Power Cable

Cam-lock ends & pigtails

Operational Features:

C-Band Transmit Capable

Encryption Available (RAS, BISS1, BISS2, PGCA)

RF Equipment:

Comtech 5.5 Meter Antenna
 3-Port Feed
 (2) ETM 750w C-Band TWTAs
 (2) LNR UC6M-D5 Freq. Converters
 (2) LNR LVM-70 Modulators
 Standard MT650 Analog Receivers
 Tektronix 1705A Spectrum Monitor

Production Equipment:

(4) Miranda HAD-1832 Re-clocking DAs
 (4) Miranda VEA-1002 EQ DAs
 (6) Miranda DDA-1112 AES DAs
 (3) Miranda ADA-1023 Stereo DAs
 (2) 17" Marshall HD/SD LCD Display
 Evertz VIP8-HSN Multimage Display
 Videotek VTM-4100E Test Instrument
 Wohler AMP1-SB-MDA Audio Monitor
 Wohler AMP2-EB-MDA Audio Monitor
 Pixelmetrix Transport Stream Analyzer

Digital Encoders/ Decoders:

HDTV Encoders
 HDTV Decoders
 SDTV Encoders
 SDTV Decoders

Generator:

20 kW Generator
 80 Hour Fuel Capacity

Power Requirements:

208-240 Volt, 100 Amp, Single Phase
 200 Feet Shore Power Cable
 Cam-lock ends & pigtails

Communication Equipment:

RTS MCE325 2-Channel PL Stations
 (2) RTS BP325 Intercom Bellpacks
 (2) Beyer dynamic Intercom Headsets
 (2) RTS IFB325 Bellpacks
 Gentner Hybrid Telco Coupler
 Telos Link Intercom Interface
 Telular Cellular Terminal
 3G Aircard WiFi Router
 DSS Receiver

Operational Features:

Fully Redundant RF Electronics
 Encryption Available (RAS, BISSL, BISSE, PGCA)

Physical:

2009 Peterbilt Chassis
 Weight: 25,950lbs.
 Length: 33'9"
 Width: 8'
 Height: 12'0" (Antenna Stowed)



RF Equipment:

Corntech 5.5 Meter Offsat Antenna
 3 Port Feed
 (2) MCL 750w C-Band TWTAs
 (2) LNR UC6M-D5 Freq. Converters
 (2) Scientific Atlanta 7550 Modulators
 (2) Standard Agile Omni Analog Receivers
 Tektronix 1705A Spectrum Monitor

Production Equipment:

(4) Miranda HDA-1832 Re-clocking DAs
 (2) Miranda SDA-1112 Re-clocking DAs
 (4) Miranda VEA-1002 EQ DAs
 (6) Miranda DDA-1112 AES DAs
 (6) Leitch AMD-880 Mono DAs
 17" Marshall HD/SD LCD Display
 (4) 7" Marshall HD/SD LCD Displays
 (2) Videotek Stereo Audio Monitors, AMP-210
 Videotek VTM-450E Test Instrument
 Crown D75A Audio Amp

Digital Encoders/ Decoders:

HDTV Encoders
 HDTV Decoders
 SDTV Encoders
 SDTV Decoders

Generator:

40 kw Diesel Generator
 40 Hour Fuel Capacity

Power Requirements:

208 150 Amp, Three Phase Delta or Y
 190 Feet Shore Power Cable
 Cam-lock ends & pigtail

Communication Equipment:

RTS RM5300 User Station
 Telular Cellular Terminal
 DSS Receiver

Operational Features:

Fully Redundant RF Electronics
 3-Port Feed Receive Either Polarity
 Encryption Available (RAS, BrSS1, BrSSE, PGCA)

Physical:

1990 Volvo FE Series Chassis
 Weight: 27,000lbs.
 Length: 48'
 Width: 8'
 Height: 10' (Antenna Stowed)



C15

Physical:

2005 Freightliner Chassis
Weight: 25,950lbs.
Length: 32'6"
Width: 8'6"
Height: 12'2" (Antenna Stowed)



RF Equipment:

Comtech 5.5 Meter Offset Antenna
3-Port Feed
(2) MCL 750w C-Band TWTAs
(2) Miteq 9956 Frequency Converters
(1) Standard MT650 Rcvr
Tektronix 1705A Spectrum Monitor
(1) HD DSS Auto Deploy System

Digital Encoders/ Decoders:

(4) Ericsson Voyager II HD/SD MPEG-2/AVC Encoders
(4) Ericsson B200 HD/SD MPEG-2/AVC Decoders
Integrated QPSK/8PSK/DVB-S2 Modulators/
Demodulators
16 Channels of Audio

Power Requirements:

208-240 Volt, 100 Amp, Single Phase
200 Feet Shore Power Cable
Cam -lock ends & pigtails
Integrated PTO Driven Generator
80 Hour Fuel Capacity

Production Equipment:

(8) Evertz 7700 HD/SD Re-clocking DAs
(4) Evertz 7700 Analog EQ DAs
(8) Evertz 7700 AES Audio DAs
(3) Evertz 7700 Analog Audio DAs
(1) AJA 16x16 3G/HD/SD Router
(1) AJA F52 HD/SD Converter
(1) Evertz V1P12-HSN Multi-Image Display
(1) Evertz 7751 HD TSG
(1) Samsung 40" LED Monitor
(1) Samsung 32" LED Monitor
(1) 17" Marshall HD/SD LCD Display
(1) Marshall Dual 7" HD/SD LCD Display
(1) Harris VTM-4100-E w/Advanced Audio
(1) Wohler AMP1-E16V-MD Audio Monitor
(1) Wohler AMP2-EBMDA Audio Monitor
(2) Applied Research SLA-1 Audio Amps
(1) Whirlwind 4-Ch Stereo Audio Mixer
(1) Pixelmetrix Transport Stream Analyzer

Communication Equipment:

(1) RTS MCE325 2-Channel PL Station
(2) RTS BP325 Intercom Beltpacks
(2) RTS IFB325 Beltpacks
(2) Beyer Dynamic Intercom Headsets
(1) Telos One Telco Coupler
(1) Telos Link Intercom Interface
(2) Cellular Terminals

Operational Features:

Fully Redundant RF Electronics
3-Port Feed/Receive, Either Polarity
Encryption available (RAS, BISS1, BISSE, PGCA)

RF Equipment:

AWL 2.4 meter Antenna
 3 Port Feed
 (2) ETM 750w C-Band TWTAs
 (2) LNR VM2200 C-Band Freq. Converters
 DX DMR-657 Analog Receiver
 Tektronix 1705A Spectrum Monitor

Production Equipment:

Sony 32" LCD Monitors
 17" Marshall HD/SD LCD Display
 (2) 7" Marshall Composite LCD Display
 Videotek VTM-4100-E test Instrument
 Studio Tech 750 Audio Mixer
 Wohler AMP158-MDA Audio Monitor
 Wohler AMP2EB-MDA Audio Monitor
 Wohler AMP1A Audio Monitor
 Evertz VIP8-HSN Multimage Display
 (4) Evertz 7700DA-HD DA's
 (2) Evertz 7700DA-SD DA's
 (4) Evertz 7700ADA7-EQ DA's
 (8) Evertz 7700DA-AES DA's
 (4) Evertz 7700ADA-AUD DA's
 Evertz 7750TG SD TSG
 Evertz 7751TG2 HD TSG
 Pixelmatrix DVStation -mini

Digital Encoders/ Decoders:

HDTV Encoders
 HDTV Decoders
 SDTV Encoders
 SDTV Decoders

Generator:

20 Kw Generator
 80 Hour Fuel Capacity

Power Requirements:

208-240 Volt, 100 Amp, Single Phase
 200 Feet Shore Power Cable
 Cam-lock ends & pigtails

Communication Equipment:

RTS MCE325 2-Channel PL Stations
 (2) RTS BP325 Intercom Beltpacks
 (2) Beyer Dynamic Intercom Headsets
 StudioTech IFB Plus Station
 (2) Studio Tech 32 IFB Beltpacks
 Gentner Microtel IFB Interface
 Telos Link Intercom Interface
 (3) Telular Cellular Terminals
 3G Aircard WiFi Router
 DSS Receiver

Operational Features:

Fully Redundant RF Electronics
 Encryption availability (RAS, BISS1, BISS2, PGCA)

Physical:

2006 Peterbilt Chassis
 Weight: 25,950 lbs.
 Length: 29'
 Width: 8'
 Height: 12'6" (Antenna Stowed)



RF Equipment:

AWL 2.4 Meter Antenna C Band 3 port
 (2) MCL 750w C-Band TWTAs
 (2) Miteq 9953-6-1K Freq. Converters
 (2) Standard MT650 Analog Receivers
 Tektronix 1705A Spectrum Monitor
 HD DSS Auto Deploy System

Production Equipment:

(4) Evertz 7700 HD Re-clocking DAs
 (2) Evertz 7700 SD Re-clocking DAs
 (4) Evertz 7700 Analog EQ DAs
 (8) Evertz 7700 AES Audio DAs
 (4) Evertz 7700 Stereo Analog ADAs
 Evertz 7700 HD Test Signal Generator
 Evertz 7700 SD Test Signal Generator
 Evertz VIP8-HSN Multi-Image Display
 Sony 32" LCD Monitor
 17" Marshall HD/SD LCD Display
 (2) 7" Marshall Analog LCD Displays
 Videotek VTM-4100-E w/Advanced Audio
 Videotek Stereo Audio Monitors, AMP-210
 Wohler AMP2-EBMDA Audio Monitor
 Wohler AMP1-58MDA Audio Monitor
 Crown D75A Audio Amps
 Pixelmatrix Transport Stream Analyzer

Digital Encoders/ Decoders:

HDTV Encoders
 HDTV Decoders
 SDTV Encoders
 SDTV Decoders

Generator:

20 kw Generator
 80 Hour Fuel Capacity

Power Requirements:

208-240 Volt, 100 Amp, Single Phase
 230 Feet Shore Power Cable
 Cam -lock ends & pigtails

Communication Equipment:

RTS MCE325 2-Channel PL Stations
 (4) RTS BP325 Intercom Beltpacks
 (4) Beyer Dynamic Intercom Headsets
 Telex 4001/4010 IFB Station
 (4) RTS IFB325 Beltpacks
 (2) Gentner Hybrid Telco Coupler
 Gentner Microtel IFB Interface1 Telos Link
 Intercom Interface
 (3) Telular Cellular Terminals
 3G Aircard WiFi Router
 DSS Receiver

Operational Features:

Fully Redundant RF Electronics
 Encryption Available (RAS,BIS51,BIS5E, PGCA)

Physical:

2006 Freightliner Chassis
 Weight: 21,000lbs.
 Length: 28'
 Width: 8'
 Height: 11'9" (Antenna Stowed)



RF Equipment:

AVL 2.4 Meter Antenna
 4-Port Feed
 (2) MCL 750w C-Band TWTAs
 (2) LNR VM2200 Freq. Converters
 (2) Standard MT650 Analog Receiver
 Tektronix 1705A Spectrum Monitor

Production Equipment:

(4) Miranda HAD-1832 Re-clocking DAs
 (4) Miranda SDA-1112 Re-clocking DAs
 (4) Miranda VEA-1002 EO DAs
 (8) Miranda DDA-1112 AES DAs
 (7) Miranda ADA-1023 Stereo DAs
 (2) Miranda ADC1721 Analog to AES
 17" Marshall HD/SD LCD Display
 (10) 7" Marshall HD/SD LCD Displays
 Videotek VTM-450E Test Instrument
 (5) Videotek Stereo Audio Monitors, AMP-210
 (2) Crown D75A Audio Amps
 Pixelmatrix DVStation pod

Digital Encoders/ Decoders:

HDTV Encoders
 HDTV Decoders
 SDTV Encoders
 SDTV Decoders

Generator:

Onan 20 kW Diesel Generator
 6 Hour Fuel Capacity

Power Requirements:

208-240 Volt, 100 Amp, Single Phase
 200 Feet Shore Power Cable
 Cam-lock Ends & Pigtails

Communication Equipment:

RTS MCE325 2-Channel PL Stations
 (4) RTS BP325 Intercom Beltpacks
 (4) Beyer Dynamic Intercom Headsets
 Telex 4001/4010 IFB Station
 (4) RTS IFB325 Beltpacks
 (2) Gentner Hybrid Telco Coupler
 Gentner Microtel IFB Interface
 Telos Link Intercom Interface
 (3) Telular Cellular Terminals
 3G Aircard wifi Router
 DSS Receiver

Operational Features:

Dual Path Capabilities:
 - 3-Port Feed Assembly
 - Transmit on Same Polarity
 - Receive Either Polarity
 Fully Redundant RF Electronics
 Encryption Available (RAS, BIS51, BISSE, PGCA)

Physical:

2005 Kenworth Chassis
 Weight: 25,950 lbs.
 Length: 32' 6"
 Width: 8'6"
 Height: 12' 2" (Antenna Stowed)



RF Equipment:

COMTECH 5.5 Meter Antenna C-Band 4-port
AWL 2.4 Meter Antenna C-Band 4-port
(5) MCL 750w C-Band TWTAs
(4) Miteq 9900 Freq. Converters
(2) Tandberg SM6220 Modulators w/prekor
(5) Tandberg SM6220 Modulators
(2) Tektronix 1705A Spectrum Monitors
(2) DTT Remote Spectrum Monitors
(2) HD DSS Auto Deploy Systems

Production Equipment:

(16) Evertz 7700 HD/SD Re-clocking DAs
(5) Evertz 7700 Analog EQ DAs
(32) Evertz 7700 AES Audio DAs
(9) Evertz 7700 Dual Analog/AES converters
(2) Evertz 7700 Dual Comp/SDI converters
Evertz 128x128 Xenon Router
Evertz 5600MSC w/GPS
(2) Evertz Digital GPS Clock Displays
AJA FS1 HD/SD Converter
(4) Evertz VIP12-HSN Multi-Image Displays
(6) NEC 40" LCD Monitors
(3) Videotek VTM-4100-E w/Advanced Audio
(3) Wohler AMP2-EBMDA Audio Monitors
(2) Wohler AMP1-SBMDA Audio Monitors
Wohler AMP2-16D Audio Monitor
Pioneer Surround Sound System
Lance design Cobranet - AES RXs
Sencore 21x8 ASI multiplexer
Pixelmetrix Transport Stream Analyzer

Digital Encoders/ Decoders:

HDTV Encoders
HDTV Decoders
SDTV Encoders
SDTV Decoders

Power Requirements:

208-240 Volt, 150 Amp, Three Phase
200 Feet Shore Power Cable
Cam-lock ends & pigtails
40 kW Generator

Communication Equipment:

RTS MCE325 2-Channel PL Stations
(4) RTS BP325 Intercom Beltpacks
(4) Beyer Dynamic Intercom Headsets
Telex 4001/4010 IFB Station
(4) RTS IFB325 Beltpacks
(2) Gentner Hybrid Telco Coupler
Gentner Microtel IFB Interface
Telos Link Intercom Interface
(3) Telular Cellular Terminals
3G Aircard WiFi Router
DSS Receiver

Operational Features:

Fully Redundant RF Electronics
Evertz Fiber Optic Gear w/3 TAC12 & 10 ST
Connectors
Encryption Available (RAS, BiSS1, BiSSe, PGCA)

C27**Physical:**

2009 Peterbilt Chassis
Weight: 45,000 lbs
Length: 45'
Width: 8'
Height: 13'6" (Antenna Stowed)



C29 Physical:

2015 Peterbilt
33,000#
Length: 34 feet LOA
Width: 8'
Height: 12'1" (antenna stowed)
GVWR: 33,000 Pounds

RF Equipment:

Antenna: AVL 2.4 Meter
Feed: 3-port Linear C-band
RCI RC-3050 Antenna Controller
: (2) Advantech 400W SSPBs
(2) M&C 100 Amplifier Controllers
Modulators: Wired for 4
Avcom SNG-2500C Spectrum Monitor

Production Equipment:

16 Channel Multiviewer
DEKTEC stream analyzer
(2) AJA FS2 conversion/Frame sync
500' TAC-4 Fiber
(3) Sets Rattlers
KIPRO Record/playback Deck
8 CH Audio mixer
Black Magic 40 x 40 ASI Router
Black Magic 72 x 72 SDI Router
Leader LV7770 Multi Rasterizer
DirecTV DSS system

Monitoring Equipment:

(2) Boland 42" Color Monitors
(4) Boland 24" Color Monitors
(1) TV Logic 17" Engineering Monitor
(1) Dual 9" All Purpose Monitor
(1) Wohler 16 CH Audio monitor
(1) Wohler 8 CH Audio monitor
(1) AMP1-16V 16 CH A/V monitor

Digital Encoders/Decoders:

Encoders: Wired for 12
Decoders: Wired for 16
Multiplexers: Wired for 2

Power Requirements:

208/240v/100amp/SinglePhase
200' Shore Power Cable
Cam-Lock ends and pigtails

Communication Equipment:

Inkeeper 4 channel Hybrid
(2) MCE/MCS Intercom Stations
(3) PL Headsets: ?
(3) PL Beltpacks: ?
Model 4010 IFB Electronics
(2) IFB Beltpacks: ?
(2) IFB Earpieces: ?

Generator:

20KW Diesel Generator
80 Hour Fuel Capacity

Operational Features:

Fully redundant RF electronics
Encryption available: RAS, BISS 1, BISS E

C29

C31 Physical:

2004 Freightliner M2
33,000#
Length: 34 feet LOA
Width: 8'
Height: 12'1" (antenna stowed)
GVWR: 33,000 Pounds

RF Equipment:

Antenna: AVL 2.4 Meter
Feed: 3-port Linear C-band
RCI RC-3050 Antenna Controller
Amps: (2) Advantech 400W SSPBs
(2) M&C 100 Amplifier Controllers
Modulators: Wired for 4
Avcom SNG-2500C Spectrum Monitor

Production Equipment:

16 Channel Multiviewer
DEKTEC stream analyzer
(2) AJA FS2 conversion/Frame sync
500' TAC-4 Fiber
(3) Sets Rattlers
HiPro Record/playback Deck
8 CH Audio mixer
Black Magic 40 x 40 ASI Router
Black Magic 72 x 72 SDI Router
Leader LV7770 Multi Rasterizer
DirecTV DSS system

Monitoring Equipment:

(2) Boland 42" Color Monitors
(4) Boland 24" Color Monitors
(3) TV Logic 17" Engineering Monitor
(1) Dual 9" All Purpose Monitor
(1) Wohler 16 CH Audio monitor
(1) Wohler 8 CH Audio monitor
(1) AMPL-16V 16 CH A/V monitor

Digital Encoders/Decoders:

Encoders: Wired for 12
Decoders: Wired for 16
Multiplexers: Wired for 2

Power Requirements:

208/240v/100amp/SinglePhase
200' Shore Power Cable
Cam-Lock ends and pigtails

Communication Equipment:

Inkeeper 4 channel Hybrid
(2) MCE/MCS Intercom Stations
(3) PL Headsets: 7
(3) PL Beltpacks: 7
Model 4010 IFB Electronics
(2) IFB Beltpacks: 7
(2) IFB Earpieces: 7

Generator:

20KW Diesel Generator
80 Hour Fuel Capacity

Operational Features:

Fully redundant RF electronics
Encryption available: RAS, BISS 1, BISS E



RF Equipment:

- (1) Andrew 4.5 Meter Tri-fold Antenna, C-Band
- C-band 2-port feed, Ku-band 2-port feed
- (2) MCL 3.3 kW C-Band Klystrons
- (2) MCL 350w Ku-Band TWTAs
- (4) Miteq 9956 Frequency Converters
- (1) Tektronix 1705A Spectrum Monitor
- (1) HD DSS Auto Deploy System

Production Equipment:

- (10) Evertz 7700 HD/SD Re-clocking DAs
- (4) Evertz 7700 Analog EQ DAs
- (8) Evertz 7700 AES Audio DAs
- (4) Evertz 7700 Analog Audio DAs
- (1) AJA 16x16 3G/HD/SD Router
- (1) AJA FS2 HD/SD Converter
- (1) Burst HD/SD Test Gen w/16 Channel ID
- (1) Evertz V1P12-HSN Multi-Image Display
- (1) Sony 32" LED Monitor
- (1) TV Logic 17" Monitor
- (1) Marshall Dual 7" LCD Monitor
- (1) Harris VTM-4100-E w/Advanced Audio
- (1) Wohler AMP2-EBMDA Audio Monitor
- (1) Wohler AMP1-SBMDA Audio Monitor
- (1) Applied Research SLA-1 Audio Amp
- (1) Rane 8-Ch Audio Mixer
- (1) Pixelmetrix Transport Stream Analyzer

Digital Encoders/ Decoders:

- (4) Ericsson Voyager II HD/SD MPEG-2/AVC Encoders
- (4) Ericsson 8200 HD/SD MPEG-2/AVC Decoders
- Integrated GPSK/8PSK/DVB-S2 Modulators/Demodulators
- 16 Channels of Audio

Power Requirements:

- 208-240 Volt, 150 Amps, Three Phase
- 200 Feet Shore Power Cable
- Cam-lock Connections & Pigtails
- 30 kW Generator

Communication Equipment:

- (1) RTS MCE325 2-Channel PL Station

Control:

- (1) RTS 4010 IFB Controller
- (2) RTS BP325 Intercom Beltpacks
- (2) RTS IFB325 Beltpacks
- (2) Beyer Dynamic Intercom Headsets
- (2) Gentner Telco Couplers
- (1) Telos Link Intercom Interface
- (2) Cellular Terminals

Operational Features:

- Fully Redundant RF Electronics
- Encryption Available (RAS, BIS51, BISSE, PGCA)

Physical:

- 2000 Freightliner
- Weight: 32,000 lbs
- Length: 36'7"
- Width: 8'
- Height: 12'6" (Antenna Stowed)

C32

C36 Physical:

2004 Chevrolet
Length: 35'6"
Width: 8'
Height: 13'6" (antenna stowed)
Weight: 26,000 lbs.

RF Equipment:

Andrew 3.7 Meter Antenna
3-Port Feed
(2) Newtec 6100 Mods
(2) Advantech 400W SSPB HPAs

Production Equipment:

TV Logic Monitor
DEKTEC stream analyzer
AJA FS2 conversion/Frame sync
500' TAC-4 Fiber
(3) Sets Rattlers
KiPro Record/playback Deck
Ashley BCH Audio mixer
Wohler 16 CH Audio monitor
DirecTV DSS system

Digital Encoders/Decoders:

(2) Ericsson AVP2000 Encoder
(2) Ericsson RX8200 Decoders
(1) Tandberg RX1290 Decoder

Power Requirements:

208/240v/100amp/SinglePhase
200' Shore Power Cable
Cam-Lock ends and pigtails

Communication Equipment:

(2) Telos Links
(4) PL Beltpacks
(4) PL Headsets
(2) Telos 1 interface modem
(3) IFB Beltpacks
(3) IFB Earpieces

Generator:

20KW Diesel Generator
80 hour fuel capacity

Operational Features:

Fully redundant RF electronics
Encryption available: RAS, BISS 1, BISS E

C36

C41 Physical:

2005 International
Length: 38' 5"
Width: 8'
Height: 11'5" (antenna stowed)
Weight: 25,950 lbs

RF Equipment:

Comtech 5.5 Meter Antenna
3-Port Feed
(2) Newtec 6100 Mods
(2) Advantech 500W SSPA HPAs

Production Equipment:

MVP 16/VTM Monitor
DEKTEC stream analyzer
AJA FS2 conversion/frame sync
500' TAC-4 Fiber
(3) Sets Rattlers
KlPro Record/playback Deck
8 CH Audio mixer
Wohler 16 CH Audio monitor
DirecTV DSS system

Digital Encoders/Decoders:

(8) Adtec EN81 Encoders
(3) Ericsson RX8200 Decoders
(1) Adtec RD60 Decoder

Power Requirements:

208/240v/100amp/SinglePhase
200' Shore Power Cable
Cam-Lock ends and pigtails

Communication Equipment:

(2) Telos Links
(3) PL Beltpacks
(3) PL Headsets
(2) Telos 1 interface modem
(2) IFB Beltpacks
(2) IFB Earpieces
(2) Gentner IFB

Generator:

20KW Diesel Generator
80 Hour Fuel Capacity

Operational Features:

Fully redundant RF electronics
Encryption available: RAS, BISS 1, BISS E

C41

C42 Physical:

2006 International
Length: 35'
Width: 8'
Height: 127" (antenna stowed)
Weight: 25,950 lbs

RF Equipment:

Andrew 4.5 Meter Antenna
2-Port Feed
(2) Newtec 6100 Mods
(2) Advantech 600W SSPB HPAs
(2) Wavestream 600W SSPA HPAs

Production Equipment:

(1) TV Logic Monitors
(2) Decimator quad splitters
DEKTEC stream analyzer
500' TAC-4 Fiber
(3) Sets Rattlers
Videotek audio Monitor
Wohler 16 CH Audio monitor
DirecTV DSS system

Digital Encoders/Decoders:

(4) Ericsson Dual AVP 2000 Encoders
(2) Ericsson RX8200 Decoders
(2) Ericsson RX1290 Decoders

Power Requirements:

208 -240v/100amp/SinglePhase
200' Shore Power Cable
Cam-Lock ends and pigtails

Communication Equipment:

(2) Telos Links
(2) PL Beltpacks
(2) PL Headsets
(2) Studio Tech interface modem
(2) IFB Beltpacks
(2) IFB Earpieces

Generator:

20KW Diesel Generator
80 Hour Fuel Capacity

Operational Features:

Fully redundant RF electronics
Encryption available: RAS, BISS 1, BISS E



C43 Physical:

2006 International
 Length: 35'
 Width: 8'
 Height: 12.7' (antenna stowed)
 Weight: 25,950 lbs

RF Equipment:

Andrew 2.4 Meter Antenna
 2-Port Feed
 (2) Newtec 6100 Mods
 (2) Advantech 600W SSPB HPAs
 (2) Wavestream 600W SSPA HPAs

Production Equipment:

(1) TV Logic Monitors
 (2) Decimator quad splitters
 DEKTEC stream analyzer
 500' TAC-4 Fiber
 (3) Sets Rattlers
 Videotek audio Monitor
 Wohler 16 CH Audio monitor
 DirecTV DSS system

Digital Encoders/Decoders:

(4) Ericsson Dual AVP 2000 Encoders
 (2) Ericsson RX8200 Decoders
 (2) Ericsson RX1290 Decoders

Power Requirements:

208 -240v/100amp/SinglePhase
 200' Shore Power Cable
 Cam-Lock ends and pigtails

Communication Equipment:

(2) Telos Links
 (2) PL Beltpacks
 (2) PL Headsets
 (2) Studio Tech interface modem
 (2) IFB Beltpacks
 (2) IFB Earpieces

Generator:

20KW Diesel Generator
 80 Hour Fuel Capacity

Operational Features:

Fully redundant RF electronics
 Encryption available: RAS, BISS 1, BISS E



C45 Physical:

2009 Freightliner

Length: 30'

Width: 8'

Height: 13' (antenna stowed)

Weight: 32,950 lbs

RF Equipment:

Andrew 2.4 Meter Antenna

4-Port Feed

(2) Newtec 6100 Mods

(2) Advantech 250 Watt

Production Equipment:

WFM7777 Monitor

DEKTEC stream analyzer

Black Magic 16 in audio mixer

AJA FS2 conversion/frame sync

500' TAC-12 Fiber

(3) Sets Rattlers

Mackie 1604 Audio mixer

DirectTV DSS system

Digital Encoders/Decoders:

(2) Ericsson AVP 3000 Encoders

(2) SE 4000 SD

(2) RD260 Decoders/8200

(2) 1260 Decoders

Power Requirements:

208 -240v/100amp/SinglePhase

200' Shore Power Cable

Cam-Lock ends and pigtails

Communication Equipment:

(2) Tet14 CC

(3) PL Beltpacks

(3) PL Headsets

(3) IFB Beltpacks

(3) IFB Earpieces

Generator:

20KW Diesel Generator

80 Hour Fuel Capacity

Operational Features:

Fully redundant RF electronics

Encryption available: RAS, BISS 1, BISS E

C45

C47 Physical:

1999 Sterling
 Length: 36'
 Width: 8' (12' with stairs deployed)
 Height: 12', 6" (Antenna stowed)
 Weight: 25,950

RF Equipment:

ANTENNA: Comtech 5.5M Offset C-Band
 (2) MCL SSPA 400W
 (1) Tektronix 1705A Spectrum Monitor
 3-Port Feed
 (2) L-3 Communication upconverters

Production Equipment:

(16) HD DA's
 (2) AJA portable DA's
 (1) AJA FS2 Video/Audio Converter
 (3) 24" Boland LED Monitors
 (2) 4x6 Black Magic Monitors
 (1) 17" TV Logic Monitor
 (1) Wohler 8 CH Audio Monitor
 (1) Wohler 16 CH Audio Monitor
 (1) 40x40 Black Magic Smart Video Hub
 (1) Stream Analyzer
 (1) HD DSS
 (1) Multi-Rasterizer
 (1) AJA Ki-Pro Dual Slot Deck
 (2) 12-input/ 2-output decimators
 (1) DVD-RW Rack Unit
 (1) 6-CH Stereo Microphone Mixer

Digital Encoders/Decoders:

(3) Ericsson AVP 3000 (HD/SD Encoders)
 (1) Ericsson AVP 1000 (Remux unit)
 (3) Ericsson RX 8200 (HD/SD Decoder)
 (1) Ericsson RX 1290 (HD/SD Decoder)

Power Requirements:

220/240V Single Phase 100A
 200' Shore power cable
 Cam-Lock and pigtail compatible

Communication Equipment:

RTS 2-Channel Intercom
 (4) RTS Beltpacks
 (4) Beyer-Dynamics Headsets
 (1) Studio Tech 2-Channel IFB Plus
 (3) RTS Talent Beltpacks
 (2) Telos Intercom Telco Interface
 (4) Cell Phones

Generator:

Kohler 20kW Diesel
 36 Hour Fuel Capacity
 Baffled for quiet operation

Operational Features:

Fully Redundant RF Electronics
 Encryption available (RAS, BIS1, BISSE, PGCA)

C47

C49 Physical:

2005 Freightliner
Length: 38' 5"
Width: 8'
Height: 11'3" (antenna stowed)
Weight: 25,950 lbs

RF Equipment:

Comtech 5.5 Meter Antenna
3-Port Feed
(2) Newtec 6100 Mods
(2) Advantech 500W SSPA HPAs

Production Equipment:

MVP 16/VTM Monitor
DEKTEC stream analyzer
AJA FS2 conversion/Frame sync
500' TAC-4 Fiber
(3) Sets Rattlers
KiPro Record/playback Deck
8 CH Audio mixer
Wohler 16 CH Audio monitor
DirecTV DSS system

Digital Encoders/Decoders:

(8) Adtec EN81 Encoders
(3) Ericsson RX8200 Decoders
(1) Adtec RD60 Decoder

Power Requirements:

208/240v/100amp/SinglePhase
200' Shore Power Cable
Cam-Lock ends and pigtails

Communication Equipment:

(2) Telos Links
(3) PL Beltpacks
(3) PL Headsets
(2) Telos 1 interface modem
(2) IFB Beltpacks
(2) IFB Earpieces
(2) Gentner IFB

Generator:

20KW Diesel Generator
80 Hour Fuel Capacity

Operational Features:

Fully redundant RF electronics
Encryption available: RAS, BISS 1, BISS E

C49

COMING SOON



CK25



RF Equipment:

- (1) AVL 2.4 Meter C-band Antenna, 3 port
- (1) AVL 2.4 Meter Ku-band Antenna, 4 port
- (2) MCL 750w C-Band TWTA's
- (2) MCL 400w Ku-Band TWTA's
- (4) Mileq 9956 Freq. Converters
- (2) Tektronix 1705A Spectrum Monitors

Production Equipment:

- (8) Evertz 7700 HD/SD Re-clocking DAs
- (6) Evertz 7700 Analog EQ DAs
- (8) Evertz 7700 AES Audio DAs
- (4) Evertz 7700 Analog Audio DAs
- (2) Evertz 7700 Dual Analog/AES converters
- (2) Evertz 7700 Dual Comp/SDI converters
- (1) Evertz 7751 HD Test Generator
- (1) Evertz 7750 SD Test Generator
- (1) AJA FSI HD/SD Converter
- (1) Evertz Digital GPS Clock Display
- (2) Evertz VIP12-HSN Multi-Image Displays
- (1) nVision 32x32 HD/SD Router
- (4) Sony 40" LCD Monitors
- (1) Samsung 42" LCD Monitor
- (1) Harris VTM-4100-E w/Advanced Audio
- (1) Wohler AMP2-EBMDA Audio Monitor
- (1) Wohler AMP1-SBMDA Audio Monitor
- (1) Pixelmatrix Transport Stream Analyzer

Physical:

- 2008 Peterbilt Chassis
- Weight: 29,000 lbs
- Length: 34'
- Width: 8'
- Height: 13'6" (Antenna Stowed)

Digital Encoders/ Decoders:

- (4) Ericsson Voyager II HD/SD MPEG-2/AVC Encoders
- (4) Ericsson 8200 HD/SD MPEG-2/AVC Decoders
- Integrated QPSK/8PSK/DVB-S2 Modulators/ Demodulators
- 16 Channels of Audio

Power Requirements:

- 208-240 Volt, 150 Amp, Single Phase
- 200 Feet Shore Power Cable
- Cam-lock ends & pigtails
- 30 kW PTO Driven Generator

Communication Equipment:

- RTS MCE325 2-Channel PL Stations
- (4) RTS BP325 Intercom Beltpacks
- (4) Beyer Dynamic Intercom Headsets
- Telex 4001/4010 IFB Station
- (4) RTS IFB325 Beltpacks
- (2) Gentner Hybrid Telco Coupler
- Gentner Microtel IFB Interface
- Telos Link Intercom Interface
- (3) Telular Cellular Terminals
- 3G Aircard wifi Router
- DSS Receiver

Operational Features:

- Fully Redundant RF Electronics
- Encryption Available (RAS, BIS51, BISSE, PGCA)

PSSI – Strategic Television has designed and integrated a multi-dish, mobile teleport to support the production and transmission of WWE programming including their broadcasts of Monday Night Raw, Smackdown and their monthly Pay-Per-View offerings. The 43-foot trailer is equipped with C-band and Ku-band antennas capable of supporting transmissions on four discrete C-band and Ku-band transponders simultaneously. The unit's spacious interior has been equipped with state-of-the-art monitoring, distribution and transmission equipment along with the latest in HD encoding, decoding and multiplexing gear. It has also been designed for future growth with room for additional digital encoding, decoding and production gear.

Production Equipment

- (15) Evertz 7700 HD/SD Re-clocking DAs
- (4) Evertz 7700 Analog EQ DAs
- (16) Evertz 7700 AES Audio DAs
- (5) Evertz 7700 Analog Audio DAs
- (2) Evertz 7700 Dual Analog/AES Converters
- (1) Evertz 128x128 Xenon Router
- (1) Evertz 5600MSC w/GPS
- (2) Evertz Digital GPS Clock Displays
- (1) AJA FS2 HD/SD Converter
- (3) Evertz VIP12-HSN Multi-Image Displays
- (6) NEC 40" LCD Monitors
- (2) Harris VTM-4100-E w/Advanced Audio
- (3) Wohler AMP2-EBMDA Audio Monitors
- (1) Wohler AMP1-5BMDA Audio Monitors
- (1) Pioneer Surround Sound System
- (1) Sencore 12x8 ASI Multiplexer
- (1) Pixelmatrix Transport Stream Analyzer

Digital Encoder/Decoders

- (6) Ericsson Voyager II HD/SD MP2/MP4 Encoders
- (7) Ericsson RX1290 HD/SD MP2/MP4 Decoders

RF Equipment

- (1) ASC 4.6 Meter Tri-fold Antenna, C-Band, 4-port
- (1) AVL 2.4 Meter Antenna, Ku-Band, 4-port
- (2) MCL 750w C-Band TWTAs, Ready for Three
- (2) MCL 400w Ku-Band TWTAs, Ready for Three
- (6) Miteq 9900 Frequency Converters
- (5) Tandberg SM6220 Modulators w/Prekor
- (2) Tektronix 1705A Spectrum Monitors
- (1) DTI Remote Spectrum Monitor
- (2) HD DSS Auto Deploy Systems, 4 Rcvrs

Physical

- 2009 Peterbilt Tractor
- Weight: 45,000 lbs
- Length: 43' Trailer
- Width: 8'
- Height: 13'6" (Antenna Stowed)



CK30

PSSI Global Services LLC proudly introduces the newest addition to our expanding fleet of satellite transmission platforms: the CK35.

The 40-foot dual-dish truck features a large aperture 4.6m ASC 4-port C-band antenna, and a 1.8m AVL 3-port Ku-band antenna. Both systems are equipped with Advantech Wireless GaN SSPBs, three 400-watt C-band units and two 200-watt Ku-band units. Newtec M6100 and MDM6100 modulators and modems round out the RF chain.

CK35 Highlights:

- Dual-Dish Truck w/ a 4.6m ASC 4-Port C-Band Antenna & a 1.8m AVL 3-Port Ku-Band Antenna
- Hub-Mounted Advantech Wireless GaN SSPBs for both C-Band (400w) & Ku-Band (200w)
- Newtec M6100 & MDM6100 Modulators & Modems
- Truck is Full-1080p Capable w/ Distribution, Routing, Testing & Monitoring
- 64x64 3G/HD/SD/ASI Evertz Router w/ Magnum SS Control
- Evertz 7867VIPM 16x2 Multi-Image Displays (2)
- Evertz 7700DA7-3G DAs (16)
- Evertz 7700DA-AES DAs (8)

- Videotek VTM-4150 3G/HD/SD Test Monitor
- Boland 3G Monitors (5)
- Ericsson AVP-3000 Encoders w/ Ericsson RX8200 Decoders
- Sencore 12x4 ASI Multiplexer
- Snell VALIDB Lip-Sync Generator Reader
- Wohler AMP2-E16V-MD Audio Monitor
- Wohler AMP1-E16V-MD Audio Monitor
- Tracvision SK-SWM3 DirecTV Antenna w/ 2 Rcvrs

This truck was designed for all 3G/HD/SD formats, including all distribution, routing, testing and monitoring functions. Evertz distribution gear includes a 64x64 3G/HD/SD router, distribution DAs and 7867VIPM multi-image displays. The multi-image display units feed five Boland 3G monitors.

CK35 is wired for 12 encoders and decoders. Ericsson AVP-3000 encoders with dual-lead power supplies, along with Ericsson RX8200 IRDs, are utilized for encoding and decoding. A Sencore DMG-3000 multiplexer with 12 ASI inputs and eight discrete outputs is utilized for MCPC applications.

A Snell VALIDB lip-sync validation generator and reader is included to ensure proper video and audio lineup. Wohler 16-channel audio monitors are used to easily examine all 16 channels of audio transmitted and received simultaneously.

At the core of CK35 is a dual-power supply system. Primary and backup three-phase prime power inputs can be utilized for additional redundancy. This includes surplus tapping transformers, monitoring, extra power strips and, wherever possible, redundant power supplies in all critical equipment.



2014 Peterbilt
Weight: 42,000 lbs
Length: 39'9"
Width: 8'
Height: 13'6"
(Antenna Stowed)

CK35

CK48 Physical:

2000 Freightliner
Length 40'
Width: 8' (Stairs stowed)
Height: (antenna stowed) 13'
Weight: 45,000 lbs

RF Equipment:

KU Antenna 2.4 meter
C Antenna 5.5 meter
2 Advantech Amps C-Band
2 Advantech Amps KU Band
2 SNG-2500C Spectrum Monitors

Production Equipment:

Decimator Multi Image Display
HD DSS
6 Pair AJA Fiber FIDO
2 500' TAC6 Fiber
2 100' 10 Pair BNC
DECTEC Transport Stream Analyzer
Ward Beck AMS-82
16 Channel Wohler
Leader LV7770
20x20 Blackmagic RTR
AJA FS2
40" Monitor
TV LOGIC Multi Format Monitor

Digital Encoders/Decoders:

4 ERICSSON Encoders
2 ERICSSON Encoders w/MODS
2 Tandberg 1290 IRD
4 ERICSSON 8200 IRD
1 ERICSSON MUX

Power Requirements:

210/100amp Single Phase
200' Power Cable
Cam Lock / Pigtails

Communication Equipment:

RTS MCE325 user station
Innkeeper 4
4 Beltpacks
4 Headsets

Generator:

Whisper Watt Generator
_____hour fuel capacity

Operational Features:

Fully redundant RF electronics
Encryption available: RAS, BISS 1, BISS E

CK48

FRONTLINE

RF Equipment:

Vertex 2.4 Meter DMK Antenna
(4) Port Feed (Dual Path)
(2) Xicom 350w Ku-Band TWTAs
(2) Miteq 9956-6-1K Freq. Converters
DX 656 Satellite Receiver
DX IRD 657 VC II Rcvr/Decoder
Tektronix 1705 Spectrum Monitor

Production Equipment:

Evertz VIPB-H5N Multimage Display
(6) Evertz 7700DA7-HD HD/SD DAs
(3) Evertz 7700DA SD DAs
(6) Evertz 7700DA7-EQ Analog DAs
(2) AJA HA10DA Portable DAs
AJA F51 Video/Audio Converter
Sony 32" LED Monitor
TV Logic LVM-172W LCD Monitor
Allen & Heath WZ1442 Audio Mixer
(8) Evertz 7700DA-AES Digital Audio DAs
(3) Evertz 7700DA-AUD Dual Audio DAs
Advantech SSPB 400 watt (2)
Videotek VTM-4100 HD/SD Test Monitor
Pixelmetrix Transport Stream Analyzer
Evertz 7751TG2-HD Test Signal Generator
Evertz 7750TG SD Test Signal Generator

Digital Encoders/ Decoders:

HDTV Encoders
HDTV Decoders
SDTV Encoders
SDTV Decoders

Power Requirements:

208-240 Volt, 100 Amp, Single Phase
150 Feet Shore Power Cable
Cam-lock ends & pigtails

Communication Equipment:

RTS MCE325 2-Channel Intercom
(4) RTS BP325 Intercom Beltpacks
(4) Beyer Dynamic Intercom Headsets
RTS 401D 4-Channel IFB Controller
RTS 4001 IFB Interrupt Station
(3) RTS 4020 Talent IFB Beltpacks
(3) Gentner Hybrid Telco Couplers
Gentner Microtel IFB Interface
Telos Intercom Telco Interface
(3) Telular Cellular Phones

Generator:

Kohler 20 kW Diesel Generator
Baffled for quiet operation
36 Hour Fuel Capacity

Operational Features:

Fully Redundant RF Electronics
Encryption available (RAS, BISSE, PGCA)

Physical:

2009 Peterbilt Chassis
Weight: 25,950 lbs.
Width: 8'
Height: 12' 6" (antenna stowed)



NT24 Physical:

2005 Freightliner M2 Mercedes Benz Diesel
 Length: 29'4"
 Width: 8'6"
 Height: 13'
 Weight: 26,500 lbs actual laden
 Shore Power: 200-240 volt at 100 amps
 30' onboard shore power cable

Transmission: TX-GHD/SD

4 Ericsson Voyager II MPEG-2/4 SD/HD Encoders with DVB-S2 Mod.
 1 Tandberg E5740 MPEG-2 SD Enc.
 2 MCL 400W Ku-Band (13.75-14.50 GHz) Single Drawer TWT Amplifiers
 1 AVL 2.4 Meter Dual-skin Aluminum Ku-Band Motorized Vehicular Antenna
 4 Ericsson MPEG-2/4 SD/HD Decoders with DVB-S2 Demodulator
 1 Tandberg RX1290 MPEG-2/4 SD/HD Decoder with DVB-S2 Demodulator
 1 MotoSat HD-SLS DirecTV 5 LNB Antenna System
 1 DirecTV H21HDTV Receiver

Production:

1 Panasonic AV-HS41D HD Multi-Standard Live Video Switcher
 1 JVC 21" Verite G Series HD LCD 16:9 Broadcast Studio Monitor
 10 Marshall 2.5" LCD Rack Mount Panel with Composite Inputs
 3 Marshall Four x4" LCD Rack Mount Panels with Composite Inputs
 1 Marshall Dual 7.9" LCD HD Monitor panel
 1 Tektronix 7200 WFM
 1 Telecast Viper and one Josephs Tote system
 Various length copper AV and AC cables and reels

Communications:

6 Cellular Lines 2 AT&T, 3 Verizon
 7 VoIP Protocol Phone Lines (iDirect)
 1 Westinghouse 1000 MSAT Transceiver satellite Phone
 2 Studio Technologies IFB+ (4 Lines)
 2 Telos Line Unit for two discreet PL
 Clearcom MS-440 4 channel Intercom
 2 Behringer FBQ1502HD Ultragraph HD 15 Band Stereo Graphic EQ

Audio

1 Midas Venice 160 16 Channel Audio Mixing Console
 3 Studio Technologies M742 Audio Mixers
 2 Crown audio amplifiers
 4 JBL Control-1 monitor speakers
 4 Evertz 2x4 Analog Audio DA
 6 AVP 2x48 audio patch panels

Terminal Equipment: RX-4HD/SD and 1SD

Evertz CP-2116E-H Router Control Panel, Evertz Magnum Router SS control System
 Evertz EQT-3232-H+2PS 32x32 HD/SD Router
 Evertz QT-1616-AA+2PS 16x16 Analog Audio Router

Recording/Playback/Edit

2 Sonnet PDW-HD1500 XDCAM HD Recording Decks
 1 Panasonic AJ-HD1400 PJ DVCPRO HD® VTR
 1 Sony PMW100 XD Cam EX camcorder play/record
 1 JVC GY-HM150U compact camcorder play/record
 1 AJA iOHD Firewire 800 Analog/Digital Converter

NT24

A background image of a boxing match. A boxer in red gloves and yellow trunks is throwing a punch at a boxer in silver trunks. The scene is dimly lit with blue stage lights in the background.

BRINGING EVERYWHERE TO YOU

Over the past 35 years, PSSI Global Services' expert broadcast engineering and event management services have earned the trust of many major domestic and international broadcast, cable and corporate clients.



LOCATIONS

PSSI REGIONAL OFFICES

Las Vegas, NV

Corporate & Engineering HQ

Los Angeles, CA

Operations HQ

Orlando, FL

Operations HQ

Boston, MA

Operations HQ

Pittsburgh, PA

Teleport/Studio HQ

BASE LOCATIONS

Atlanta, GA

Birmingham, AL

Boston, MA

Charlotte, NC

Chicago, IL

Dallas, TX

Denver, CO

Houston, TX

Jacksonville, FL

Las Vegas, NV

Los Angeles, CA

New York, NY

Orlando, FL

Philadelphia, PA

Phoenix, AZ

Sacramento, CA

San Francisco, CA

Seattle, WA

Washington, D.C.

SPORTS

NFL League Games

NFL Playoffs and Super Bowl

Monday Night Football

NBA League Games

NBA Playoffs and Finals

NHL League Games

NHL Stanley Cup Playoffs

NCAA Football

NCAA Bowl Games

NCAA Men's Basketball

NCAA Women's Basketball

NCAA Tournaments

NCAA Hockey

NCAA Lacrosse

NCAA Volleyball

MLB League Games

MLB All-Star Game and Playoffs

NASCAR

HBO and Showtime PPV Boxing

UFC Mixed Martial Arts

WWE Wrestling

PGA Golf

World Cup Soccer

World Cup Skiing

America's Cup

Professional Tennis

IRONMAN Triathlon

New York City Marathon

AMGEN Tour of California

NETWORKS AND BROADCAST



ENTERTAINMENT

Academy Awards

Grammy Awards

Golden Globe Awards

People's Choice Awards

American Music Awards

SAG Awards

Primetime Emmy Awards

Daytime Emmy Awards

BAFTA Awards

BET Awards

Country Music Awards

Kids' Choice Awards

AFI Awards

MTV Music Awards

Latin Grammy Awards

Billboard Music Awards

Sundance Film Festival

Consumer Electronics Show

Macworld

Show West

NAPTE Conference

E3 Media Show

Live Concerts

North American International Auto Show

Fourth of July Concert

Women in Film

Critics' Choice Awards

BlizzCon

NETWORKS AND BROADCAST



TELEVISION

Good Morning America

CBS Early Show

Nightline

MacNeil Lehrer

CBS Evening News

ABC World News Tonight

NBC Nightly News

ESPN Sports Center

Entertainment Tonight

Extra

Access Hollywood

TV Guide

Oprah

The Tonight Show

David Letterman

American Idol

Dancing with the Stars

Real Time with Bill Maher

Jimmy Kimmel Live

America's Best Dance Crew



WORLDWIDE CLIENTS

ABC	EBU	Microsoft	Textron	Ford Motor Company
CBS	HS	Apple Computers	Millennium	Compuware Corporation
NBC	Nippon TV	Sun Microsystems	Nissan	GlaxoSmithKline
FOX	Televisa	Boeing	Activate	Mayo Clinic
CNN	TV Azteca	Tricon	Akamai	St. John's Hospital
CNBC	Sky TV & Broadband	McDonald's	Fannie Mae	
ESPN	Showtime	Harrah's Resorts	Cummins	
MTV	Hammond & Hammond Inc.	Cisco System, Inc.	Chevron	
HBO	Univision	Digital Island	Hewlett-Packard	
VH1	Weather Channel	Pitney Bowes	Seagate Technology	
NHK	Fox Sports Net	Prudential Financial	Advanced Micro Devices (AMD)	
BBC	Nickelodeon	Intel	Hughes Corporate Site	
QVC	TV Asahi	Lucent	Aerotech	
TNT	Telemundo	Motorola	Nestle USA	
TVG	E! TV	Teledyne Technologies		

UNIQUE SPECIAL EVENTS (Some Examples)

GULF WAR FROM QATAR

LIVE DRUG BUST SPECIAL

LIVE SOLAR ECLIPSE FROM WOLEAI, SOUTH PACIFIC

LIVE BBC MONTEREY BAY ROV TRANSMISSION FROM 2,000M

MOVIE PREMIERE “THE ROCK” LIVE FROM ALCATRAZ

ROAD RALLY FROM OAXACA, MEXICO

MACAU PPV SPECIALS

LIVE CRUISE MISSILE AND PREDATOR TESTING

HEAVEN SENT – LIVE SKYDIVE WITHOUT A CHUTE

APPLE LIVE FROM BEIJING

SPECIAL CONTRACTS



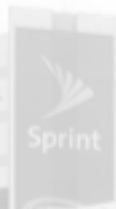
THE PSSI **ADVANTAGE**



WORLD-CLASS PEOPLE

Industry vets that have been a part of live television for more than 35 years

- 62** Engineers
- 21** Project managers
- 41** Support staff



WORLD-CLASS RELATIONSHIPS

Promoters, producers, networks and vendors

- Top Rank **25+ years**
- HBO **25+ years**
- NYC Marathon **25+ years**
- Showtime **25+ years**
- Microsoft **25+ years**
- Apple **25+ years**
- Chevron **25+ years**



WORLD-CLASS FLEET

The largest and most advanced fleet in the industry

- 4** C-Band / Ku-Band
- 1** C-Band Dual Dish
- 17** C-Band
- 55** Ku-Band

THE PSSI **ADVANTAGE**



WORLD-CLASS TRANSMISSIONS

Leading multipath transmission specialist

- Largest at-home transmission in broadcast history (NASCAR's Rolex 24)
- Two-way 10-path transmission accomplished in 1.09 seconds
- 30 paths routed out of a single mobile teleport
- 500 megabits of data transmitted out of a single antenna



WORLD-CLASS FACILITIES

PSSI International Teleport (PIT) and PIT Studio

- One of the world's largest privately held teleports
- 50 Ku- and C-band antennas
- Full-time broadcasting space on Galaxy 19
- State-of-the-art, full-service production studio

THE PSSI **ADVANTAGE**



WORLD-CLASS TECHNOLOGY

Leading the industry in live broadcast solutions

- In-house design, manufacturing and maintenance of all earth stations
- Custom encoding kits for every transmission challenge
- Equipment updated with the latest cutting-edge technology



WORLD-CLASS NEWS

PSSI News Group provides all U.S. domestic CNN satellite transmission services

- Expert team and state-of-the-art uplink trucks
- 24/7 transmission services
- Coverage of major weather events, sports and entertainment stories, press conferences and other breaking news

WORLD CLASS **FIRSTS!**

- First company to transmit 10-channel at-home production for ESPN at > 145 Mbps
- First and only company to transmit 200 Mbps carrier from a transportable uplink
- First and only company with over 70 transportable uplinks (C- and Ku-Band)
- First company to transmit 500 megabits of data out of a single antenna
- First and only company to build mobile teleports (C27 & CK30) for NASCAR & WWE
- First company to provide digitally encrypted pay-per-view transmissions
- First company to uplink 4K signal for pay-per-view event
- First company to provide the largest pay-per-view event ever (Mayweather vs. Pacquiao)
- First and only company with more than 60 certified RFI-EUI staff engineers
- First company to perform two-way 10-path transmission in 1.09 seconds





Clearly Best in Category

BEST in: Engineering

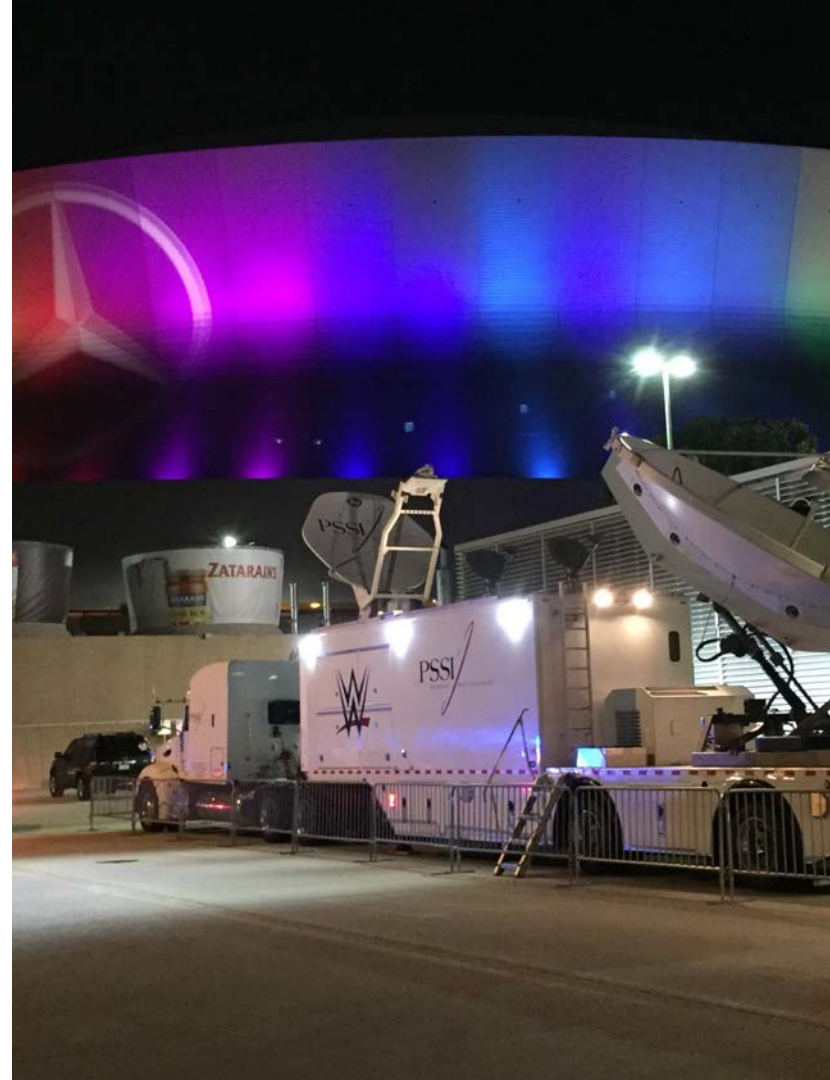
BEST in: Project Management

BEST in: Technology

BEST in: Service Quality

BEST in: Maintenance

BEST in: Facilities



THE PSSI **ADVANTAGE**

WORLD-CLASS VISION

AT-HOME

PRODUCTIONS

Record-setting multipath transmissions — more paths, lower latency, cutting-edge technology and engineering

PSSI IPx

New IP transmission solution providing program ingest, redundancy, data storage and other opportunities via the internet

4K

An industry leader in 4K transmissions — first to provide 4K transmission services for a pay-per-view event

THE PSSI **ADVANTAGE**

LARGEST SUPPLY OF HD DIGITAL ENCODING

306 HD encoders

256 HD decoders

60 modulators

38 multiplexers

“A brand for a company is like a reputation for a person. You earn reputation by trying to do hard things well.” - *Jeff Bezos*

“Momentum is such an important thing to have on your side. And when you do, you’ve got to pour gas on the fire and continue that momentum, build on the momentum, and let that help drive success.” - *Paul Sarvadi*

