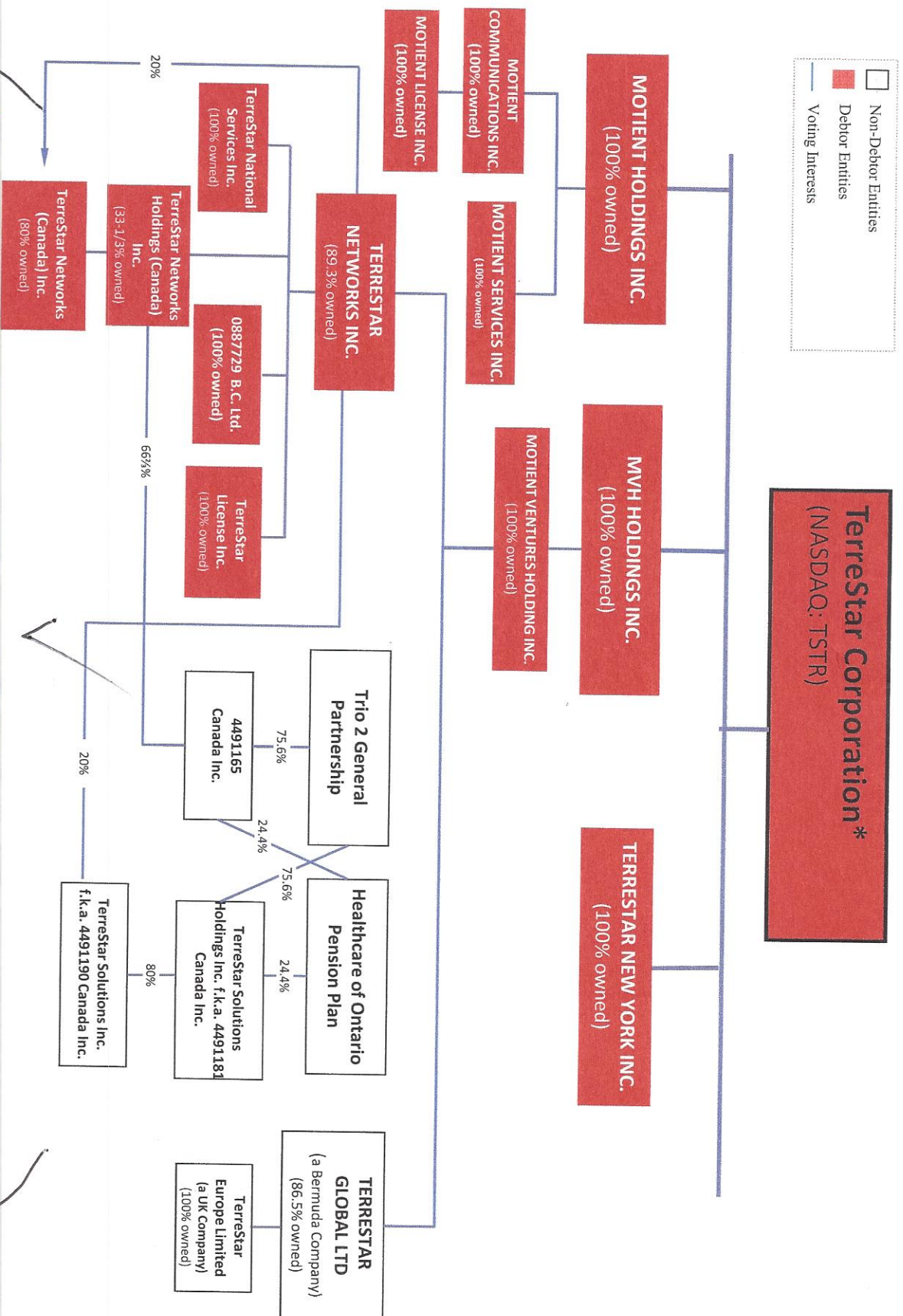
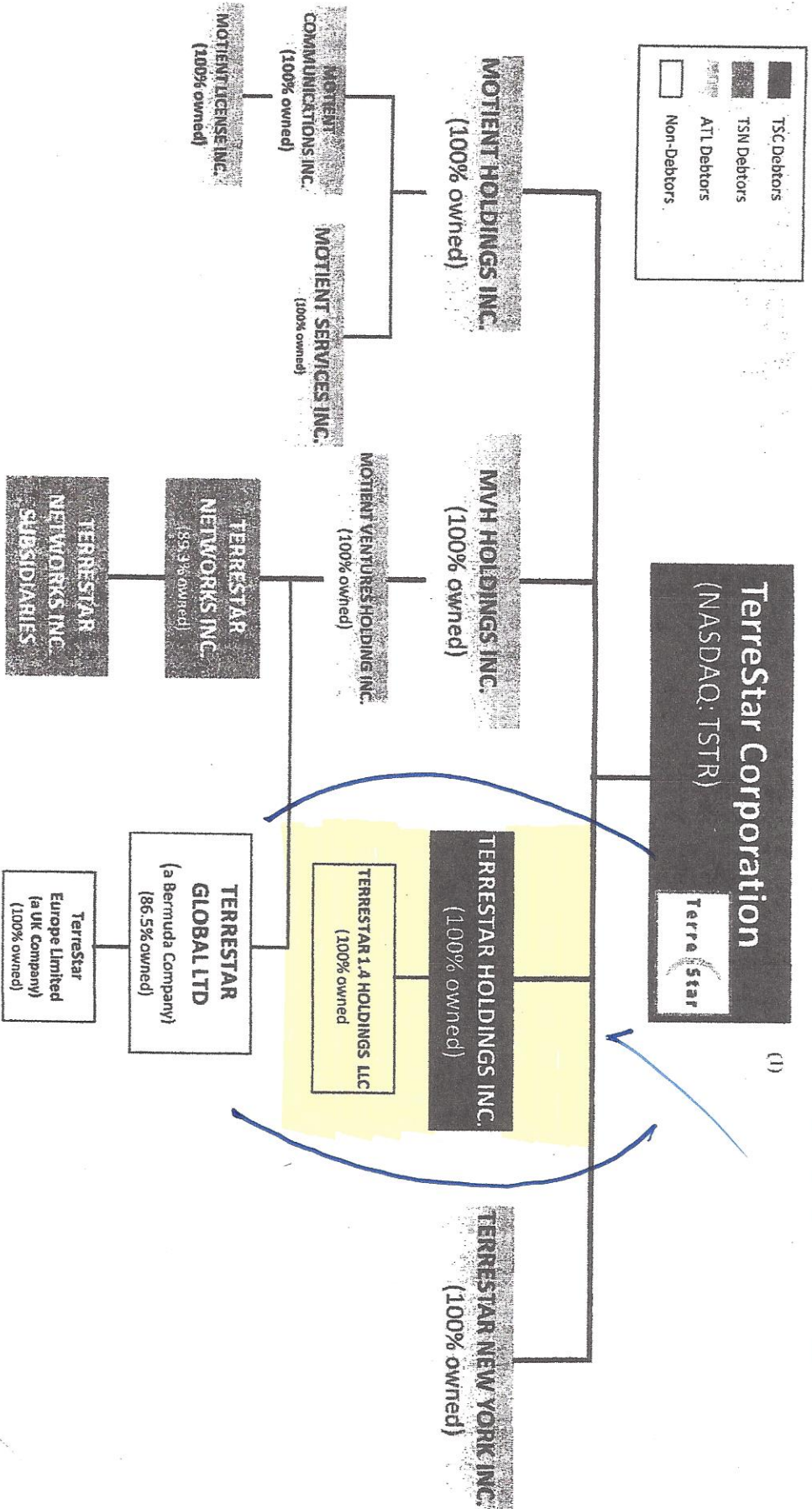


Organizational Chart of TerresStar Corporation



*Entities owning more than 10% of the Common Stock of Terrestrial Corporation include: Harbinger Capital Partners Master Fund I, Ltd.; Harbinger Capital Partners LLC; EchoStar Corporation; and Marathon Asset Management, L.P.

Organizational Chart



(1) Terrestrial Corporation has 5 series of Preferred Stock (Series A, B, C, D and E).