

## **Exhibit 1**

**(Verification and Declaration of Mark Binda)**

---

## **Declaration and Verification of Mark Binda**

I, Mark Binda, hereby declare, under penalty of perjury, as follows:

1. I am greater than eighteen years of age and am competent to make this Declaration and Verification.

2. I am the Senior Director of Programming for Scripps Media, Inc. and have held this position since October 2015. I am also the Program and Research Director for television station WTVF(TV), Nashville, Tennessee (“WTVF” or the “Station”) and have held this position since 1989. Prior to that, I served as WTVF’s Research Director from 1985 to 1989.

3. WTVF is the CBS affiliate for the Nashville Designated Market Area. WTVF serves nine counties located in Kentucky, including Logan County (Russellville), Allen County (Scottsville), and Cumberland County (Burkesville).

4. WTVF has been carried on DISH and DIRECTV at least since each launched local-into-local service in the Nashville DMA.

5. It is my understanding that WBKO(TV), Bowling Green, Kentucky (“WBKO”) is currently carried by Electric Plant Board of the City of Russellville (“EPB Russellville”) in Russellville, Kentucky, by North Central Telephone Cooperative, Inc. (“NCTC”) in Scottsville, Kentucky, and by Duo County Telecom in Burkesville, Kentucky. In September 2017, I telephoned customer service or other personnel for each of these systems and asked if WBKO was currently offered in Russellville, Scottsville, and Burkesville, as applicable. The contacts for EPB Russellville and NCTC told me that WBKO local programming is carried but the Nashville ABC affiliate is substituted during network time. The contact for Duo County Telecom told me that she thought WBKO local programming is carried but the Lexington ABC affiliate is substituted during network time.

6. WTVF regularly provides local news, weather, school closings, traffic and EAS alerts, and other information of local interest to the residents of Russellville, Scottsville, and Burkesville. Over the past year, since September 2016, WTVF aired 38 stories focused on Logan County and 64 stories focused on Allen County. During the same one-year period, WTVF aired 41 stories related to Russellville (some of these may be duplicative of Logan County stories), 34 related to Scottsville (some of these may be duplicative of Allen County), and 11 related to Burkesville. Some recent examples are attached to this Declaration as Attachment 1.

7. Since September 2016, WTVF has aired more than 4,000 stories relating to Kentucky. Not each and every one of these stories is unique, as some may have been repackaged or repeated, but this is common for local news stations. Some recent examples of Kentucky-focused stories are included with Attachment 1.

8. WTVF has numerous advertisers—more than forty—located in Kentucky or northernmost Tennessee, on the Kentucky border, seeking to reach viewers in and around Logan, Allen, Cumberland, and other Kentucky counties in the Nashville DMA.

9. WBKO and WTVF broadcast some of the same syndicated programs. Both stations broadcast the syndicated programs “Ellen” and “Inside Edition” on weekdays. On weekends, both stations broadcast the syndicated programs “Leverage,” “Today’s Homeowner,” “P. Allen Smith Garden Style,” “Castle,” and “Blue Bloods.”

10. I verify that the factual matters contained in the foregoing Opposition to Petitions for Special Relief are true and correct to the best of my information, knowledge, and belief.

**[signature appears on the following page]**

I declare, under penalty of perjury, that the foregoing Declaration and Verification is true and accurate to the best of my knowledge, information, and belief.

September 19, 2017  
Date

Mark Binda  
Mark Binda  
Senior Director of Programming, Scripps  
Media, Inc. and  
Program and Research Director, WTVF



Attachment 1  
(Examples of Programming Targeting Russellville, Scottsville, and  
Burkesville and Kentucky, Generally)

[More Than 2 Dozen Rescued At Daycare From Flooding \(5/19/17\)](#) Rain showers that passed through overnight caused flooding in many areas, including in **Scottsville**, Kentucky where more than two dozen ...



[Man Accused Of Shooting Girlfriend Pleads Not Guilty](#) Oct 13, 2016 ... A **Scottsville** man who made a public apology on Facebook minutes before the mother of his infant child was shot to death has pleaded not guilty.

[Meningitis Victims Still Haven't Received Settlement](#) . Oct 18, 2016 ... **SCOTTSVILLE**, Ky. - It was a deadly outbreak that killed 64 people nationwide, sickened hundreds and left scores more in financial ruin.



[Trial Date Set In Murder Of 7-Year-Old Kentucky Girl](#) (September 1, 2017) The trial date has been set for the Kentucky man accused of kidnapping, raping, and killing a 7-year-old girl in **Allen County** .



[Kentucky Sisters Reported Missing -](#) May 24, 2017 ... **SCOTTSVILLE**, Ky. - Two sisters have been reported missing in Allen County, Kentucky.



**Battle Over Horse Hockey in Kentucky (5/25/17)** That's right... members of the Amish community near Russellville, Kentucky will soon be headed to court after being cited for violating an ordinance that requires horses to wear bags to catch their droppings.

### **3 Tennessee Juveniles Arrested After Kentucky Pursuit (8/9/17)**

**RUSSELLVILLE, Ky.** - Three juveniles from Tennessee have been charged after a pursuit in a stolen vehicle that ended in Logan County, Kentucky.



### **Suspicious Packages Taped To Doors Deemed 'Non-Hazardous' (3/27/17)**

**ELKTON, Ky.** - Suspicious packages were found taped to the doors of government buildings in Todd and Logan counties in Kentucky. Officials said they were found on the doors of the old and new courthouses in Todd County, as well as the courthouse in Logan County on Monday morning. Emergency crews were notified around 7:30 a.m.



**Severe Weather Hits On Memorial Day Weekend (5/26/17)** A Storm 5 Alert was issued for Saturday and Sunday of Memorial Day weekend as severe storms with damaging winds and possible isolated tornadoes



[Police Search For Missing 17-Year-Old - NewsChannel 5 Nashville](#)

Jan 18, 2017 ... Authorities at the Warren County Sheriff's Office said 17-year-old Hailey "Kai" Groark was last seen at Wendy's on **Russellville** Road around ...



#### [Schools Close For Total Solar Eclipse - NewsChannel 5 Nashville](#)

Aug 7, 2017 ... Rutherford County Schools; Robertson County Schools; Cheatham County ... Christian County Schools; Warren County Schools; Logan County ...



#### [Ky. Man Arrested For Child Sexual Exploitation ... - Nashville](#)

Sep 1, 2017 ... A man has been arrested in Logan County, Kentucky on crimes related to child sexual exploitation. Officials with the Kentucky State Police said ...



#### [Flood Cleanup Continues; More Rain Moves Through ... - Nashville](#)

May 20, 2017 ... The main threats were winds around 60 miles per hour, hail, and flooding rain -- especially in Sumner County, as well as Allen County, ...



### [Man Charged In Fatal Shooting In Cumberland Co.; 1 ... - Nashville](#)

Oct 13, 2016 ... Officials with the Kentucky State Police said 60-year-old Daniel A. Blair, from Burkesville, was arrested Thursday at 3:20 a.m. at 427 Veterans .



..

### [Heavy Rains Cause Flash Flooding In Sumner County ...](#)

May 19, 2017 ... Portions of Sumner County have been flooded as heavy rains ... Cannon, Cheatham, Clay, Coffee, Cumberland, Davidson, DeKalb, ... Rain showers overnight brought flooding to many areas, including Allen County, Kentucky.

**More Than 2 Dozen Evacuated In Kentucky Town (9/1/17)** More than two dozen people have been evacuated from homes in Guthrie, Kentucky, located in Todd County, due to flooding caused by heavy rains from Harvey's remnants.



**Thousands Begin Arriving In Hopkinsville For Coast-to-Coast Eclipse (8/18/17)** HOPKINSVILLE, Ky. - Around 25,000 have already arrived in Hopkinsville, many putting up tents in campgrounds, ready for the big moment. They've all come to witness the total solar eclipse. "We planned this last year. We booked about four months ago," said Joshua Lewis, visiting from Louisville. "I

went to Mexico in 1991 and saw the seven-minute eclipse with my family, so I wanted to do this with my family."

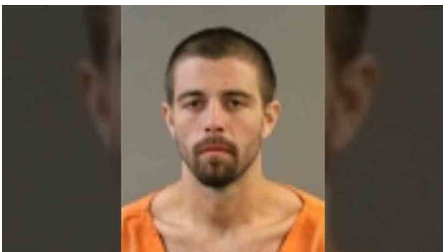


### **Thousands Flock To Hopkinsville For Once In a Lifetime Eclipse (8/21/17)**

HOPKINSVILLE, Ky. - With stunning hues of orange and red, the sun rose over corn fields and grain silos across southern Kentucky on Monday, a grand entrance of sorts on a day when the moon would end up stealing the show.



**Woman Found Dead, Taped Up In Tote (8/19/17)** BOWLING GREEN, Ky. - A man has been arrested after a woman was found dead and taped up inside a storage tote in Warren County, Kentucky.



**Family Upset Over Eclipse Watch Event At Cemetery (8/22/17)** FRANKLIN, Ky. - A family with members buried at a Simpson County, Kentucky cemetery is upset after pictures were posted of an eclipse watch event.





**Expired Plate Leads To Multiple Drug Charges (9/5/17)** MURRAY, Ky. - An expired license plate led to the arrest of a man wanted on warrants out of Kentucky and multiple additional charges.

Officials from the Murray Police Department said Officer Kyle Waldron saw a black Chevrolet Camaro with expired tags in Murray. The vehicle was driven by 27-year-old William Stewart from Paducah.



**Comfy Cow Recalls Ice Cream Due To Possible E. Coli (8/8/17)** A Kentucky-based ice cream chain said it has recalled some of its most popular flavors due to possible E. coli contamination.



**Merchandise, Meat Recovered In Massive Shoplifting Bust (8/1/17)**

HOPKINSVILLE, Ky. - Christian County Sheriff's deputies arrested four women in connection to a string of shoplifting reports, and seized thousands of dollars in stolen items including more than \$700 of meat. The complaints were from several jurisdictions including Christian County, Henderson County, Hopkins County, and Evansville Indiana.



**Woman Killed In All Terrain Vehicle Crash (7/29/17)** CADIZ, Ky. - A woman driving an all-terrain vehicle in Trigg County, Kentucky was killed in a wreck. Police said Jamie Hodges was on Monarch Street in Cadiz when she crashed Friday night and was thrown off the vehicle.

### **Little Green Men' 62nd Anniversary Is Same Day As Total Solar Eclipse**

**(8/11/17)** The 62nd anniversary of the Kentucky "Little Green Men" sighting falls on the day of the total solar eclipse. Back on August 21, 1955, a Kelly, Kentucky family claimed they were visited by little green men a.k.a aliens.



### **Kentucky Expects 500K Visitors for Eclipse (7/31/17)**

**HOPKINSVILLE, Ky. -** Kentucky officials said they're expected at least 500,000 visitors for August's total solar eclipse. They've urged anyone who plans to travel to western Kentucky to view the eclipse to make plans now.



### **Expect Little To No Cell Service In Hopkinsville For Solar Eclipse (7/28/17)**

The week of the solar eclipse, people from across the country and 26 international countries will arrive in Hopkinsville, Kentucky. It means folks won't be able to rely on their cell phones to get around or communicate.

**Woman Charged In Fatal Hopkinsville Hit-&-Run (7/24/17)** A woman has been charged in a fatal hit-and-run in Hopkinsville, Kentucky. The incident happened on East 4th Street around 10:30 p.m. Sunday.



### **Charter Schools, Bible Literacy Classes Among New Kentucky Laws**

New laws have taken effect in Kentucky that allow charter schools, regulate Bible literacy classes in public schools, and limit the supply of prescription painkillers. Most of the laws passed in this year's legislative session by the state's new Republican majority took effect Thursday.

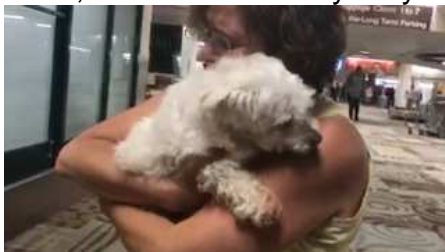


**6 Dead On Interstate 65 Crash In Kentucky (7/14/17)** BOWLING GREEN, Ky. (AP) - Kentucky authorities said six people died as a result of a four-vehicle crash on Interstate 65.

Kentucky State Police Trooper Jeremy Hodges said the wreck happened just after 10:30 p.m. Thursday on I-65 near Bowling Green. The crash involved two passenger vehicles and two tractor-trailers.



**Family Reunited With Missing Dog After Two Years (5/23/17)** BOWLING GREEN, Ky. - A Tammy and Thad Crews said they never gave up hope their small, senior Maltese named Trixie was still alive. But after more than two years of searching for the dog, who went missing from the Crews' front yard in January 2015, it seemed unlikely they'd see the dog again.



**Victims Identified in Hopkinsville Plane Crash (5/12/17)** HOPKINSVILLE, Ky. - There were no survivors in a plane crash in Hopkinsville, Kentucky, according to the Christian County Sheriff's Office. A husband and wife have been confirmed dead.



**\$1.5M Worth Of Heroin Seized From Semi In Ky. (5/10/17)** EDDYVILLE, Ky. - More than \$1 million worth of heroin was seized when authorities searched a semi on Interstate 24 in Kentucky. According to Kentucky State Police, the troopers stopped a tractor trailer shortly before 7 p.m. Monday in Lyon County for a vehicle inspection.



**Strong, Severe Storms Move Through Kentucky (3/1/17) CADIZ, Tenn. -**

Strong to severe storms moved through parts of Southern Kentucky overnight, causing heavy damage in some areas. Trigg County was one of the harder hit areas in the region, as high winds ripped roofs off of buildings and scattered branches along the road.



**Hopkinsville FD Goes Door To Door To Supply Smoke Alarms (1/30/17)**

HOPKINSVILLE, Ky. - The Hopkinsville Fire Department has taken a unique approach to equip every single home in the city with a working smoke detector.



**Elderly Couple Reported Missing Found Safe (1/27/17) PARIS, Tenn. -**

An elderly couple has been found safe after being reported missing while driving back from Kentucky to Henry County.

Officials with the Murray Police Department said 89-year-old James Clark and 73-year-old Eula Clark were last seen leaving the Murray-Calloway Hospital Thursday night



**4 Injured In Helicopter Crash At Fort Campbell (1/31/17)** FORT CAMPBELL, Ky. - Four Fort Campbell soldiers were injured when a helicopter crashed during a training incident. The incident happened at 11:07 a.m. Tuesday at the post located on the Tennessee-Kentucky border.



**WKU Wins C-USA 58-44 Over Louisiana Tech (12/3/16)** BOWLING GREEN, Ky. - Anthony Wales rushed for 209 yards and four touchdowns, Mike White threw for 421 and three more scores and Western Kentucky defeated Louisiana Tech 58-44 on Saturday in the Conference USA championship game.



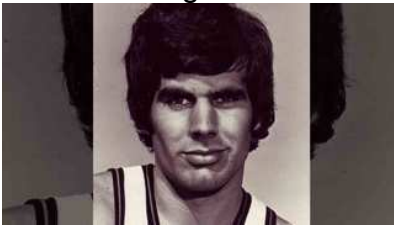
**2 Fort Campbell Soldiers Fatally Shot In Oak Grove (2/16/17)** OAK GROVE, Ky. - Two Fort Campbell soldiers were fatally wounded in what investigators have called a domestic-related shooting. The incident happened around 7:30 p.m. Thursday at a home on Arkansas Avenue in Oak Grove.



**Kentucky Chase Ends In Tennessee; 4 In Custody** GLASGOW, Ky. - A high speed chase in Kentucky crossed state lines and ended in multiple arrests. (7/1/17) The chase started when police in Barren County, Kentucky went to a Glasgow Walmart looking for three missing teenagers.



**Former Vanderbilt Basketball Player Found Dead In Kentucky (6/22/17)** A former Vanderbilt University men's basketball player was found dead in Kentucky. Authorities said the body of 64-year-old Joe T. Ford, of Paducah, Kentucky, was found inside his 2010 GMC Arcadia Thursday morning. A McCracken County, Kentucky sheriff's deputy responded to a report of vehicle tracks leading from Interstate 24.



**3 Sought After Robbery Turns Into Homicide (3/18/17)** BOWLING GREEN, Ky. - Police in Bowling Green, Kentucky confirmed they're searching for three suspects after a robbery turned into homicide. The incident happened just after 3 p.m. at the La Placita market in the 700 block of Morgantown Road.



**Middle Tennessee Sprints Past Western Kentucky 91-76 (1/14/17)** JaCorey Williams was 12 of 19 from the floor for 27 points as Middle Tennessee sprinted to an early lead and coasted to a 91-76 win over Western Kentucky on Saturday night.



**Tornado Touches Down Near Cerulean (3/29/17)** The National Weather Service confirms another tornado touched down across the border in Kentucky. We're told the E-F-0 tornado was on the ground for about 4 and a half miles Monday near Cerulean. Officials say six barns were damaged-- and one small one was leveled. Thankfully no one was hurt.

**Tornado Confirmed in Trigg/Christian Counties (3/29/17)** The National Weather Service is confirmed a THIRD tornado-touchdown during Monday's storms. The E-F-Zero twister damaged barns along the Trigg County - Christian County line in Kentucky.

**Roads covered with sheets of Ice in Kentucky (1/6/17)** In Kentucky, a dusting of snow blanketed front yards but it was a sheet of ice that covered most of the roads! The falling snow came through quick-- but made for a slippery and dangerous morning commute. Officials tell us salt has been spread on all state routes but they remind motorists that the extreme cold expected during the overnight hours will create another opportunity for re-freezing.

**Snow Falling (1/6/17)** The snow is starting to fall again in parts of the mid-state this morning.

Parts of Tennessee and Kentucky saw a light dusting yesterday. We are currently under a Winter Weather Advisory. Here's how this could impact your morning commute...



**Crews Cleaning Up Severe Storm Damage (3/1/17)** We've already seen storm damage in parts of Southern Kentucky. Take a look at the damage left behind in Trigg County. NewsChannel5's Sophie Neilson-Kolding is live at the DOT headquarters there. Some of the damage is pretty significant. You can hear crews have been hard at work - this video was posted by the Trigg County Sheriff's office.

There's about a half mile of this road where the wind was so strong it also ripped roofs right off buildings and you see all the branches in the road.

**Kentucky Asks FEMA for Joint Damage Assessments (8/3/16)** Help is headed to Kentucky... after a stormy July left a big mess. The state is asking the Federal Emergency Management Agency for a joint preliminary damage assessment of 23 counties... including Christian... Todd and Trigg. We're told FEMA will send a team to survey the damage... and review storm-related expenses.

**KENTUCKY GOVERNOR HIT WITH ETHICS COMPLAINT (6/6/17)** Kentucky Governor Matt Bevin at the center of an ethics complaint. Representative Darryl Owens filed that complaint -- raising questions about the purchase of Bevin's home. The Republican Governor bought the Louisville property for 1-point-6 Million dollars... but Representative Owens says that's not a fair market price. According to the county -- it's worth nearly 3-Million. The Governor's spokesperson says the complaint is "politically motivated."

**GOVERNOR BEVIN Signs Order on State Jobs (2/2/17)** Kentucky Governor Matt Bevin signed an executive order that gives people with criminal records a "fair chance" at landing state jobs. This action will remove the box on state job application forms that asks about criminal history.

**GOVERNOR BEVIN Drops Efforts to Shut Abortion Clinic (4/7/17)** Kentucky Governor Matt Bevin will not stand in the way of a federal lawsuit! That's why he's dropping efforts to shut down Kentucky's last abortion clinic. A federal lawsuit to halt the impending shutdown of E-M-W Women's Surgical Center in Louisville is now underway.

**KENTUCKY SENATOR RAND PAUL WINS RE-ELECTION (11/9/16)** Kentucky Senator Rand Paul will keep his U-S Senate seat. Paul dropped out of the Presidential Race back in February... then decided to run for re-election. He defeats Democratic challenger Jim Gray... with 57-percent of the vote.

**DOGS TAKE PART IN KENTUCKY HALLOWEEN PARADE (10/24/16)** It's not just \*humans\* who are gearing up for Halloween! Take a look at these costumed pooches! They took part in a Halloween parade just for dogs in Covington Kentucky yesterday! This year's theme was Your Favorite Fairytale! Dogs

dressed as dragons ... princesses ... and pirates -- paraded down the street - strutting their stuff. Of course there were prizes for the best costume - all money raised from the event went to local charities.

**KENTUCKY GOATS ON THE LOOSE (5/10/16)** A few four-legged athletes got carried away before their race in Kentucky. We're talking about the first annual \*running of the goats\* in Covington. A group of six goats escaped their handlers over the weekend-- minutes before they were supposed to trot through the parade.

**MAYOR OF BOWLING GREEN, KY GLAD FOR CORRECTION (2/3/17)** The mayor of Bowling Green, Kentucky, Bruce Wilkerson, is glad Kellyanne Conway corrected herself. This week Conway told M-S-N-B-C's Chris Matthews she bet there was very little coverage when President Obama issued a travel ban -- after what she called the "Bowling Green massacre". The mayor released a statement saying "I understand during a live interview how one can misspeak and we appreciate the clarification."

**KENTUCKY CRAZY BOAT CHASE (6/27/17)** This chase went across Lake Cumberland. Wildlife officials tell me it started when witnesses called them about a man who was too intoxicated to be driving a boat. The chase that followed lasted for more than an hour and crossed over into Wayne and Clinton Counties.

**MARIJUANA PLANTS DISCOVERED IN CORN FIELD (10/4/16):** Thousands of marijuana plants discovered in Kentucky. Kentucky State Police sent us these photos from Tompkinsville. Officers spotted more than 5-thousand pot plants from the sky... dotted among a corn field. It took them more than a day to pull up and destroy the plants.

**KENTUCKY NATIONAL GUARD DEPLOYS (12/16/16)** It was an emotional goodbye to members to members of the Kentucky National guard. Hundreds of friends and family attended their sendoff ceremony Wednesday before yesterday's deployment. More than 150 members will repair roads and runways and work on projects to support ongoing military operations in the Middle East and central and south Asia.

**KENTUCKY MAYOR RECOVERING AFTER CHRISTMAS EVE HEART ATTACK (12/28/16)** A Kentucky mayor is recovering after suffering a heart attack Christmas Eve. Hopkinsville Mayor **Carter Hendricks** was walking with a group on the city's greenway when he began having trouble breathing. Emergency room doctors confirmed it was a heart attack... then took him into surgery. Mayor Hendricks is now at home resting and is expected to make a full recovery.

**NEWSCHANNEL 5 HOLIDAY HERO BLOOD DRIVE (12/26/16)** News Channel 5 is helping sponsor this event today. It's part of the Holiday Hero blood drive.

Typically this time of year is slow for blood donations.. people are traveling, they're sick, it's cold outside and people don't want to leave their house.. But the need for blood never goes away. If you can't make it to the Headquarters here, there's also mobile blood drives at. The Wal-Mart on Brookmeade Drive in Columbia, the Patrick Rehab-Wellness Center in Fayetteville And the O'Charley's in Bowling Green, Kentucky...

**KENTUCKY CHRISTMAS TREES (12/23/16)** Even fish need a little Christmas cheer! The Kentucky Department of Fish and Wildlife Resources urges any resident with a \*natural\* Christmas tree to donate it to a fish habitat. To donate - your tree must be free of lights ... ornaments ... tinsel ... and any other decoration. The state will accept trees across Kentucky until January 15th.

**ACTRESS JENNIFER LAWRENCE DONATES 2 MILLION to KENTUCKY HOSPITAL (2/16/16)** Actress Jennifer Lawrence is shelling out some serious cash to help a children's hospital in Kentucky. The "Hunger Games" star donated 2-million dollars to build the "Jennifer Lawrence cardiac intensive care unit" at Kosair Children's Hospital.

**BOWL GAMES (12/18/16)** The bowl season is underway. Conference U-S-A champ Western Kentucky meets Memphis in the Boca Raton Bowl Tuesday.

**OAK GROVE COUNTERFEITING SUSPECTS AT LARGE (5/26/17):** police in Oak Grove searching for two counterfeiting suspects. Take a look and see if you recognize these guys. Investigators say two men met a woman at a community center to buy her phone. We're told they paid the woman with 600 dollars of bogus cash. If you recognize either of these two guys call Oak Grove police at 270-439-4602.

**KENTUCKY STATE LINE CLOSURE (9/17/16):** Interstate 24 is down to just one lane this morning near the Kentucky state line after a multi-vehicle crash. We're told a tractor trailer carrying energy drinks caught on fire around the 92 mile marker just north of Clarksville, in Oak Grove, Kentucky.

**OAK GROVE MAYOR SUSPENDS POLICE OFFICER (10/6/16):** The Oak Grove police officer who was arrested Sept. 28 for allegedly raping and beating a prostitute has been suspended without pay. Oak Grove Mayor Bea Burt said Sgt. Benjamin Walden was suspended as soon as the paperwork was completed.

**EXPLOSION AT MURRAY STATE UNIVERSITY (6/28/17):** [An](#) explosion rocks a dormitory at Murray State University. Kentucky State Police and a handful of other agencies rushed to the scene in Calloway County just before five. You can see walls on one side of the entire first floor of the building were blown off by the impact. The dorm wasn't occupied, as it's summer break -- but a maintenance worker was hurt in the blast.



**DRUG ARRESTS IN GRAVES COUNTY (3/7/17):** *Kentucky State Police* arrested a couple for giving drugs to a minor. Police were called to a hospital in Fancy Farm, Kentucky yesterday to investigate a juvenile who had been given illegal drugs. Troopers then arrested Greg and Jennifer Gibson for several drug charges and Wanton Endangerment. They're both in Graves County Jail this morning.

**30,00 BEES in KENTUCKY HOME (4/14/17) (3/7/17):** Bees are fine at a distance, but what if you found thousands in your wall? That's the situation one Mayfield, Kentucky woman is dealing with - bees, and a lot of them. "Anywhere from thirty thousand to forty thousand bees at least," said Specialty Wildlife Control Agent, Micah Seavers, with Seavers Beavers and More Wildlife Management. "I knew there was a nest in there. I just didn't realize how big," said Debbie Travis, who owns the home.

**KENTUCKY WOMAN CELEBRATES 105<sup>TH</sup> BIRTHDAY (1/26/17):** SO... TUESDAY WAS JUST AN ORDINARY TUESDAY. RIGHT? WELL, NOT IF YOU'RE TURNING 105 !!!! THE BIRTHDAY GIRL IS ELIZABETH BURTON...OF MAYFIELD, KENTUCKY. AND.. OF COURSE THERE WAS A PARTY TO CELEBRATE THE BIG DAY COMPLETE WITH SONGS AND A BIG BIRTHDAY CAKE. HER SECRET TO LIVING A LONG LIFE???? SIMPLE... HARD WORK.

**COLLEGE FUNDING FIGHT IN KENTUCKY (10/17/16):** A college funding fight is pitting Kentucky's governor against its public universities. Today a state judge ordered Governor Matt Bevin to release 17-point-8 million dollars to those universities. He'd ordered the campuses to cut 2 percent of the budget, but the legislature didn't approve the cuts. Bevin withheld the funds anyway, which the Kentucky Supreme Court ruled he couldn't do. That money will be spread among 8 universities, including Kentucky, Murray State, Western Kentucky, and Louisville.

**KENTUCKY COAL MINE SAFETY (2/14/17):** New tonight -- a coal mine employee indicted for falsifying a safety record... and lying to the feds! Charges were filed today against Daniel Couch Junior, a maintenance chief at Paradise Number 9 Mine in Muhlenberg County. Records say an inspector visited the mine last May and didn't find records of required "fire suppression checks." But two days later the inspector returned to find the record book \*changed\* to show the checks were made.

**MUHLENBERG COUNTY SCHOOLS CLOSED (2/6/17):** Kids in one Kentucky county have school off today because of illness! All Muhlenberg County Schools are closed today AND tomorrow... because of a flu outbreak. Classes and students' activities have been canceled. Normal classes will resume Wednesday.

**ROAD CLOSURES IN CHRISTIAN COUNTY (9/5/17):** A warning for drivers in the Hopkinsville area this morning. C-S-X Railroad says Old Madisonville Road \*AND\* East 17-th Street...between South Clay Street and South Campbell Street will stay closed until tomorrow at the latest.... due to a weather delay of paving. Be sure to be careful in those areas as you head to school or work.

**Exhibit 2**  
**(WTVF Contours)**

---

TV STATION PROFILE

**WTVF** NASHVILLE, TN

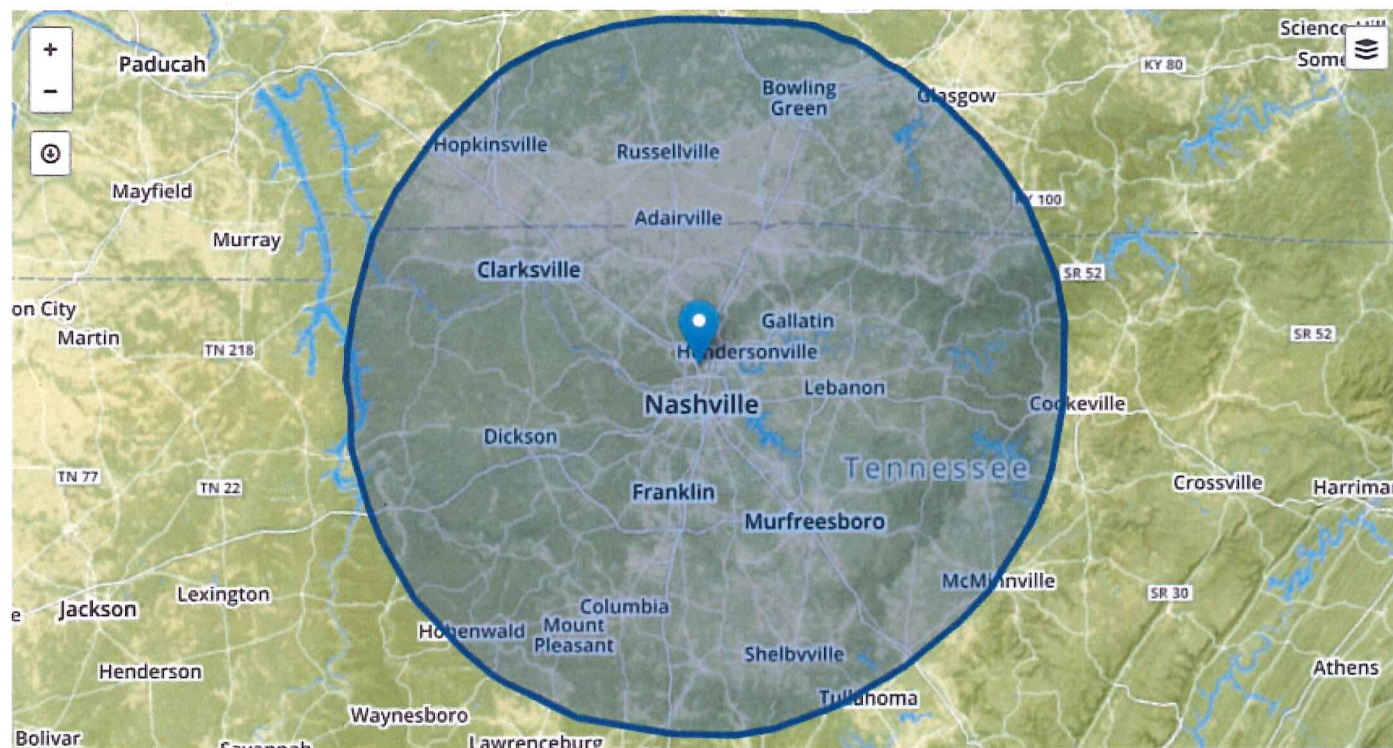
Virtual Channel **5** | RF Channel **25** | Facility ID **36504**

Search WTVF Profile



**NewsChannel 5**  
NETWORK

## Contour Maps



TV STATION PROFILE

**WTVF** NASHVILLE, TN

Virtual Channel **5** | RF Channel **25** | Facility ID **36504**

Search WTVF Profile



**NewsChannel 5**  
NETWORK

## Contour Maps

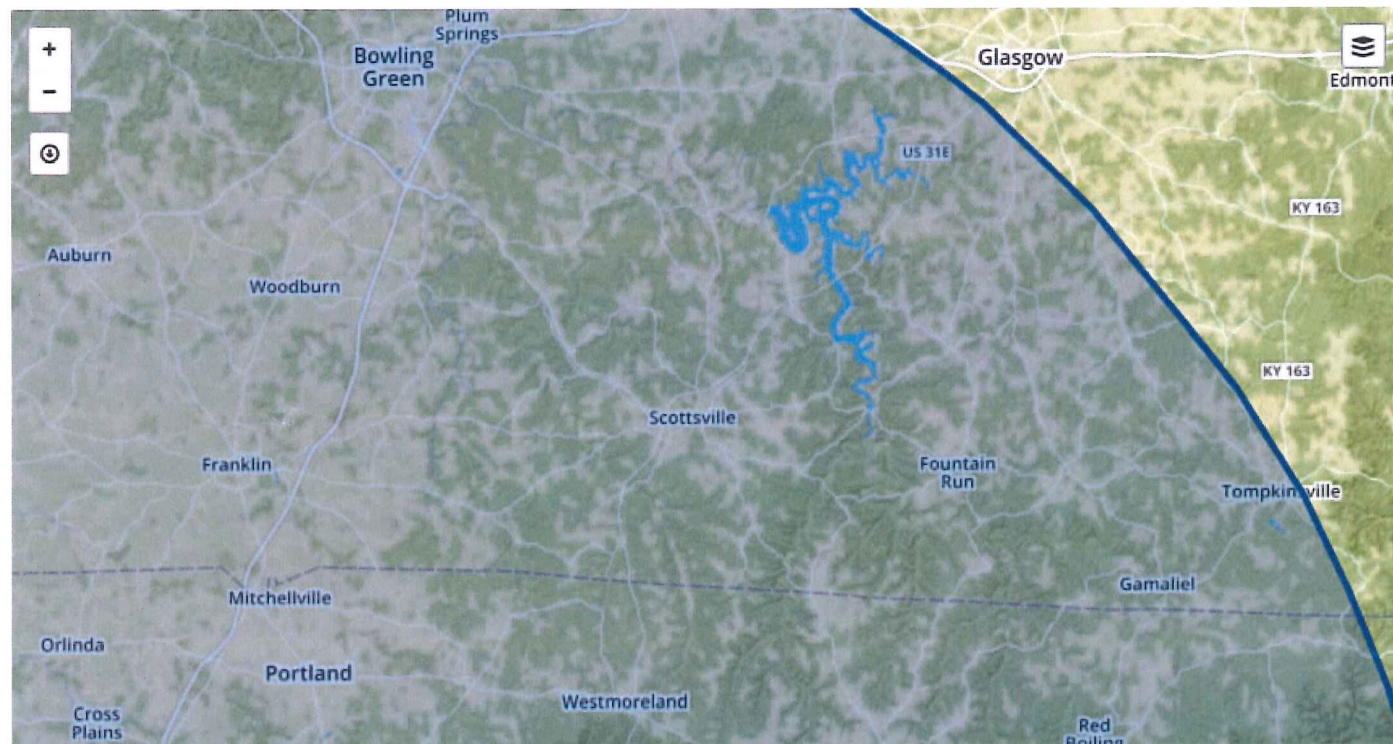
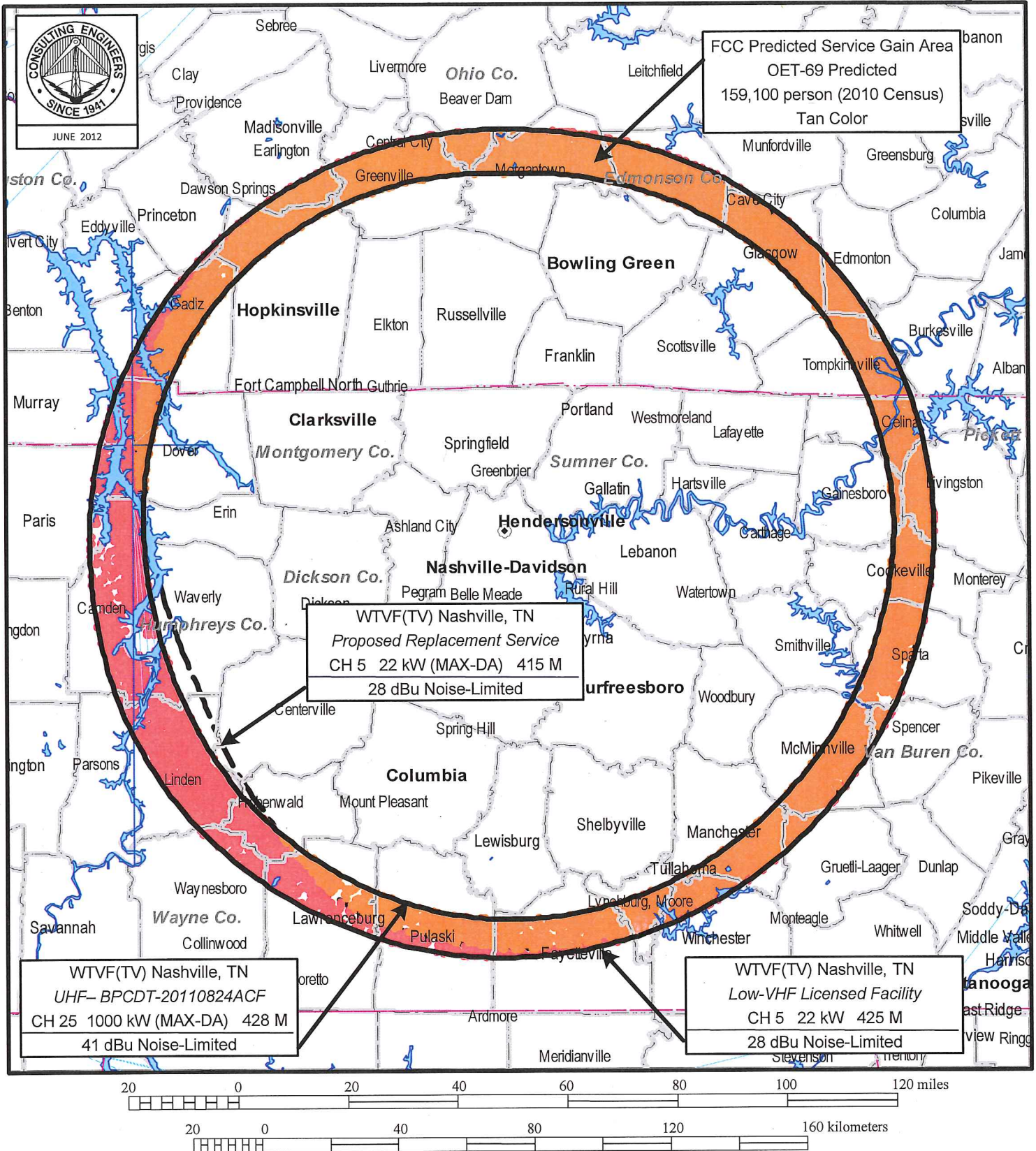




Figure 2



# **WTVF LOSS AREA BASED UPON WTVF PROPOSED CHANNEL 5 REPLACEMENT SERVICE TRANSLATOR**

**STATION WTVF(TV)**  
**NASHVILLE, TENNESSEE**  
du Treil, Lundin & Rackley, Inc Sarasota, Florida

## **Exhibit 3**

**(EPB Russellville 2017 Channel Lineups and Information from  
<http://www.epbnet.com/index.php/tv/residential-tv/>)**



## Essential TV

Antenna TV	38
Comet TV	42
COZI	20
Create	16
C-Span	43
C-Span2	44
C-Span3	45
CW (Bowling Green)	19
CW 58 (Nashville)	14
EPB Smart TV3	3
EPB Smart TV3 Local Weather	1
Escape TV	149
Eternal World EWTN	32
GETTV	52
HillSong	47
Home Shopping Net	21
Inspiration	33
ION	10
ION Life	12
JCTV	48
Justice	41
KET (PBS-Bowling Green)	34
KET KY (Bowling Green)	36
KET2 (PBS Encore-BG)	35
LAFF TV	7
Me TV	15
MY 30 (Nashville)	30
NASA TV	39
QUBO	11
QVC	28
Shop NBC	29
Smile	49
TBN	46
The Weather Channel	31
WBKO (ABC-Bowling Green)	13
WGN	9
WKRN (ABC-Nash)	2
WKYU (Bowling Green)	18
WNPT (PBS-Nashville)	8
WNPT2 (Nashville)	22
WTVF (CBS-Nash)	5
WSMV (NBC-Nash)	4
WTVF 5+ (Nashville)	6
WZTV (FOX-Nash)	17

## Elite TV

A&E Network	82
ABC Family Channel	75
AHC	92
AMC	105
Animal Planet	72
BBC America	95
BET	159
Bravo	136
Cartoon Network	74
CBS Sports	57
Chiller	104
Cloq	100
CNBC	116
CNBC WORLD	117
CNN	110
Comedy Central	98
Country Music Television	150
Destination America	85
Discovery	84
Discovery Family	73
Discovery Fit & Health	140
Disney Junior	64
Disney XD	65
E! Entertainment	138
ESPN	23
ESPN Classic	24
ESPN U	26
ESPN 2	27
ESPNNews	25
EsqTV	141
Food Network	132
Fox Business	119
Fox News Channel	118
Fox Sports 1	55
Fox Sports South	54
Fusion	113

## Extreme TV

BBC World News	112
BET Centric	161
BET Gospel	160
Boomerang	71
CMT PURE	151
Crime & Investigation	89
DIY	61
Fox Movie Channel	102
Great American Country	152
Hallmark Movie Channel	81
Horse Racing TV	123
IndiePlex	108
LOGO	137
Military History Channel	93

FX	77
FYI	83
Game Show Network	101
Golf Channel	58
Hallmark Channel	80
History Channel	90
HLN Headline News	111
Home and Garden TV	134
IFC	106
Investigation Discovery	88
Lifetime	129
Lifetime Movies Network	130
Lifetime Real Women	131
MSNBC	115
MTV	153
National Geographic	94
NBC SPORTS	59
NFL Network	50
Nick Jr.	67
Nickelodeon/Nick at Nite	66
OWN Oprah	139
Oxygen	135
Science Channel	86
SEC Network	53
Spike TV	97
Sprout	97
SyFy Channel	99
TBS	121
The Disney Channel	63
The Learning Channel	87
TNT	78
Travel Channel	96
truTV	120
Turner Classic Movies	103
TV Land	79
USA	76
VH1	162
Viceland	91

MoviePlex	107
MTV Classic	163
MTV HITS	157
MTV JAMS	156
MTV2	154
NFL RedZone	51
NickToo	70
NickToons	69
Outdoor Channel	62
RetroPlex	109
RFD TV	180
Teen Nick	68
The Cooking Channel	133
The Sportsman Channel	60
VH1 Soul	164

## Extra TV

### Premium Movie Channels

HBO	14 Channels	201-214
Cinemax	12 Channels	215-226
Showtime	20 Channels	230-249
Starz	20 Channels	250-269
HD Premiums	59 Channels	701-759

### Pay Per View Channels

PPV Preview		939
PPV	5 Channels	940-947
ESPN PPV	6 Channels	910-915

### Digital Music Channels

Digital Music	50 Channels	300-350
---------------	-------------	---------



165 E. Fourth Street  
P.O.Box 418  
Russellville, KY 42276  
270.726.2466

[www.epbnet.com](http://www.epbnet.com)



## HD TV

A&E HD	582	Home and Garden HD	634
ABC Family HD	575	INSP HD	533
AMC HD	605	Investigation Discovery HD	588
Animal Planet HD	572	ION HD	510
AXS TV HD	673	KET (PBS-Bowling Green) HD	534
BBC America HD	595	Lifetime HD	629
BET HD	659	Lifetime Movies HD	630
Bravo HD	636	MSNBC HD	615
C & I HD	589	MTV HD	653
Cartoon Network HD	574	MTV Live HD	665
CBS Sports HD	557	MTV2 HD	654
CNBC HD	616	MY 30 (Nashville) HD	530
CNN HD	610	NASA HD	539
CNN Headline News HD	611	National Geographic HD	594
Comedy Central HD	598	NBC Sports HD	559
Country Music Television HD	650	NFL Network HD	550
C-Span HD	543	NFL RedZone HD	551
C-Span2 HD	544	Nickelodeon /Nick at Nite HD	566
C-Span3 HD	545	QVC HD	528
CW 58 (Nashville) HD	514	RFD TV HD	680
Destination America HD	585	Science HD	586
Discovery Family HD	573	SEC Network HD	553
Discovery HD	584	Smithsonian HD	675
Disney HD	563	Spike HD	597
Disney Junior HD	564	Sportsman HD	560
Disney XD HD	565	SYFY HD	599
DIY HD	561	TBS HD	621
E! Entertainment HD	638	The Learning Channel HD	587
EPB Smart TV3 HD	503	The Weather Channel HD	531
EPB Smart TV3 Local Weather HD	501	TNT HD	578
ESPN HD	523	Travel Channel HD	596
ESPN2 HD	527	Tru TV HD	620
ESPNews HD	525	Turner Classic Movies HD	603
ESPNU HD	526	TV LAND HD	579
Food Network HD	632	Universal HD	672
Fox Business HD	619	USA HD	576
Fox News Channel HD	618	Velocity HD	670
Fox Sports 1 HD	555	VH1 HD	662
Fox Sports South HD	554	Viceland HD	591
Fusion HD	613	WBKO (ABC-Bowling Green) HD	513
FX HD	577	WGN HD	509
FX Movie HD	602	WKRN (ABC-Bowling Green) HD	502
FYI HD	583	WNPT (PBS-Nashville) HD	508
Golf Ch HD	558	WSMV (NBC-Nash) HD	504
Hallmark Movies HD	581	WTVF (CBS-Nash) HD	505
HD Net Movies	674	WZTV (FOX-Nash) HD	517
History Channel HD	590		

All your favorite **HD Channels** & hundreds of digital channels including WBKO News, The Golf Channel, ESPN, Food Network, Comedy Central, Disney, HBO & more.

**DVR Service** lets you record your favorite programming and watch it at your convenience.


**Smart Search Guide**, search by titles or names and see when your favorite show or star is on. Allows you to set up your favorite channels in your own guide directory.

**NEED  
SOME HELP**  
**270-726-2466**

support@epbnet.com

Follow us on  
**Twitter and Facebook**

 @epbnet

 Russellville EPB

THE POWER TO DO MORE

**EPB  
SmartTV3**  
Logan County's Own Exclusive Network

**New Power Play Package**

**EPB smartnet gives you  
the power to have more.**

**Premium Data -**

50 Mb Speed

**Premium Phone -**

Caller ID, Call Waiting & Return & Forwarding

**Premium TV -**

249 Channels Plus access to nearly  
80 HD CHANNELS

**\$137.95**

Channels in bold are some of our  
most popular channels.

Channel line up subject to change.



Menu

270-726-2466 • Mon - Fri: 7:30 a.m. - 4:00 p.m.

[EPB CUSTOMER PORTAL \(HTTPS://PORTAL.EPBNET.COM/\)](https://portal.epbnet.com/) [EMAIL LOGIN \(HTTP://EMAIL.EPBNET.COM/\)](http://email.epbnet.com/) [BILL PAY \(HTTP://WWW.EPBNET.COM/INDEX.PHP/SUPPORT/BILL-PAY\)](http://www.epbnet.com/index.php/support/bill-pay)[FOR YOUR BUSINESS \(HTTP://WWW.EPBNET.COM/INDEX.PHP/YOUR-BUSINESS\)](http://www.epbnet.com/index.php/your-business)[FOR YOUR HOME \(HTTP://WWW.EPBNET.COM/INDEX.PHP/NEW-CUSTOMERS\)](http://www.epbnet.com/index.php/new-customers)[\(https://www.facebook.com/pages/Russellville-Electric-Plant-Board/394461970579030/\)](https://www.facebook.com/pages/Russellville-Electric-Plant-Board/394461970579030/) [\(https://twitter.com/epbnet\)](https://twitter.com/epbnet)

## RESIDENTIAL TV

# Essential

# \$37.95



40 channels including all of the Bowling Green and Nashville stations

One standard set top box is included with EPBSmartnet TV. Each additional TV requires a set top box and lease for \$5.50/month.

DVR set top boxes are available for only \$12/month.

HD Service is available for only \$7.95 per month. (Essential – 19 channels, Elite – 78 channels and Extreme – 89 channels)

Price Sheet ([http://epbnet.com/files/1814/5635/3157/pricing\\_\\_Residential11-09.pdf](http://epbnet.com/files/1814/5635/3157/pricing__Residential11-09.pdf))

[INTERACTIVE PROGRAM GUIDE \(HTTP://TVLISTINGS.ZAP2IT.COM/TVLISTINGS/ZCGRID.DO?  
METHOD=DECIDEFWDFORLINEUP&ZIPCODE=42276&SETMYPREFERENCE=FALSE&LINEUPID=KY69648:X\)](http://TVLISTINGS.ZAP2IT.COM/TVLISTINGS/ZCGRID.DO?METHOD=DECIDEFWDFORLINEUP&ZIPCODE=42276&SETMYPREFERENCE=FALSE&LINEUPID=KY69648:X)

[CHANNEL LINEUP BROCHURE \(HTTP://EPBNET.COM/FILES/5614/8310/9350/EPBBROCHURE.PDF\)](http://EPBNET.COM/FILES/5614/8310/9350/EPBBROCHURE.PDF)

[LEARN MORE \(/INDEX.PHP/CONTACT/\)](/index.php/contact/)

---

## Elite



# \$64.95

## 112 video and 41 music channels

One standard set top box is included with EPB Smartnet TV. Each additional TV requires a set top box and lease for \$5.50/month.

DVR set top boxes are available for only \$12/month.

HD Service is available for only \$7.95 per month. (Essential – 19 channels, Elite – 78 channels and Extreme – 89 channels)

Price Sheet ([http://epbnet.com/files/1814/5635/3157/pricing\\_\\_Residential11-09.pdf](http://epbnet.com/files/1814/5635/3157/pricing__Residential11-09.pdf))

*INTERACTIVE PROGRAM GUIDE ([HTTP://TVLISTINGS.ZAP2IT.COM/TVLISTINGS/ZCGRID.DO?METHOD=DECIDEFWDFORLINEUP&ZIPCODE=42276&SETMYPREFERENCE=FALSE&LINEUPID=KY69648:X](http://TVLISTINGS.ZAP2IT.COM/TVLISTINGS/ZCGRID.DO?METHOD=DECIDEFWDFORLINEUP&ZIPCODE=42276&SETMYPREFERENCE=FALSE&LINEUPID=KY69648:X))*

*CHANNEL LINEUP BROCHURE ([HTTP://EPBNET.COM/FILES/5614/8310/9350/EPBBROCHURE.PDF](http://EPBNET.COM/FILES/5614/8310/9350/EPBBROCHURE.PDF))*

[LEARN MORE \(/INDEX.PHP/CONTACT/\)](#)

---

## Extreme

# \$74.95

## 141 video and 41 music channels

One standard set top box is included with EPB Smartnet TV. Each additional TV requires a set top box and lease for \$5.50/month.

DVR set top boxes are available for only \$12/month.

HD Service is available for only \$7.95 per month. (Essential – 19 channels, Elite – 78 channels and Extreme – 89 channels)

Price Sheet ([http://epbnet.com/files/1814/5635/3157/pricing\\_\\_Residential11-09.pdf](http://epbnet.com/files/1814/5635/3157/pricing__Residential11-09.pdf))

*INTERACTIVE PROGRAM GUIDE ([HTTP://TVLISTINGS.ZAP2IT.COM/TVLISTINGS/ZCGRID.DO?METHOD=DECIDEFWDFORLINEUP&ZIPCODE=42276&SETMYPREFERENCE=FALSE&LINEUPID=KY69648:X](http://TVLISTINGS.ZAP2IT.COM/TVLISTINGS/ZCGRID.DO?METHOD=DECIDEFWDFORLINEUP&ZIPCODE=42276&SETMYPREFERENCE=FALSE&LINEUPID=KY69648:X))*

*CHANNEL LINEUP BROCHURE ([HTTP://EPBNET.COM/FILES/5614/8310/9350/EPBBROCHURE.PDF](http://EPBNET.COM/FILES/5614/8310/9350/EPBBROCHURE.PDF))*

[LEARN MORE \(/INDEX.PHP/CONTACT/\)](#)

---

## NAVIGATION

[Residential TV \(/index.php/tv/residential-tv/\)](#)

[Commercial TV \(/index.php/tv/commercial-tv/\)](#)

[Power Play Package \(/index.php/tv/triple-play/\)](#)

[Policies \(/index.php/tv/policies/\)](#)



# Customer Support

## 270-726-2466



### REPORT AN OUTAGE — 270-726-2466

*In the event of an after hours outage or service issue, please call*

*270-726-2466 and press 1 for the Electric Department*

*or press 2 for our Telecom Department.*

#### [ELECTRIC \(/INDEX.PHP/ELECTRIC/\)](/index.php/electric/)

[NEW CUSTOMERS \(/INDEX.PHP/ELECTRIC/NEW-CUSTOMERS/\)](/index.php/electric/new-customers/)  
[REPORT AN OUTAGE \(/INDEX.PHP/ELECTRIC/REPORT-OUTAGE/\)](/index.php/electric/report-outage/)  
[DISCONNECT SERVICE \(/INDEX.PHP/ELECTRIC/DISCONNECT-SERVICE/\)](/index.php/electric/disconnect-service/)  
[POLICIES \(/INDEX.PHP/ELECTRIC/POLICIES/\)](/index.php/electric/policies/)

#### [INTERNET \(/INDEX.PHP/INTERNET/\)](/index.php/internet/)

[RESIDENTIAL INTERNET \(/INDEX.PHP/INTERNET/RESIDENTIAL-INTERNET/\)](/index.php/internet/residential-internet/)  
[COMMERCIAL INTERNET \(/INDEX.PHP/INTERNET/COMMERCIAL-INTERNET/\)](/index.php/internet/commercial-internet/)  
[POWER PLAY PACKAGE \(/INDEX.PHP/INTERNET/TRIPLE-PLAY/\)](/index.php/internet/triple-play/)  
[POLICIES \(/INDEX.PHP/INTERNET/POLICIES/\)](/index.php/internet/policies/)

#### [VOICE \(/INDEX.PHP/VOICE/\)](/index.php/voice/)

[RESIDENTIAL PHONE \(/INDEX.PHP/VOICE/RESIDENTIAL-PHONE/\)](/index.php/voice/residential-phone/)  
[COMMERCIAL PHONE \(/INDEX.PHP/VOICE/COMMERCIAL-PHONE/\)](/index.php/voice/commercial-phone/)  
[POWER PLAY PACKAGE \(/INDEX.PHP/VOICE/TRIPLE-PLAY/\)](/index.php/voice/triple-play/)  
[POLICIES \(/INDEX.PHP/VOICE/POLICIES/\)](/index.php/voice/policies/)

#### [TV \(/INDEX.PHP/TV/\)](/index.php/tv/)

[RESIDENTIAL TV \(/INDEX.PHP/TV/RESIDENTIAL-TV/\)](/index.php/tv/residential-tv/)  
[COMMERCIAL TV \(/INDEX.PHP/TV/COMMERCIAL-TV/\)](/index.php/tv/commercial-tv/)  
[POWER PLAY PACKAGE \(/INDEX.PHP/TV/TRIPLE-PLAY/\)](/index.php/tv/triple-play/)  
[POLICIES \(/INDEX.PHP/TV/POLICIES/\)](/index.php/tv/policies/)

#### [SUPPORT \(/INDEX.PHP/SUPPORT/\)](/index.php/support/)

[REPORT AN INTERNET OUTAGE \(/INDEX.PHP/SUPPORT/REPORT-OUTAGE/\)](/index.php/support/report-outage/)  
[REPORT AN ELECTRIC OUTAGE \(/INDEX.PHP/SUPPORT/REPORT-OUTAGE1/\)](/index.php/support/report-outage1/)  
[SPEED TEST \(HTTP://EPBNET.SPEEDTEST.NET/\)](http://epbnet.speedtest.net/)  
[BILL PAY \(/INDEX.PHP/SUPPORT/BILL-PAY/\)](/index.php/support/bill-pay/)

#### [ABOUT US \(/INDEX.PHP/ABOUT/\)](/index.php/about/)

[HISTORY \(/INDEX.PHP/ABOUT/HISTORY/\)](/index.php/about/history/)  
[BOARD MEMBERS \(/INDEX.PHP/ABOUT/BOARD-MEMBERS/\)](/index.php/about/board-members/)  
[EMPLOYEES \(/INDEX.PHP/ABOUT/MISSION/\)](/index.php/about/mission/)  
[NEWS \(/INDEX.PHP/ABOUT/BLOG/\)](/index.php/about/blog/)  
[TESTIMONIALS \(/INDEX.PHP/ABOUT/TESTIMONIALS/\)](/index.php/about/testimonials/)

#### [VIDEOS \(/INDEX.PHP/VIDEO/\)](/index.php/videos/)

#### [CONTACT \(/INDEX.PHP/CONTACT/\)](/index.php/contact/)

[REPORT AN INTERNET OUTAGE \(/INDEX.PHP/CONTACT/REPORT-OUTAGE/\)](/index.php/contact/report-outage/)  
[REPORT AN ELECTRIC OUTAGE \(/INDEX.PHP/CONTACT/REPORT-OUTAGE1/\)](/index.php/contact/report-outage1/)  
[KEY CONTACTS \(/INDEX.PHP/CONTACT/KEY-CONTACTS/\)](/index.php/contact/key-contacts/)

[\(/index.php/download\\_file/view/24/214/\) Download TV Manual](/index.php/download_file/view/24/214/)

[\(http://www.epbnet.com/index.php/download\\_file/86/\) | Need Support?](http://www.epbnet.com/index.php/download_file/86/)

[\(http://www.epbnet.com/index.php/contact\) | Get Energy Tips](http://www.epbnet.com/index.php/contact)

[\(http://www.epbnet.com/index.php/electric/energy-tips\)](http://www.epbnet.com/index.php/electric/energy-tips)

## **Exhibit 4**

**(News Articles and Social Media Postings  
Related to WBKO Carriage by EPB Russellville)**



## EPB of Russellville

Home

About

Photos

Events

Reviews

Videos

Posts

Community

Create a Page

Like Share ...



**EPB of Russellville**

December 8, 2016

~Notice of Programming Change~

Effective January 1, 2017, Russellville Electric Plant Board (REPB) will no longer be permitted to carry the NBC and CBS network programming of WNKY-TV from Bowling Green, KY due to restrictions by that station's networks. Cable operators, such as REPB, are only permitted to carry a broadcast television station with that station's consent, and REPB's consent agreement to carry WNKY terminates at the end of this year. The NBC and CBS network affiliation agreements that WNKY has with those networks now prohibit WNKY from granting REPB permission to carry its network programming after December 31, 2016. As a result, REPB will discontinue carriage of the WNKY station on Friday December 30, 2016. REPB will continue to carry WSMV- NBC and WTVF-CBS from Nashville, TN.

Like Comment

Top Comments



**Mike Wilson** What about WBKO?

1 · December 8, 2016 at 9:33am



**EPB of Russellville** As of now WBKO will still be on.

December 8, 2016 at 2:33pm

Contact Us

Message



Media/News Company



**Freebie Mom**

Personal Blog



**WBKO Television**

TV Channel

Pages liked by this Page



**The Following**



**News-Democrat & Leader**



**Logan Memorial Hospital**

Places ▸ Russellville, Kentucky ▸ EPB of

# News-Democrat & LEADER (/)

Jobs (<http://KYjobs.civitasmedia.com>)

Classifieds (</classifieds>)    Subscribe

(</subscribe>)    E-Edition

(<http://newsdemocratleader.ky.newsmemory.com/>)

Apps: Android

([https://play.google.com/store/apps/details?](https://play.google.com/store/apps/details?id=com.verviewireless.droid.newsdemleader)

[id=com.verviewireless.droid.newsdemleader](https://play.google.com/store/apps/details?id=com.verviewireless.droid.newsdemleader))

iPhone/iPad

([https://itunes.apple.com/us/app/the-news-](https://itunes.apple.com/us/app/the-news-democrat-leader/id1047309894?mt=8)

[democrat-leader/id1047309894?mt=8](https://itunes.apple.com/us/app/the-news-democrat-leader/id1047309894?mt=8))



HOME ([HTTP://NEWSDEMOCRATLEADER.COM](http://newsdemocratleader.com))

NEWS ([HTTP://WWW.NEWSDEMOCRATLEADER.COM/CATEGORY/NEWS](http://www.newsdemocratleader.com/category/news))

SPORTS ([HTTP://WWW.NEWSDEMOCRATLEADER.COM/CATEGORY/SPORTS](http://www.newsdemocratleader.com/category/sports))

OBITUARIES ([HTTP://WWW.LEGACY.COM/OBITUARIES/NEWSDEMOCRATLEADER](http://www.legacy.com/obituaries/newsdemocratleader))

OPINION ([HTTP://WWW.NEWSDEMOCRATLEADER.COM/CATEGORY/OPINION](http://www.newsdemocratleader.com/category/opinion))

FEATURES ([HTTP://WWW.NEWSDEMOCRATLEADER.COM/CATEGORY/FEATURES](http://www.newsdemocratleader.com/category/features))

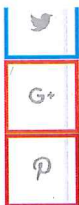
CALENDAR ([HTTP://WWW.NEWSDEMOCRATLEADER.COM/CALENDAR](http://www.newsdemocratleader.com/calendar))

ENTERTAINMENT ([HTTP://WWW.NEWSDEMOCRATLEADER.COM/ENTERTAINMENT](http://www.newsdemocratleader.com/entertainment))

BUSINESSES ([HTTP://LOCAL.NEWSDEMOCRATLEADER.COM](http://local.newsdemocratleader.com))







# EPB forced to drop Bowling Green stations

NEWS ([HTTP://WWW.NEWSDEMOCRATLEADER.COM/CATEGORY/NEWS](http://www.newsdemocratleader.com/category/news))

By OJ Stapleton - [ostapleton@newsdemocratleader.com](mailto:ostapleton@newsdemocratleader.com)

If you get your television service from the Russellville Electric Plant Board, you won't have NBC and CBS stations from Bowling Green for much longer.

The EPB announced yesterday that effective January 1, 2017, it will no longer be permitted to carry the NBC and CBS network programming of WNKY-TV from Bowling Green due to restrictions by that station's networks.

According to their announcement, "Cable operators, such as REPB, are only permitted to carry a broadcast television station with that station's consent, and REPB's consent agreement to carry WNKY terminates at the end of this year. The NBC and CBS network affiliation agreements that WNKY has with those networks now prohibit WNKY from granting REPB permission to carry its network programming after December 31, 2016. As a result, REPB will discontinue carriage of the WNKY station on Friday December 30, 2016. REPB will continue to carry WSMV- NBC and WTVF- CBS from Nashville."

**Top Searches** | [Flooding At Fourth And \(\)](#) [Shooting \(\)](#) [Mayor \(\)](#) [Keving \(\)](#)

The reason behind the change is because Russellville falls within the Nashville DMA (or designated market area) according to the FCC.

The Electric Plant Board began offering cable television service in 2011, but recent developments with the DMA have caused the EPB to not be able to offer as much programming from nearby Bowling Green.

Last year the EPB had to stop offering WBKO on a full-time basis because of a similar situation. Currently, the EPB broadcasts WBKO during the hours when its local news programs air, but the rest of the time it is switched over to the Nashville ABC affiliate.

To contact OJ Stapleton, email [ostapleton@newsdemocratleader.com](mailto:ostapleton@newsdemocratleader.com) or call 270-726-8394.

## RECOMMENDED FOR YOU

68°

12:55 pm CDT

Cloudy

(<http://newsdemocratleader.com/weather>)

AdChoices

(http://www.aceweather.com/en/ree-wheat-her-widdets)

LEARN ABOUT LYRICA

LYRICA is only approved for adults over 18

**SCROLL FOR IMPORTANT SAFETY INFORMATION AND Important Safety Information**

**LYRICA is not for everyone.** LYRICA may cause serious, even life threatening, allergic reactions. Stop taking LYRICA and call your doctor right away if you have any signs of a serious allergic reaction (e.g., hives, difficulty breathing, swelling of the face, lips, tongue, or throat). See the Medication Guide and Full Prescribing Information for LYRICA.

## POLL

**Do you think President Trump has shown he is good at crisis management so far?**

- ☐ Yes
- ☐ No
- ☐ No opinion

Next

## NATIONAL VIDEO

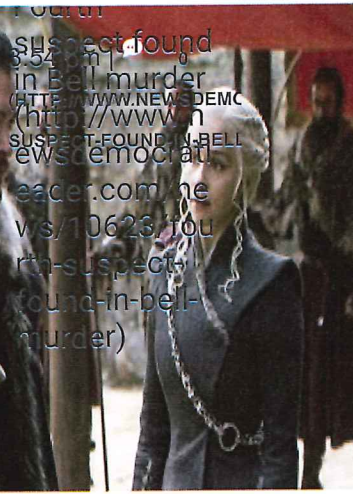




(http://www.newsdemocrat.com/news/10631/annual-red-river-meeting-house-and-cemetery-association-coming-up)



(http://www.newsdemocrat.com/news/10625/local-ems-travel-to-help-texas)



(http://www.newsdemocrat.com/news/10623/fourth-suspect-found-in-bell-murder)

More videos:



Sponsored

VEDDA BLOOD SUGAR REMEDY

### Diabetes Doctors Are Corrupt for Hiding This (Watch Video)

1 Strange Secret Resets Your Blood Pressure Permanently in 17 Days Without Medication!



[Learn More](#)

[Report ad](#)

Comments

Community

1 Login

Recommend 3

Share

Sort by Newest

Start the discussion...

LOG IN WITH

OR SIGN UP WITH DISQUS ?

Name

Be the first to comment.

Subscribe Add Disqus to your siteAdd DisqusAdd

Privacy

#StartAStoryAd  
theshelterpetproject

FIND A PET



Ad Council

United States

Animal Welfare

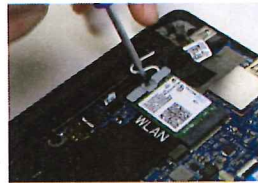
Sponsored

SMART WEB TIPS

## #1 Reason Your Identity Gets Stolen

You Won't Believe This Trick to Stop it!

[Learn More](#)



Report ad

comments powered by [Disqus \(http://disqus.com\)](http://disqus.com)

---

BOOKMARK THE PERMALINK

[/HTTP://WWW.NEWSDEMOCRATLEADER.COM/NEWS/7518/EPB-FORCED-TO-DROP-BOWLING-GREEN-STATIONS](http://www.newsdemocratleader.com/news/7518/EPB-FORCED-TO-DROP-BOWLING-GREEN-STATIONS)

PREVIOUS ([HTTP://WWW.NEWSDEMOCRATLEADER.COM/OPINION/7517/WHY-FAKE](http://www.newsdemocratleader.com/opinion/7517/WHY-FAKE)



(<http://civitasmedia.com>)  
Privacy Policy

Photo Store

(<http://NewsDemocratLeader.mycapture.com>)

Local Business Directory

(<http://local.newsdemocratleader.com>)



(<https://www.facebook.com/pages/News-Democrat-Leader/142008228626052>)



Advertise With Us  
(/advertise)

Get News  
Alerts

(/sign-up-for-notices)

270-726-8394 (tel:270-  
726-8394)

270-726-8398 (tel:270-  
726-8398)

120 Public Square,  
Russellville KY, 42276

Jobs (<http://KYjobs.civitasmedia.com>)

Classifieds (/classifieds)    Subscribe

(/subscribe)    E-Edition

(<http://newsdemocratleader.ky.newsmemory.com/>)

Apps: Android

([https://play.google.com/store/apps/details?](https://play.google.com/store/apps/details?id=com.verviewireless.droid.newsdemleader)

[id=com.verviewireless.droid.newsdemleader](https://play.google.com/store/apps/details?id=com.verviewireless.droid.newsdemleader))

iPhone/iPad

([https://itunes.apple.com/us/app/the-news-](https://itunes.apple.com/us/app/the-news-democrat-leader/id1047309894?mt=8)

[democrat-leader/id1047309894?mt=8](https://itunes.apple.com/us/app/the-news-democrat-leader/id1047309894?mt=8))



HOME ([HTTP://NEWSDEMOCRATLEADER.COM](http://newsdemocratleader.com))

NEWS ([HTTP://WWW.NEWSDEMOCRATLEADER.COM/CATEGORY/NEWS](http://www.newsdemocratleader.com/category/news))

SPORTS ([HTTP://WWW.NEWSDEMOCRATLEADER.COM/CATEGORY/SPORTS](http://www.newsdemocratleader.com/category/sports))

OBITUARIES ([HTTP://WWW.LEGACY.COM/OBITUARIES/NEWSDEMOCRATLEADER](http://www.legacy.com/obituaries/newsdemocratleader))

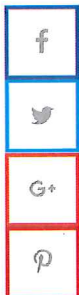
OPINION ([HTTP://WWW.NEWSDEMOCRATLEADER.COM/CATEGORY/OPINION](http://www.newsdemocratleader.com/category/opinion))

FEATURES ([HTTP://WWW.NEWSDEMOCRATLEADER.COM/CATEGORY/FEATURES](http://www.newsdemocratleader.com/category/features))

CALENDAR ([HTTP://WWW.NEWSDEMOCRATLEADER.COM/CALENDAR](http://www.newsdemocratleader.com/calendar))

ENTERTAINMENT ([HTTP://WWW.NEWSDEMOCRATLEADER.COM/ENTERTAINMENT](http://www.newsdemocratleader.com/entertainment))

BUSINESSES ([HTTP://LOCAL.NEWSDEMOCRATLEADER.COM](http://local.newsdemocratleader.com))





# Weather Plan

NEWS ([HTTP://WWW.NEWSDEMOCRATLEADER.COM/CATEGORY/NEWS](http://www.newsdemocratleader.com/category/news))

As the seasons finally begin to change, colder weather is upon us, which means that it is time to review our Inclement Weather Plan. As with any decision made, student safety has been and will continue to be our top priority. I believe that by being proactive and having a strong plan in place, we can ensure student safety and approach the winter season and colder temperatures with confidence. Please take some time to familiarize yourself with our procedures and communication options so that when the time comes, you too are prepared.

## "SNOW ALERT" Inclement Weather Plan

To Close or Not to Close — That is the Question

**Top Searches** | [Callie But \(\)](#) | [Geor \(\)](#) | [Chhad \(\)](#) | [Shooting \(\)](#) | [Jailja \(\)](#)

Any Superintendent or Transportation Director will tell you that one of his/her most difficult decisions is whether to close, delay, or open school on days of inclement weather. It is a difficult decision because it is based upon the probability of safely transporting our students. The process begins at 4:30 a.m. traveling the roads to check on conditions. During this time, district officials are in constant contact with law enforcement agencies, weather stations and other area superintendents and transportation directors for the latest update on the weather. We strive to make our decision no later than 5:30 a.m. in order to inform our district parents, students, and employees in a timely manner.

Because this decision is made rather early, there may be a need to make a revision later in the morning due to rapidly changing weather conditions. It is important for parents to continue checking television and radio stations after the initial announcement, in the event weather conditions dictate a change. Although we realize these decisions are subject to second-guessing, I ask that you remember all decisions are based solely upon the safety of our children, and we will always err on the side of caution.

## WHAT FACTORS GO INTO MAKING THE DECISION

### TO CLOSE/DELAY/EARLY DISMISS SCHOOL?

- Weather forecasts from radio and television stations
- Time when snow, ice or freezing rain is expected to start and end
- Predicted amount of snow, ice or freezing rain accumulation
- Weather conditions expected after the snow, ice or freezing rain

68°

12:32 pm CDT

Clouds and  
sun

(<http://newsdemocratleader.com/weather>)

(<http://seamfreeair.com>)  
s:// Cami  
www  
.acc  
uwe  
ather  
.com  
/en/f  
ree-  
weat  
her-  
widg  
ets)

## POLL

**Do you think President Trump has shown he is good at crisis management so far?**

☐ Yes

☐ No

☐ No opinion

Next

## NATIONAL VIDEO

- Assessments from multiple local, state and law enforcement agencies
- School district's assessment of school parking lot safety and accessibility of buildings
- Anticipated impact on traffic

## WHAT HAPPENS IF THE WEATHER BECOMES SEVERE

### DURING THE SCHOOL DAY?

Every effort is made to keep students in school through regular dismissal; however, it may become necessary to dismiss students earlier than normal to ensure their safe transport. School officials monitor weather conditions throughout the day in consultation with local weather officials, the Kentucky Department of Transportation, and various law enforcement officials.

### HOW CAN PARENTS BE READY?

Parents should always be prepared for an early dismissal by having an identified procedure for their child to follow in these situations.

### EMERGENCY CLOSING/DELAY INFORMATION SOURCES

Television – WBKO-TV (13), WKRN-TV (2), WSMV-TV (4), WTVF-TV (5),

Radio – WRUS AM 610, ONE CALL

We ask that parents and students do not telephone the schools or the district office for

information pertaining to the operation of schools on days of inclement weather. Due to limited

staffing in our offices, these calls may delay our ability to notify school staff and the public of

important information in a timely manner. The announcement of school closing and/or delay is

made on most of the local television and radio stations as soon as possible. I trust this

communication provides you with relevant information and allows you to better understand our

process to ensure your child's safety during inclement weather. Please share your questions with

our school principals or feel free to contact Russellville Schools Transportation



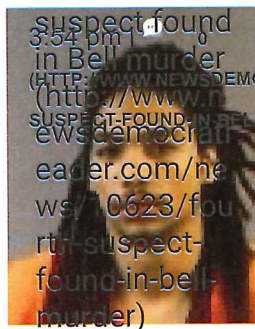
## RECOMMENDED FOR YOU



(http://www.newsdemocratleader.com/news/10631/annual-red-river-meeting-house-and-cemetery-association-coming-up)



(http://www.newsdemocratleader.com/news/10625/local-ems-travel-to-help-texas)



(http://www.newsdemocratleader.com/news/10623/fourth-suspect-found-in-bell-murder)

Sponsored

VEDDA BLOOD SUGAR REMEDY

**Diabetes Doctors Are Corrupt for Hiding This (Watch Video)**

1 Strange Secret Resets Your Blood Pressure Permanently in 17 Days Without Medication!



[Learn More](#)

[Report ad](#)

**Comments**

**Community**

**1 Login**

 **Recommend**

 **Share**

**Sort by Newest**

Start the discussion...

LOG IN WITH

OR SIGN UP WITH DISQUS 

Name

Be the first to comment.

 **Subscribe**  **Add Disqus to your site** **Add Disqus** **Add**

 **Privacy**



Sponsored

ETS GRE PROGRAM

## Tips for Applying to Business Schools Abroad



Do you have your sights set on a top-ranked business program in another country? You're not alone. Read this advice.

[Learn More](#)

comments powered by [Disqus \(http://disqus.com\)](http://disqus.com)

---

BOOKMARK THE [PERMALINK](#)

([HTTP://WWW.NEWSDEMOCRATLEADER.COM/NEWS/3182/WEATHER-PLAN](http://www.newsdemocratleader.com/news/3182/weather-plan)).

**PREVIOUS** ([HTTP://WWW.NEWSDEMOCRATLEADER.COM/NEWS/3181/MARQUECE-](http://www.newsdemocratleader.com/news/3181/marqueece)



(<http://civitasmedia.com>)

Privacy Policy

(<http://civitasmedia.com/privacy>)

Terms of Service

(<http://civitasmedia.com/terms>)

Advertise With Us

(/advertise)

Photo Store

(<http://NewsDemocratLeader.mycapture.com>)

Local Business Directory

(<http://local.newsdemocratleader.com>)

© 2017 Civitas Media



([https://www.facebook.com/pages/News-](https://www.facebook.com/pages/News-Democrat-Leader/113908328636952)

[Democrat-Leader/113908328636952](https://www.facebook.com/pages/News-Democrat-Leader/113908328636952))



(<http://twitter.com/NewsDemLeader>)

Get News  
Alerts

(/sign-up-for-notices)

270-726-8394 (tel:270-  
726-8394)

270-726-8398 (tel:270-  
726-8398)

120 Public Square,  
Russellville KY, 42276

## **Exhibit 5**

**(NCTC 2017 Channel Lineups and Information  
from <http://www.nctc.com/tv-service/>)**

# CHANNEL GUIDE

Tennessee Channel  
Guide

Kentucky Channel Guide

Search:

Package	Channel Number	Channel Title	Watch TV Everywhere Channel
Basic	1	NCTC Local Weather	
Basic	2	WKRN ABC Nashville	Yes
Basic	3	WAVE NBC Louisville	Yes
Basic	4	WSMV NBC Nashville	Yes
Basic	5	WTVF CBS Nashville	
Basic	6	NCTC KY Local	
Basic	7	News Ch 5+	
Basic	8	WNPT PBS Nashville	
Basic	9	QVC Home Shopping	Yes
Basic	10	HSN Home Shopping	
Basic	11	WHAS ABC Louisville	



Basic	13	WBKO ABC BG
Basic	14	WKGB KET1 BG
Basic	15	NCTC TN Local
Basic	17	FOX WZTV Nashville
Basic	24	WKYU PBS BG
Basic	27	WKYT CBS Lexington
Basic	28	WNPX ION Cookeville
Basic	30	WUXP MyNetworkTV



Basic	31	WBKO CW BG
Basic	32	WLKY CBS Louisville
Basic	36	INSP
Basic	38	THIS TV Nashville
Basic	39	WHTN Nashville
Basic	40	TBN
Basic	41	EWTN
Basic	46	WKGB KET 2
Basic	48	WPBM IND Scottsville
Basic	58	WNAB CW Nashville
Basic	59	RFD-TV Nashville
Basic	70	WGN
Basic	86	C-SPAN US House
Basic	87	C-SPAN II US Senate
Basic	96	Allen Co Schools
Basic	97	Macon Co Schools
Basic	98	Sumner Co Schools

Basic	130	Create	
Basic	131	COZ	
Basic	134	MeTV	
Deluxe	16	HLN	Yes
Deluxe	18	ESPN Classic	Yes
Deluxe	19	ESPN	Yes
Deluxe	20	ESPN2	Yes
Deluxe	21	ESPNEWS	Yes
Deluxe	22	ESPNU	Yes
Deluxe	25	Animal Planet	Yes
Deluxe	26	Freeform	Yes
Deluxe	29	TLC	Yes
Deluxe	33	A & E	Yes
Deluxe	34	History Channel	Yes
Deluxe	35	Travel Channel	Yes
Deluxe	37	GBN	
Deluxe	42	Lifetime	Yes
Deluxe	43	Lifetime Movie Network	Yes
Deluxe	44	Lifetime Real Women	
Deluxe	45	Hallmark	Yes
Deluxe	47	Oxygen	Yes
Deluxe	49	Boomerang	Yes
Deluxe	50	Cartoon Network	Yes
Deluxe	51	Disney Channel	Yes
Deluxe	52	Nickelodeon	Yes

Deluxe	54	Nick Jr.	Yes
Deluxe	55	Teen Nick	
Deluxe	56	Nicktoons	
Deluxe	57	TV Land	Yes
Deluxe	60	Disney Jr	Yes
Deluxe	62	E!	Yes
Deluxe	63	FS1	Yes
Deluxe	64	FXM	Yes
Deluxe	65	Hallmark Movie Channel	Yes
Deluxe	66	Chiller	
Deluxe	67	TBS	Yes
Deluxe	68	USA	Yes
Deluxe	69	BYU	
Deluxe	71	GSN	
Deluxe	72	Comedy Central	Yes
Deluxe	73	TNT	Yes
Deluxe	74	TCM	Yes
Deluxe	76	FX	Yes
Deluxe	77	BRAVO	Yes
Deluxe	78	Syfy	Yes
Deluxe	80	CNN	Yes
Deluxe	81	CNBC	Yes
Deluxe	83	MSNBC	Yes
Deluxe	84	Fox News Channel	Yes
Deluxe	85	Fox Business Channel	Yes




Deluxe	89	Discovery	Yes
Deluxe	90	OWN	
Deluxe	91	Discovery Family	Yes
Deluxe	92	Discovery Science	Yes
Deluxe	93	Destination America	Yes
Deluxe	94	Create	
Deluxe	100	FYI	Yes
Deluxe	101	Viceland	Yes
Deluxe	102	American Heroes Ch.	yes
Deluxe	103	Military History	
Deluxe	104	truTV	Yes
Deluxe	105	Crime & Investigation	
Deluxe	106	ID	Yes
Deluxe	107	Food Network	Yes
Deluxe	108	HGTV	Yes
Deluxe	109	DIY	Yes
Deluxe	111	Discovery Life	Yes
Deluxe	112	NatGeo	Yes
Deluxe	113	NatGeo Wild	Yes
Deluxe	114	FXX	Yes
Deluxe	115	MTV	Yes
Deluxe	116	MTV 2	Yes
Deluxe	117	MTV Hits	
Deluxe	118	MTV Jams	
Deluxe	119	VH1	Yes

Deluxe	121	VH1 Soul	Yes
Deluxe	122	BET	Yes
Deluxe	123	Gospel Music TV	
Deluxe	124	GAC	
Deluxe	125	CMT	Yes
Deluxe	126	CMT Pure Country	
Deluxe	127	TNN	Yes
Deluxe	132	Fusion	
Deluxe	133	Comet	
Deluxe	135	WZTV Antenna TV	
Deluxe	136	WKRN Justice TV	
Deluxe	140	WCTE Upper Cumberland PBS	
Deluxe	142	WCTE World	
Deluxe	150	NFL Network	Yes
Deluxe	151	Sportsman Channel	
Deluxe	152	Outdoor Channel	
Deluxe	153	NBC Sports Network	Yes
Deluxe	154	HRTV Horse Racing	
Deluxe	157	Fox College Sports PC	Yes
Deluxe	158	Fox College Sports CN	Yes
Deluxe	159	Fox College Sports AT	Yes
Deluxe	160	Fox Sports South South (KY)	Yes
Deluxe	161	Fox Sports South South (TN)	Yes
Deluxe	162	SportSouth	Yes
Deluxe	163	Fox Sports 1	Yes

Deluxe	165	SEC Network	Yes
Deluxe	165	SEC Network 2	Yes
Deluxe	168	ASN	
Music	902	Play	
Music	903	Hit List	
Music	904	Pop Rhythmic	
Music	905	Dance/EDM	
Music	906	Indie	
Music	907	Hip-Hop and R&B	
Music	908	Rap	
Music	909	Hip-Hop Classics	
Music	910	Throwback Jamz	
Music	911	R&B Classics	
Music	912	R&B Soul	
Music	913	Gospel	
Music	914	Reggae	
Music	915	Rock	
Music	916	Metal	
Music	917	Alternative	
Music	918	Adult Alternative	
Music	919	Rock Hits	
Music	920	Classic Rock	
Music	921	Soft Rock	
Music	922	Love Songs	
Music	923	Pop Hits	

Music	925	Teen
Music	926	Kidz Only
Music	927	Toddler Tunes
Music	928	Y2K
Music	929	90's
Music	930	80's
Music	931	70's
Music	932	Solid Golden Oldies
Music	933	Pop Country
Music	934	Today's Country
Music	935	Country Hits
Music	936	Classic Country
Music	937	Contemporary Christian
Music	938	Pop Latino
Music	939	Music Urbana
Music	940	Mexicana
Music	941	Tropicales
Music	942	Romances
Music	943	Sounds of the Season
Music	944	Stage and Screen
Music	945	Soundscapes
Music	946	Smooth Jazz
Music	947	Jazz
Music	948	Blues
Music	949	Singers and Swing

Music	951	Classical Masterpieces	
Music	952	Light Classical	
Standard HD	302	WKRN ABC HD	Yes
Standard HD	303	WAVE NBC HD	Yes
Standard HD	304	WSMV NBC HD	Yes
Standard HD	305	WTVF CBS HD	
Standard HD	308	WNPT PBS HD	
Standard HD	309	QVC HD	Yes
Standard HD	310	HSN HD	
Standard HD	311	WHAS ABC HD	
Standard HD	312	Weather Channel HD	
 Standard HD	313	WKBO ABC HD	
Standard HD	314	WKGB KET1 HD	
Standard HD	316	HLN HD	Yes
Standard HD	317	WZTV FOX HD	Yes
Standard HD	319	ESPN HD	Yes
Standard HD	320	ESPN2 HD	Yes
Standard HD	321	ESPNEWS HD	Yes
Standard HD	322	ESPNU HD	Yes
Standard HD	325	Animal Planet HD	Yes
Standard HD	326	FREE HD	Yes
Standard HD	329	TLC HD	Yes
Standard HD	330	My Network TV HD	
Standard HD	332	WLKY CBS HD	
Standard HD	333	A&E HD	Yes



Standard HD	335	Travel Channel HD	Yes
Standard HD	336	INSP HD	
Standard HD	342	Lifetime HD	Yes
Standard HD	343	Lifetime Movie HD	Yes
Standard HD	345	Hallmark HD	
Standard HD	350	Cartoon Network HD	Yes
Standard HD	351	Disney Channel HD	Yes
Standard HD	352	Nickelodeon HD	Yes
Standard HD	353	Disney XD HD	Yes
Standard HD	358	WNAB CW HD	
Standard HD	359	RFD HD	
Standard HD	360	Disney Jr HD	Yes
Standard HD	362	E! HD	Yes
Standard HD	363	Spike TV HD	Yes
Standard HD	364	FXM HD	Yes
Standard HD	365	Hallmark Movie Ch HD	Yes
Standard HD	367	TBS HD	Yes
Standard HD	368	USA HD	Yes
Standard HD	370	WGN America HD	
Standard HD	372	Comedy Central HD	Yes
Standard HD	373	TNT HD	Yes
Standard HD	374	TCM HD	Yes
Standard HD	376	FX HD	Yes
Standard HD	377	Bravo HD	Yes
Standard HD	378	Syfy HD	Yes

Standard HD	381	CNBC HD+	Yes
Standard HD	383	MSNBC HD	Yes
Standard HD	384	Fox News HD	Yes
Standard HD	385	Fox Business HD	Yes
Standard HD	389	Discovery HD	Yes
Standard HD	400	FYI HD	Yes
Standard HD	404	truTV HD	Yes
Standard HD	406	ID HD	Yes
Standard HD	407	Food Network HD	Yes
Standard HD	408	HGTV HD	Yes
Standard HD	409	DIY HD	Yes
Standard HD	410	WE HD	
Standard HD	412	NatGeo HD	Yes
Standard HD	413	NatGeo Wild HD	Yes
Standard HD	414	FXXHD	Yes
Standard HD	415	MTV HD	Yes
Standard HD	419	VH1 HD	Yes
Standard HD	425	CMT HD	Yes
Standard HD	440	WCTE HD	
Standard HD	450	NFL Network HD	Yes
Standard HD	452	Outdoor HD	
Standard HD	453	NBC SN HD	Yes
Standard HD	461	Fox Sports South HD	Yes
Standard HD	463	FS1 HD	Yes
Standard HD	462	Fox Sports1 HD	Yes

Standard HD	465	SEC Network HD	Yes
Standard HD	466	SEC Network 2 HD	Yes
Standard HD	561	Universal HD	
Standard HD	562	Velocity HD	Yes
Standard HD	563	AXSTV HD	
Standard HD	564	HDNet Movies	
Premium	200	HBO	
Premium	201	HBO Family	
Premium	202	HBO 2	
Premium	203	HBO Signature	
Premium	204	HBO Comedy	
Premium	205	HBO Zone	
Premium	210	Cinemax	
Premium	211	Moremax	
Premium	212	Actionmax	
Premium	213	Thrillermax	
Premium	220	Showtime	
Premium	221	SHO 2	
Premium	222	Showtime Showcase	
Premium	223	SHO Beyond	
Premium	224	SHO Extreme	
Premium	225	SHO Next	
Premium	226	Showtime Family Zone	
Premium	230	The Movie Channel	
Premium	231	The Movie Chan Extra	

Premium	240	Starz
Premium	241	Starz Kids & Family
Premium	242	Starz Edge
Premium	243	Starz in Black
Premium	244	Starz Cinema
Premium	245	Starz Comedy
Premium	250	Encore
Premium	251	Encore Westerns
Premium	252	Encore Action
Premium	253	Encore Love
Premium	254	Encore Drama
Premium	255	Encore Mystery
Premium	256	Encore Wam
Premium HD	500	HBO HD
Premium HD	501	HBO Family HD
Premium HD	502	HBO 2 HD
Premium HD	510	Cinemax HD
Premium HD	511	Moremax HD
Premium HD	512	Actionmax HD
Premium HD	520	Showtime HD
Premium HD	521	SHO2 HD
Premium HD	530	TMC HD
Premium HD	531	TMC XTRA HD
Premium HD	540	Starz HD
Premium HD	541	Starz Kids & Family HD



Premium HD	545	Starz Comedy HD
Premium HD	550	Encore HD
Pay Per View	801	INDEMAND PPV1
Pay Per View	802	INDEMAND PPV2

---

## CHANNEL REQUEST FORM

**Name \***

First

Last

**Email \***

**Channel you would like us to look into adding to our line-up:**

only one channel request per submission please

*Submit*

## Shop

- Home
- Business Services



## Services

- Bundles
- Home Phone
- Internet
- My Voice Mail
- Sign Up
- TV
- Video on Demand
- Watch TV Everywhere
- Whole Home DVR

## Contact

- Advertise With Us
- Call Before You Dig
- Careers
- Contact Us
- Customer Portal
- Remote Support

## Other Links

- [About Us](#)
- [Channel Guide](#)
- [Do Not Call List](#)
- [Live Cam](#)
- [TV Listings](#)
- [WiFi Hotspots](#)
- [Happenings/News](#)
- [Lifeline](#)
- [Speed Test](#)

Search

Search

©2017 NCTC | [Terms of Use](#) | [Policies](#) | Web Design by [The Johnson Group](#)



## **Exhibit 6**

**(Social Media Postings  
Related to WBKO Carriage by NCTC)**

NCTC Story - Home Ow x North Central (@NorthC x

Twitter, Inc. [US] | https://twitter.com/NorthCentralTel

Home Moments Search Twitter Have an account? Log in

**North Central** @NorthCentralTel · 9 Feb 2016  
I posted a new photo to Facebook [fb.me/1YdosZ4rl](https://fb.me/1YdosZ4rl)

**North Central** @NorthCentralTel · 8 Feb 2016  
Hello everyone! We have 2 new stories airing on NCTV this week. We hope you'll get a chance to watch. Here is... [fb.me/26MRV0gq2](https://fb.me/26MRV0gq2)

**North Central** @NorthCentralTel · 4 Feb 2016  
I posted a new photo to Facebook [fb.me/7MlrR3UcF](https://fb.me/7MlrR3UcF)

**North Central** @NorthCentralTel · 2 Feb 2016  
We just received word that WBKO will unblock their signal so Allen County customers can get local weather. Be safe, everyone!

**North Central** @NorthCentralTel · 2 Feb 2016  
We are all too familiar around here with what a tornado can do, so we want



NCTC Story - Home Own x North Central (@NorthC x

Twitter, Inc. [US] | https://twitter.com/NorthCentralTel

Home Moments Search Twitter Have an account? Log in

able to reach an agreement, and today is... [fb.me/4uWVqunIK](https://fb.me/4uWVqunIK)

1 1

**North Central** @NorthCentralTel · 28 Dec 2015  
NCTC was recently recognized by FCC Commissioner Jessica Rosenworcel for its efforts in bringing Gigabit speeds... [fb.me/7DMV2vM8f](https://fb.me/7DMV2vM8f)

1 1

**North Central** @NorthCentralTel · 23 Dec 2015  
Attention Kentucky TV subscribers: We received approval from the WBKO Station Manager to "unblock" KY Channel 13... [fb.me/7tD3UaS8b](https://fb.me/7tD3UaS8b)

1 1

**North Central** @NorthCentralTel · 21 Dec 2015  
Here is the Christmas Parade schedule this week on NCTV:  
Scottsville -- Channel 96 at 7pm  
Lafayette -- Channel... [fb.me/4Y071NvPF](https://fb.me/4Y071NvPF)

1 1

**North Central** @NorthCentralTel · 17 Dec 2015

NCTC Story - Home Ow... x North Central (@NorthC... x

Twitter, Inc. [US] | <https://twitter.com/NorthCentralTel>

Home Moments Search Twitter Have an account? Log in

chance to watch. Here is a sneak peek:... [fb.me/7QZj6lxA4](https://fb.me/7QZj6lxA4)

**North Central** @NorthCentralTel · 21 Jan 2016  
Help us find our Small Business of the Year! Nominate your favorite small business — even if it's your own — by... [fb.me/458KIk43U](https://fb.me/458KIk43U)

**North Central** @NorthCentralTel · 20 Jan 2016  
WBKO just notified us they will unblock the signal through Saturday so Kentucky TV subscribers can view any weather updates.

**North Central** @NorthCentralTel · 18 Jan 2016  
[fb.me/7CkPJJ1Iz](https://fb.me/7CkPJJ1Iz)

**North Central** @NorthCentralTel · 18 Jan 2016  
As a result of AMC Network's rate increase, NCTC will no longer carry AMC, BBC America, and WE, effective January... [fb.me/3X5UsV1Hg](https://fb.me/3X5UsV1Hg)

## **Exhibit 7**

**(Duo County Telecom 2017 Channel Lineups and Information  
from <https://duocounty.com/digital-tv>)**



# Channel Guide

CUMBERLAND COUNTY 2017

## DIGITAL CHANNELS

- 102 DU02, Local & Live Programming
- 103 WKYT (CBS) Lexington 27
- 105 KET
- 108 WKBI Louisville 34
- 109 WAVE (NBC) Louisville
- 110 WZTV - FOX 17
- 111 WHAS (ABC) Louisville 11
- 112 WLKY (CBS) Louisville
- 113 WBKO (ABC) Bowling Green 13\*
- 114 KET2
- 115 WGN (not in Lifeline package)
- 116 HSN
- 117 QVC
- 118 Trinity Broadcast Network
- 119 C-Span
- 120 Local Weather
- 123 ESPN
- 124 ESPN 2
- 125 ESPN Classic
- 126 A&E
- 127 USA
- 128 Lifetime
- 129 Lifetime Movie Network
- 130 TNT
- 131 SPIKE/TNN
- 132 Freeform
- 133 Disney Channel
- 134 CMT
- 135 CNN
- 136 CNN Headline News
- 137 FOX Sports Ohio
- 138 Syfy
- 139 The Discovery Channel
- 140 TBS
- 141 Bravo
- 142 The Learning Channel
- 143 Nickelodeon
- 144 Golf Channel
- 145 The Weather Channel
- 146 Animal Planet
- 147 VH-1
- 148 MTV
- 149 TV Land
- 150 Gospel Music Television
- 151 BET
- 152 The History Channel
- 153 Cartoon Network
- 154 Oxygen
- 155 OWN
- 157 truTV
- 158 Boomerang
- 159 FOOD Network
- 160 HGTV
- 161 ION
- 162 Comedy Central
- 163 FX
- 164 The Travel Channel
- 165 FOX News Channel
- 166 CNBC
- 167 RFD - TV
- 168 E! Entertainment TV
- 169 AMC
- 170 National Geographic
- 171 FXX
- 176 SEC Network
- 177 SECN2
- 180 The Outdoor Channel
- 181 NBC Sports Network
- 182 Disney Jr.
- 183 Do-It-Yourself
- 184 Nat Geo Wild

- 185 TV Games
- 186 Fox Sports 1
- 187 CSPAN 2
- 188 Hallmark Channel
- 189 Lifetime Real Women
- 190 Turner Classic Movies
- 192 MSNBC
- 193 ESPN News
- 194 ESPNU
- 195 HRTV
- 196 Hallmark Movies & Mysteries
- 197 Chiller
- 198 NFL Network
- 199 FOX Business News
- 300 Nick Jr
- 301 Teen Nick
- 302 Nick Too
- 303 Discovery Family Channel
- 304 Disney XD
- 305 Nicktoons Network
- 306 Destination America
- 307 Discovery Espanol
- 309 Game Show Network
- 310 BBC America
- 311 FYI
- 312 VICE
- 313 The Science Channel
- 314 ID
- 315 Discovery Fit & Health
- 316 Women's Entertainment
- 317 IFC
- 318 American Heroes Channel
- 319 Fuse
- 320 MTV2
- 321 BET Jams
- 322 MTV3
- 323 NICK Mix
- 324 CMT Music
- 325 MTV Classic
- 326 BET Soul
- 327 FX Movies
- 328 LOGO
- 329 GAC
- 346 Fusion
- 347 Sundance TV
- 348 BBC World News
- 351 WLKY32-MeTV
- 353 WZTV3
- 354 WZTV2
- 358 WYMO
- 361 WKYU PBS
- 362 KET KY
- 366 The Cowboy Channel
- 399 NFL RedZone\*\*

## HD CHANNELS

- 400 WKYT (CBS) Lexington 27 - HD
- 403 WZTV-FOX HD
- 404 WHAS (ABC) Louisville 11 - HD
- 405 TNT - HD
- 406 WLKY (CBS) Louisville 32 - HD
- 407 WAVE (NBC) Louisville 3 - HD
- 409 ESPN2 HDTV
- 410 ESPN HDTV
- 411 ESPNU HD
- 412 ESPN News HD
- 413 GOLF HD
- 414 NBC Sports Network HD
- 415 A&E HD
- 416 FOOD HD
- 417 TRAVEL HD
- 418 HGTV HD
- 419 HISTORY HD

- 420 DISCOVERY HD
- 421 ANIMAL PLANET HD
- 422 LEARNING CHANNEL HD
- 423 USA HD
- 424 FOX Sports Ohio HD
- 425 FOX NEWS HD
- 426 CNBC HD
- 427 DISNEY HD
- 428 Freeform HD
- 429 Syfy HD
- 430 Bravo HD
- 431 Outdoor Channel - HD
- 432 AMC - HD
- 433 FX HD
- 434 Lifetime HD
- 435 Lifetime Movie HD
- 436 E Entertainment TV HD
- 437 Spike TV HD
- 438 TBS HD
- 439 Fox Sports 1 HD
- 440 NFL Network HD
- 441 NFL RedZone HD\*\*
- 442 CMT HD
- 443 VHI HD
- 444 MTV HD
- 445 MSNBC HD
- 446 Fusion HD
- 447 Cartoon Network HD
- 448 Nickelodeon HD
- 458 Turner Classic Movies HD
- 459 DIY HD
- 450 TruTV HD
- 451 Comedy Central HD
- 452 TVLand HD
- 453 BET HD
- 454 CNN HD
- 455 HLN HD
- 456 FOX Business News HD
- 457 WGN HD
- 460 OWN
- 461 OXYGEN HD
- 462 FYI HD
- 463 RFD HD
- 464 C-Span HD
- 465 KET HD
- 466 The Cowboy Channel HD
- 471 FXX HD
- 476 SEC HD
- 477 SECN2 HD
- 478 National Geographic HD
- 479 ID HD
- 480 Science Channel HD
- 481 Destination America HD
- 482 Hallmark Mov HD
- 488 Hallmark Channel HD
- 490 AXS TV
- 492 Velocity - HD
- 499 Weather Channel HD
- 500 Local Weather Channel HD

## DIGITAL MUSIC

- 501 Hit List
- 502 Pop Rhythmic
- 503 Dance & EDM
- 504 MC Indie
- 505 Hip-Hop and R&B
- 506 Rap
- 507 Hip-Hop Classics
- 508 Throwback Jamz
- 509 R&B Classic
- 510 R&B Soul
- 511 Gospel
- 512 Reggae

- 513 Rock
- 514 Metal
- 515 Alternative
- 516 Adult Alternative
- 517 Rock Hits
- 518 Classic Rock
- 519 Soft Rock
- 520 Love Songs
- 521 Pop Hits
- 522 Party Favorites
- 523 Teen MC
- 524 Kidz Only
- 525 Toddler Tunes
- 526 Y2K
- 527 90's
- 528 80's
- 529 70's
- 530 Solid Gold Oldies
- 531 Pop Country
- 532 Today's Country
- 533 Country Hits
- 534 Classic Country
- 535 Contemporary Christian
- 536 Pop Latino
- 537 Musica Urbana
- 538 Mexicana
- 539 Tropicales
- 540 Romances
- 541 Sounds of the Seasons
- 542 Stage & Screen
- 543 Soundscapes
- 544 Smooth Jazz
- 545 Jazz
- 546 Blues

## HBO UNLIMITED

- 200 HBO
- 201 HBO Family
- 202 HBO Plus
- 203 HBO Signature
- 204 HBO Comedy
- 205 HBO Zone
- 206 HBO HDTV
- 207 HBO Latino

**BOLD** - indicates channels in the Digital Add-On package.

*ITALIC* - indicates channels in the Lifeline package.

Channels above 120 require digital box to view

## STARZ PACKAGE

- 240 STARZ
- 241 STARZ ENCORE Black
- 242 STARZ Kids & Family
- 243 STARZ Cinema
- 244 STARZ ENCORE
- 245 STARZ ENCORE Westerns
- 246 STARZ ENCORE Action
- 247 STARZ ENCORE True Stories
- 248 STARZ HD

## SHOWTIME UNLIMITED

- 220 Showtime
- 221 Showtime Too
- 222 Showtime Showcase
- 223 Showtime Beyond
- 224 Showtime Extreme
- 225 Showtime HDTV
- 230 The Movie Channel
- 231 The Movie Channel Xtra
- 232 The Movie Channel HD
- 235 Flix

## CINEMAX PACKAGE

- 210 Cinemax
- 211 MoreMax
- 212 ActionMax
- 213 ThrillerMax
- 214 Cinemax HDTV

## HDTV PAY PREMIUM TIER

- 491 HD-NET Movies
- 493 Universal - HD

## PPV PROGRAMMING

- 801-806 InDemand PPV
- 900-904 Adult

## VIDEO ON DEMAND

Using the VOD button on your remote allows you to choose from movies, local government, sporting, community events, plus 100's of FREE rentals.

221 Dohoney Trace  
Columbia, Kentucky 42728

270-433-2121  
www.duocounty.com



\*Louisville ABC programming will be substituted during prime time. \*\*NFL RedZone available by annual subscription of \$49.95.



# Channel Guide

ADAIR COUNTY 2017

## DIGITAL CHANNELS

102 DUO2, Local & Live Programming	185 TV Games	420 DISCOVERY HD	513 Rock	<b>STARZ PACKAGE</b>
103 WKYT (CBS) Lexington 27	186 Fox Sports 1	421 ANIMAL PLANET HD	514 Metal	240 STARZ
105 KET	187 CSPAN 2	422 LEARNING CHANNEL HD	515 Alternative	241 STARZ ENCORE Black
108 WBKI Louisville 34	188 Hallmark Channel	423 USA HD	516 Adult Alternative	242 STARZ Kids & Family
109 WAVE (NBC) Louisville	189 Lifetime Real Women	424 FOX Sports Ohio HD	517 Rock Hits	243 STARZ Cinema
110 WDRB (FOX) Louisville	190 Turner Classic Movies	425 FOX NEWS HD	518 Classic Rock	244 STARZ ENCORE
111 WHAS (ABC) Louisville 11	192 MSNBC	426 CNBC HD	519 Soft Rock	245 STARZ ENCORE Westerns
112 WLKY (CBS) Louisville	193 ESPN News	427 DISNEY HD	520 Love Songs	246 STARZ ENCORE Action
113 WBKO (ABC) Bowling Green 13*	194 ESPNU	428 Freeform HD	521 Pop Hits	247 STARZ ENCORE True Stories
114 KET2	195 HRTV	429 Syfy HD	522 Party Favorites	248 STARZ HD
115 WGN (Not in Lifeline package)	196 Hallmark Movies & Mysteries	430 Bravo HD	523 Teen MC	<b>SHOWTIME UNLIMITED</b>
116 HSN	197 Chiller	431 Outdoor Channel HD	524 Kidz Only	220 Showtime
117 QVC	198 NFL Network	432 AMC - HD	525 Toddler Tunes	221 Showtime Too
118 Trinity Broadcast Network	199 FOX Business News	433 FX HD	526 Y2K	222 Showtime Showcase
119 C-Span	300 Nick Jr	434 Lifetime HD	527 90's	223 Showtime Beyond
120 Local Weather	301 Teen Nick	435 Lifetime Movie HD	528 80's	224 Showtime Extreme
123 ESPN	302 Nick Too	436 E Entertainment TV HD	529 70's	225 Showtime HDTV
124 ESPN 2	303 Discovery Family Channel	437 Spike TV HD	530 Solid Gold Oldies	230 The Movie Channel
125 ESPN Classic	304 Disney XD	438 TBS HD	531 Pop Country	231 The Movie Channel Xtra
126 A&E	305 Nicktoons Network	439 Fox Sports 1 HD	532 Today's Country	232 The Movie Channel HD
127 USA	306 Destination America	440 NFL Network HD	533 Country Hits	235 Flix
128 Lifetime	307 Discovery Espanol	441 NFL RedZone HD**	534 Classic Country	<b>CINEMAX PACKAGE</b>
129 Lifetime Movie Network	309 Game Show Network	442 CMT HD	535 Contemporary Christian	210 Cinemax
130 TNT	310 BBC America	443 VHI HD	536 Pop Latino	211 MoreMax
131 SPIKE/TNN	311 FYI	444 MTV HD	537 Musica Urbana	212 ActionMax
132 Freeform	312 VICE	445 MSNBC HD	538 Mexicana	213 ThrillerMax
133 Disney Channel	313 The Science Channel	446 Fusion HD	539 Tropicales	214 Cinemax HDTV
134 CMT	314 ID	447 Cartoon Network HD	540 Romances	<b>HDTV PAY PREMIUM TIER</b>
135 CNN	315 Discovery Fit & Health	448 Nickelodeon HD	541 Sounds of the Seasons	491 HD-NET Movies
136 CNN Headline News	316 Women's Entertainment	450 TruTV HD	542 Stage & Screen	493 Universal - HD
137 FOX Sports Ohio	317 IFC	451 Comedy Central HD	543 Soundscapes	<b>PPV PROGRAMMING</b>
138 Syfy	318 American Heroes Channel	452 TVLand HD	544 Smooth Jazz	801-806 InDemand PPV
139 The Discovery Channel	319 Fuse	453 BET HD	545 Jazz	900-904 Adult
140 TBS	320 MTV2	454 CNN HD	546 Blues	<b>VIDEO ON DEMAND</b>
141 Bravo	321 BET Jams	455 HLN HD	<b>HBO UNLIMITED</b>	Using the VOD button on your
142 The Learning Channel	322 MTV3	456 FOX Business News HD	200 HBO	remote allows you to choose from
143 Nickelodeon	323 NICK Mix	457 WGN HD	201 HBO Family	movies, local government, sport-
144 Golf Channel	324 CMT Music	458 Turner Classic Movies HD	202 HBO Plus	ing, community events, plus 100's
145 The Weather Channel	325 MTV Classic	459 DIY HD	203 HBO Signature	of FREE rentals.
146 Animal Planet	326 BET Soul	460 OWN	204 HBO Comedy	
147 VH-1	327 FX Movies	461 OXYGEN HD	205 HBO Zone	
148 MTV	328 LOGO	462 FYI HD	206 HBO HDTV	
149 TV Land	329 GAC	463 RFD HD	207 HBO Latino	
150 Gospel Music Television	346 Fusion	464 C-Span HD		
151 BET	347 Sundance TV	465 KET HD		
152 The History Channel	348 BBC World News	466 The Cowboy Channel HD		
153 Cartoon Network	351 WLKY32-MeTV	471 FXX HD	<b>BOLD</b> - indicates channels in the Digital Add-On package.	
154 Oxygen	354 Russell Local & Live	476 SEC HD	<i>ITALIC</i> - indicates channels in the Lifeline package.	
155 OWN	358 WYMO	477 SECN2 HD	Channels above 120 require digital box to view	
157 truTV	361 WKYU PBS	478 National Geographic HD		
158 Boomerang	362 KET KY	479 ID HD		
159 FOOD Network	366 The Cowboy Channel	480 Science Channel HD		
160 HGTV	399 NFL RedZone**	481 Destination America HD		
161 ION	<b>HD CHANNELS</b>	482 Hallmark Mov HD		
162 Comedy Central	400 WKYT (CBS) Lexington 27 - HD	483 Sundance TV HD		
163 FX	403 WDRB (FOX) Louisville 41 - HD	488 Hallmark Channel HD		
164 The Travel Channel	404 WHAS (ABC) Louisville 11 - HD	490 AXS TV		
165 FOX News Channel	405 TNT - HD	492 Velocity - HD		
166 CNBC	406 WLKY (CBS) Louisville 32 - HD	499 Weather Channel HD		
167 RFD - TV	407 WAVE (NBC) Louisville 3 - HD	500 Local Weather Channel HD		
168 E! Entertainment TV	408 Duo2 HD	<b>DIGITAL MUSIC</b>		
169 AMC	409 ESPN2 HDTV	501 Hit List		
170 National Geographic	410 ESPN HDTV	502 Pop Rhythmic		
171 FXX	411 ESPNU HD	503 Dance & EDM		
176 SEC Network	412 ESPN News HD	504 MC Indie		
177 SECN2	413 GOLF HD	505 Hip-Hop and R&B		
180 The Outdoor Channel	414 NBC Sports Network HD	506 Rap		
181 NBC Sports Network	415 A&E HD	507 Hip-Hop Classics		
182 Disney Jr.	416 FOOD HD	508 Throwback Jamz		
183 Do-It-Yourself	417 TRAVEL HD	509 R&B Classic		
184 Nat Geo Wild	418 HGTV HD	510 R&B Soul		
	419 HISTORY HD	511 Gospel		
		512 Reggae		

\*Louisville ABC programming will be substituted during prime time. \*\*NFL RedZone available by annual subscription of \$49.95.

221 Dohoney Trace  
Columbia, Kentucky 42728

270-378-4141  
www.duocounty.com





# Channel Guide

RUSSELL COUNTY 2017

## DIGITAL CHANNELS

102 <b>DUO2, Local &amp; Live Programming</b>	185 <b>TV Games</b>	415 A&E HD	507 <b>Hip-Hop Classics</b>	<b>STARZ PACKAGE</b>
103 <b>WKYT (CBS) Lexington 27</b>	186 Fox Sports 1	416 FOOD HD	508 <b>Throwback Jamz</b>	240 STARZ
104 <b>WLEX (NBC) Lexington 18</b>	187 <b>CSPAN 2</b>	417 TRAVEL HD	509 <b>R&amp;B Classic</b>	241 STARZ ENCORE Black
105 <b>KET</b>	188 <b>Hallmark Channel</b>	418 HGTV HD	510 <b>R&amp;B Soul</b>	242 STARZ Kids & Family
106 <b>WTVQ (ABC) Lexington 36</b>	189 <b>Lifetime Real Women</b>	419 HISTORY HD	511 <b>Gospel</b>	243 STARZ Cinema
107 <b>WDKY (FOX) Danville 56</b>	190 <b>Turner Movie Classics</b>	420 DISCOVERY HD	512 <b>Reggae</b>	244 STARZ ENCORE
108 <b>WBKI Louisville 34</b>	192 <b>MSNBC</b>	421 ANIMAL PLANET HD	513 <b>Rock</b>	245 STARZ ENCORE Westerns
109 <b>WAVE (NBC) Louisville</b>	193 <b>ESPN News</b>	422 LEARNING CHANNEL HD	514 <b>Metal</b>	246 STARZ ENCORE Action
112 <b>WLKY (CBS) Louisville</b>	194 <b>ESPNU</b>	423 USA HD	515 <b>Alternative</b>	247 STARZ ENCORE True Stories
113 <b>WBKO (ABC) Bowling Green 13*</b>	195 <b>HRTV</b>	424 FOX Sports Ohio HD	516 <b>Adult Alternative</b>	248 STARZ HD
114 <b>KET2</b>	196 <b>Hallmark Movies &amp; Mysteries</b>	425 FOX NEWS HD	517 <b>Rock Hits</b>	<b>SHOWTIME UNLIMITED</b>
115 <b>WGN (not in Lifeline package)</b>	197 <b>Chiller</b>	426 CNBC HD	518 <b>Classic Rock</b>	220 Showtime
116 <b>HSN</b>	198 <b>NFL Network</b>	427 DISNEY HD	519 <b>Soft Rock</b>	221 Showtime Too
117 <b>QVC</b>	199 <b>FOX Business News</b>	428 Freeform HD	520 <b>Love Songs</b>	222 Showtime Showcase
118 <b>Trinity Broadcast Network</b>	300 <b>Nick Jr</b>	429 Syfy HD	521 <b>Pop Hits</b>	223 Showtime Beyond
119 <b>C-Span</b>	301 <b>Teen Nick</b>	430 Bravo HD	522 <b>Party Favorites</b>	224 Showtime Extreme
120 <b>Local Weather</b>	302 <b>Nick Too</b>	431 <b>Outdoor Channel - HD</b>	523 <b>Teen MC</b>	225 Showtime HDTV
123 <b>ESPN</b>	303 <b>Discovery Family Channel</b>	432 <b>AMC - HD</b>	524 <b>Kidz Only</b>	230 The Movie Channel
124 <b>ESPN 2</b>	304 <b>Disney XD</b>	433 <b>FX HD</b>	525 <b>Toddler Tunes</b>	231 The Movie Channel Xtra
125 <b>ESPN Classic</b>	305 <b>Nicktoons Network</b>	434 <b>Lifetime HD</b>	526 <b>Y2K</b>	232 The Movie Channel HD
126 <b>A&amp;E</b>	306 <b>Destination America</b>	435 <b>Lifetime Movie HD</b>	527 <b>90's</b>	235 Flix
127 <b>USA</b>	307 <b>Discovery Espanol</b>	436 <b>E Entertainment TV HD</b>	528 <b>80's</b>	<b>CINEMAX PACKAGE</b>
128 <b>Lifetime</b>	309 <b>Game Show Network</b>	437 <b>Spike TV HD</b>	529 <b>70's</b>	210 Cinemax
129 <b>Lifetime Movie Network</b>	310 <b>BBC America</b>	438 <b>TBS HD</b>	530 <b>Solid Gold Oldies</b>	211 MoreMax
130 <b>TNT</b>	311 <b>FYI</b>	439 <b>Fox Sports 1 HD</b>	531 <b>Pop Country</b>	212 ActionMax
131 <b>SPIKE/TNN</b>	312 <b>VICE</b>	440 <b>NFL Network HD</b>	532 <b>Today's Country</b>	213 ThrillerMax
132 <b>Freeform</b>	313 <b>The Science Channel</b>	441 <b>NFL RedZone HD**</b>	533 <b>Country Hits</b>	214 Cinemax HDTV
133 <b>Disney Channel</b>	314 <b>ID</b>	442 <b>CMT HD</b>	534 <b>Classic Country</b>	<b>HDTV PAY PREMIUM TIER</b>
134 <b>CMT</b>	315 <b>Discovery Fit &amp; Health</b>	443 <b>VHI HD</b>	535 <b>Contemporary Christian</b>	491 HD-NET Movies
135 <b>CNN</b>	316 <b>Women's Entertainment</b>	444 <b>MTV HD</b>	536 <b>Pop Latino</b>	493 Universal - HD
136 <b>CNN Headline News</b>	317 <b>IFC</b>	445 <b>MSNBC HD</b>	537 <b>Musica Urbana</b>	<b>PPV PROGRAMMING</b>
137 <b>FOX Sports Ohio</b>	318 <b>American Heroes Channel</b>	446 <b>Fusion HD</b>	538 <b>Mexicana</b>	801-806 InDemand PPV
138 <b>Syfy</b>	319 <b>FUSE</b>	447 <b>Cartoon Network HD</b>	539 <b>Tropicales</b>	900-904 Adult
139 <b>The Discovery Channel</b>	320 <b>MTV2</b>	448 <b>Nickelodeon HD</b>	540 <b>Romances</b>	<b>VIDEO ON DEMAND</b>
140 <b>TBS</b>	321 <b>BET Jams</b>	450 <b>TruTV HD</b>	541 <b>Sounds of the Seasons</b>	Using the VOD button on your
141 <b>Bravo</b>	322 <b>Tr3s</b>	451 <b>Comedy Central HD</b>	542 <b>Stage &amp; Screen</b>	remote allows you to choose from
142 <b>The Learning Channel</b>	323 <b>NICK Mix</b>	452 <b>TVLand HD</b>	543 <b>Soundscapes</b>	movies, local government, sporting,
143 <b>Nickelodeon</b>	324 <b>CMT Music</b>	453 <b>BET HD</b>	544 <b>Smooth Jazz</b>	community events, plus 100's of FREE
144 <b>Golf Channel</b>	325 <b>MTV Classic</b>	454 <b>CNN HD</b>	545 <b>Jazz</b>	rentals.
145 <b>The Weather Channel</b>	326 <b>BET Soul</b>	455 <b>HLN HD</b>	546 <b>Blues</b>	
146 <b>Animal Planet</b>	327 <b>FX Movies</b>	456 <b>FOX Business News HD</b>	<b>HBO UNLIMITED</b>	
147 <b>VH-1</b>	328 <b>LOGO</b>	457 <b>WGN HD</b>	200 <b>HBO</b>	
148 <b>MTV</b>	329 <b>GAC</b>	458 <b>Turner Classic Movies HD</b>	201 <b>HBO Family</b>	
149 <b>TV Land</b>	346 <b>FM</b>	459 <b>DIY HD</b>	202 <b>HBO Plus</b>	
150 <b>Gospel Music Television</b>	347 <b>Sundance TV</b>	460 <b>OWN</b>	203 <b>HBO Signature</b>	
151 <b>BET</b>	348 <b>BBC World News</b>	461 <b>OXYGEN HD</b>	204 <b>HBO Comedy</b>	
152 <b>The History Channel</b>	350 <b>CWKYT</b>	462 <b>FYI</b>	205 <b>HBO Zone</b>	
153 <b>Cartoon Network</b>	352 <b>WLEX2-MeTV</b>	463 <b>RFD HD</b>	206 <b>HBO HDTV</b>	
154 <b>Oxygen</b>	353 <b>CometTV</b>	464 <b>C-Span HD</b>	207 <b>HBO Latino</b>	
155 <b>OWN</b>	354 <b>Adair Local &amp; Live</b>	465 <b>KET HD</b>		
157 <b>truTV</b>	359 <b>WTVQ - My Network</b>	466 <b>The Cowboy Channel HD</b>		
158 <b>Boomerang</b>	360 <b>WTVQ AntennaTV</b>	471 <b>FXX HD</b>		
159 <b>FOOD Network</b>	361 <b>WKYU PBS</b>	476 <b>SEC HD</b>		
160 <b>HGTV</b>	362 <b>KET KY</b>	477 <b>SECN2</b>		
161 <b>ION</b>	363 <b>WDKY-3 Charge TV</b>	478 <b>National Geographic HD</b>		
162 <b>Comedy Central</b>	366 <b>The Cowboy Channel</b>	479 <b>ID HD</b>		
163 <b>FX</b>	399 <b>NFL RedZone**</b>	480 <b>SCIENCE CHANNEL HD</b>		
164 <b>The Travel Channel</b>	<b>HD CHANNELS</b>	481 <b>Destination America HD</b>		
165 <b>FOX News Channel</b>	400 <b>WKYT (CBS) Lexington 27 - HD</b>	482 <b>HALLMARK MOV HD</b>		
166 <b>CNBC</b>	401 <b>WLEX (NBC) Lexington 18 - HD</b>	483 <b>Sundance TV HD</b>		
167 <b>RFD - TV</b>	402 <b>WTVQ (ABC) Lexington 36 - HD</b>	488 <b>HALLMARK CHANNEL HD</b>		
168 <b>E! Entertainment TV</b>	403 <b>WDKY (FOX) Lex/Danville 56 - HD</b>	490 <b>AXS TV</b>		
169 <b>AMC</b>	405 <b>TNT HD</b>	492 <b>Velocity - HD</b>		
170 <b>National Geographic</b>	406 <b>WLKY (CBS) Louisville 32 - HD</b>	494 <b>WTVQ2 MyNetworkTV</b>		
171 <b>FXX</b>	407 <b>WAVE (NBC) Louisville 3 - HD</b>	499 <b>Weather Channel HD</b>		
176 <b>SEC Network</b>	408 <b>Duo2 HD</b>	500 <b>Local Weather Channel HD</b>		
177 <b>SECN2</b>	409 <b>ESPN2 HDTV</b>	<b>DIGITAL MUSIC</b>		
180 <b>The Outdoor Channel</b>	410 <b>ESPN HDTV</b>	501 <b>Hit List</b>		
181 <b>NBC Sports Network</b>	411 <b>ESPNU HD</b>	502 <b>Pop Rhythmic</b>		
182 <b>Disney Jr.</b>	412 <b>ESPN NEWS HD</b>	503 <b>Dance &amp; EDM</b>		
183 <b>Do-It-Yourself</b>	413 <b>GOLF HD</b>	504 <b>MC Indie</b>		
184 <b>Nat Geo Wild</b>	414 <b>NBC Sports Network HD</b>	505 <b>Hip-Hop and R&amp;B</b>		
		506 <b>Rap</b>		

\*Lexington ABC programming will be substituted during prime time. \*\*NFL RedZone available by annual subscription of \$49.95.

2150 North Main Street  
Jamestown, Kentucky 42629

270-343-3131  
www.duocounty.com



## **Exhibit 8**

**(WBKO Wikipedia Entry from <https://en.wikipedia.org/wiki/WBKO>)**



WBKO

From Wikipedia, the free encyclopedia

**WBKO** is the ABC-affiliated television station for South Central Kentucky licensed to Bowling Green. It broadcasts a high definition digital signal on VHF channel 13 (also the station's virtual channel via PSIP) from a transmitter along KY 185/Richardsville Road in unincorporated northern Warren County. Owned by Gray Television, WBKO has studios on Russellville Road (US 68/KY 80) along the William H. Natcher Parkway in Bowling Green.

Contents

▪ 1 History

▪ 1.1 As WLTV

▪ 1.2 As WBKO

▪ 1.3 Digital era

▪ 2 Programming

▪ 2.1 Digital channels

▪ 2.2 Sports programming

▪ 3 News operation

▪ 3.1 Weather coverage

▪ 4 Out-of-market coverage

▪ 5 See also

▪ 6 References




▪ 7 External links

History

As WLTV

The station signed on the air on June 3, 1962 as **WLTV** (standing for **Wonderful Live Television**). It was the first commercial outlet to launch in Bowling Green and aired an analog signal on VHF channel 13. Joe Walters (a former RCA engineer) and Mr. & Mrs. George Brown (local sales people) owned the station. It was an Independent owned by Argus Broadcasting and originally had studios at its transmitter in rural Warren County.

On March 6, 1967, WLTV became affiliated with ABC and aired all of its shows. After affiliating with ABC, the station moved to new studios located on Morgantown Road in downtown Bowling Green. After spending some time off the air in late 1969 due to an explosion destroying its transmitter, Argus Broadcasting sold the station to Professional Telecasting Systems on June 11, 1970.<sup>[2]</sup> The "explosion" was due to an estimated 48 sticks of dynamite being placed on the bottom of the tower. It is suspected that a local bootlegger at the time did not appreciate the news spotlighting his operation. This did not collapse the tower although is still stood with a bow in it, the transmission line on the lower section of the

WBKO	
<div><div><div></div><div></div><div></div></div></div>	
Bowling Green, Kentucky	
United States	
Branding	<div><div><div>.1: WBKO 13</div><div><i>WBKO 13 News</i> (newscasts)</div></div><div><div>.2: WBKO Fox</div><div></div></div><div><div>.3: South Central Kentucky CW</div><div></div></div></div>
Slogan	<div><div><i>Stay Connected</i> (general)</div><div><i>Bowling Green's Fox</i> (on DT2)</div></div>
Channels	Digital: 13 (VHF) Virtual: 13 (PSIP)
Subchannels	<div><div><div>.1: 720p 16:9 WBKO-HD</div><div>.2: 480i 16:9 WBKO-FX</div><div>.3: 480i 16:9 WBKO-CW</div></div></div>
Affiliations	<div><div><div>.1: ABC</div><div>.2: Fox / Jewelry TV (secondary)</div><div>.3: The CW Plus</div></div></div>
Owner	Gray Television (Gray Television Licensee, LLC)
First air date	June 3, 1962
Call letters' meaning	We're Bowling Green, Kentucky's Own
Sister station(s)	W14DG-D <sup>[1]</sup>
Former callsigns	WLTV (1962–1971)

tower was destroyed and the tower was unsafe. A temporary tower with a temporary antenna was erected at the site and station continued operation with diminished coverage a few months later. This heralded the relocation of the transmitter to the site where it now operates.

## As WBKO

The new owner, Professional Telecasting, adopted the current **WBKO** (meaning **B**owling **G**reen, **K**entucky's **O**wn) call sign and instituted color telecasting for local in-studio programming and newscasts in 1971. Also by this time, the station had moved to studios on East 10th Street in Downtown Bowling Green. In 1976, a local group known as Bluegrass Media bought WBKO from Professional Telecasting.<sup>[3]</sup> It remained in Bluegrass's hands until 1983 when broadcaster A. Richard Benedek took over. Under Benedek's management, WBKO built its present studios on Russellville Road in 1985. The station was one of the few ABC stations nationwide that refused to broadcast *NYPD Blue* in its first season in 1993. That program's first season was instead broadcast on Fox affiliate WKNT (now NBC affiliate WNKY).<sup>[4]</sup>

By October 7, 2001, an agreement between this station and the area's cable provider allowed WBKO to launch cable-exclusive WB affiliate "WBWG" through The WB 100+ Station Group as the Bowling Green market had a rank of 183. Since it was a cable-exclusive outlet, the call sign was not officially recognized by the Federal Communications Commission (FCC). WBKO provided sales and promotional opportunities to "WBWG".<sup>[5][6]</sup> By September 3, 2002, the station's WB+ cable channel was also identified as WB12.<sup>[5][7]</sup>

## Digital era

In 2000, the station began broadcasting a digital signal on UHF channel 33. In 2002, Benedek sold most of his stations (including WBKO) to current owner Gray Television. Due to its fairly close proximity to Nashville, Tennessee (about 60 miles (97 km)), WBKO has often competed with that market's ABC affiliate WKRN for viewing allegiances.

In September 2006, WBKO-Fox subchannel 13-2 was launched to serve as a new Fox affiliate for the Bowling Green media market.<sup>[8][9]</sup> This filled a gap created in 2001 when WNKY dropped its Fox affiliation and switched to NBC.

On January 24, 2006, UPN and The WB announced the two networks would cease broadcasting and merge. The new combined service would be called The CW. The CW launched on September 18 and WBWG became affiliated with The CW via The CW Plus (a similar operation to The WB 100+). After becoming available on a new third digital subchannel of WBKO, it dropped the faux calls in favor of WBKO-CW.

<b>Former channel number(s)</b>	13 (VHF analog, 1962–2009) 33 (UHF digital, 2000–2009)
<b>Former affiliations</b>	Independent (1962–1967) cable WBWG/WB12: The WB
<b>Transmitter power</b>	22 kW 31.5 kW (CP)
<b>Height</b>	220.5 m (723 ft)
<b>Class</b>	DT
<b>Facility ID</b>	4692
<b>Transmitter coordinates</b>	37°3'49.4"N 86°26'6.7"W
<b>Website</b>	<span>www.wbko.com</span> ( <span>http://www.wbko.com</span> )



On December 8, 2008 at 1:15 in the morning, the station turned off its analog transmitter in a flash-cut procedure.<sup>[10][11]</sup> This allowed the station to begin the process of installing a new digital antenna and other equipment. Originally, its digital signal was scheduled to return to VHF channel 13 on or immediately after December 22. However, due to inclement weather and the holiday season, the construction took longer than anticipated with eight more days of construction resuming on January 3, 2009.<sup>[12]</sup> Due to the installation of the equipment at the transmitter site, the digital signal (on UHF channel 33) was off-the-air during daytime hours so that installation work could be completed.<sup>[13]</sup> Until the completion of the over-the-air transition, WBKO was seen non-stop on several area cable systems.

Programming

Digital channels

Channel	Video	Aspect	PSIP short name	Programming <sup>[1]</sup>
13.1	720p	16:9	WBKO-HD	Main WBKO programming / ABC
13.2	480i		WBKO-FX	Fox (09a-12a) / Jewelry TV (12a-09a)
13.3			WBKO-CW	South Central Kentucky CW (Plus)

Sports programming

WBKO has been the home to Southeastern Conference football and basketball games from Jefferson-Pilot (later Lincoln Financial Sports, now Raycom Sports) from the 1980s until 2009 <sup>[14]</sup> (although WNKY aired most SEC football games in the 1990s). After Raycom lost the rights to the SEC in 2009, WBKO ran SEC games syndicated through ESPN Plus-oriented SEC TV (formerly SEC Network) from 2009 to the end of the 2013-14 basketball season. This ended in 2014 because of the inception of the then-new cable-exclusive SEC Network that launched in August 2014. That was part of a new contract between the Southeastern Conference and ESPN to launch that new network. The UK IMG Sports Network also provided programming related to the University of Kentucky's football and men's basketball programs. They also provided early season Kentucky Wildcats basketball games until the SEC Network launched. As a result, the only sports programming available on WBKO is from ABC's exclusive *ESPN on ABC* package, including any NBA and college football games that air on ABC.<sup>[15]</sup>

News operation

As the first commercial television station to launch in Bowling Green, WBKO has been a longtime leader according to Nielsen ratings. Even after the sign-on of WQQB (now WNKY) in 1989, the station has remained the dominant outlet for South Central Kentucky. However, it has also competed with Nashville stations transmitting rimshot signals into parts of the Bowling Green area. WBKO's first newscasts were branded as *Channel 13 News Report* and began airing in 1963. In the 1970s, the news operation was known as *13 News*. Most recently, the broadcasts were re-branded to *WBKO 13 News*.

As the area's original Fox affiliate in the mid-1990s, WNKY established its own news department. Unable to gain consistent viewership and ratings against WBKO, that station's short lived full news operation was eventually shut down. In the early-2000s, WNKY slowly re-entered the market with an unusual weather-only approach. Instead of full newscasts, it offers weekday morning and nightly local weather forecast cut-ins provided through AccuWeather of State College, Pennsylvania.

In late January 2009 in an attempt to increase its presence against WBKO, WNKY launched a weekday morning show. Airing for a half-hour at 6:30, the broadcast is produced in partnership with the *Bowling Green Daily News*. The newspaper provides short local news updates and WNKY produces traditional weather segments. The show is replayed at 9 in the morning on WNKY's CBS-affiliated second subchannel.



On October 21, 2007, current Fox affiliate WBKO-DT2 began airing a thirty-minute prime time newscast on weeknights known as *WBKO Fox News at 9*. Sarah Goebel originally anchored the show until early-2008 when she was promoted to WBKO's main weeknight broadcasts. After this, Daniel Kemp was the news anchor until early-June when he moved to the weekend newscasts on the main channel. Julie Talley would host the prime time broadcast for a short time in mid-2008 after which reporter and internet producer Sam Provenzano anchored the show until its cancellation. *WBKO Fox News at 9* stopped airing on November 28, 2008 as a result of financial issues. WBKO-DT2 continues to replay *MidDay Live* tape-delayed weekdays at noon.

Unlike most ABC affiliates, the station does not air a full two-hour weekday morning show and/or early evening news on weekends.

Like all CW plus affiliates in the Central Time Zone, WBKO-DT3 aired the nationally syndicated morning show *The Daily Buzz* on weekdays from 5 until 8 a.m. until its 2014 cancellation.

## Weather coverage

WBKO has always had a long-standing policy to preempt regular programming for wall-to-wall, uninterrupted severe weather coverage in the event that the National Weather Service issues a tornado warning for any county within its viewing area. The station operates its own Doppler weather radar, the "First Alert Live Doppler", launched in 1998. It is a real time Doppler radar that was primarily used from its launch until late 2004 when the station began utilizing NWS NEXRAD Doppler radars from Nashville (Old Hickory), Paducah, Louisville, and (starting in 2013) Fort Campbell for better resolution in tracking storms. Weather forecasts from this station can be heard on WKLX FM 100.7, WOVO 106.3, and WPTQ FM 105.3, all of which simulcast audio of wall-to-wall severe weather coverage during a tornado warning situation.

## Out-of-market coverage

WBKO's home market area is very small, so WBKO's terrestrial signal covers all of the Bowling Green media market, and spills into nearby portions of three neighboring market areas. The signal can be picked up as far west as Hopkinsville, as far north as the Rough River Lake areas, Owensboro and Elizabethtown, as far east as Columbia, and as far south as the far northern suburbs of Nashville. People with over-the-air receivers in the northeast side of Clarksville, Tennessee can also pick up WBKO's signal.<sup>[16]</sup>

WBKO is carried on several cable systems outside the Bowling Green market. Only the station's main channel is carried on these out-of-market cable systems, including the Suddenlink cable system in Logan County, the Charter system in Hopkinsville, the South Central Rural Telephone Cooperative (SCRTC)'s cable customers in Allen and Monroe counties (in addition to their customers in Barren, Hart, and Metcalfe counties), as well as some cable carriers in the Elizabethtown area.<sup>[17]</sup> The SCRTC also provides WBKO's main channel to their customers in Green and Larue counties in the Louisville market, but it is subject to blackout of ABC programming by WHAS-TV in accordance with Syndex rules.<sup>[18]</sup> WBKO's main channel is also carried on Comcast channel 13 in Elizabethtown and Campbellsville.<sup>[19]</sup>

Duo County Telecom also carries WBKO's main channel for its customers in Adair,<sup>[20]</sup> Cumberland,<sup>[21]</sup> and Russell<sup>[22]</sup> counties, but under Syndex rules, ABC programming from WHAS-TV is substituted during the primetime hours in Adair and Cumberland counties (despite Cumberland County being part of the Nashville market), while WTVQ's ABC programming from Lexington is substituted during the primetime hours in Russell County on account of that area considered to be in the Lexington DMA.<sup>[19]</sup>

## See also

- WBKO-DT2 - WBKO's Fox-affiliated second digital sub-channel.
- WBKO-DT3 - WBKO's third subchannel.

## References

1. "Digital TV Market Listing for WBKO" ([https://www.rabbitears.info/market.php?request=station\\_search&callsign=WBKO#station](https://www.rabbitears.info/market.php?request=station_search&callsign=WBKO#station)). *RabbitEars.Info*. Retrieved July 12, 2017.
2. *Broadcasting Yearbook 1977* (<http://americanradiohistory.com/Archive-BC-YB/1977-TV-Factbook/701-800-1977-TV-Factbook.pdf>), page 335-b.
3. *Television & Cable Factbook 1988* (<http://americanradiohistory.com/Archive-BC-YB/1988-TV-Factbook/401-600-TV-Factbook-1988.pdf>), page A-451.
4. Flint, Joe (November 1, 1993). "NYPD Blue": here, there, and nowhere". *Broadcasting*, November 1, 1993, page 20- (<http://www.americanradiohistory.com/hd2/IDX-Business/Magazines/Archive-BC-IDX/93-OCR/BC-1993-11-01-Page-0020.pdf>) 21. (<http://www.americanradiohistory.com/hd2/IDX-Business/Magazines/Archive-BC-IDX/93-OCR/BC-1993-11-01-Page-0021.pdf>)
5. O'Steen, Kathleen (September 22, 2003). "The WB's Radical Genesis" ([http://russellmyerson.com/media/document/russ\\_myerson\\_television\\_week2250\\_1.pdf](http://russellmyerson.com/media/document/russ_myerson_television_week2250_1.pdf)) (PDF). *Television Week*: 14. Retrieved July 12, 2017.
6. "Stations Index" (<http://web.archive.org/web/20011007193451/http://www.thewb.com:80/Stations/Index/0,8112,,00.html>). *theWB.com*. the WB. October 7, 2001. Archived from the original (<http://www.thewb.com:80/Stations/Index/0,8112,,00.html>) on October 7, 2001. Retrieved July 12, 2017.
7. "Stations" (<http://web.archive.org/web/20020904045113/http://thewb.com:80/Stations/Index/0,8112,,00.html>). *TheWB.com*. The WB Television Network. September 4, 2002. Archived from the original (<http://thewb.com:80/Stations/Index/0,8112,,00.html>) on September 4, 2002. Retrieved July 12, 2017.
8. Cetawayo, Ameerah (February 21, 2006). "WBKO FOX coming to region" ([http://www.bgdailynews.com/news/wbko-fox-coming-to-region/article\\_f2a72204-0653-5fed-86c3-0e8bcce003c3.html](http://www.bgdailynews.com/news/wbko-fox-coming-to-region/article_f2a72204-0653-5fed-86c3-0e8bcce003c3.html)). *Bowling Green Daily News*. Retrieved December 24, 2014.
9. WBKO | Fox - FAQ (<http://web.archive.org/web/20060720022306/http://www.wbko.com/fox>). Archived from the Original (<http://www.wbko.com/fox>) July 20, 2006.
10. WBKO Shuts Down Analog Signal (<http://www.wbko.com/home/headlines/35700924.html>) WBKO. Retrieved on December 8, 2008.
11. FCC Database ([http://fjallfoss.fcc.gov/cgi-bin/ws.exe/prod/cdbs/forms/prod/cdbsmenu.htm?context=25&appn=101283495&formid=911&fac\\_num=4692](http://fjallfoss.fcc.gov/cgi-bin/ws.exe/prod/cdbs/forms/prod/cdbsmenu.htm?context=25&appn=101283495&formid=911&fac_num=4692)) Retrieved on December 8, 2008.
12. Digital Transition (<http://www.wbko.com/home/headlines/36457719.html>) WBKO. Retrieved on December 19, 2008.
13. Important Digital Changeover Information (<http://www.wbko.com/home/headlines/35796109.html>) WBKO. Retrieved on December 9, 2008.
14. JP Sports and Entertainment - SEC Basketball Game of the Week - 1998 TV Schedule ([http://web.archive.org/web/19980216153759/http://jpsports.com/sec\\_sch.htm](http://web.archive.org/web/19980216153759/http://jpsports.com/sec_sch.htm)). Archived from the Original ([http://jpsports.com/sec\\_sch.htm](http://jpsports.com/sec_sch.htm)) February 16, 1998. Retrieved October 29, 2014.
15. SEC Network FAQ - SEC Digital Network (<http://www.secdigitalnetwork.com/NEWS/tabid/473/Article/244763/sec-network-faq.aspx>)
16. Maps of Full-powered Television stations - Bowling Green, Kentucky ([http://www.fcc.gov/dtv/markets/maps\\_current/Bowling\\_Green\\_KY.pdf](http://www.fcc.gov/dtv/markets/maps_current/Bowling_Green_KY.pdf)) (Federal Communications Commission) (2009).
17. SCRTC Cable Channel Lineup for Barren, Hart, and Metcalfe Counties (January 2015) (<http://www.scrtc.com/images/BarrenChannelLineup2015.pdf>) South Central Rural Telephone Cooperative (<http://www.scrtc.com>)
18. SCRTC Cable Channel Lineup for Green and Larue Counties (January 2015) (<http://www.scrtc.com/images/GreenChannelLineup2015.pdf>) South Central Rural Telephone Cooperative (<http://www.scrtc.com>). Retrieved February 20, 2015.
19. Where to Watch the WBKO Family of Channels (<http://www.wbko.com/station/misc/WBKO-Channel-List.html>)
20. Duo County Telecom - Channel Guide for AdairCounty ([http://web.duo-county.com/images/pdf/channelguide\\_adair.pdf](http://web.duo-county.com/images/pdf/channelguide_adair.pdf))
21. Duo County Telecom - Channel Guide for Cumberland County, KY ([http://web.duo-county.com/images/pdf/channelguide\\_cumberland.pdf](http://web.duo-county.com/images/pdf/channelguide_cumberland.pdf))



22. Duo County Telecom - Channel Guide for Russell County ([http://web.duo-county.com/images/pdf/channelguide\\_russell.pdf](http://web.duo-county.com/images/pdf/channelguide_russell.pdf))

## External links

- WBKO (<http://www.wbko.com>)
- WBKO mobile (<http://www.wbkotogo.com/>)
- Query the FCC's TV station database for WBKO (<https://transition.fcc.gov/fcc-bin/tvq?call=WBKO>)
- BIAfn's Media Web Database -- Information on WBKO-TV ([http://www.bia.com/Broadcast-Media/Resources/Station-Search/resources\\_search\\_result.asp?calls=WBKO&media=TV](http://www.bia.com/Broadcast-Media/Resources/Station-Search/resources_search_result.asp?calls=WBKO&media=TV))

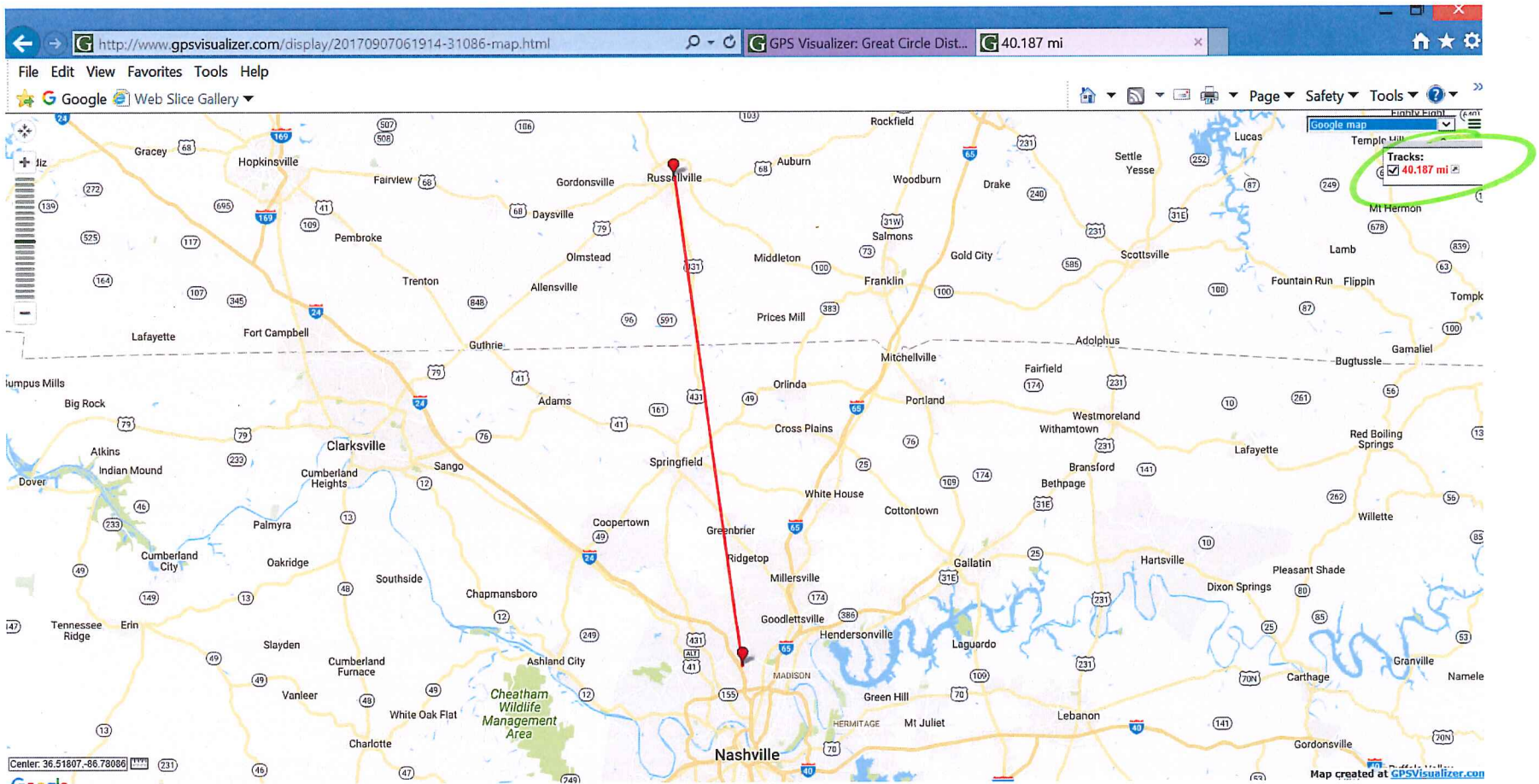
Retrieved from "<https://en.wikipedia.org/w/index.php?title=WBKO&oldid=796702343>"

- 
- This page was last edited on 22 August 2017, at 15:42.
  - Text is available under the Creative Commons Attribution-ShareAlike License; additional terms may apply. By using this site, you agree to the Terms of Use and Privacy Policy. Wikipedia® is a registered trademark of the Wikimedia Foundation, Inc., a non-profit organization.

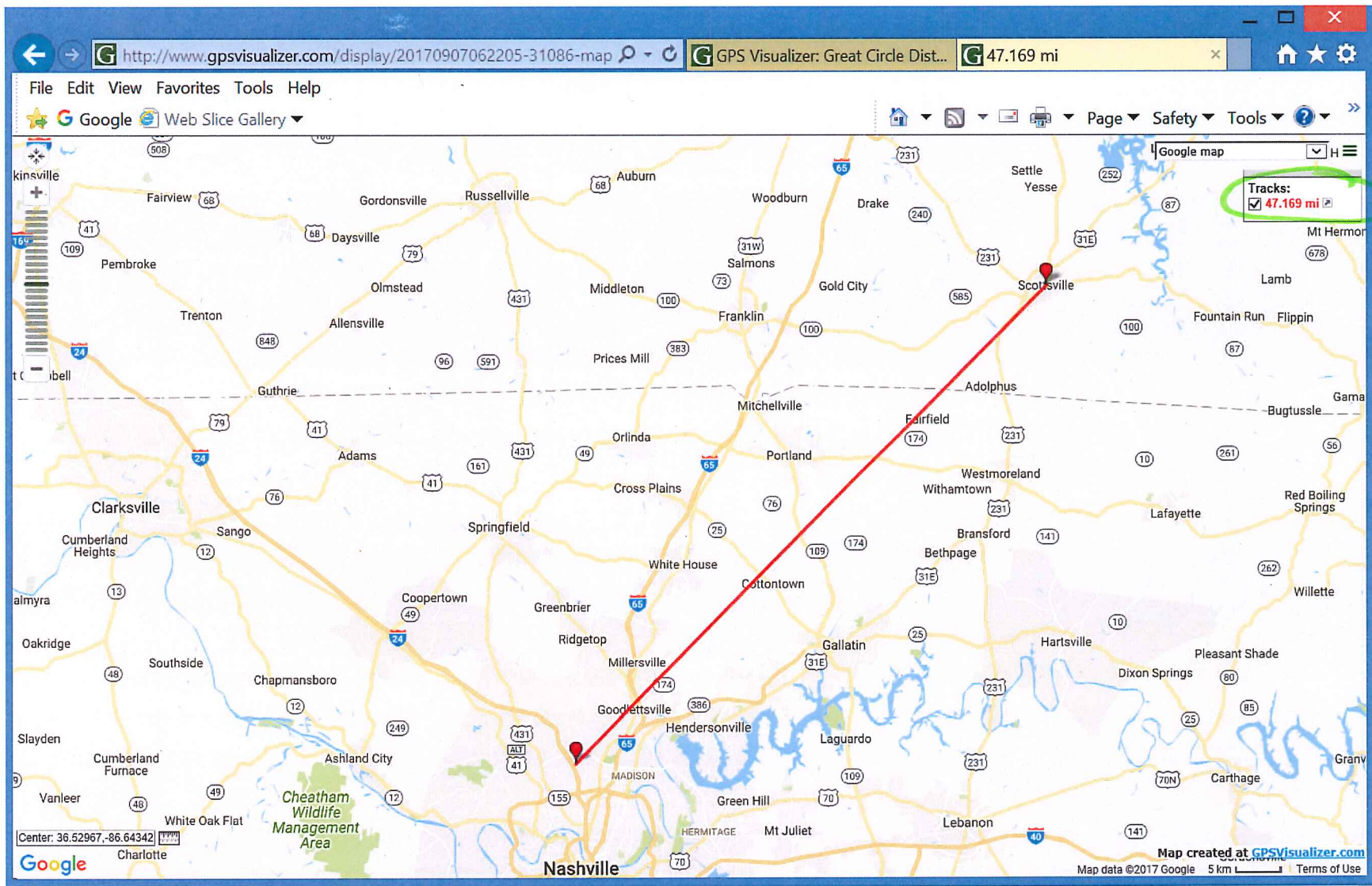
---

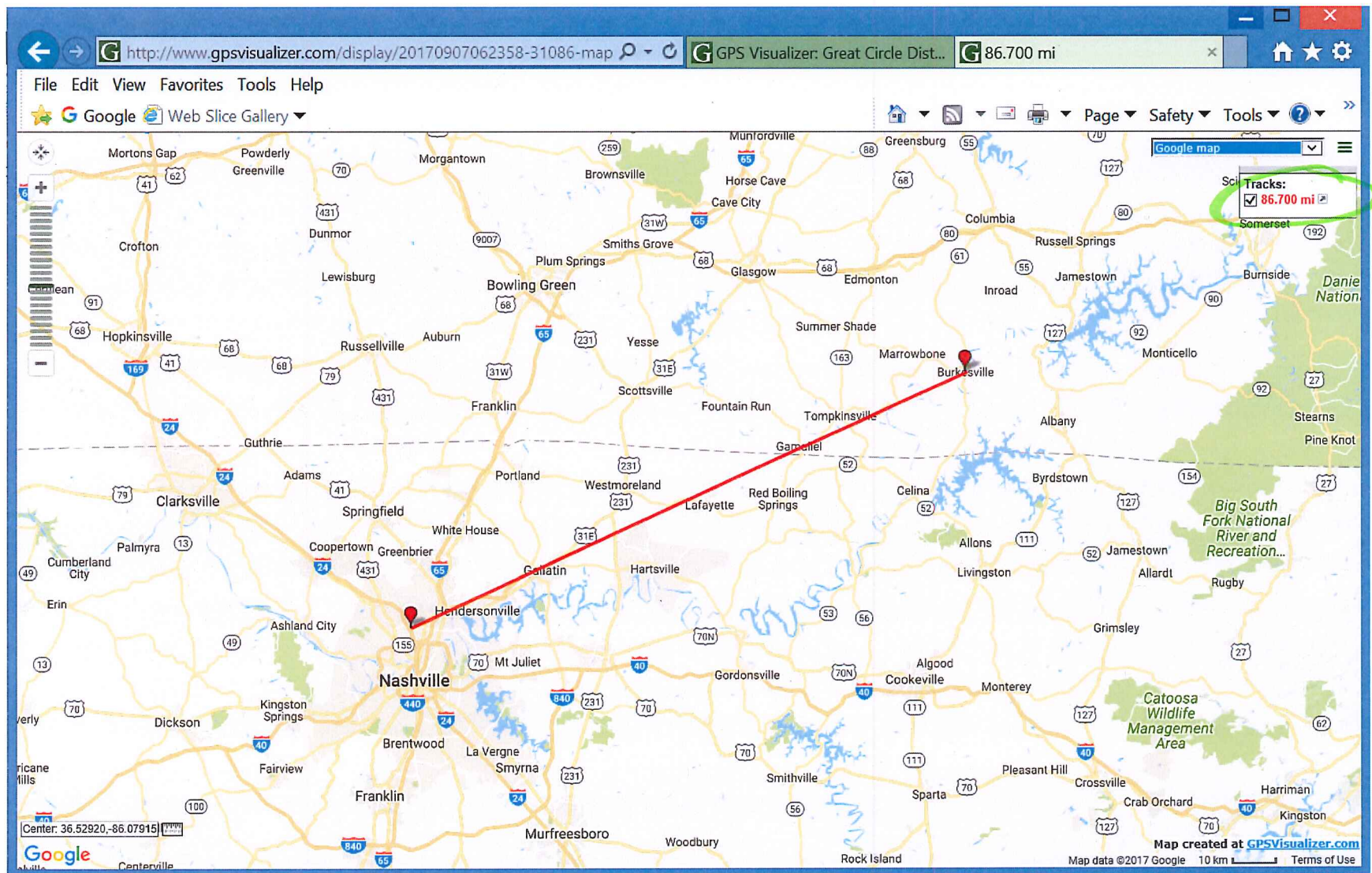
## **Exhibit 9**

**(Distances from WTVF Transmitter  
Location to Nashville Communities)**









**Exhibit 10**  
**(Nielsen Viewing Data)**

---



Characteristic	All TV Households
Daypart	M-Su 07:00 AM - 01:00 AM

Row Labels	Values	
	Average rating	Average impressions
Allen Co., KY		
17-Feb		
WBKO 13.1	0.38	34
WTVF 5.1	10.79	970
WKRN-TV 2.1	2.84	255
17-May		
WBKO 13.1	0.08	7
WTVF 5.1	17.15	1484
WKRN-TV 2.1	2.52	218
17-Jul		
WBKO 13.1	0	0
WTVF 5.1	13.87	966
WKRN-TV 2.1	0.96	67
Cumberland Co., KY		
17-Feb		
WBKO 13.1	0	0
WTVF 5.1	0	0
WKRN-TV 2.1	0	0
17-May		
WBKO 13.1	0	0
WTVF 5.1	0	0
WKRN-TV 2.1	0	0
17-Jul		
WBKO 13.1	0	0
WTVF 5.1	0	0
WKRN-TV 2.1	0	0
Logan Co., KY		
17-Feb		
WBKO 13.1	0	0
WTVF 5.1	18.48	1665
WKRN-TV 2.1	1.33	119
17-May		
WBKO 13.1	0	0
WTVF 5.1	16.94	1444
WKRN-TV 2.1	2.13	182
17-Jul		
WBKO 13.1	0	0
WTVF 5.1	18.96	1615
WKRN-TV 2.1	1.34	114

Characteristic	Cable
Daypart	M-Su 07:00 AM - 01:00 AM

Row Labels	Values	
	Average of RTG % (X.XX)	Average of IMP
Allen Co., KY		
17-Feb		
WBKO 13.1	1.12	30
WTVF 5.1	14.48	385
WKRN-TV 2.1	0.1	3
17-May		
WBKO 13.1	0.2	5
WTVF 5.1	34.77	832
WKRN-TV 2.1	0	0
17-Jul		
WBKO 13.1	0	0
WTVF 5.1	20.85	548
WKRN-TV 2.1	0	0
Cumberland Co., KY		
17-Feb		
WBKO 13.1	0	0
WTVF 5.1	0	0
WKRN-TV 2.1	0	0
17-May		
WBKO 13.1	0	0
WTVF 5.1	0	0
WKRN-TV 2.1	0	0
17-Jul		
WBKO 13.1	0	0
WTVF 5.1	0	0
WKRN-TV 2.1	0	0
Logan Co., KY		
17-Feb		
WBKO 13.1	0	0
WTVF 5.1	0	0
WKRN-TV 2.1	0	0
17-May		
WBKO 13.1	0	0
WTVF 5.1	0	0
WKRN-TV 2.1	1.81	29
17-Jul		
WBKO 13.1	0	0
WTVF 5.1	0	0
WKRN-TV 2.1	0.31	6

Characteristic	ADS
Daypart	M-Su 07:00 AM - 01:00 AM

Row Labels	Values	
	Average of RTG % (X.XX)	Average of IMP
Allen Co., KY		
17-Feb		
WBKO 13.1	0.06	4
WTVF 5.1	9.24	585
WKRN-TV 2.1	3.99	253
17-May		
WBKO 13.1	0.03	2
WTVF 5.1	10.42	652
WKRN-TV 2.1	3.48	218
17-Jul		
WBKO 13.1	0	0
WTVF 5.1	9.63	418
WKRN-TV 2.1	1.55	67
Cumberland Co., KY		
17-Feb		
WBKO 13.1	0	0
WTVF 5.1	0	0
WKRN-TV 2.1	0	0
17-May		
WBKO 13.1	0	0
WTVF 5.1	0	0
WKRN-TV 2.1	0	0
17-Jul		
WBKO 13.1	0	0
WTVF 5.1	0	0
WKRN-TV 2.1	0	0
Logan Co., KY		
17-Feb		
WBKO 13.1	0	0
WTVF 5.1	23.07	1665
WKRN-TV 2.1	1.65	119
17-May		
WBKO 13.1	0	0
WTVF 5.1	20.9	1444
WKRN-TV 2.1	2.21	153
17-Jul		
WBKO 13.1	0	0
WTVF 5.1	24.41	1615
WKRN-TV 2.1	1.63	108

Characteristic	OTA (No ADS and No Cable)
Daypart	M-Su 07:00 AM - 01:00 AM

Row Labels	Values	
	Average of RTG % (X.XX)	Average of IMP
Allen Co., KY		
17-Feb		
WBKO 13.1	0	0
WTVF 5.1	0	0
WKRN-TV 2.1	0	0
17-May		
WBKO 13.1	0	0
WTVF 5.1	0	0
WKRN-TV 2.1	0	0
17-Jul		
WBKO 13.1	0	0
WTVF 5.1	0	0
WKRN-TV 2.1	0	0
Cumberland Co., KY		
17-Feb		
WBKO 13.1	0	0
WTVF 5.1	0	0
WKRN-TV 2.1	0	0
17-May		
WBKO 13.1	0	0
WTVF 5.1	0	0
WKRN-TV 2.1	0	0
17-Jul		
WBKO 13.1	0	0
WTVF 5.1	0	0
WKRN-TV 2.1	0	0
Logan Co., KY		
17-Feb		
WBKO 13.1	0	0
WTVF 5.1	0	0
WKRN-TV 2.1	0	0
17-May		
WBKO 13.1	0	0
WTVF 5.1	0	0
WKRN-TV 2.1	0	0
17-Jul		
WBKO 13.1	0	0
WTVF 5.1	0	0
WKRN-TV 2.1	0	0