

Puerto Rico
Rural Health Care Pilot Program
WC Docket No. 02-60



Puerto Rico Department of Health
San Juan, Puerto Rico

Submitted to:

Telecommunications Access Policy Division
Wireline Competition Bureau
Federal Communications Commission
445 12th Street, SW, Washington, DC 20554

Erika Olsen erika.olsen@fcc.gov
Thomas Buckley thomas.buckley@fcc.gov
Jeremy Marcus jeremy.marcus@fcc.gov

Submitted by:
Olga Valentin
Informatics Office
Puerto Rico Health Department
PO Box 70184
San Juan, PR 00936
(787)765-2929
ovalentin@salud.gov.pr

Organization

The Puerto Rico Health Department (PRHD) is committed to the development and implementation of health information systems that facilitate health information exchange; it is legally and financially responsible for the implementation of a point-to-point communication network from its remote healthcare facilities to its centralized computer center, Informatics Office, Oficina de Informática y Avances Tecnológicos (OIAT), with the objective to provide more efficient and effective health information exchange.

PRDH's Mission

To promote and to conserve health as an indispensable right of every individual to enjoy life and thus, contribute to the productivity and creativity effort of our society.

PRDH's Vision

The Department of Health embraces the commitment and privilege as the public organization responsible for the implementation of mechanisms and healthcare services centered around the individual's daily routine, exempt of political bias, with emphasis on prevention. It is committed to transforming the quality of the services to ones of excellence through physical and human resources; founded on the commitment, respect and responsibility with sensitivity to life and human integrity.

Only the highest principles of scientific and human ethics will serve to guide and inspire new and innovate ways that guarantee the citizen's right to services of health of unquestionable excellence.

By fortifying and stimulating the emotional and physical well-being of our citizens we will contribute directly to our society's fulfillment with humility and thus work to respond to our institutional duty and public obligation.

Objectives

The PRDH's goal is to continue to create a solid foundation for a communication network throughout all the service provider locations, thus increase the feasibility of health information exchange, including a telemedicine project.

By creating an effective communication network the following objectives will be achieved:

- Provide access to central data sources, such the Hospital Information System and Electronic Medical Record, (HIS/EMR), implemented at 22 publicly operated facilities
- Facilitate healthcare provider access to telecommunication necessary to provide remote access to Electronic Medical Records across providers
- Provide a dedicated and secure communication line to send protected health information
- Provide the network with communication redundancy for continuous access to the healthcare information

- Provide access to central data source, such the Data Warehouse, which consolidates data from several local Department of Health Registries
- Facilitate communication between programs via E-mail
- Provide internet access to healthcare providers to facilitate access to medical resources and eligibility verification services.
- Facilitate the necessary infrastructure for a Telemedicine Project, including secure communication and access to the patient's electronic medical record

Scope

In 2003, the PRDH was fortunate to receive funding from the local government to design, develop and implement Integrated Health Information System, consisting of seven health information initiatives. The Integrated Health Information System aims to provide integrated solutions to automate various health information exchanges. It includes Hospital Information System/Electronic Medical Record (HIS/EMR), Encounter System for Healthcare Professional providing service for the government funded insurance (Encounter), SmartCard (TI), New Medicare Program Eligibility System (New SAM), Data Warehouse (DW), Telemedicine (Telemed), and Call Center (CC), and Infrastructure for Data Center.

As part of the Integrated Health Information System funding, the PRHD received funding for the implementation of the infrastructure necessary to improve the security and capacity of the centralized data center with the aim to support access from remote programs and healthcare provider locales. The improvements to the Data Center included a new electricity generator, and electricity backup systems. New security software was implemented, including Firewall, Anti-Virus, and Monitoring software.

Initially, the primary focus of this network was to provide access to two major systems, the public health insurance eligibility system, Eligibility System throughout approximately 90 offices, and the Hospital Information System and Electronic Medical Record, HIS/EMR, throughout thirty-four healthcare facilities. Currently, the HIS/EMR has been successfully implemented at twenty two facilities throughout Puerto Rico. Dedicated communication lines were implemented between remote site and the Data Center. Other programs located in the proximities of these programs were also provided with connectivity to the network, for example Demographic Registry, Women, Children and Infant Program, Immunization Programs. Most participants were given access an electronic mail address and access to internet, as per the definition of their roles and responsibilities.

The purpose of this proposal is for the PRDH to continue to maintain and expand the communication network foundation to provide healthcare providers access to the centralized data sources, such as the Eligibility System, HIS/EMR and the Data Warehouse, PRHD internal portal, PRHD WebPage, other Health related Web sources, email, as well as establish a network monitoring system and redundancy in communications.

With the additional funding, the PRHD plans to:

- Extend its communication network to the supra-tertiary Medical Campus of the PRDH, composed of the following three public hospitals: the University District Hospital, the Pediatrics Hospital, and the Puerto Rico Medical Services Administration (ASEM) to facilitate several health information exchange initiatives. These hospitals have their own communication infrastructure and are part of the PRDH organization; however communication among the entity must be optimized to facilitate projects such as Telemedicine, and a shared Continuity of Care Record or Electronic Medical Record.
- Continue to add participants to the HIS/EMR Project. Currently there are 22 facilities implemented and the goal is to implement 34 facilities. The initially funding provides for the maintenance of the communication lines for the first three years. Most of the facilities have been implemented for at least one year. Additional funding to maintain the communication lines must be identified.
- Extend its communication network to other programs, in particular, the Demographic Registry Offices, Mental Retardation Program, the Health Prevention, Promotion and Protection Program, and Primary Healthcare Regional Offices.
- Add communication line redundancy to the HIS/EMR and Eligibility Project participants.
- Extend its communication network to remote executive and administrative users of other centralized data source, such as the new Data Warehouse Project, which provides aggregate information necessary to offer population-based medicine. The PRDH Data Warehouse includes information from the Demographic Registry, the Women Infant Children Program (WIC), Immunization, the public hospital HIS/EMR system, and public insurance claims.

Management Team

The project is managed by the Sub secretary of Health, Acting Director of Informatics, Program Staff (e.g., public health advisor, epidemiologist, public health nurse, and health educators), information systems staff, and consultants.

The network central data center is located in the PRHD Informatics Office, OIAT. Below you will find a diagram of the current network designed.

Target Population

The PRHD has the responsibility to generate and enforce public health policies for the entire island, provides health insurance for approximately half the population, provides primary healthcare services, and operates the only supra tertiary healthcare center. As a result, the effects of the proposed initiatives are intended to have a positive impact on the entire island population, although initially the impact is directed at services provided to the medical indigent.

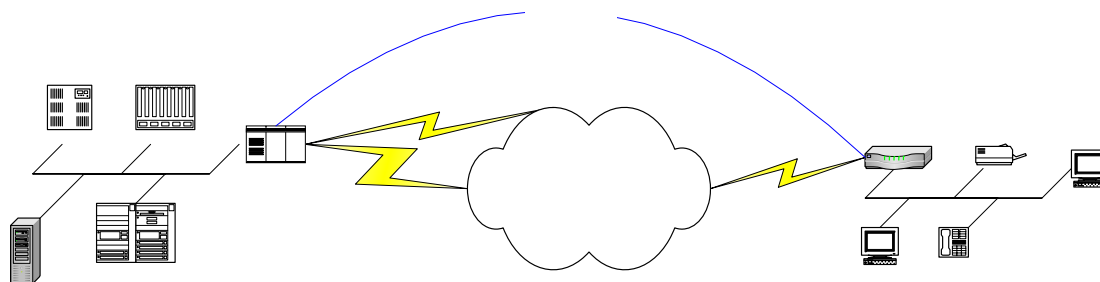
Current Infrastructure

The PRHD network provides connectivity to the following programs and office:

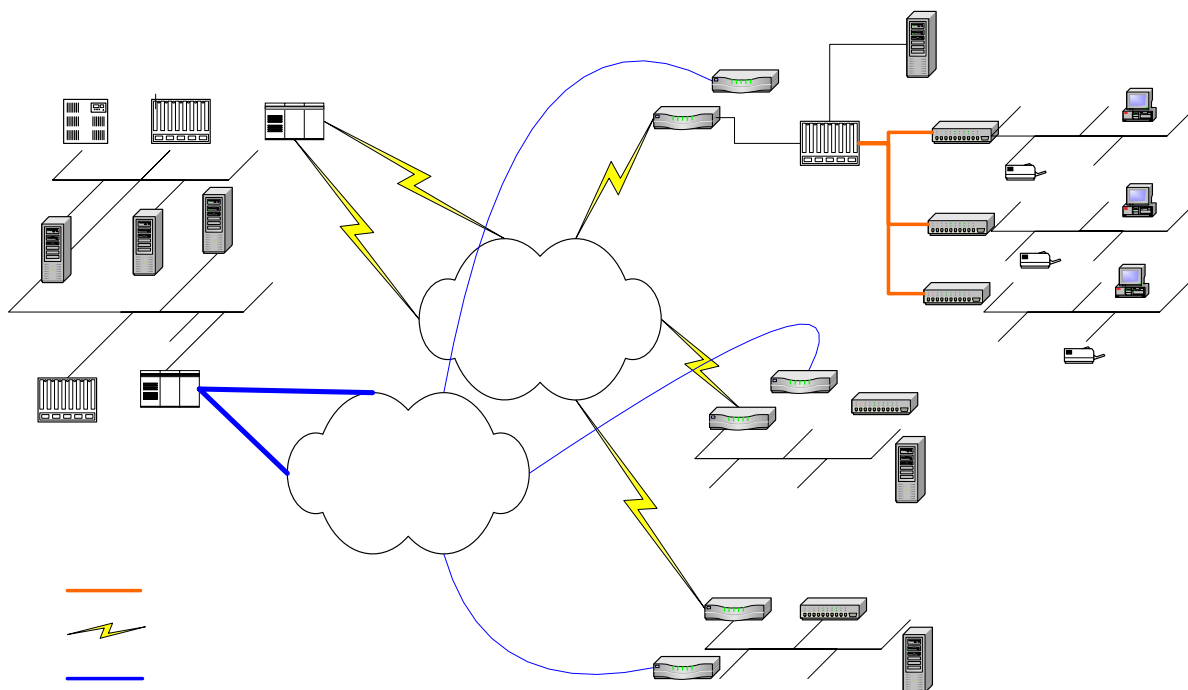
- Physician Directory
- Healthcare Profession Directory
- SARAF (Healthcare Provider Licensing Agency)
- Administration
- Immunization
- Environmental Health
- Hospital Information System/Electronic Medical Record
- Medicare Program
- Women, Infants and Children
- Demographic Registry
- Mental Retardation Program
- Health Promotion, Prevention and Protection Program

The PRDH intends to expand the network of the following programs or facilities: Medicare Program, Demographic Registry, Primary Care Facilities, and the supra tertiary Medical Center.

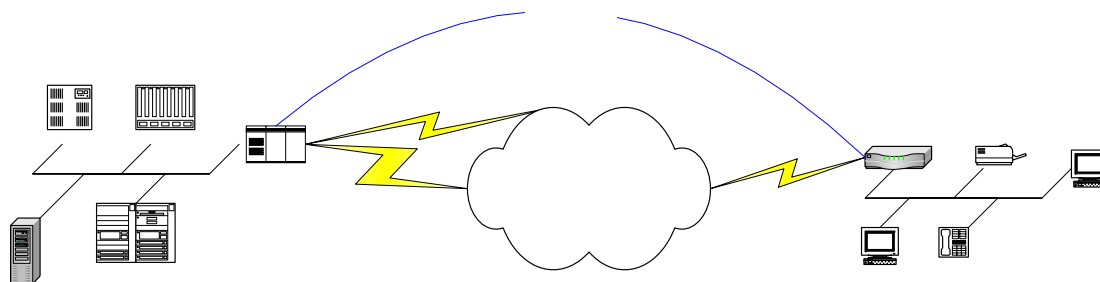
To follow a diagram of the current PRDH network infrastructure for the Medicare Program network. It only depicts one remote site of the participating 90 sites. There is a dedicated T1 communication line between the remote sites and the Data Center. There are ten sites with redundant T1 communication lines.



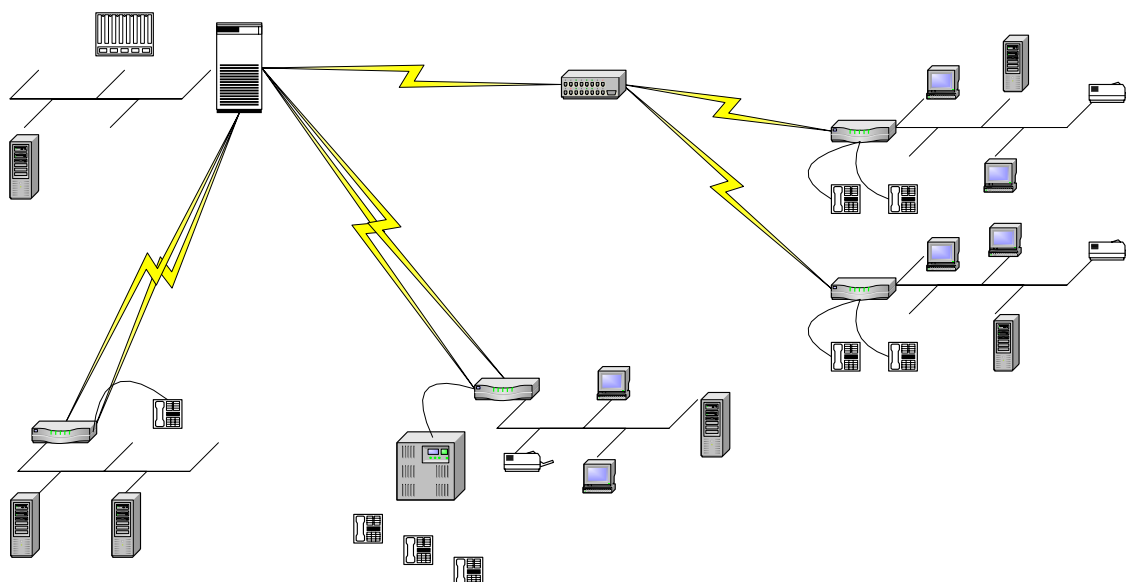
To follow a diagram of the current PRDH network infrastructure for the HIS/EMR Project. It only depicts three remote sites of the participating 22 sites. There is a dedicated T1 communication line between the remote sites and the Data Center. There are three sites with redundant T1 communication lines.



To follow a diagram of the current PRDH network infrastructure for the Demographic Registry Office network. It only depicts one remote sites of the participating 85 sites. These offices are usual located in the same building as the HIS/EMR and/or the Medicare Program facilities, and thus use the dedicated T1 communication line between the HIS/EMR or Medicare Program sites and the Data Center.



To follow a diagram of the current PRDH network infrastructure for the Women, Infant and Children Program network. It only depicts the communication network for the regional and local program offices. There is an immanent need to upgrade the telecommunication infrastructure of these facilities because it does not meet code.



The PRHD has contracted two telecommunication companies for the installation of the communication lines. It aims to supply redundant communication, one from each vendor, but telecommunications services are not available by both vendors throughout Puerto Rico.

Telemedicine Experience

The PRHD conducted a pilot project between the Vieques' Center for Disease and Treatment (CDT) Susana Centeno facility and Puerto Rico Medical Services Administration (ASEM) in 2002. This project was limited to Radiology images, where the remote facility, the CDT Susana Centeno, would send Radiology images to be read at the Puerto Rico Medical Services Administration facility. The program equipment was also used to facilitate videoconferencing between the two facilities. There was a significant saving in patient travel expense and an increase in turn around time of results. Most patients, requiring Radiology services, were historically escorted by helicopter to ASEM. The program has been limited due to contractual issues with the billing process of these services by the hospital institution providing the services.

There is a TeleMedicine committee reviewing the lesson learned of the pilot project and developing a plan to continue the TeleMedicine initiative. It is an essential component to the healthcare system, because it minimizes patient transportation issues. Patients often are faces with limited access to transportation, especially for specialized service located only the metropolitan centers.

During this exercise one of the lessons learned was the need to provide the consulting physician access to the patient’s medical. In order to provide this functionality, connectivity amongst facilities and the central data center must be established.

The Telemedicine committee, consisting of 11 members of the healthcare community, and directed the Secretary of Health, is addressing necessary legal and policy issues to facilitate Telemedicine. A Telemedicine regulation was written and approved. Other issues deferring the development of a strong Telemedicine initiative are liability issues, insurance coverage and billing procedures.

One of the recommendations of the Telemedicine committee to the PRHD and a new PRHD objective is to develop a strong communication infrastructure, as an initially step to several health information exchange projects, recognizing the importance of establishing remote access to an electronic medical record, as a precursor to implementing a Telemedicine Project, to provide the consulting physicians with the patient history, recent diagnosis, and tests results, in order to complement the evaluation.

Assumptions:

The following assumptions have been made for this phase of the project:

- The PRHD will continue to implement additional participants to the HIS/EMR project
- The PRDH will implement new communication facilities to the remain Demographic Registry Offices
- The PRDH will have the necessary funds to implement redundant communication lines for the HIS/EMR and the Medicare Program offices.
- The PRDH will have the necessary funds to implement redundant communication lines for the HIS/EMR and the Medicare Program offices.
- The PRDH will have the necessary funds to implement communication facilities at the Primary Healthcare Regional Offices.
- The PRDH will implement a Call Center and Enterprise Management technology concurrently to expanding its network to facilitate providing technological support and preventive maintenance.

Work Breakdown Structure:

The following itinerary is for the implementation of the additional HIS/EMR participants:

WBS	Activities	Month 1	Month 2	Month 3	Month 4	Month 5	Month 6
1	<i>Agreement Letter for New Participants</i>						
1.1	Request signature from Secretary of Health						

1.2	Meet with each facility administration to discuss agreement letter						
1.3	Receipt of signed agreement letter						
2	Communication lines						
2.1	Send T1 line installation request to communication company						
2.2	Coordinate installation with communication company, OIAT and facility						
	Install T1 communication line						
2.3	Verify communication has been established between facility and network						
3	Computer equipment for facilities						
3.1	Order PCs and peripherals						
3.2	Deployment of equipment to facilities						
3.3	Install equipment in facilities						
3.4	Connect equipment to network						
4	Access to network						
4.1	Request information from providers to create account in HIS						
4.2	Collect providers' information						
4.3	Create account HIS account						
4.4	Provide access to network, Internet and email account						
5	Health Information Software						
5.1	Install health information software						
5.2	Enter data into the health information software						
5.3	Coordinate training and Go-live date						
5.4	Train healthcare facility staff						
5.5	Go-live and provide 24 hours technological support						

The following itinerary is for the implementation of the additional Demographic Registry Offices, the Primary Healthcare Regional Office, and the redundancy of the HIS/EMR and Medicare Program participants:

WBS	Activities	Month 7	Month 8	Month 9	Month 10	Month 11	Month 12
6	Communication lines						
6.1	Send T1 line installation request to communication company						

6.2	Coordinate installation with communication company, OIAT and facility						
6.3	Install T1 communication line						
6.4	Verify communication has been established between facility and network						
7	<i>Computer equipment for facilities</i>						
7.1	Order PCs and peripherals						
7.2	Deployment of equipment to facilities						
7.3	Install equipment in facilities						
7.4	Connect equipment to network						
8	<i>Access to network</i>						
8.1	Request information from providers to create account in HIS						
8.2	Collect providers' information						
8.3	Create account HIS account						
8.4	Provide access to network, Internet and email account						

Milestones:

The milestones for the network expansion project are:

- Letter of agreements are signed
- T1 line is installed and connected to the network
- Equipment is received at the facilities
- The facility provides their information to be entered into the health information system
- Facility personnel is trained in the HIS/EMR

Projected Costs and Resource Requirements:

The PRDH estimates for the next fiscal year a cost of **\$5,107,557** for communications lines installation and equipment, and communication lines services fees. If all new installations are completed, the recurring cost for the communications lines will be **\$3,567,783** (see Appendix F for details).

	Current Costs	Additional Costs	Recurring Costs
Communication Lines	\$1,056,226	\$2,511,557	\$3,567,783
New Installations	\$0	\$488,200	\$0
Equipment	\$0	\$2,107,776	\$0
Subtotal	\$1,056,226	\$5,107,533	\$3,567,783

Currently, all project's participants are non-profit providers; the participant providers are associated to the PRDH. The future participants will also be non-profit providers. The PRDH absorbs all the telecommunication costs for providers who participate in the

project. Financial support for the project comes from assigned state and federal funds of participating programs (see Appendix B): State Fund 111, State Collection Fund 297 & 410, State Fund 571, and, Federal Fund 272.

The PRDH provides the telecommunication service as part of their program thus no revenues are collected from this public service. Currently, access to neither the network nor the data in the centralized database is sold.

List of current participants

Data was unavailable on the Rural Urban Commuting Area (RUCA) code for Puerto Rico; according to the Rural Health Research Center the data for Puerto Rico is under analysis and construction, to review the information log on to <http://depts.washington.edu/uwruca/index.html>.

Medicare Program Offices

There are currently 90 Medicare Program Offices on the network (see Appendix C for listing).

Demographic Registry

There are currently 85 Demographic Registry Program Offices on the network (see Appendix D for listing). These office use the communication line installed by the Medicare Program offices or the HIS/EMR facilities

ASEM

Administración de Servicios Médicos de Puerto Rico
Centro Médico de Puerto Rico
Bo. Bonacillos
Ave. Américo Miranda, Rept. Metropolitano
Río Piedras, PR 00935
787-754-0101

Centro Pediátrico Dr. Antonio Ortiz
Hospital Universitario
Centro Médico de Puerto Rico
Ave. Américo Miranda, Rept. Metropolitano
Río Piedras, PR 00919
787-777-3535

Hospital San Juan
Centro Médico de Puerto Rico
Bo. Monacillos
San Juan, PR 00936
787-766-2222

University District Hospital
Centro Médico de Puerto Rico

Carr 22
Bo. Monacillos
Río Piedras, PR 00935
787-777-3535

Centro Cardiovascular de Puerto Rico
Centro Médico de Puerto
Esquina Ave. Américo Miranda
Río Piedras, PR 00924
787-754-8500

Center for Diagnosis and Treatment

The following list of 22 healthcare facilities of non-profit providers associated to the PRDH currently participate in the network; we have included the address, zip code, and phone number for each healthcare facility participating in the network:

Rincón Medical Center
Car. Estatal 115 Km. 31.1 Bo. Pueblo
Rincón, PR 00677
(787) 823-0909

Servicios Médicos de Añasco
Car. 402 Km. 1.8 Bo. Las Marías
Añasco, PR 00610
(787) 826-2888

Centro Isabelino de Medicina Avanzada
Ave. Agustín Ramos Calero Interior
Car. 112, Km. 1.4
Isabela, PR 00662
(787) 830-2705

Hospital Universitario Dr. Ramón Ruiz Arnau
Ave. Laurel #100, Bo. Santa Juanita
Bayamón, PR 00956
(787) 787-5151

Centro de Salud Familiar Susana Centeno
Car. 997 Km. 0 Hm. 1 Bo. Destino
Vieques, PR 00765
(787) 741-0392

Centro de Salud Comunal de Culebra
Calle William Font Final
Culebra, PR 00775
(787) 742-0001

Policlínica Familiar Bernice Guerra
301 Ave. 5 de Diciembre
Car. 102 Km. 39.1
Sabana Grande, PR 00637
(787) 873-1755

Centro de Diagnóstico y Tratamiento de Guayanilla
Calle José de Diego #13
Guayanilla, PR 00656
(787) 835-4254

Centro Servicios de Salud Juan M. Santiago
Car. Ramal 116 Km. 2.2
Guánica, PR 00653
(787) 821-0402

Centro de Tratamiento y Diagnóstico de Adjuntas
Calle Dr. Defendini #4
Adjuntas, PR 00601
(787) 829-2860

Hospital Mario Canales Torresola
Calle Cementero # 2
Car. Estatal #144
al lado casa Alcaldía
Jayuya, PR 00664
(787) 828-9164

Centro de Salud Familiar Santa Isabel
Car. 153 Calle Hostos Final #89
Santa Isabel, PR 00757
(787) 845-5050

Centro de Salud Familiar Yabucoa
Car. 901 Calle Santurino Rodríguez #100
Yabucoa, PR 00767
(787) 893-0480

Centro de Salud Maunabo
Ave. Kennedy Apartado 8
Maunabo, PR 00707
(787) 861-1407

Centro de Servicios Primarios de Salud de Patillas Inc.
Calle Guillermo Riefkhol #99
Patillas, PR 00723

(787) 839-4446

Centro de Salud Hernán Chico
Car. 31 Km. 4.0
Naguabo, PR 00718
(787) 874-2837

Centro de Diagnóstico y Tratamiento Las Piedras
Ave. José Celso Barbosa #63
Las Piedras, PR 00771
(787) 733-5063

Vega Alta Community Health
Car. #2 Km. 31.9 Bo. Bajura
Vega Alta, PR 00692
(787) 883-6728

Dorado Community Health
Car. # 698 Bo. Mameyal
Dorado, PR 0646
(787) 796-3330

Vega Baja Community Health
Car. #2 Km. 37.1
Ave. Villa Pinares #81
Vega Alta, PR 00963

Comerío Medical Hospital
Car. 778 Km. 0.9
Comerio, PR 00782
(787) 875-3136

Centro de Diagnóstico y Tratamiento Dr. Jorge Franceschi
Calle Sergio Peña Almodóvar Esq. Flor Gerena
Humacao, PR 00791
(787) 852-8730

List of future participants

Data was unavailable on the Rural Urban Commuting Area (RUCA) code for Puerto Rico; according to the Rural Health Research Center the data for Puerto Rico is under analysis and construction, to review the information log on to <http://depts.washington.edu/uwruca/index.html>.

The following 11 healthcare facilities of non-profit providers associated to the PRDH are the future participants in the network; we have included the address, zip code, and phone number for each health care facility which will participate in the network;

Medicare Program Offices

There are currently 6 Medicare Program Offices pending installations, including the facilities of Río Grande, Arroyo, Ponce I, Ponce II, Ponce III and the Ponce Regional Office.

Demographic Registry

There are currently 3 Demographic Registry offices pending installations, including the facilities of Junco, Comerío and Toa Alta.

Centers for Diagnosis and Treatment

Centro de Diagnóstico y Tratamiento de Río Grande
Calle Manuel Pimentel y Castro#200
Río Grande, PR 00745
787-809-1010

Centro de Diagnóstico y Tratamiento de Morovis
Morovis, PR 00745

Primary Health Service Regional Offices

Antiguo Hospital Distrito
Carretera 129
Salida 77 de Arecibo a Lares
Arecibo, PR
(787) 439-4121

San Juan Bautista Medical Center
Car. 172, Urb. Turabo Garden
Caguas, PR 00726
(787) 744-3141

Centro Médico de Mayagüez
Edif. Antigua Casa de Salud
Carretera #2, Tercer Piso
Mayagüez, PR

Antiguo Hospital de Distrito
Hospital San Lucas II, Segundo Piso
Ponce, PR
787) 843-9263

Other Program Offices

Mental Retardation Program

CEM Building # 1409, Mezan
Avenida Ponce de León, Parada 20
Santurce, PR

Health Promotion and Protection
CEM Building # 1409, Mezan
Avenida Ponce de León, Parada 20
Santurce, PR

Centers for Prevention and Treatment of STDs

Centro Inmunológico de Arecibo
Car. 129 Antiguo Hosp. de Distrito
Arecibo, PR 00612-3666
(787) 817-1245

Centro Inmunológico de Bayamón
Hospital Universitario Dr. Ramón Ruiz Arnau
Casa de Salud
Ave. Laurel #100, Bo. Santa Juanita
Bayamón, PR 00956
(787) 778-4747

Centro Inmunológico de Caguas
San Juan Bautista Medical Center
Car. 172, Urb. Turabo Garden
Caguas, PR 00726
(787) 744-3141

Centro Inmunológico de Carolina
Hospital de la Universidad de Puerto Rico
Dr. Federico Trilla
Car. # 3 Km. 8.3 Ave. 65th Infantería
Carolina, PR 00984
(787) 757-1800

Centro Inmunológico de Fajardo
Calle Rafael #55 Edif. 1
Fajardo, PR 00738
(787) 274-5502

Centro Inmunológico de Mayagüez
Centro Médico
Hosp. Ramón Emeterio Betances
Suite 6, Ave. Hostos #40
Mayagüez, PR 00680
(787) 834-2110

Centro Inmunológico de Ponce
Hospital San Lucas II
Ave. Tito Castro
Car. 14 Bo. Machuelo
Ponce, PR 00933
(787) 259-4046

Centro Latinoamericano de Enfermedades de Transmisión Sexual
Paseo Celso Barbosa, Edif. de Trauma, Piso I
San Juan, PR 00936
(787) 754-8128

Pediatric Centers

Centro Pediátrico de Arecibo
Car. 129 Antiguo Hospital de Distrito
Arecibo, PR 00612-3666
(787) 817-1245

Centro Pediátrico de Bayamón
Hospital Universitario Dr. Ramón Ruiz Arnau
Casa de Salud
Ave. Laurel #100, Bo. Santa Juanita
Bayamón, PR 00956
(787) 778-4747

Centro de Pediatría de Caguas
San Juan Bautista Medical Center
Car. 172, Urb. Turabo Garden
Caguas, PR 00726
(787) 744-3141

Centro de Pediatría de Fajardo
Calle E Suite 77
Urb. Monte Brisas
Fajardo, PR 00738
(787) 801-1114

Centro Pediátrico Mayagüez
410 Avenida Hostos
Suite 1, Bo. Sábalos
Mayagüez, PR 00682
(787) 834-5830

Centro Pediátrico de Ponce
Ave. Tito Castro 931

Car. 14, Bo. Machuelo
Ponce, PR 00933
(787) 840-7202

Women, Infant and Children Program Offices

There are plans to upgrade the 101 Medicare Program Offices to meet the current infrastructure standard. (see Appendix E for listing).

Appendix A: Abbreviation

OIAT	Oficina de Informática y Avances Tecnológicos, Office of Informatics and Technological Advances
ASEM	Asociación de Servicios Médicos de Puerto Rico, Association of Medical Service of Puerto Rico
CDT	Centro de Diagnóstico y Tratamiento, Center for Diagnosis and Treatment
PRDH	Puerto Rico Department of Health
RUCA	Rural Urban Commuting Area

Appendix B: Programs in Contribution State Funds

I. State Fund (111)

Administration

General

Hospital Institutions

State Laboratory

Women and Children Program

OCASET

Informatics Office

Regional Offices

Environmental Health

SAPS

SARAFS(Licensing Agency)

II. State Fund (272)

Medicare

Biosecurity

BRFS (Risk Factor Surveillance)

HOPWA

OCASET

HIV/AIDS Prevention

Cancer Registry

SAPS

SARAFS

Immunization

AIDS Surveillance

WIC

III. State Income Fund (297 y 410)

State Laboratory

Demographic Registry

Regulation and Certification of Healthcare Professionals

Environmental Health

SARAFS (licensing agency)

Physician Certification

IV. Fund 571

Hospital Pediátrico Universitario

Hospital Universitario de Adultos

Appendix C: Medicare Program Offices

Medicare Program			
<i>City</i>	<i>Administrator</i>	<i>Address</i>	<i>Telephone</i>
Cabo Rojo	Sra. Adelina Carrera Rodríguez	Calle Muñoz Rivera 108	255-2135
Hormigueros	Sra. Nydia Ortiz Lugo	Carr. 2 Km. 164.6 Plaza Monserrate II Oficina 5 y 6	849-4100
Lajas	Sra. Isaac Martínez Pérez	Centro Salud Familiar Ave. Flamboyán #237	899-1778
Sabana Grande	Sra. Myrna Torres Lugo	Carr. 102 Km. 39	873-4510
San German	Sr. Roberto Rodríguez Rosa	Edificio Antongiorgie Ave. Castro Pérez # 103	892-2625
Yauco	Sra. Edna Octaviani Vélez Supervisora Interina	Centro Gubernamental 2do piso	856-5696
Guanica	Srta. Coralis García Martínez Supervisora Interina	Centro Salud Familiar Carr. 116 # 35	821-5114
Guayanilla	Sra. Ana A. Rodríguez	Calle Muñoz Rivera 47	835-4763
Barceloneta	Sr. Carlos Martínez Peña	Carr. Num. 2 Km. 64.9 Cruce Dávila	846-5402
Ciales	Sr. Ángel R. Perdomo Ortiz	Calle Betances Edif. Mercado Agrícola	871-3084
Florida	Srta. Noraima Mercado Acevedo	Calle Antonio Alcazar # 27	822-1128
Dorado	Sra. Nelda Rivera Romero	Centro de Salud Dorado 400 carr. 898 Suite 2	796-0121 / 796-0580
Toa Alta	Sra. Arleen Sonera Ramos	Calle Luis Muñoz Rivera # 32	870-3120
Vega Alta	Sr. José E. Delgado Alicea	CDT. de Vega Alta Carr. 2	883-6100 / 270-2307
Morovis	Sra. Luz Berríos Rodríguez	Ave. Corozal Esquina Patrón	862-1795
Vega Baja	Sra. Nilda Concepción Rodríguez	Urb. Villa Pinares 81 Ave. Villa de Paseos	855-4134
Manatí	Sra. Ángela Villanueva Morales	Calle Ramos Vélez (final) #8 Entrando Esq. Calle Baldorioty	854-9574
<i>City</i>	<i>Administrator</i>	<i>Address</i>	<i>Telephone</i>
Gurabo	Srta. Saturnina Fontanez	Calle Santiago # 105	737-4831
Aguas Buenas	Sra. Nilka Goradin de Meléndez	Calle Juan J. Hernández 45	732-0080
Cidra	Sr. Ramón Reyes	Calle José Núñez Final Segundo Piso	739-7110

Medicare Program			
Cayey	Sra. Ana I. Figueroa	159 Calle Núñez Romeo Este	738-4976
Caguas	Sra. Naida Pérez	Edif. Plaza Gautier Benítez Local 4-B	746-2556
Juncos	Sra. Luz C. Rivera	Calle Dr. Barreras Esquina Daniel Flores	734-2002
Las Piedras	Sra. Iris Echevarria	Centro de Medicina Integrada Calle José C. Barbosa	733-1519
Maunabo	Sr. Víctor Rodríguez	Centro de Salud Ryder Ave. Kennedy detrás del Cuartel de la Policía	861-0154
Naguabo	Sr. Manuel Ríos Delgado	Centro de Medicina Integrada Carr. Militar No. 31	874-6540
Yabucoa	Sra. Clara Lebrón	Centro de Medicina Integrada Carr. Militar No. 3	893-4778 / 893-7100
San Lorenzo	Srta. Ramonita Santana	Calle Luis Muñoz Rivera # 5 Altos	736-5414
Humacao	Sra. Beverly Mercado	Calle Font Martelo Suite 180	850-4613
Arroyo	Sra. Aida Navarro Bristol	Centro de Salud Familiar Calle Morse Esq. Valentina Frente al Correo	839-2493
Patillas	Sr. Santos Martínez Martínez	Calle Alberto Ricci #21 Frente Ferreteria Hermanos de Pedro	271-1762
Aguada	Nydia Ramos	Edif. Coppelia 2do piso Bo. Piedras Blancas Ave. Nativo Alers	868-7759
Aguadilla	Ángel M. Arce	Antiguo Edif. de Conservación (frente edificio oficina regional)	891-4869 / 891-1595
Camuy	Maria de los A. Ortiz	Calle San José #5 (frente Terminal carros públicos)	820-3883
Isabela	Aida Gerena	Carr. #2 km. Bo. Mora (al lado de la ferreteria Acevedo)	872-5170
City	Administrator	Address	Telephone
CDT. Isabela	Srta. Yolanda Sosa Rivera	CIMA (antiguo CDT) Ave. Agustín R. Calero (antigua ave. Aguadilla)	872-2801
Moca	Iluminada Feliciano Méndez	Barbosa 218	877-2644
Quebradillas	Madeline Barreto Román	Calle California #10 (bajos)	895-0907
Rincón	Daisy Negron Negron	Hospital Nuevo Centro Salud Familiar Carr. 115 Km.12.0 Bo. Pueblo	823-4585

Medicare Program			
San Sebastián	Emilio López	Calle Severo Arana #36	896-4505
Unidad Certificadora Regional	Sra. Aidamari Cuevas Ramírez	Antiguo Hospital Distrito Carr. Arecibo a Lares 129 Primer Piso	880-0434
Arecibo	Carmen L. Rodríguez	Víctor Rojas II Carr. 129 Int.	878-8774
Hatillo	Luz S. Candelaria Rivera	Calle Fernando Velásquez Esq. Franklin D. Roosevelt	820-0272
Lares	Blanca E. Martínez Donet	Ave. Pedro Albizu Campos Km. 0.3	897-5800
Utua	Maria A. Loucil Cuevas	Ave. Fernando Luis Rivas (al lado de ASUME)	894-8867
Castañer	Sra. Sylvia Soto Ramírez	Carr. 135 Km. 64.2	829-2759
Las Marías	Arcángel Bonilla Crespo	Paseo Adrián Acevedo Sanabria Carr. 119 Km. 27.4	827-2544
Maricao	Nilda I. Ortiz Flores	Ave. Luchetti #9 (Frente Cuartel Policía)	838-2266
Añasco	Edwin González Torres	Carr. 402 Km. (Frente Zona Industrial) Barrio Marías	826-5650
Mayagüez	Lourdes Castro Segarra	Unidad Salud Pública de Mayagüez Calle Pilar Defillo #112	832-8605
Naranjito	Sra. Carmen M. Rodríguez	Bco. Popular piso 2 Calle Ignacio Morales #43	869-3005
Comerio	Sra. Nancy López Rivera	Centro Gubernamental Suite 2 #35 carr. 778 Bda. Pasarell	875-3470
Barranquitas	Sra. Sandra Rodríguez López	Centro Dorado 9 Calle Barceló Suite 105	857-4428
Corozal	Sra. Maria E. Ocasio Serrano	Bo. Pueblo	859-6703 / 859-0308
Orocovis	Sra. Exigencia Cruz Berrios	Edif. Oro Center Office Ave. Luis Muñoz Marín # 59	867-3606
Villaiba	Sra. Marilyn Rivera Ruiz	Calle Muñoz Rivera # 39 Frente tienda Me Salve	847-7107
Juana Díaz	Sr. Nelson Palomo Ramos	Calle Muñoz Rivera Esq. Dr. Veve	837-6607
Jayuya	Sra. Magda I. Soto Ongay	Centro de Salud Calle Cementerio # 2	828-1541
Coamo	Sra. Nayda Zayas Serrano	Centro de Salud Familiar Desvío Muñoz Marín Frente Res. El Edén	825-6367
Aibonito	Sra. Elena Rita González	Calle San José # 217	735-6720

Medicare Program		
Guayama	Sra. Silvia M. Orengo Ramos	Antiguo C.D.T. Calle Baldorioty Final Oeste 866-0673 / 866-0398
Salinas	Sra. Ana M. Reyes Rodríguez	Calle Luis Muñoz Rivera # 2 824-4997
Santa Isabel	Sr. Celestino Hernández	CDT Celis Aguilera C/Eugenio Maria de Hostos Salida para Coamo 845-8717 / 845-5050
Ponce		
Adjuntas	Srta. Jessica Cruz Ruiz / Interina	Centro de Salud Calle Dr. Defendini 3 829-1063
Peñuelas	Sra. Ercilia Rivera Rivera	Centro de Diagnostico y Tratamiento carr. Estatal 385 Km. 0.5 Bo. Cuevas (antes Guardia Nacional) 836-6007
Loíza	Sra. Ruth Lanzo	Concilio Salud Integral Carr. 188 Intersección 189 256-5040
Río Grande	Brunilda Salicrup	39 Calle Pimentel 504-2605 / 504-2642
Canovanas	Srta. Wilma Rivera Pizarro	Calle Corchado Frente Cuartel de la Policía 256-8094
Fajardo	Sra. Carmen M. Morales	Ave. General Valero #394 801-2055
Luquillo	Srta. Elisabel Solis	Edif. Luquillo Plaza 28 Calle Fernández García Local 22 889-3407

Medicare Program			
<i>City</i>	<i>Administrator</i>	<i>Address</i>	<i>Telephone</i>
Ceiba	Sra. Ángela Alvarado	258 Ave. Lauro Piñero 885-5500	885-5500
Carolina	Srta. Rosalía Cartagena	Calle Ignacio # 106 757-9535 / 752-1280	757-9535 / 752-1280
Trujillo Alto	Sr. Luis Flores	Centro Comercial Lago Alto Km. 4.5 Expreso T. Alto, Calle A Esq. Calle Loro Urb. Lago Alto 755-4150	755-4150
Bayamón	Sra. Marisol Crispín Reyes	Urb. Hermanas Dávila Calle 3 A 798-3320 / 269-5588	798-3320 / 269-5588
Bayamón Pueblo	Sra. Selva Torres Martínez	Segundo Piso Cantón Mall Calle Betances # 40 269-6030	269-6030
Hosp. Reg. Bay.	Sra. Sara Echevarria CEDEAO	Ave. Laurel Santa Juanita 787-5151 x. 2078 ó 2470	787-5151 x. 2078 ó 2470

Medicare Program		
Cataño	Srta. Wanda Canino López	Edif. Fuerte Ave. Principal Bay View Esq. West Ocean Drive # 10
Toa Baja	Sra. Nitzza I. Miranda Santos	Calle Luis Muñoz Rivera # 29
Guaynabo	Sra. Norman Ríos	Guaynabo Medical Mall 5to Piso
Amelia	Sra. Irma Hernández	

Appendix D: Demographic Registry Offices

<i>Demographic Registry</i>			
<i>City</i>	<i>Administrator</i>	<i>Address</i>	<i>Telephone</i>
Cabo Rojo	Nelly Segarra	Calle Muñoz Rivera # 106	851-2025 x. 238 851- 3880
Hormigueros	Irma Bonilla Horta	Cale Rama Esq. Albizu Campos # 18 altos	892-2270
Lajas	Bety Irizarry Nazario	Ave. Flamboyán #237	899-3440
San German	Rosario Irizarry Ortiz	Calle Rama esq. Albizu Campos # 18 Altos	892-2270
Guanica	Georgina Román Pagan	Centro de Salud Familiar Ramal 116	821-2650
Guayanilla	Fermína Oliveras Morales	Calle José de Diego # 13	835-2150
Yauco	Yolanda Orengo Caraballo	Hospital Bellavista del Sur Oeste carr. 128 desvío	856-1680
Barceloneta	Maria del C. González Cruz	Edif. Multiuso piso 2 anexo a la Alcaldía	846-3400 x.290
Ciales	Aracelis Soto Otero	Ciales Primary Health Cares Services carr. 129	871-2560
Florida	Zulma M. Santiago González	Centro de Salud calle Antonio Alcazar # 27	822-2506
Manatí	Doris M. Alayon Álvarez	#2 calle Ramos Vélez	854-2492
Morovis	Ramón B. Cortes Díaz	Centro de Salud Publica	862-3000 x.2223
Dorado	Ana Maldonado	Barrio Mameyal carr. 698	278-4954
Toa Alta	Iris N. Parrilla Soto	Ave. Sabana Seca final sector el 26, Bo. Ingenio	870-6296
Gurabo	Carmen S. Rodríguez Jiménez	Urb. El Maestro #3	737-4244
Aguas Buenas	Elizabeth González García	Centro de Salud Familiar calle Luis Muñoz Rivera Final	732-2240
Cidra	Rosa Meléndez Burgado	Hospital Menonita El Jibaro Km. 1	739-7610
Cayey	Olga de Jesús Rubet	Hospital de Área calle Luis Barrera # 5	738-2352
<i>Demographic Registry</i>			
<i>City</i>	<i>Administrator</i>	<i>Address</i>	<i>Telephone</i>
Caguas	Maria Álamo González	Calle Muñoz Rivera #65 esq. Celis Aguilera	743-2616
Juncos	Maria E. Loiz Delgado	Turabo Medical Group calle Muñoz Rivera Final	734-3370

Las Piedras	Sonia M. Torres Delgado	Calle Celso Barbosa	733-4433
Maunabo	Carmen E. Navarro Figueroa	Centro de Salud Publica	861-8025
Naguabo	Wilfredo García Toledo	Carr. # 31	874-0031
Yabucoa	Maria Lebrón Vargas	Calle Pedro M. Vázquez salida Camino Nuevo	893-7100x.106
San Lorenzo	Marian Vargas Lugo	Centro de Salud del Ryder calle Luis Muñoz Rivera Final	715-2190
Humacao	Inés Rodríguez Rodríguez	Hospital Regional Víctor Rincón Ave. Tejas	852-1704
Arroyo	Gladis Rodríguez Román	Calle Morse esquina Valentina	839-2104
Patillas	Ana H. Torres Rodríguez	Centro de Salud Familiar carr. # 3 al lado del Correo	839-2049 / 839-4320 839-4360
Vieques	Justina Quiñones Meléndez	Centro de Salud Bo. Destino	741-1827
Aguada	Maria Rosa Acevedo	Clínica San Francisco Calle Colón #106	868-3650
Aguadilla	Elizabeth López Oliver	Hospital Sub Regional Edificio Apolo	891-6688
Camuy	Monserrate Jiménez Ortiz	Ave. Muñoz Rivera #4	898-2290 x.261
Isabela	Elsa C. Santiago Soler	Ave. Agustín Ramos Calero Bo. Mora	872-4040
Moca	Nilda Pagan Martínez	Antigua USP calle Barbosa #237	877-5675
Quebradillas	Carmen Vélez González	Centro de Salud Familiar Muñoz Rivera	895-2596
Rincón	Frances M. Velásquez Cuesta	Calle Luis Muñoz Rivera	823-4645
San Sebastián	Mercedes Soto Pérez	Centro de Salud calle Pavia Fernández	896-1652
Arecibo	Miriam R. Ramos Cosme	Antiguo Hospital de Distrito carr. 829 Arecibo a Lares	878-2572 / 878-7665
Demographic Registry			
City	Administrator	Address	Telephone
Hatillo	Blanca I. García Feliciano	Centro de Salud calle Fernando Velásquez	898-3570
Lares	Evelyn Pérez Colon	CDT Incorporado Rafael A. González Carr. 11 Km. 1.9	897-2195
Utua	Manuel Rodríguez Rodríguez	Centro de Salud Isaac González	894-2445
Las Marias	Carmen I. Coriano Rodríguez	Bo. Maravilla Este	827-2220
Maricao	Virgen E. Pacheco Santana	#9 Ave. Luchetti	838-2590

Añasco	Carmen I. Méndez Correa	Centro de Salud Familiar Zona Industrial Bo. Maria	826-0777
Mayagüez	Aida L. Colon Ortiz	Unidad Salud Publica calle Pilar Defillo	832-1184 / 832-1600

Demographic Registry			
City	Administrator	Address	Telephone
Naranjito	Minerva Rivera Santos	Bo. Achiote Carr. 164	869-7810
Comerio	Luz E. Reyes Ríos	Centro de Salud calle Georgetti # 85	875-3010
Barranquitas	Aida Fuentes Alvarado	CEMPRI calle Barceló # 53	857-3855
Corozal	Carmen M. Colon Pérez	Calle San Ramón final	859-2183
Orocovis	Margarita Rodríguez Pagan	Ave. Luis Muñoz Marín	867-5288
Villalba	Eldra E. Colon Cruz	Urb. La Vega	847-9210
Juana Díaz	Iris R. Gutiérrez Mariano	Calle La Cruz # 6	837-3580
Jayuya	Edith M. Medina Torres	Calle Cementerio #2	828-3650
Coamo	Mariza Burgos Cruz	Centro Coameño de Medicina Avanzada Ave. Muñoz Rivera	825-3790
Aibonito	Ramonita Matos Ortiz	Calle San José detrás del cuartel de la Policía	735-1910
Guayama	Maria Elena Colon Rodriguez	Antiguo CDT Baldorioty Final Oeste	864-0202
Salinas	Wanda I. López Rodríguez	Surmed Medical Center	824-2500
Santa Isabel	Enid Colon Cruz	Centro de Salud Familiar Hostos Final	845-5050x.237
Ponce	Beatriz Pérez Castellar	Calle Mayor Cantera # 4	842-3127
Peñuelas	Iraida M. Rodriguez	Centro de Diagnostico y Tratamiento Bo. Cuevas Carr. 132 Km. 5	836-2050
Adjuntas	Elba Maldonado Miro	Centro de Salud Familiar Dr. Defendini # 4	829-0405
Loiza	Wanda Canales Dávila	Concilio Integral de Salud	876-8165
Río Grande	Idalia Torres Arena	Rio Grande Community Health Care	887-3429
Canóvanas	Luz S. Fernandez Montañez	Centro de Salud calle Corchado frente cuartel Valencia	876-2898
Fajardo	Rodolfo Robles Rodriguez	Ave. B Esq. E, Urb. Monte brisas	863-7360
Luquillo	Carmen Figueroa Normandia	Luquillo Health Community Center calle 4 de julio final	889-3377
Demographic Registry			
City	Administrator	Address	Telephone
Ceiba	Vivian Santiago Garcia	Calle José Romero #7	885-7265

Ceiba Sub	Nimía S. Torruellas	Base Naval Roosevelt Road	865-5968 / 865-5922
Carolina	Carmen L. Santana	Calle Bernardo García # 8 sur	768-6173
Trujillo Alto	Oswaldo Quiles Franco	Centro de Salud Exp. Km.4.7 Urb. Lago Esq. Carite	283-2245
Bayamón	Myrna Gómez Otero	Cantón Mall Ofic. 1 Segundo Piso	785-0439 / 288-5111 648-1883
Bayamón Sub	Alba Edda Maldonado Marrero	Ave. Laurel Lomas Verdes	787-5151 x.183 269- 0883
Guaynabo	Zenaida Rivera Llopiz	Guaynabo Medical Mall Ave. La Cumbres # 140	287-3500 x.2317
San Juan	Emnedies Dávila	Calle Quisqueya # 171	767-9120 X.2105 ó 2108 / 763- 9234
SJ Municipal	Josefa Centeno Villegas	Hospital Municipal Centro Medico	766-2222 x.4026 754- 0677
SJ Universitario	Eulalia Rivera Ortega	Hospital Universitario Centro Medico Río Piedras	754-0101 x.2114 ó 3658
Toa Baja	Iris N. Parrilla Soto	Ave. Sabana Seca final Sector el 26 Bo. Ingenio	870-6296
Cataño	Carmen S. Marque González	Calle Bernardo García # 8 Sur	788-4950

Appendix E: Women, Infant and Children

WIC			
City	Administrator	Address	Telephone
Cabo Rojo	Lcda. Nancy Santana	Calle Muñoz Rivera #57	851-8050
Hormigueros	Sra. Vilma Bonilla / Interina	Plaza Monserrate III Local I Carr. #2 Km. 164 Interior	849-4488
Lajas	Lcda. Maria Cancel	CFS Lajas-Clinica WIC Ave. Flamboyán #37 / Antiguo Centro de Salud	899-1044
Sabana Grande	Sr. Ottmar Santiago / Interino	Carr. 102 Km. 39-2 / Antiguo Centro de Salud	873-7335
San German	Lcda. Sofia Sepulveda	Calle Luna Esquina Castro Pérez Centro Comercial de San German	892-3415
Yauco	Lcda. Nydia Torres Sierra	Edificio A-R Carr. 127 Ext. 25 de Julio Km. 0.4 / Al lado de la Panadería Yamar y cerca de la Tumba El soldado Desconocido	856-6611
Guanica	Lcda. Maria de los A. Olan Batall	Calle Buena Ventura Quiñones #28 / Frente tienda Precios Locos	821-2997
Guayanilla	Lcda. Sandra Feliciano Rodríguez	Calle Rufina #18 / Cerca Floristería Bonnys	835-1884
Barceloneta	Lcda. Olga Colon Marín	Urb. Catalona # 79-A	846-0215
Ciales	Lcda. Maribel Rosario Pérez	Calle Palmer # 4	871-5713
Florida	Lcda. Maricelis Arlet Padilla	Centro de Salud San Judas de Florida Calle Antonio Alcazar # 27 Suite # 1	822-0316
Manatí	Lcda. Rosa Algarada	Calle Ramos Vélez Final # 2	884-7066
Morovis	Lcda. Juana Miranda	Morovis Community Health Center Ave. Corozal Esquina Patron	862-6134
Vega Baja	Lcda. Iris D. Vázquez Ortiz	Centro de Salud Familiar Urb. Villa Pinares, Calle Villa de Paseo # 81	858-2413
Vega Alta	Lcda. Nancy Ramírez	Carr. #2 / Frente Planta Eléctrica Detrás Centro de Salud Vega Alta	270-3183 / 270-2300
City	Administrator	Address	Telephone
Toa Alta	Lcda. Nayda Chévere Irizarry	Calle Muñoz Rivera 20 / Frente Plaza de Recreo	870-2370

WIC			
Dorado	Lcda. Madeline Santiago	CSF Dorado Carr. 698 Entrando hacia Bo. Mameyal Suite 4	278-2798
Gurabo	Lcda. Natividad Rivera	Gurabo Community Health Center San Antonio Final Salida Bo. Jaguas / Trailer Frente al Parque de Pelota	737-1240 / 737-1255
Aguas Buenas	Lcda. Eida Ortiz	Puerto Rico Medical Care 98 Muñoz Rivera / Frente a Caf. Rev. Quick, el estacionamiento de la clinica se encuentra detrás del edificio	732-0769
Cidra	Lcda. Helda Colon	Calle José De Diego Final #1 / Salida Río Abajo al lado del Garage Resaco. 2do nivel del Departamento de la Familia y A.M. Entrando por el Estacionamiento.	739-5445 / 739-0928
Cayey	Lcda. Carmen La Santa	Cayey PR Medical (trailer) Luis M. Barreros #5 / Trailer frente al Colegio La Merced	738-0845 / 738-0885
Caguas	Sra. Atilda Rodríguez	Edif. Shopping Plaza Gautier Calle Gautier Benítez, Esq. Georgetti Local 3 / Oficina Regional	746-2726 /6565/2215 743-2377
Caguas	Lcda. Amarilys Álvarez	San Juan Bautista Medical Center (Trailer) Carr. 172 Salida hacia Cidra / Frente a KF Chicken	743-4565 / 258-5757
Caguas I	Lcda. Carmen T. Guzmán	Edif. Plaza Gautier Calle Gautier Benítez, Esq. Georgetti Local #6 / 1er Piso Frent Oficina Regional	743-2334
Caguas II	Lcda. Nydia León	Plaza del Carmen Mall Carr. 172 Local B-6 2do Nivel	744-3460
City	Administrator	Address	Telephone
Juncos	Lcda. Maria I. Román	Plaza del Valenciano C-15 Ave. Las Flores / Cerca del Tribunal Superior de Justicia	734-5010 / 734-5025 734-5088 / 734-5055

WIC		
Las Piedras	Lcda. Juana Cortes	Centro de Medicina Integral José C. Barbosa #74 / Al lado Esc. Intermedia Fernando Roig. 733-0844
Maunabo	Lcda. Gladis Colon	CEMPRI Hospital Ryder Maunabo Ave. Kennedy / Detrás Cuartel Policía 861-1007
Naguabo	Lcda. Olga Aguiar	Centro de Salud Familiar Naguabo Carr. Militar #31 / Frente a la fabrica Dual Life 874-3322
Yabucoa	Lcda. Iris D. Laboy	Centro de Salud Familiar Carr. 901 / Cerca Centro Comercial Jardines de Yabucoa 893-7639
San Lorenzo	Lcda. Maria E. Claudio	Muñoz Rivera final / Frente al Centro Gubernamental 736-2400
Humacao	Lcda. Áurea Pérez	Hospital Regional Ave. Tejas, Segundo Nivel / Cerca del Supermercado del Este y KF Chicken 852-4460 / 852-8392
Arroyo	Eva De Jesús Arroyo / Interina	Calle Morse Esq. Valentina / Frente a la Plaza del Mercado 839-6225
Patillas	Aida Rivera Tirado / Interina	Calle Luis Muñoz Rivera (Norte) #24 / Frente Mauna Coop. 839-8020
Culebra	Sr. Wilfredo Pacheco / Interino	CDT Culebra Calle William Font (final) / Cerca del Edificio Envejeciente 742-0522
Vieques	Sra. Nora Camacho / Interina	Bo. Destino, Carr. 997 Km. 1.0 741-1964
Aguada	Lcda. Margarita Santiago	Estación #56 Edif. Laboratorio Aguadero 1er piso 868-8163

WIC			
City	Administrator	Address	Telephone
Aguadilla	Lcda. Zulma Lorenzo	Edif. Victoria II Calle Mercedes Moreno #6	882-31890
Camuy	Lcda. Myrna Santo Guillima	Calle San José #3 Camuy	898-1414
Isabela	Lcda. Miriam Matías	Centro Comercial Cooperativo Ave. Juan Hndz. Ortiz Num. 1 Altos	872-5200
Moca	Lcda. Lianabel Villanueva	507 Calle Concepción Vera S.	877-0090 / 877-7760
Quebradillas	Lcda. Aixa Cotto Moran	Calle Enrique Linares #207 Edificio Amador	895-1678

WIC			
Rincón	Lcda. Belquis Matías	Carr. 115 Km. 12.0	823-2040
San Sebastián	Lcda. Sylvia Lugo	Pepino Health Group 120 Calle Pavia Fernández	820-1255
Arecibo		Calle Jesús Cortes #101 y #105 Oficina Regional y Clínica	880-5758
Hatillo	Lcda. Aida L. Román Morales	Centro Medico de Hatillo Calle Fernando Velásquez Esq. Franklin D. Roosevelt	262-2018
Lares	Lcda. Milagros Vázquez Morales	Calle Albizu Campos #7	897-0003
Utua	Lcda. Evelia Báez Soto	Carr. 111 Ave. Fernando Rivas Dominichi Interior Bo. Vivi Abajo	894-5776
Castañer	Lcda. Julia Gandarilla	Carr. 135 Km. 64.2	829-2759
Ángeles	Sra. Sylvia Soto Ramírez	Carr. 602 Km. 1.2 Bo. Ángeles	829-2759
Las Marias	Sra. Lilliam González Interna	Barrio Maravilla Sur	827-3768
Maricao	Sr. Roberto Vázquez Interino	Calle Zuzuaregui #11	838-2080
Añasco	Sr. José L. Cruz Interino	Centro de Salud Carr. 402 La Variante Zona Industrial	826-5159
Mayagüez Programa WIC	Sr. Higinio Salazar	Avenida Hostos 410 Carr. 2 Edif. Casa de Salud-piso 3	834-4030 / 834-5574 831-4245
Mayagüez I	Lcda. Delia Pérez	Calle Martínez Nadal #59 Suite 106 Localizado en el Centro Comercial Park Plaza / Frente al Parque de los Proceres	832-0015
City	Administrator	Address	Telephone
Mayagüez	Sra. Griselle Carbonell Interina	Unidad de Salud Publica Mayagüez 112 Calle Pilar Defillo	265-6440
Naranjito	Lcda. Rosalía Rodríguez	Calle Georgetti 104 Piso 1	869-2724
Comerio	Lcda. Wanda López	Centro de Salud Familiar Calle Georgetti #18 / (Cempri) CFS Comerio al lado Tribunal Sup. Frente a Residencial Manuel Espino	875-5956 / 875-1830
Barranquitas	Lcda. Rosa M. Ortiz	Calle Barceló 10 Salida a Comerio / Frente al Hospital de Barranquitas	857-7857

WIC			
Corozal	Lcda. Gladis Acosta	Carr. 1891 Km. 147 Bo. Pueblo	859-3066 / 859-2722
Orocovis	Lcda. Angie Vélez Serrano	Ave. Muñoz Marín Edif. Oro Office Center / CEMPRI CFS Orocovis	867-5517
Villaiba	Lcda. Maribel Albertorio	Urb. La Vega, Calle C-2	847-2781
Juana Díaz	Lcda. Tamara Cintron Soto	Calle La Cruz / Al lado Esc. Superior Llorens Torres	260-1902
Jayuya	Aida Burgos Santos / Interina	Calle Cementerio #2 / Cerca Casa Alcaldía	828-2962
Coamo	Lcda. Carmen Negron	Centro Medicina Primaria Dr. Damaso Talavera Carr. 138 Ave. Muñoz Marín / Frente al Residencial El Edén	825-2544
Aibonito	Lcda. Rita O. Rivera	Centro de Salud Familiar Hospital Menonita San José Interior / Detrás Cuarte Policía	735-0190
Guayama	Martha Liaurador Zayas / Interina	Calle Baldorioty Final / Cerca Distribuidora González	864-4167
Salinas	Lcda. Evelyn Vázquez Vázquez	Centro de Salud Familiar Antonia García Calle Union Interior / Frente a la Escuela Superior de Salina	824-1661
Santa Isabel	Lcda. Isabel Rodríguez Barreras	Centro de Salud Familiar – Santa Isabel Calle Hostos Final Carr. 153 / Cerca de Restaurante Rincón Taino	845-4019
City	Administrator	Address	Telephone
Ponce Oficina Regional	Srta. Nilda Rivera	Hospital Episcopal San Lucas #2 Carr. 14, Bo. Cerrillo	841-4550 / 840-5961 840-5996 / 843-3605 840-2088
(USP) Ponce Unidad Salud Publica	Lcda. Nydia Alvarado	Carr. 14 Bo. Cerrillo Hosp. San Lucas #2 / Antiguo Hospital de Distrito	843-4715
Ponce I	Lcda. Elba Mercado García	Calle Méndez Vigo #65 / Frente Terminal Carros Públicos	842-2614

WIC			
Ponce III	Lcda. Arleen Colon Rodríguez	Carr. #10 de Ponce Cash and Carry	843-1675
Ponce IV	Lcda. Theresa Marciano Delgado	Ponce By Pass Esq. Pámpanos / Al lado Economuebles	841-7803
Peñuelas	Lcda. Sandra Segarra	Centro de Salud Familiar Carr. 385 Km. 0.05 Bo. Cuevas / Cerca del edificio de la Guardia Nacional de Peñuelas	836-3871
Adjuntas	Lcda. Jeanine Torres	Calle Muñoz Rivera #36	829-5898
Loíza	Lcda. Sandra Figueroa	Concilio de Loíza Carr. 188 Int. 187 / Entrando al pueblo	256-3330
Río Grande	Lcda. Milane Medina	Bo. Juan González, Carr. #3 Km. 27.0 Local 5, 6 y 7, Edificio Rivera	888-4422
Canóvanas	Lcda. Rosa Vázquez	Centro de Salud Calle Corchado	256-2160
Fajardo Ofic. regional	Sra. Yolanda Rivera	Calle Dr. Diego Zaldoundo #3 (Altos)	863-4000 / 860-1150
Fajardo I	Lcda. Damaris Sancoz	Calle Dr. Diego Zaldoundo #3 (Bajos)	863-4000 / 860-1150

WIC			
City	Administrator	Address	Telephone
Luquillo	Lcda. Calixta Rodríguez	Calle Fernández García # 28 Luquillo Plaza, Local # 18	889-0734
Ceiba	Lcda. Ana M. Molinari	Calle Romero # 772	885-0076
Carolina I	Lcda. Gisela Marichal	Carolina Shopping Court sexto piso Ave. 65 Infantería	757-3045
Carolina II	Lcda. Gisela Marichal	Carolina Shopping Court sexto piso Ave. 65 Infantería	768-3420 / 768-3580
Trujillo Alto CDT	Lcda. Jeannette Dalmao	Calle Flor Antillana Llorens Torres	760-3535 x. 237
Ofic. Regional	Sra. Candida Torres	El túnel Ave. 65 Inf. Km. 2.0 Esq. Calle 2 Urb. El Almeín	765-7578 / 751-7835 759-3626
Bayamón Dir. Regional	Sr. Héctor Rivera	Carr # 2 K. 11 H. 9 Piso # 2	798-5240 / 798-5335 798-5520
Bayamón Santa Juanita	Lcda. Ivonne Rodríguez	CDT Santa Juanita Ave. Santa Juanita B-1 Urb. Sunny Hills altos Dra. Glory Serrano	288-3553
Bayamón	Lcda. Luz López	Carr. # 2K K. 11 H. 9 Piso 1 Frente a Hermanos Meléndez, al lado de la Financiera Como Loco	798-5130
Bayamón Buena Vista	Lcda. Blanca R. Sastre	Carr. 167 Bo. Buena Vista / Al lado de Master Donuts	279-4694
Cataño	Lcda. Raquel Nacer Orsini	Centro de Salud Ave. Las Nereidas 126	275-0375
Hato Rey	Lcda. Milagros Rivera	CDT Dr. Koppisch-San José # 404 Ave. Barbosa	250-8419
City	Administrator	Address	Telephone
Toa Baja	Lcda. Vanesa García Alicea	Ave. Sabana Seca final / Frente a la Urbanización Mansión del Sol / Al lado del Centro de Gobierno de Toa Baja	261-3999 / 261-2470

WIC		
Guaynabo	Lcda. Marines Lozada	Calle Colton #11 Segundo Piso 790-4015
San Juan	Sr. Manuel Gómez	CDT Dr. Quevedo 359 Calle San Agustín Puerta de Tierra 723-6057 x.220
Santurce	Lcda. Martha Maux	CDT Dr. Belaval Ave. Borinquen Calle NIN Bo. Obrero 760-3535 x.234 982-5887
Santurce	Lcda. Jeannette Dalmao	CDT Dr. García Calle flor Antillana Llorens Torres 268-3992 x.232-233 228-2940
Santurce	Lcda. Teresa Echevarria	CDT Dr. Rabell-Hoare Calle Cerra Final 900 721-7089 x.205,215,22 9 721-0405
Río Piedras	Evelyn Guzmán / Enfermera	Clínica Puerto Nuevo Calle Andalucía 356 Esq. Calle Acapulco 781-1550 / 781-1736
Río Piedras	Lcda. Brunilda Valentín	CDT Dr. Javier Antón Calle Vallejo Esq. Piñero 763-4242 x 220,242

Appendix F: Costs Tables

See attached Excel File